

## *The Chicago Chess Player*

The Official Bulletin of the Chicago Industrial Chess League

*The Season's Awards Issue*

### **MOST IMPROVED PLAYER – John “Sweets” Suits**



## CICL Contact List

---

Bulletin Editor/Webmaster Bulletin@ChicagoChessLeague.org	<b>Tom Friske</b> 1035 E Algonquin Road Des Plaines, IL 60016	H:(847) 299-1033 W:{847} 914-8448
Ratings Chairman Ratings@ChicagoChessLeague.org	<b>Art Olsen</b> 714 E Algonquin Road #J102 Arlington Heights, IL 60006	H:(847) 437-9819 W:(847) 719-8036
	<b>FAX :</b> to SBS OTS, 22NW0644-5 at (847) 719-8151	
League President President@ChicagoChessLeague.org	<b>Tony Jasaitis</b>	C:(708) 903-6423 W:(312) 264-2044
League Secretary Secretary@ChicagoChessLeague.org	<b>Jerry Thomas</b> 745 Hageman Pl Naperville, IL 60563	H:(630)420-0188
League Treasurer Treasurer@ChicagoChessLeague.org	<b>Paul Freidel</b> 359 N. Worth Avenue Elgin, IL 60123	C:(224)436-6050
Trophy Chairman Trophy@ChicagoChessLeague.org	<b>Marty Franek</b> 9044 S 51 <sup>st</sup> Avenue Oak Lawn, IL 60453-1730	H: (708) 636-3714 C: (708) 846-8734
Publicity Chairman Publicity@ChicagoChessLeague.org	<b>Matt Vail</b>	C: (312) 933-1516 W: (630)505-6557
Banquet Chairman Banquet@ChicagoChessLeague.org	<b>Wayne Ellice</b>	H: (708) 636-1303

### DIVISIONAL CHAIRMEN

East Division ChairmanEast@ChicagoChessLeague.org	<b>Adam Muhs</b>	C: (847) 877-9629 W: (312) 497-1184
West Division ChairmanWest@ChicagoChessLeague.org	<b>Bob Buchner</b> 1316 Kallien Court Naperville, IL 60540	H: (630) 428-7707 W: (630) 979-7707
North Division ChairmanNorth@ChicagoChessLeague.org	<b>Jim Thomson</b>	W: (847) 538-5408

---

### Mark Your Calendars with These Key League Dates:

<b>Fall Business Meeting</b>	Last Wednesday of August (Aug 29 2007)
<b>Spring Business Meeting</b>	3.5 Weeks Before Playoffs (April 16, 2008)
<b>Season Playoffs</b>	Second Saturday of May (May 10, 2008)
<b>CICL Open</b>	Second Saturday of May (May 10, 2008)
<b>League Awards Banquet</b>	First Friday of June (June 6, 2008)

Officer Contact List	2
Contents of Issue	3
News	4
Chess Live Report about CICL v BAL	7
2007-2008 Season Awards	9

### **FINAL SEASON UPDATE**

Current Standings	11
Performance Ratings	12
Current Ratings	13
<b>TEAM ROSTERS</b> with Rating Changes	16

### **THE 2008 CICL PLAYOFFS**

Associating at Associates	23
---------------------------	----

### **ROUND TWO Report**

Hedgehogs vs St Charles CC	24
ALU Tyros vs St Charles CC Baker	36
Downers Grove CC vs Motorola Kings	50
Northwestern University vs UOP	61

*(ROUND THREE presented next month)*

#### ***On the cover...***

Our 2008 Most Improved Player – John Suits (last name not pronounced “Sweets”)

***With contributions from:*** Art Olsen, Norm Hughes, and Tam Nguyen

## **CICL SCORES FIRST in Internet Challenge**

It took days (not hours) of work to even pull it off, but the CICL vs Bankers' Athletic League (BAL) of New York was finally played. Even days before the Saturday, June 14<sup>th</sup> date, there was confusion as to what BAL players were actually committed, but thirteen CICL'ers were charging forward, looking for bodies. Even as the 2PM (EST) time arrived, it was obvious some of the Chicago players were going to be stiffed.

The time taken to re-arrange the pairings on the fly did, however, provide a little loose time for those waiting to hit the chat line part of the World Chess Live online site. It was fun following the various comments and conversations, even if some had their patience tested a bit. **Mike Granata** (Walgreen Skewers) came up with the unique solution of going to his sister's pool and re-connecting wireless while catching some rays. That's the spirit !

Three short hours later, it was over with the CICL showing a 7.5-4.5 overall victory ! But as that includes four forfeits from the BAL side (the CICL was all present and accounted for), of the games played BAL actually won 4.5-3.5 . That fact can even be represented differently, as **Jeff Wiewel** (St Charles CC) pointed out, we did not force the BAL players to shift up so that the forfeits were on the bottom. Doing that would surely have improved the pairings for the CICL side, but there was a strict rating boundary line between the two groupings. But of course, additionally, we were all in it for the fun, so who cares ?? Give us those pairings, and let's go !!

Several others with sign-ons to the website were able to watch from the sidelines, and all that gave their opinion were agreed – this was a overwhelming success and needs to be repeated as often as possible. Your favorite reporter suggested “every month”, but a frazzled organizer, **Norm Hughes** (Walgreens Forks) was nowhere ready to consider anything sooner than next year ! His far reach (and a connection on the New York side) had alerted the USCF webmaster and we expect an article (find elsewhere in this issue) to appear on their Chess Life Online site. Some of us can't help dreaming if all this will result in some online team competitions between far-flung clubs.

**BIG THANKS**, Norm, for the pathfinding !!

*(Match result and gamescores can be found on our website [www.chicagochessleague.org](http://www.chicagochessleague.org), a click away from the home page. Much analysis by BAL, Norm, and I are forthcoming in a future issue!)*

.....

## **AND NOW ON TO SOMETHING <almost> COMPLETELY THE SAME.....**

Well over 15 CICL'ers have volunteered to play against participants in the Warren Junior Chess Program. Another challenge match of sorts, this one will be against up-and-coming youngsters—so we will play a training role.

Our President is arranging this one and recently gave the following report:

We have had a very good response for the match vs the Warren Juniors, with a broad spectrum of ratings, 17 total interested people, more than we are likely to use.

Again, **the match will be Sat July 19 1pm at the Skokie Library.**

To avoid any bias and/or making tough decisions regarding who will play for us, and also because this is partly for the benefit of the Juniors, I will have Andi Rosen, who is arranging their end of things, choose the most appropriate opponents from a list consisting of only the ratings. If someone on our end withdraws after the selection is made, I will substitute the next closest rated player.

New CICL'ers are surely to be met here. Thanks to each for this out-reaching effort.

.....

## **FAMILIARITY BREEDS... MIRTH**

It might have been viewed as the “same old same ol’ thing”, but there was a great spirit of merriment at this season’s Awards Banquet June 6<sup>th</sup>. A smaller crowd than normal was present at the new site in Westchester – the Alpine Banquet, just off Wolf & Roosevelt Roads.

**Wayne Ellice** (Pawns), our Banquet Chairman, had spread a unique set of raffle gifts this year. Not just the expected chessbooks, but also a couple of chess sets were there for the taking. A great success to all !!



Quite a spread – the night’s trophies and raffle items.



Our own Gustavo Garzon (Fermilab) demonstrated one of his convincing wins, an interesting Queen’s Gambit Accepted game.



But of course, we had to play some !!

## **A TASTE OF CHICAGO ... CHESS**

Food and chess, what else could you want ?? Plan for a visit downtown to the annual Taste of Chicago and, while there, plan a little time to play chess. Our former member club, The Renaissance Knights, are sponsoring a booth !

**TASTE OF CHICAGO**  
**PLAY CHESS AT TASTE SPORTS**

**JUNE 27 - JULY 3RD**  
**11 AM - 6 PM**

SPONSORED BY,  
MAYOR'S DALEY'S OFFICE OF SPECIAL EVENTS &  
RENAISSANCE KNIGHTS CHESS FOUNDATION

---

## **YOU HAVEN'T FORGOTTEN THE PLAYOFFS YET ??**

I hope you enjoyed the analysis of the First Round from this year's playoffs ! Other years, it seemed like too much work and who reads all that, anyhow ? But this year was sooo different...

For this writer, the season was dry. Dry in inspiration, dry in desire, dry in results. "Fine" I thought, "I can at least revel in other's glories!" Then the old idea popped into mind—why not see all the playoff games in person and try to pass on the drama ? and get some pictures ? Surely a different article would come about; those fancy, multi-paged theme articles are hard to write, you know ?

So the decision was made and last month you saw the result—not only some onsite notes, but a new appreciation for the sportsmanship, joy, and realization that "at least we played". The results aren't the only point to chess.

"But isn't analysis of each game a bit much?" you ask. No, I don't think so! As I was entering the gamescores, I was amazed at how interesting they were ! It didn't seem to matter what team, or what place they were in, or what board was playing them.... they were real battles! These games deserve a better, deeper look !

My analysis skills have been lacking. But then I remembered I have friends, accurate analyzers of the silicon variety. Two years back, I'd stumbled into a superb deal on a dual-core-CPU laptop. So nice, in fact, its features and price are just now coming up to the standards of what I'd purchased. Programs, however, have to code specifically for the dual-core capabilities to be used, so what would I buy to try it out ? A chess-playing program, of course ! Deep Fritz was the first choice (ChessBase lover), but it was Deep Shredder 10 that seemed to crank out more than just tactical sequences; its positional sense (multiple moves of piece to improve it) is what really impressed.

So, thank you, all you skilled chessplayers, for providing some games that bear examination ! In running Deep Shredder, not only did it desk-check my ideas, but showed me how superficial some of my thoughts are. My love for the game returned, my desire to find better lines came back, I found myself digging again ?! Incredible !

**Round Two, then, is covered this month.** Expect the third and Open in coming months. Oh! There's also the BAL match ! So many games, so much to learn, so little time. <sigh>

<the following write-up was written by BAL organizer Carl Aridas, for publication on USCF's member website>

## The Windy City Blows Away The Big Apple In Battle of the Chess Leagues

Mid-summer sports competitions are not limited to baseball, and the teams are not always the Mets versus the Cubs. On June 14th, chess teams from Chicago and New York played each other in two separate matches (Open and & 1900) via the Internet. Representing Chicago were two All-Star teams of chess players from The Chicago Industrial Chess League (CICL) captained by CICL member Norm Hughes. The CICL - <http://www.chicagochessleague.org/> was founded when in the mid 1950's a few commercial chess clubs in Chicago began to hear about each other and arranged to hold large team matches and simultaneous exhibitions against Experts & Masters including (Chicago attorney) Sol Friedman, ("Champion of the Western Hemisphere") Sammy Reshevsky, and IM Al Horowitz (former U.S. Champ & founder of CHESS REVIEW). Miroslav "Mirko" Mejzr, a Czech immigrant, headed the strong chess club at the First National Bank, which was a leading bank of Chicago. The bank building stood where the Bank One Plaza and the Chagall Wall are now at Dearborn & Monroe. Mirko got the idea of forming a chess league similar to industrial bowling or softball leagues. He called around inviting other chess club leaders to come to the bank to discuss the proposition and a meeting was held on May 29, 1957 to establish the CICL. A co-founder of the CICL, Jim Brotsos, still plays with the CICL regularly and despite being about 250 points down from his peak rating of 1820 after playing in the Illinois Open of 1961, is still a formidable opponent. Jim is a Life Member of the USCF and co-founder (1961) and first President of the Illinois Chess Association. Last year, Jim was a member of J. Hanken's Chess Journalists of America.

Opposing the Chicago All Stars were two teams of All Stars from The Bankers Athletic Chess League of New York (BAL) <http://www.bankersathleticleague.org/chess/> which dates back to 1917. Described in an April 1964 New York Times article by American Grandmaster Al Horowitz as "catering to the more or less sophisticated player". The names of banks, and therefore the names of bank teams, have changed over the years. The 1965 BAL Chess League consisted of eight banks playing a five-board double round-robin. The first place team was Chemical Bank, followed by First National City Bank, Bank of America, Bankers Trust, Irving Trust, Morgan Guaranty, Chase Manhattan and The Bank of New York. As highlighted in a June 1967 New York Times article (in the sports section) by Al Horowitz, Bankers Trust won the tournament and went on to win eight BAL titles in a row, and twelve over the next twenty years. By the 2007-08 season, the league had grown to 24 teams playing in 3 divisions, and none of the Division-winning teams was a bank!

The two Open Teams played each other starting @ 2:00 PM EDT and the CICL side won handily 4 – 1, including two forfeits by the BAL side. The first key to winning a team event is to have your team show-up! The following game, featuring several rather complex combinations, was won by Tam Nguyen, rated 2229, on Board 2:

<see pgn at [www.chicagochessleague.org](http://www.chicagochessleague.org)>

The two Under 1900 Teams played at the same time and in this section, New York was able to get a drawn match in the 7-player event despite having only 5 players appear on-line. The New Yorkers used some great tactics as shown here by Bob Ali from the New York side on Board 4:

<see pgn at [www.chicagochessleague.org](http://www.chicagochessleague.org)>

Proving that both banking and chess can be family affairs, young Daniel Jurin, son of JPM Chase Captain Bruce Jurin, played the fine following game for the NY team:

<see pgn at [www.chicagochessleague.org](http://www.chicagochessleague.org)>

The lowest-rated player on either side was New York's Mark Alban on Board 7. Despite his lower than average rating, Mark is a veteran of the on-line chess wars and showed fine form in this win which allowed New York to claim a draw in the match:

1. d4 d5 2. c4 c6 3. Nc3 e6 4. Nf3 Bd6 5. g3 f5 6. c5 Bc7 7. Bg2 Nf6 8. O-O O-O 9. Bd2 Nbd7 10. a4 b6  
 11. b4 Bb7 12. Re1 Ne4 13. e3 a6 14. Qc2 bxc5 15. bxc5 a5 16. Rab1 Ba6 17. Bc1 Qf6 18. Ne2 Qh6 19. Nd2 Ndf6  
 20. f3 Qxe3+ 21. Kh1 Nf2+ 22. Kg1 Nd3+ 23. Kh1 Nxe1 24. Qd1 Qxe2 25. Qxe2 Bxe2 26. Rb7 Rfc8 27. Kg1 Nxe2  
 28. Kxg2 Bd1 29. Nf1 Bxa4 30. Ne3 Bb5 31. Nc2 a4 32. Kf2 e5 33. Ba3 e4 34. Ne3 exf3 35. Kxf3 Bd3 36. Kf2 Ne4+  
 37. Ke1 Ba5+ 38. Kd1 Nd2 39. Bb4 Bxb4 40. Rxb4 Nc4 41. Ng2 Rcb8 42. Rxb8+ Rxb8 43. Ke1 Rb2 44. Nf4 Be4  
 45. h4 a3 46. Ne2 a2 47. Nc3 a1=Q+ 48. Nd1 Qa5+ 49. Kf1 Qd2  
 0-1

[World Chess Live](#) (WCL) was a gracious host for this chess battle, which both sides promise will become an annual event. Management of the WCL provided each player with a free 30-day account before the Chess Championship so players could get used to playing on-line.

World Chess Live is currently offering all USCF members, a FREE six-month account with WCL at [www.worldchesslive.com/uscf](http://www.worldchesslive.com/uscf). Joining allows you to quickly find chess opponents around the country or around the world. As well as playing on WCL, you can also tune-in to a great selection of Chess.FM's popular weekly video shows featuring Joel Benjamin (Game of the Week), Larry Christiansen (Attack with LarryC), John Watson (Chess Talk) and Dan Heisman (Ask The Renaissance Man).

Want to find a chess league in your area outside Chicago or New York? Just click on Clubs & Tournaments from the CLO homepage; Then click on Chess Clubs and then Affiliate Directory Search on the top of the following screen. Find Affiliate Type screening options and click on "League" and then Submit to find a chess league near you!

Here is the match result sheet:

**1st CICL-BAL Internet Match**  
 -----June 14, 2008-----

Bankers' Athletic (BAL)				CICL			
1W	BALA1	2300	0F	1B	Jim Marshall	2236	1F
2B	Benjamin Katz	2087	0	2W	Tam Nguyen	2229	1
3W	Paulo Santana	1954	1	3B	Scott Allsbrook	2117	0
4B	Marc Widmaier	1889	0	4W	Jim Smallwood	2037	1
5W	BALA5	1879	0F	5B	Robert Hill	1987	1F
6B	BALB1	1870	0F	6W	Mike Granata	1884	1F
7W	Alan Staub	1833	1	7B	Earnest Dowell	1806	0
8B	Adam Juirn	1747	0	8W	Andrew McGuire	1751	1
9W	Robert Ali	1659	0.5	9B	Marty Franek	1728	0.5
10B	Michael Miciak	1574	1	10W	Rajan Nallathambi	1671	0
11W	Eric Godowski	1550	1	11B	Matt Vail	1603	0
12B	Mark Alban	1256	0F	12W	Adam Muhs	1625	1F
<b>TOTAL</b>				<b>4.5</b>			
				<b>7.5</b>			

NOTES:

- 1) There were conflicts with BAL as the NY open was also scheduled this weekend.
- 2) Time control was 90 minutes with a 2-sec increment for each move.
- 3) Final game (board 2) went the distance - approx. 3 hrs.
- 4) BAL forfeited boards named using their World Chess Live login id's.

## 2007-2008 LEAGUE CHAMPIONS

ST CHARLES BAKER CC



### Playoff Runners-up

St Charles CC      \*      Hedgehogs  
Downers Grove CC

### CICL Open Champions

Section 1 – Gustavo Garzon (Fermilab)  
Section 2 – Fred Furtner (AMA Tornado Snakes)

### CICL Open Runners-up

Section 1 – Andrew Wang (St Charles Baker CC)  
                 Rajan Nallathambi (UOP)  
Section 2 – Doug Campbell (UOP)  
                 Matt Vail (ALU Tyros)

### MOST IMPROVED PLAYER

JOHN SUITS (ST CHARLES CC)

### EAST DIVISION MVP

MICHAEL RAUCHMAN (HEDGEHOGS)

### NORTH DIVISION MVP

JANKESH PIPARIA (MOTOROLA KINGS)

### WEST DIVISION MVP

PAUL FREIDEL (ST CHARLES BAKER CC)



## DIVISION CHAMPIONS

EAST DIVISION  
2<sup>ND</sup> PLACE

HEDGEHOGS  
NORTHWESTERN UNIVERSITY CC

NORTH DIVISION  
2<sup>ND</sup> PLACE  
3<sup>RD</sup> PLACE

MOTOROLA KNIGHTS  
MOTOROLA KINGS  
UOP

WEST DIVISION  
2<sup>ND</sup> PLACE  
3<sup>RD</sup> PLACE  
4<sup>TH</sup> PLACE

ST CHARLES BAKER CC  
ST CHARLES CC  
DOWNERS GROVE CC  
ALU TYROS

## CENTURION AWARDS



### CENTURIONS (100+ GAMES PLAYED)

HENCE ALLEN (AMA ROGUE SQUADRON) 103  
JANKESH PIPARIA (MOTOROLA KINGS) 103  
ED SUAREZ (ARGONNE ROOKS) 100

### DOUBLE CENTURIONS (200+ GAMES PLAYED)

GEE LEONG (UOP) 205  
DAN EUSTACE (ALU DRAGONS) 200

**EAST DIVISION 04-17-2008**

TEAM NAME				GAME	MATCH	PCT	PR	USAT
	W	L	D	POINTS	POINTS			
HEDGEHOGS	7	1	0	38.0	7.0	0.875	1874	110.5
NORTHWESTERN CHESS CLUB	7	1	0	33.5	7.0	0.875	1859	93.0
AMA ROGUE SQUADRON	3	5	0	19.0	3.0	0.375	1554	49.5
CITADEL GROUP	2	6	0	19.0	2.0	0.250	1485	56.0
AMA TORNADO SNAKES	1	7	0	10.5	1.0	0.125	1395	42.0

**NORTH DIVISION 04-17-2008**

TEAM NAME				GAME	MATCH	PCT	PR	USAT
	W	L	D	POINTS	POINTS			
MOTOROLA KNIGHTS	7	1	1	40.0	7.5	0.833	1881	157.5
MOTOROLA KINGS	6	1	2	35.0	7.0	0.778	1893	150.5
UOP	3	3	3	29.0	4.5	0.500	1755	141.5
WALGREEN FORKS	3	4	2	22.0	4.0	0.444	1627	83.8
WALGREEN SKEWERS	3	5	1	19.5	3.5	0.389	1656	90.0
NORTHROP	2	5	2	19.0	3.0	0.333	1610	74.8
EXCALIBURS	1	6	2	20.5	2.0	0.222	1599	84.3

**WEST DIVISION 04-17-2008**

TEAM NAME				GAME	MATCH	PCT	PR	USAT
	W	L	D	POINTS	POINTS			
ST CHARLES BAKER	7	1	1	37.0	7.5	0.833	1862	131.5
DOWNERS GR CHESS CLUB	6	1	2	35.5	7.0	0.778	1826	127.8
ST CHARLES CHESS CLUB	7	2	0	35.0	7.0	0.778	1847	141.8
LUCENT TECH. TYROS	6	3	0	35.0	6.0	0.667	1803	132.3
FERMILAB	5	3	1	29.5	5.5	0.611	1719	102.8
LUCENT TECH. DRAGONS	4	3	2	29.0	5.0	0.556	1712	113.8
ARGONNE ROOKS	3	5	1	21.5	3.5	0.389	1632	60.0
PAWNS	2	6	1	22.0	2.5	0.278	1538	68.3
MOLEX	1	8	0	15.0	1.0	0.111	1463	52.0
BP CHICAGOLAND	0	9	0	8.0	0.0	0.000	1245	36.5

**CICL Performance Ratings  
04/18/2008**

<b>Team</b>	<b>Division</b>	<b>Games Ave</b>	<b>Board PR</b>	<b>Match PR</b>	<b>PR (B+M) / 2</b>	<b>Adjusted PR</b>
HEDGEHOGS	East	4.8	1882.8	1864.2	1873.5	2037.5
NORTHWESTERN CHESS CLUB	East	4.8	1840.3	1877.8	1859.1	2023.1
MOTOROLA KINGS	North	7.7	1899.5	1886.5	1893.0	2002.0
MOTOROLA KNIGHTS	North	7.5	1877.8	1883.2	1880.5	1989.5
ST CHARLES BAKER	West	6.5	1824.9	1899.3	1862.1	1989.1
ST CHARLES CHESS CLUB	West	7.5	1825.0	1869.1	1847.1	1974.1
DOWNERS GR CHESS CLUB	West	7.5	1804.8	1847.3	1826.1	1953.1
LUCENT TECH. TYROS	West	7.2	1818.0	1788.0	1803.0	1930.0
UOP	North	7.7	1743.5	1767.0	1755.3	1864.3
FERMILAB	West	7.2	1697.2	1739.9	1718.6	1845.6
LUCENT TECH. DRAGONS	West	8.3	1709.2	1715.0	1712.1	1839.1
WALGREEN SKEWERS	North	6.2	1616.6	1694.9	1655.8	1764.8
ARGONNE ROOKS	West	7.3	1613.8	1651.0	1632.4	1759.4
WALGREEN FORKS	North	7.0	1574.3	1679.3	1626.8	1735.8
NORTHROP	North	6.8	1577.5	1643.0	1610.3	1719.3
AMA ROGUE SQUADRON	East	5.2	1521.5	1586.9	1554.2	1718.2
EXCALIBURS	North	7.0	1607.8	1590.6	1599.2	1708.2
PAWNS	West	7.2	1529.1	1546.7	1537.9	1664.9
CITADEL GROUP	East	5.3	1508.2	1462.6	1485.4	1649.4
MOLEX	West	7.0	1464.1	1461.8	1463.0	1590.0
AMA TORNADO SNAKES	East	3.5	1292.0	1498.1	1395.1	1559.1
BP CHICAGOLAND	West	5.0	1255.6	1234.7	1245.2	1372.2

**FINAL SEASON RATINGS (after Playoffs)**
**13**

NAME	TEAM	W	L	D	RATING	NAME	TEAM	W	L	D	RATING
ACEVEDO, U	LOYLA	0	1	0	0000/1	DJORDJEVIC, V	STCCC	3	1	0	1625
ADAMS, W	LOYLA	1	1	0	0000/2	DOBROVOLNY, C	TYROS	7	5	0	1757D
ALBERTS, W	BAKER	5	5	2	1562	DORSKY, A	NWEST	0	1	0	0000/0
ALEXANDER, J	LOYLA	1	0	0	0000/0	DOSIBHATLA, D	FORKS	5	2	2	1607*
ALFONSO, E	MKNGT	0	1	0	1467	DOWELL, E	EXCLB	5	2	1	1806
ALLEN, H	AMARS	2	7	0	1780	DRENDEL, B	FERMI	1	3	1	1010#
ALLSBROOK, F	TYROS	4	4	5	2117	DUONG, R	MKNGT	4	2	0	1539*
ALOP, J	DGCC	0	1	0	0000/1	DYCKZKOWSKI, R	PAWNS	0	1	2	1375
ANNIS, J	FERMI	2	2	2	1450*	EAMAN, R	AMARS	5	3	0	1844
ANSARI, N	SKEWR	3	4	1	1572	EASTON, R	UOP	5	5	1	1815C
AREVEDO, U	LOYLA	0	1	0	0000/1	EGERTON, J	DGCC	3	1	2	2023
AUBRY, B	NORTH	2	5	1	1593*	ELLICE, W	PAWNS	2	4	3	1812C
AUGSBURGER, L	MKNGT	0	0	1	1807C	ELLIOTT, T	NORTH	0	1	0	1330
BABINEC, J	MKNGT	3	1	0	1383*	ENGELN, M	NORTH	4	6	1	1670
BAKSHI, A	NWEST	1	3	4	2008	EUSTACE, D	DRGNS	6	3	0	1509C
BALES, R	BAKER	2	1	0	1401	FABIJONAS, R	PAWNS	0	8	1	1485T
BALICKI, J	MKNGT	3	1	1	1871C	FARMER, B	AMATS	0	2	0	0000/2
BAURAC, D	ROOKS	2	2	3	1799T	FAZEKAS, J	PAWNS	0	1	0	1625
BENEDEK, R	ROOKS	2	1	0	2133T	FRANEK, M	PAWNS	3	1	8	1728D
BERBARI, N	DGCC	1	1	0	1500/2	FRANK, M	AMARS	3	4	1	1720C
BERNSTEIN, B	HEDGE	0	1	0	1261	FRANKLIN, D	HEDGE	3	0	4	2206
BERNSTEIN, J	ROOKS	0	3	0	0000/2	FREIDEL, JER	BAKER	3	0	0	1829
BIALON, D	SKEWR	2	3	2	1767*	FREIDEL, JESSE	BAKER	5	1	5	2000
BIRO, R	DGCC	0	0	0	1375	FREIDEL, P	BAKER	9	2	1	1971
BLAZEK, G	NWEST	1	0	0	1566	FRIDMAN, Y	MKNGT	6	1	1	2213C
BOLDINGH, E	UOP	4	4	0	1886C	FRISKE, T	FORKS	1	6	2	1976C
BREYER, A	DRGNS	0	3	1	1271	FURTNER, F	AMATS	3	9	0	1452
BROCK, B	AMARS	4	2	2	2054	GAINES, I	FERMI	3	4	2	1729T
BRONFELD, A	EXCLB	0	3	0	1790	GAPNI, P	NWEST	3	1	0	0000/2
BROTOS, J	EXCLB	1	4	0	1534T	GARZON, G	FERMI	8	2	1	2282
BUCHNER, R	TYROS	3	2	0	1668C	GIBSON, B	STCCC	0	1	0	1301
BYRNE, M	TYROS	4	0	1	1390	GOLOSSANOV, A	FERMI	1	3	0	1089#
CAMPBELL, DOUG	UOP	2	2	1	1446*	GONCHAROFF, N	MKING	2	6	5	1569V
CAMPBELL, G	DGCC	0	0	0	1000/0	GONZALES, T	DGCC	3	2	0	1594
CAPUTO, W	DGCC	0	1	0	1481	GOODFRIEND, B	AMARS	2	0	0	1301
CEASE, H	FERMI	1	0	0	1479	GORODETSKIY, S	NWEST	4	3	2	1992
CHAVEZ, A	HEDGE	2	3	3	1293#	GRANATA, M	SKEWR	4	3	1	1884*
CHERKASSKY, G	MKNGT	6	1	2	1658*	GREER, J	BAKER	1	2	0	1378
CHRISTIAN, T	PAWNS	0	0	1	0000/2	GRUDZINSKI, J	ROOKS	1	0	1	1453
CHUN, A	NWEST	0	0	1	800/1	GRUDZINSKI, T	AMARS	0	1	0	1300/1
COULTER, D	BPCHI	1	3	2	1904	GRYPARIS, J	MKING	1	2	0	1391C
CURRAN, T	DGCC	4	3	1	1661	GUIO, J	TYROS	2	5	0	1805C
CYGAN, J	MKING	7	3	0	1824	HAHNE, D	TYROS	5	3	3	1611C
DECMAN, S	ROOKS	0	1	0	1560D	HAMELINK, N	FORKS	2	7	2	1719*
DEGRAF, B	FERMI	1	2	4	1497	HARPER, M	AMATS	3	5	0	0000/2
DEICHMANN, E	MOLEX	3	5	2	1287	HART, V	NORTH	6	1	2	2025
DENEEN, D	BPCHI	0	3	0	1441	HAYES, D	BPCHI	0	1	0	1346#
DENMARK, T	TYROS	0	0	1	1664	HAYHURST, W	CITGR	1	3	2	1916
DERIY, B	ROOKS	3	1	0	1533*	HENDRICKSON, B	MOLEX	2	6	1	1532
DIAZ, P	TYROS	6	3	3	2067D	HERNANDEZ, F	BPCHI	2	4	0	955*

05-11-2008

NAME	TEAM	W	L	D	RATING	NAME	TEAM	W	L	D	RATING
HERR, T	BPCHI	0	2	0	0000/1	MILLER, A	AMARS	0	0	1	1428
HILL, R	ROOKS	1	4	2	1987D	MORAN, B	HEDGE	1	0	0	1526
HLOHOWSKY, J, I	ROOKS	3	3	0	1032*	MORRIS, R	MKNGT	5	0	1	2242C
HORTON, D	MKING	2	1	0	1916	MOSSBRIDGE, A	UOP	1	1	1	1652
HUGHES, N	FORKS	2	4	2	1611C	MUELLER, R	MOLEX	1	2	1	1063*
IRBY, L	AMARS	1	5	0	0000/7	MUHS, A	CITGR	3	4	2	1625
JANSSEN, G	BAKER	3	3	5	1537	NALLATHAMBI, R	UOP	7	1	1	1671
JASAITIS, A	HEDGE	7	0	2	2000D	NGUYEN, T	BAKER	6	1	2	2229
JAWORSKA, O	NWEST	0	1	0	1269	NICK, X	FORKS	1	4	0	0000/4
JOSHI, B	MKING	1	2	0	1556*	O'DELL, DW	PAWNS	4	2	0	1364D
KACZYNSKI, W	SKEWR	1	6	0	0000/5	OLSEN, A	UOP	2	1	2	1475C
KALAVAGUNTA, S	DGCC	3	2	4	2030	ONG, K	CITGR	2	3	1	1776
KANNAPPAN, V	SKEWR	1	2	0	0000/2	PARRA, J	CITGR	3	1	0	1200/3
KARANDIKAR, S	MKNGT	4	2	1	1714	PATELLA, C	AMATS	0	1	0	0000/2
KARPIERZ, J	TYROS	0	1	0	1297	PEHAS, A	DRGNS	1	0	1	1852C
KLUG, S	DGCC	3	1	5	2177	PERSONS, J	FORKS	3	4	0	1403#
KOMORAVOLU, K	DRGNS	4	0	2	1396	PETERSON, T	AMATS	1	5	1	1526
KRAS, T	PAWNS	2	0	2	2162C	PIPARIA, J	MKING	8	2	2	1986
KRATKA, M	HEDGE	4	1	1	1616	PIWOWAR, T	AMARS	0	1	0	1050/3
KRAVIK, S	NWEST	2	0	0	1428	PLOTHER, J	LOYLA	0	1	0	0000/0
KUCINAS, E	DGCC	0	0	0	1300/0	PLOTNER, J	LOYLA	0	1	0	0000/1
KUHLMANN, S	ROOKS	1	2	0	1385*	POTTS, K	DGCC	6	2	0	1838
KUNHIRAMAN, P	CITGR	2	0	0	1593#	POWERS, E	STCCC	1	4	1	1441
LATIMER, E	PAWNS	0	2	1	1973T	PROKOPOWICZ, P	CITGR	1	3	1	1177#
LE, DUC	CITGR	3	5	1	1664	RABINOVICH, E	MKING	5	2	2	1538
LECHNICK, J	UOP	8	2	2	1761C	RAMANATHAN, N	ROOKS	2	5	0	1307#
LEE, D	EXCLB	1	6	1	1875	RAMIREZ, A	UOP	0	2	0	0000/3
LEONG, G	UOP	2	4	4	1922C	RASO, P	BAKER	5	0	1	2138
LEVENSON, S	SKEWR	4	3	0	2044	RAUCHMAN, M	HEDGE	4	1	2	2060
LI, JEFF	NWEST	1	0	0	1600/0	REICH, T	MOLEX	0	8	1	1773
LU, D	NWEST	3	1	0	1387*	REID, C	EXCLB	3	4	1	1455D
LUDWIG, T	DRGNS	2	2	3	1993C	RINGENBERG, T	BPCHI	0	4	0	1434
MAMMA, M	BPCHI	0	1	0	0000/1	RODNYANSKY, S	NWEST	1	0	0	1704
MANEY, A	DGCC	3	1	3	1702	RUFUS, B	MOLEX	1	4	0	1309
MANILA, M	BPCHI	1	6	0	1105	SAJBEL, P	UOP	0	1	0	1764C
MARCOWKA, R	DRGNS	2	2	3	1919T	SANTIAGO, T	FORKS	5	4	0	1923C
MARSHALL, J	STCCC	5	2	3	2236	SCHILLER, A	DGCC	0	1	0	1352
MARTELL, J	NWEST	0	1	0	600/0	SCHULZ, N	DGCC	0	0	0	1508
MASITI, J	AMATS	2	3	0	1345*	SCHUPAK, M	AMATS	0	2	1	0000/1
MCGEE, M	STCCC	1	1	1	1438	SEDA, JOE	HEDGE	2	0	0	0000/0
MCGOWAN, D	MOLEX	4	4	0	1468	SEDOV, A	FERMI	3	1	2	1780*
MCGUIRE, A	SKEWR	1	4	0	1751#	SEET, P	HEDGE	6	1	0	1872
MEISSEN, B	STCCC	1	1	1	1766	SENSAT, J	CITGR	2	3	2	1509
MELNIKOV, I	MKING	3	2	5	2029C	SHENG, A	LOYLA	0	1	0	0000/0
MEYER, C	AMATS	3	2	1	1240#	SHEPARDSON, T	HEDGE	2	0	1	1553
MEYER-ABBOTT, B	AMATS	0	7	0	1317*	SIEGEL, R	NORTH	3	3	0	1464C
MICHALOPOULOS, G	CITGR	1	1	2	1314	SIWEK, M	UOP	2	3	6	1949D
MICKLICH, F	UOP	3	5	1	1489D	SMALLWOOD, J	NWEST	10	1	1	2037
MIKOS, D	LOYLA	0	2	0	0000/2	SMITH, BR	DGCC	3	0	1	1610C
MIKULECKY, B	PAWNS	3	2	1	1404D	SMITH, D	STCCC	5	2	2	1541

05-11-2008

NAME	TEAM	W	L	D	RATING	NAME	TEAM	W	L	D	RATING
SMITH, JEFF	ROOKS	0	2	0	0000/2	ULLOM, G	NWEST	3	5	3	1726
SMITH, M	HEDGE	7	2	2	1960	VAIL, M	TYROS	7	1	1	1603
SOBSKI, A	NORTH	0	1	0	0000/5	VALENTINE, T	DGCC	0	0	0	1232
SOLOMON, A	NWEST	3	1	2	1847*	VAN MEER, J	UOP	0	4	1	1858
SPIEGEL, L	FERMI	4	3	2	1943T	VECANSKI, D	DGCC	4	2	1	1608
SPITZIG, M	PAWNS	0	5	3	1354	VIGANTS, A	NORTH	2	6	2	1538C
SPLINTER, J	STCCC	5	1	3	2056	VOIGHT, T	BAKER	1	1	1	1249
STACKO, J	LOYLA	0	1	1	0000/2	VON HATTEN, J	STCCC	4	2	1	1650
STAMM, V	DRGNS	2	2	1	1506T	WAKERLY, R	DGCC	7	3	1	1793
STAPLES, C	FERMI	2	0	0	1621	WALKER, A	NORTH	0	4	0	1834
STILES, V	DGCC	0	0	0	1000/0	WALLACH, C	MKING	7	2	3	2003C
STOLTZ, B	TYROS	2	2	1	1904D	WANG, ANDREW	BAKER	4	2	1	1821
STOSKUS, A	STCCC	3	1	3	1491	WANG, B	NWEST	10	1	0	1803
SUAREZ, E	ROOKS	1	2	2	1861	WEITZ, R	EXCLB	2	3	1	1592D
SUERTH, F	EXCLB	2	1	1	1538D	WEZEMAN, H	DGCC	0	0	0	1400/0
SUITS, J	STCCC	7	3	1	1753	WIEWEL, J	STCCC	7	2	1	2056
SUVARNAKANTI, R	BPCHI	2	3	2	1270*	YACOUT, A	ROOKS	1	0	1	1598
TAN, A	HEDGE	4	2	1	1642*	YALAVARTHI, R	DGCC	1	2	0	1668
TEGEL, F	DRGNS	3	1	5	2063Q	ZADEREJ, V	MOLEX	1	8	0	1621
THOMAS, J	DRGNS	3	4	0	1481D	ZOELLNER, J	EXCLB	2	1	0	1336D
THOMSON, J	MKNGT	6	2	1	2017C	ZUBIK, J	BPCHI	0	3	0	1186*
TULLIS, B	DGCC	0	0	0	744						

/x - UNRATED; x = # OF RATED GAMES

# - 5 TO 9 RATED GAMES

\* - 10 TO 24 RATED GAMES

C - CENTURY CLUB MEMBER

D - DOUBLE CENTURION

T - TRIPLE CENTURION

Q - QUAD CENTURION

V - QUINTUPLE CENTURION

05-11-2008

**AMA ROGUE SQUADRON**

NAME	RATING	SEASON RATING			TOTAL GAMES	RATED GAMES
		W	L	D CHANGE		
GRUDZINSKI, T	1300?	0	1	0	2	1
PIWOWAR, T	1050?	0	1	0	8	3
BROCK, B	2054	3	2	2	-7	17
EAMAN, R	1844	5	3	0	-13	80
ALLEN, H	1780	2	7	0	-145	100
FRANK, M	1720C	3	4	1	-13	133
MILLER, A	1428	0	0	1	15	41
GOODFRIEND, B	1301	2	0	0	27	12
IRBY, L	0000?	1	5	0	0	10

**CITADEL GROUP**

NAME	RATING	SEASON RATING			TOTAL GAMES	RATED GAMES
		W	L	D CHANGE		
PARRA, J	1200?	3	1	0	0	10
HAYHURST, W	1916	1	3	2	-19	58
ONG, K	1776	2	3	1	-49	25
LE, DUC	1664	3	5	1	-28	41
MUHS, A	1625	3	4	2	68	34
KUNHIRAMAN, P	1593#	2	0	0	0	14
SENSAT, J	1509	2	3	2	-67	51
MICHALOPOULOS, G	1314	1	1	2	-13	7
PROKOPOWICZ, P	1177#	1	3	1	0	10

**NORTHWESTERN CHESS CLUB**

NAME	RATING	SEASON RATING			TOTAL GAMES	RATED GAMES
		W	L	D CHANGE		
LI, JEFF	1600?	1	0	0	0	1
CHUN, A	0800?	0	0	1	0	3
MARTELL, J	0600?	0	1	0	0	3
SMALLWOOD, J	2037	10	1	1	79	29
BAKSHI, A	2008	1	3	4	-75	14
GORODETSKIY, S	1992	4	3	2	-47	33
SOLOMON, A	1847*	3	1	2	-29	11
WANG, B	1803	10	1	0	48	12
ULLOM, G	1726	3	5	3	-81	11
RODNYANSKY, S	1704	1	0	0	21	13
BLAZEK, G	1566	1	0	0	0	1
KRAVIK, S	1428	2	0	0	14	11
LU, D	1387*	3	1	0	9	17
JAWORSKA, O	1269	0	1	0	0	1
DORSKY, A	0000?	0	1	0	0	1
GAPNI, P	0000?	3	1	0	0	4

**HEDGEHOGS**

NAME	RATING	SEASON			RATING CHANGE	TOTAL GAMES	RATED GAMES
		W	L	D			
FRANKLIN, D	2206	3	0	4	42	16	16
RAUCHMAN, M	2060	4	1	2	23	45	44
JASAITIS, A	2000D	7	0	2	23	277	252
SMITH, M	1960	7	2	2	16	30	30
SEET, P	1872	6	1	0	67	48	43
TAN, A	1642*	4	2	1	-30	32	23
KRATKA, M	1616	4	1	1	13	61	55
SHEPARDSON, T	1553	2	0	1	-14	8	4
MORAN, B	1526	1	0	0	14	6	3
CHAVEZ, A	1293#	2	3	3	0	8	5
BERNSTEIN, B	1261	0	1	0	-14	1	1
SEDA, JOE	0000?	2	0	0	0	2	0

**AMA TORNADO SNAKES**

NAME	RATING	SEASON			RATING CHANGE	TOTAL GAMES	RATED GAMES
		W	L	D			
PETERSON, T	1526	1	5	1	43	26	24
FURTNER, F	1452	3	9	0	30	31	27
MASITI, J	1345*	2	3	0	5	14	11
MEYER-ABBOTT, B	1317*	0	7	0	-17	11	10
MEYER, C	1240#	3	2	1	0	14	7
HARPER, M	0000?	3	5	0	0	8	2
SCHUPAK, M	0000?	0	2	1	0	3	1
PATELLA, C	0000?	0	1	0	0	2	2
FARMER, B	0000?	0	2	0	0	2	2

**UOP**

NAME	RATING	SEASON			RATING CHANGE	TOTAL GAMES	RATED GAMES
		W	L	D			
SIWEK, M	1949D	2	3	6	7	228	220
LEONG, G	1922C	2	4	4	-3	205	187
BOLDINGH, E	1886C	4	4	0	4	191	184
VAN MEER, J	1858	0	4	1	-100	63	60
EASTON, R	1815C	5	5	1	-45	112	99
SAJBEL, P	1764C	0	1	0	-25	158	141
LECHNICK, J	1761C	8	2	2	19	132	112
NALLATHAMBI, R	1671	7	1	1	71	41	30
MOSSBRIDGE, A	1652	1	1	1	-26	30	29
MICKLICH, F	1489D	3	5	1	-48	287	241
OLSEN, A	1475C	2	1	2	8	175	155
CAMPBELL, DOUG	1446*	2	2	1	-1	10	9
RAMIREZ, A	0000?	0	2	0	0	3	3

**NORTHROP**

NAME	RATING	SEASON			RATING CHANGE	TOTAL GAMES	RATED GAMES
		W	L	D			
HART, V	2025	6	1	2	77	18	18
WALKER, A	1834	0	4	0	-72	99	92
ENGELN, M	1670	4	6	1	56	34	30
AUBRY, B	1593*	2	5	1	-13	23	20
VIGANTS, A	1538C	2	6	2	-67	165	149
SIEGEL, R	1464C	3	3	0	-26	138	109
ELLIOTT, T	1330	0	1	0	-25	8	8
SOBSKI, A	0000?	0	1	0	0	8	5

**EXCALIBURS**

NAME	RATING	SEASON			RATING CHANGE	TOTAL GAMES	RATED GAMES
		W	L	D			
LEE, D	1875	1	6	1	-61	26	24
DOWELL, E	1806	5	2	1	59	30	28
BRONFELD, A	1790	0	3	0	-40	74	67
WEITZ, R	1592D	2	3	1	4	228	208
SUERTH, F	1538D	2	1	1	40	239	199
BROTSOS, J	1534T	1	4	0	-19	323	260
REID, C	1455D	3	4	1	26	253	209
ZOELLNER, J	1336D	2	1	0	2	252	182

**MOTOROLA KINGS**

NAME	RATING	SEASON			RATING CHANGE	TOTAL GAMES	RATED GAMES
		W	L	D			
MELNIKOV, I	2029C	3	2	5	23	139	137
WALLACH, C	2003C	7	2	3	43	163	160
PIPARIA, J	1986	8	2	2	93	103	99
HORTON, D	1916	2	1	0	-4	22	20
CYGAN, J	1824	7	3	0	83	66	61
GONCHAROFF, N	1569Q	2	6	5	-44	571	485
JOSHI, B	1556*	1	2	0	-29	26	22
RABINOVICH, E	1538	5	2	2	37	55	40
GRYPARIS, J	1391C	1	2	0	0	169	126

**MOTOROLA KNIGHTS**

NAME	RATING	SEASON RATING			TOTAL GAMES	RATED GAMES
		W	L	D CHANGE		
MORRIS, R	2242C	5	0	1 9	112	105
FRIDMAN, Y	2213C	6	1	1 10	110	106
THOMSON, J	2017C	6	2	1 6	136	113
BALICKI, J	1871C	3	1	1 -6	134	112
AUGSBURGER, L	1807C	0	0	1 -2	181	152
KARANDIKAR, S	1714	4	2	1 38	70	55
CHERKASSKY, G	1658*	6	1	2 50	26	21
DUONG, R	1539*	4	2	0 -23	20	12
ALFONSO, E	1467	0	1	0 0	57	50
BABINEC, J	1383*	3	1	0 47	24	19

**WALGREEN FORKS**

NAME	RATING	SEASON RATING			TOTAL GAMES	RATED GAMES
		W	L	D CHANGE		
FRISKE, T	1976C	1	6	2 -83	191	173
SANTIAGO, T	1923C	5	4	0 9	124	115
HAMELINK, N	1719*	2	7	2 -99	22	18
HUGHES, N	1611C	2	4	2 -19	191	178
DOSIBHATLA, D	1607*	5	2	2 15	17	13
PERSONS, J	1403#	3	4	0 0	8	5
NICK, X	0000?	1	4	0 0	5	4

**WALGREEN SKEWERS**

NAME	RATING	SEASON RATING			TOTAL GAMES	RATED GAMES
		W	L	D CHANGE		
LEVENSON, S	2044	4	3	0 20	28	27
GRANATA, M	1884*	4	3	1 11	19	19
BIALON, D	1767*	2	3	2 -37	14	14
MCGUIRE, A	1751#	1	4	0 -17	7	6
ANSARI, N	1572	3	4	1 -15	51	46
KANNAPPAN, V	0000?	1	2	0 0	3	2
KACZYNSKI, W	0000?	1	6	0 0	7	5

**MOLEX**

NAME	RATING	SEASON RATING			TOTAL GAMES	RATED GAMES
		W	L	D CHANGE		
REICH, T	1773	0	8	1 -62	48	44
ZADEREJ, V	1621	1	8	0 -57	51	46
HENDRICKSON, B	1532	2	6	1 -3	55	53
MCGOWAN, D	1468	4	4	0 49	43	37
RUFUS, B	1309	1	4	0 -32	31	28
DEICHMANN, E	1287	3	5	2 8	50	44
MUELLER, R	1063*	1	2	1 39	24	14

**FERMILAB**

NAME	RATING	SEASON			RATING CHANGE	TOTAL GAMES	RATED GAMES
		W	L	D			
GARZON, G	2282	8	2	1	-1	72	71
SPIEGEL, L	1943T	4	3	2	-10	314	288
SEDOV, A	1780*	3	1	2	-6	14	14
GAINES, I	1729T	3	4	2	-24	319	294
STAPLES, C	1621	2	0	0	30	87	76
DEGRAF, B	1497	1	2	4	-39	42	40
CEASE, H	1479	1	0	0	15	53	40
ANNIS, J	1450*	2	2	2	-29	17	14
GOLOSSANOV, A	1089#	1	3	0	0	8	5
DRENDEL, B	1010#	1	3	1	0	7	5

**ARGONNE ROOKS**

NAME	RATING	SEASON			RATING CHANGE	TOTAL GAMES	RATED GAMES
		W	L	D			
BENEDEK, R	2133T	2	1	0	-3	362	350
HILL, R	1987D	1	4	2	-7	222	213
SUAREZ, E	1861	1	2	2	-7	100	97
BAURAC, D	1799T	2	2	3	-8	320	287
YACOUT, A	1598	1	0	1	14	52	48
DECMAN, S	1560D	0	1	0	-2	299	268
DERIY, B	1533*	3	1	0	60	19	18
GRUDZINSKI, J	1453	1	0	1	32	46	37
KUHLMANN, S	1385*	1	2	0	17	18	16
RAMANATHAN, N	1307#	2	5	0	-11	7	6
HLOHOWSKYJ, I	1032*	3	3	0	109	23	16
BERNSTEIN, J	0000?	0	3	0	0	3	2
SMITH, JEFF	0000?	0	2	0	0	2	2

**LUCENT TECH. TYROS**

NAME	RATING	SEASON			RATING CHANGE	TOTAL GAMES	RATED GAMES
		W	L	D			
ALLSBROOK, F	2117	4	4	5	-22	30	30
DIAZ, P	2067D	6	3	3	-19	216	203
STOLTZ, B	1904D	2	2	1	0	206	187
GUIO, J	1805C	2	5	0	-47	182	179
DOBROVOLNY, C	1757D	7	5	0	-13	223	205
BUCHNER, R	1668C	3	2	0	9	154	146
DENMARK, T	1664	0	0	1	-18	43	39
HAHNE, D	1611C	5	3	3	-34	184	155
VAIL, M	1603	7	1	1	-27	63	55
BYRNE, M	1390	4	0	1	24	32	28
KARPIERZ, J	1297	0	1	0	-3	70	44

**LUCENT TECH. DRAGONS**

NAME	RATING	SEASON			RATING CHANGE	TOTAL GAMES	RATED GAMES
		W	L	D			
TEGEL, F	2063Q	3	1	5	26	441	403
LUDWIG, T	1993C	2	2	3	-20	188	185
MARCOWKA, R	1919T	2	2	3	-48	314	293
PEHAS, A	1852C	1	0	1	3	164	156
EUSTACE, D	1509C	6	3	0	46	200	161
STAMM, V	1506T	2	2	1	9	359	335
THOMAS, J	1481D	3	4	0	-5	277	227
KOMORAVOLU, K	1396	4	0	2	82	43	36
BREYER, A	1271	0	3	1	-60	50	44

**PAWNS**

NAME	RATING	SEASON			RATING CHANGE	TOTAL GAMES	RATED GAMES
		W	L	D			
KRAS, T	2162C	2	0	2	23	106	98
LATIMER, E	1973T	0	2	1	-27	315	283
ELLICE, W	1812C	2	4	3	-7	177	168
FRANEK, M	1728D	3	1	8	53	269	217
FAZEKAS, J	1625	0	1	0	-19	1	1
FABIJONAS, R	1485T	0	8	1	-74	348	313
MIKULECKY, B	1404D	3	2	1	8	223	199
DYCKZKOWSKI, R	1375	0	1	2	-4	84	66
O'DELL, DW	1364D	4	2	0	-14	208	194
SPITZIG, M	1354	0	5	3	-40	17	14
CHRISTIAN, T	0000?	0	0	1	0	3	2

**ST CHARLES CHESS CLUB**

NAME	RATING	SEASON			RATING CHANGE	TOTAL GAMES	RATED GAMES
		W	L	D			
MARSHALL, J	2236	5	2	3	-13	39	39
WIEWEL, J	2056	7	2	1	49	43	43
SPLINTER, J	2056	5	1	3	18	33	33
MEISSEN, B	1766	1	1	1	-26	20	19
SUITS, J	1753	7	3	1	121	35	35
VON HATTEN, J	1650	4	2	1	110	7	7
DJORDJEVIC, V	1625	3	1	0	2	12	10
SMITH, D	1541	5	2	2	108	9	8
STOSKUS, A	1491	3	1	3	45	20	14
POWERS, E	1441	1	4	1	-57	11	9
MCGEE, M	1438	1	1	1	0	15	12
GIBSON, B	1301	0	1	0	-7	1	1

**BP CHICAGOLAND**

NAME	RATING	SEASON			RATING CHANGE	TOTAL GAMES	RATED GAMES
		W	L	D			
COULTER, D	1904	1	3	2	10	53	49
DENEEN, D	1441	0	3	0	-22	27	26
RINGENBERG, T	1434	0	4	0	-40	59	47
HAYES, D	1346#	0	1	0	0	5	5
SUARNAKANTI, R	1270*	2	3	2	93	22	19
ZUBIK, J	1186*	0	3	0	-14	16	13
MANILA, M	1105	1	6	0	-36	33	26
HERNANDEZ, F	955*	2	4	0	-7	21	19
HERR, T	0000?	0	2	0	0	2	1
MAMMA, M	0000?	0	1	0	0	1	1

**ST CHARLES BAKER**

NAME	RATING	SEASON			RATING CHANGE	TOTAL GAMES	RATED GAMES
		W	L	D			
NGUYEN, T	2229	6	1	2	52	23	22
RASO, P	2138	5	0	1	73	19	17
FREIDEL, JESSE	2000	5	1	5	19	43	42
FREIDEL, P	1971	9	2	1	42	39	37
FREIDEL, JER	1829	3	0	0	18	33	32
WANG, ANDREW	1821	4	2	1	6	25	23
ALBERTS, W	1562	5	5	2	-1	40	36
JANSSEN, G	1537	3	3	5	15	32	28
BALES, R	1401	2	1	0	32	6	6
GREER, J	1378	1	2	0	-30	15	11
VOIGHT, T	1249	1	1	1	36	4	2

**DOWNERS GR CHESS CLUB**

NAME	RATING	SEASON			RATING CHANGE	TOTAL GAMES	RATED GAMES
		W	L	D			
BERBARI, N	1500?	1	1	0	0	2	2
KLUG, S	2177	3	1	5	32	9	9
KALAVAGUNTA, S	2030	3	2	4	-31	9	9
EGERTON, J	2023	3	1	2	28	24	24
POTTS, K	1838	6	2	0	36	8	8
WAKERLY, R	1793	7	3	1	83	11	10
MANEY, A	1702	3	1	3	-6	7	5
YALAVARTHI, R	1668	1	2	0	-75	3	2
CURRAN, T	1661	4	3	1	-37	13	13
SMITH, BR	1610C	3	0	1	10	170	132
VECANSKI, D	1608	4	2	1	22	7	6
GONZALES, T	1594	3	2	0	-44	5	4
SCHULZ, N	1508	0	0	0	0	0	0
CAPUTO, W	1481	0	1	0	-34	1	1
SCHILLER, A	1352	0	1	0	-16	1	1
ALOP, J	0000?	0	1	0	0	1	1

## **ROUND TWO – Associating at Associates**

**“It was a Guinness season”, huh ? Maybe so, but the playoffs revealed that all the teams still had some zip and weren’t ready to fizz into thin air.**

**The major (and obvious) battles were over; the top teams**  
from each division were determined, the seeds  
had been announced, eight teams  
finally committed.

*As examined last issue*, the First Round finished with teams in this order:

**One point** : Hedgehogs and St Charles CC

**Half point** : St Charles Baker CC, UOP, Northwestern University, ALU Tyros

**No points** : Downers Grove CC and Motorola Kings

Normally the attitude coming into Playoff Saturday is that one of the round-one winners will become the new champion; in a 3-round tournament, wins are long-jumps toward the title. But the past couple of years has seen some all-out board wars, with an unusual number of draws resulting (even the first round had borne this out). With the two winners paired, the worst case for the remaining teams was to hope for a take-down of the lone unbeaten contenders and turn the contest into a literal free-for-all.

One other issue had also been settled, however. The playing site had been announced early (for once) thanks to some advanced work by **Matt Vail** (ALU Tyros / Computer Associates). There was no need for discussion when his offer to host came in as the Computer Associates cafeteria is a most bright and comfortable place to play.

It was exhilarating arriving customarily early and finding a large group similarly anticipating the day’s captivating episodes. Happy conversations were filling the room. Time was reserved for a special award given to Marty Franek (see previous issue). The smell of coffee and doughnuts filled the air. The round was ready to begin !

The marquee matchup between the unbeaten entries was a team-win. With the bottom three boards completing first and gaining two points for their cause, the second-board win by **Michael Rauchman** sealed the deal for the Hedgehogs, making them the clear favorite to win the title.



Meanwhile the half-pointers were battling to maintain their close-second status. Oddly, the Tyros-Bakers games finished in board order. One highlight here was the Tyros’ first board arriving with half his clock gone, but coolly playing and actually being ahead in time by mid-game ! Unfortunately this and board two were losses- and a draw next on board three was spelling the end for the Tyros’ bid.

The NWU-UOP battle was similarly determined by early high-board wins. UOP has this weird ability to place their players on about any board, so you never know what their line-up will be. On this occasion, however, their usual third board was playing the fifth; this seeming advantage was wiped-out by an uncharacteristic blunder. Their listed third board player, the recently re-joined **John Van Meer**, played a most enterprising strategy- sacrificing two pieces within the first twenty moves with a naked King at f7, despite playing the Black side! This sounds suicidal, but in the game’s notes, we find that Black maintains the advantage. The NWU team doesn’t die easily and these opportunities were gladly accepted. Solid play on their other boards gained the win.

The final match would seem to be just for fun—but viewing the games will prove this was not close to the case. The board three contest between **Ralph Wakerly** and **Cliff Wallach** was a mind-boggling gem which nearly set my laptop on fire as Deep Shredder merrily sacrificed to win the Black King! You will want to examine the whole set, but another not to miss was the cute mate played on board two in a wild time scramble !

***The following pages of analyzed games*** prove it – the teams were just warming up !

# ROUND TWO, Match 1 : Hedgehogs [1-0] vs St Charles CC [1-0]

Finishing Order of the boards: 4, 5, 6, 2, 1, 3

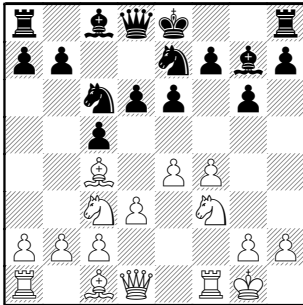
## Board 1, Hedgehogs-St Chas CC

Franklin,Dave (2203) –  
Marshall,Jim (2218) [B23]

1.e4 c5 2.Nc3 d6 3.f4 g6 4.Nf3 Bg7  
5.Bc4 [5.d4; 5.Bb5+] 5...Nc6 [5...e6;  
5...a6] 6.0-0 e6 7.d3

The Pawn sac 7.f5 was all the rage in the 1980's when this Sicilian Grand Prix first became popular.

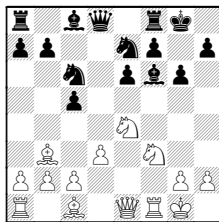
7...Nge7



8.Qe1 0-0 [8...Nd4] 9.Bd2 Too slow for such a sharp system - both examples I find were in Black's favor.

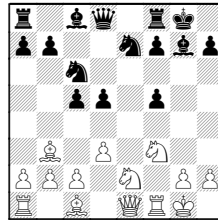
9.f5 occurs in more than half the games  
9...d5 10.Bb3 c4

A) 10...dxe4 11.f6 Bxf6 12.Nxe4



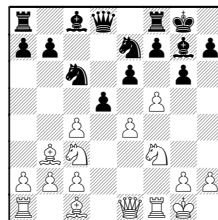
12...Bg7 13.Bg5 and White has plenty of piece pressure for his Pawn

B) 10...gxf5 11.exd5 exd5 12.Ne2



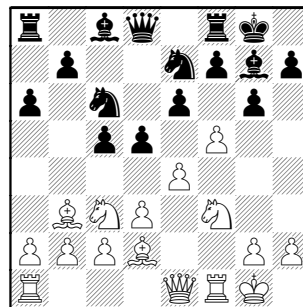
12...Ng6 13.Nf4 Re8 14.Qg3 Be6

11.dxc4



11...d4 (11...dxe4)

9...d5 10.Bb3 a6 11.f5

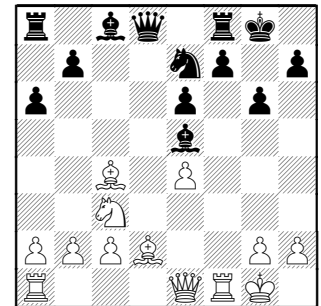


Play has transposed back into the 9 f5 lines previously sketched

11...c4 12.f6 Bxf6 13.dxc4 dxc4

13...d4;  
13...dxe4 shows why 9 Bd2 doesn't belong - it's blocking the opened d-file

14.Bxc4 Ne5 15.Nxe5 Bxe5



However, Black's development does lag a bit.

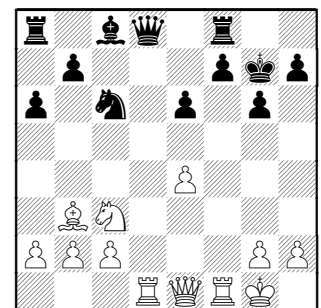
16.Bb3 Nc6 too slow on Black's part

16...Qd6 at least develops with a threat 17.g3 (17.Qh4? Qxd2) 17...b5 and Black sees play against the King develop, but nothing too scary at this point.

17.Bh6 Not to harp on it, but note the Bishop could have gotten here in one move, not two.

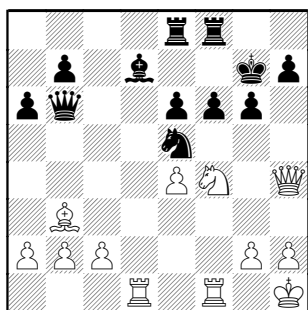
17...Bg7 I would've preferred to keep my perfectly place dark-squared Bishop with 17...Re8

18.Bxg7 Kxg7 19.Rd1



19...Qb6+ [19...Qc7 then Nc6-e4 would carry the threat Ne5-c4]

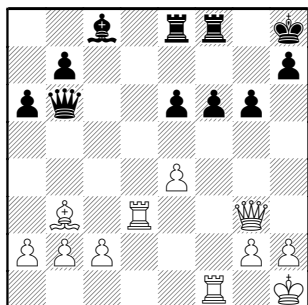
20.Kh1 Ne5 21.Qh4 [21.Qg3] 21...f6  
22.Ne2 Bd7 [22...a5 idea a5-a4 to weaken the Queenside Pawns] 23.Nf4  
Rae8



**24.Qg3**

24.Rd2 to double;  
24.Qh3 may gain a combination against Bc7 or e6

**24...Kh8 25.Nd3 Nxd3 26.Rxd3 Bc8**

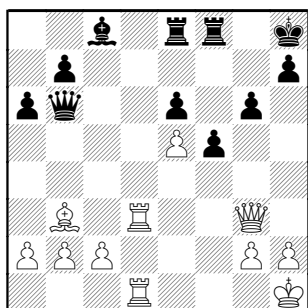


Once again, too defensive-- 26...Bc6 or 26...Bb5 27.c4 Bc6

**27.e5 f5**

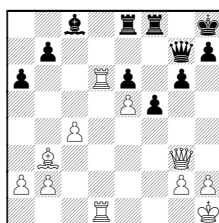
DS says there's less potential harm with 27...fxe5 28.Qxe5+ Kg8

**28.Rfd1**



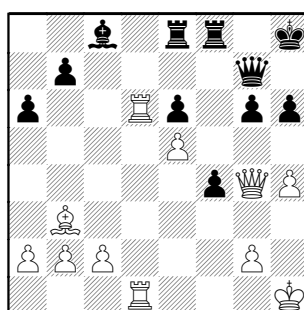
**28...Qc7** [28...f4 idea Rf5 also begins a counterattack against Pe5] **29.Rd6** [29.Rd4; 29.Rc3] **29...Qg7 30.h4**

DS suggests a strong game for White by 30.c4

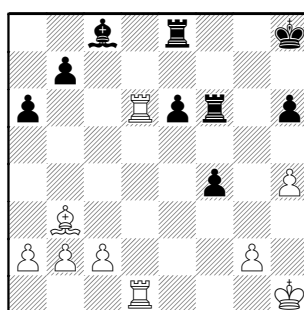


idea Qc3 to soften the Queenside

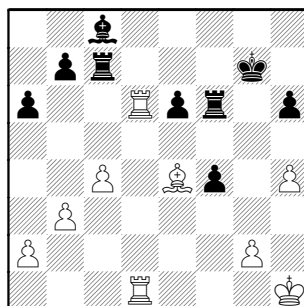
**30...f4 31.Qg5 h6 32.Qg4**



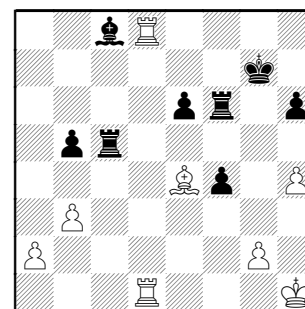
**32...Qxe5 33.Qxg6 Qf6 34.Qxf6+ Rxf6**



This, however, is dead even **35.Bd5 Kg7 36.Be4 Re7** [36...Rf7] **37.c4 Rc7 38.b3**



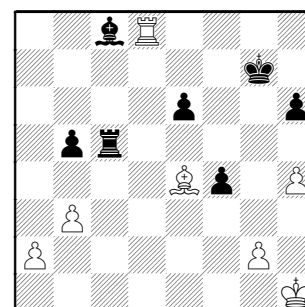
**38...Rc5?** [38...Rff7] **39.Rd8?** [39.Bxb7 wins a solid Pawn] **39...b5 40.cxb5 axb5**



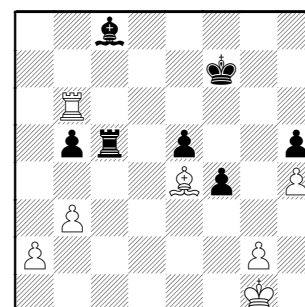
**41.Re8**

41.a4 At least gets moving while Black is a bit tied up (Bc8 needs defending and Rf6 out of play)

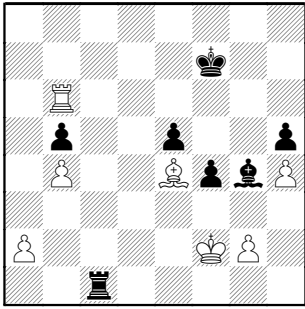
**41...Rf8 42.Rxf8 Kxf8 43.Rd8+ Kg7**



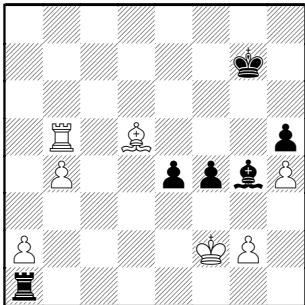
**44.Kg1 e5 45.Rd6 h5 46.Rg6+ [46.Kf2] 46...Kf7 47.Rb6**



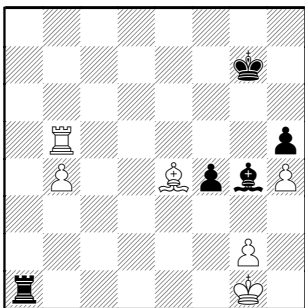
**47...Bg4 48.b4 Rc1+ 49.Kf2**



**49...Ra1 [49...Bd7] 50.Bd5+ Kg7**  
**[50...Ke7] 51.Rxb5 e4**



**52.Bxe4 Rxa2+ 53.Kg1 Ra1+ 54.Kf2**  
**Ra2+ 55.Kg1 Ra1+**

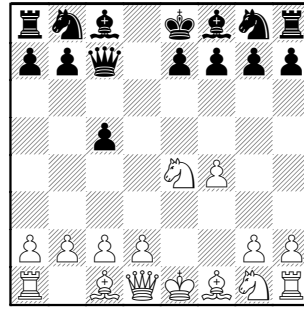


**56.Kh2 Ra2 57.Kg1 ½-½**

## Board 2, St Chas CC-Hedgehogs

**Splinter, Joe (2060) -**  
**Rauchman, Michael (2063) [B21]**

**1.e4 c5 2.f4** Interesting that the first two boards start similarly. Board One included first Nc3 which stops Black's reply in the current game.  
**2...d5 3.Nc3** [3.exd5 is the most popular reply] **3...dxe4** [3...e6; 3...d4] **4.Nxe4 Qc7**

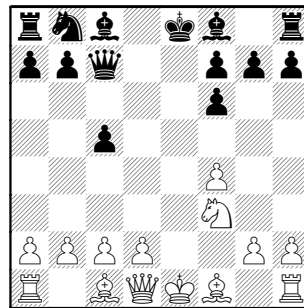


**5.Nf3 [5.d3; 5.Bb5+] 5...Nf6**

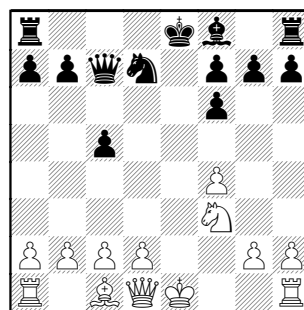
**A) 5...Qxf4 6.Bb5+ (6.Nxc5) 6...Bd7**  
**7.Qe2**

**B) 5...Bg4**

**6.Nxf6+ [6.d3] 6...exf6**

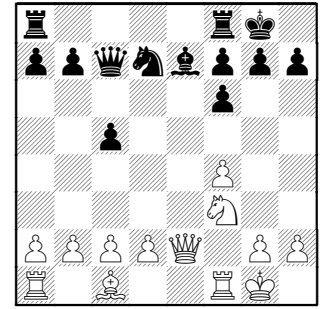


**7.Bb5+ Bd7 8.Bxd7+ Nxd7**



White has traded away any early advantage.

**9.Qe2+ Be7 10.0-0 0-0**

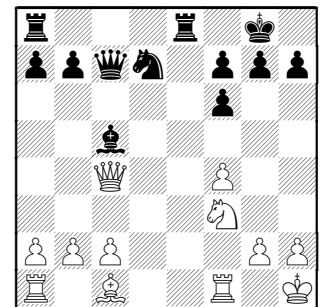


**11.d4**

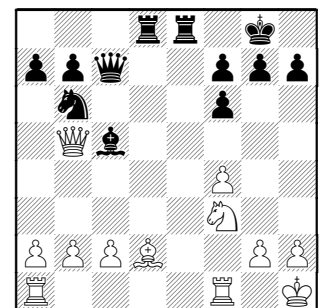
Of course, the Queen is lost after **11.Qxe7 Rfe8**

**11...Bd6 12.dxc5** White's incessant trading is only bringing his opponent's pieces to active posts

**12...Bxc5+ 13.Kh1 [13.Be3? Rfe8]**  
**13...Rfe8 14.Qc4**



**14...Nb6 15.Qb5 Rad8 16.Bd2**

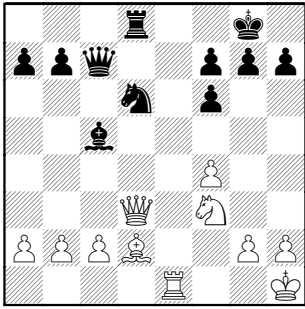


**16...Nc8**

**A) 16...Bd6 17.Rfe1**

**B) 16...Nd5** looks more active, with a threat to f4, but Bc5 could hang.

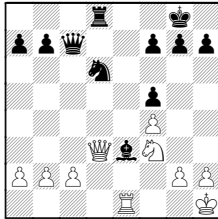
**17.Rae1 Nd6 18.Qd3 Rxe1 19.Rxe1**



**19...f5** Nicely using the doubled Pawns to advantage- the other f-Pawn may be used to attack e5

**20.Be3 Ne4**

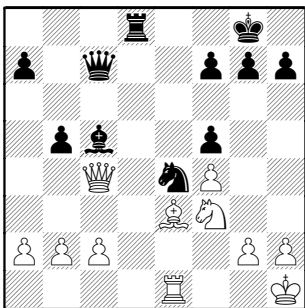
20...Bxe3



21.Qxe3

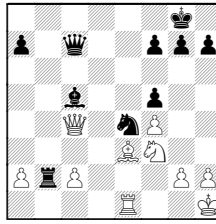
(21.Rxe3? Ne4 and White has some backrank issues)  
21...Qxc2 22.Qxa7 Qxb2 wins a Pawn, but the extra one is also doubled

**21.Qc4 b5!**



**22.Qxb5 Bxe3**

22...Rb8 idea Rxb2, really messes up White's Queenside 23.Qc4 but, as always, tactics reign supreme:  
23...Rxb2?



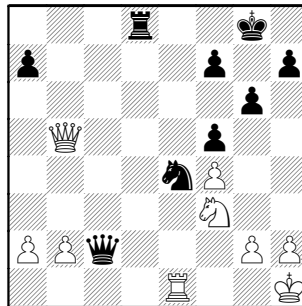
24.Bxc5! Nxc5

(24...Qxc5?? 25.Qxc5 Nxc5 26.Re8#)  
25.Re8#

**23.Rxe3 Qxc2** again, the backrank weakness causes issues

23...g6 may help Black keep an initiative

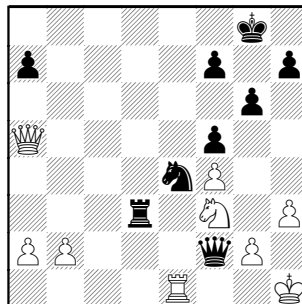
**24.Re1 g6**



**25.h3?** makes a fatal weakness at g3  
[25.Qe2] **25...Qf2 26.Qa5**

26.Qe2?? is now too late, thanks to that g3 hole 26...Ng3+ 27.Kh2 Nxe2

**26...Rd3** with idea Rxf3, Ng3#



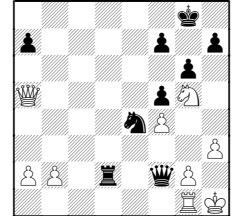
**27.Ng5** Stops the threats to f3 and h3, while attacking the mating piece at e4. But also gives up the defense of another key square, d2 ...

The rest of the game hints at time trouble.

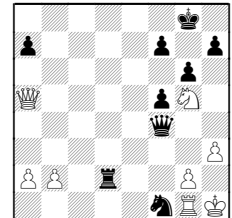
27.Ne5?? Rxf3+ 28.gxf3 Ng3#

**27...Ng3+**

A more direct way to work the game's themes is 27...Rd2 28.Rg1



28...Ng3+ 29.Kh2 Nf1+ 30.Kh1 Qxf4

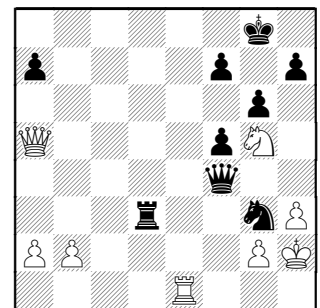


and mate is near. Note not even 31.Nf3 works: 31...Qh2+!

(31...Qxf3? 32.Qxd2 (32.gxf3?? Rh2#) )

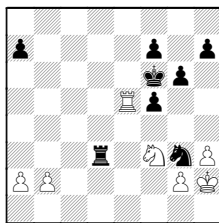
32.Nxh2 Ng3#

**28.Kh2 Qxf4**

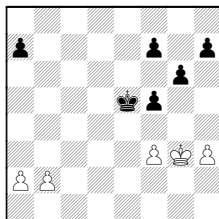


**29.Re8+ Kg7 30.Re1**

There's no relief in trading now:  
30.Qe5+ Qxe5 31.Rxe5 Kf6 32.Nf3

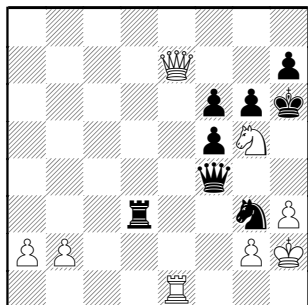


32...Rxf3 33.gxf3 Kxe5 34.Kxg3



although Black will have to neutralize the potential threat of White making an outside Queenside passer

30...f6 [30...Qxg5] 31.Qxa7+ Kh6  
32.Qe7



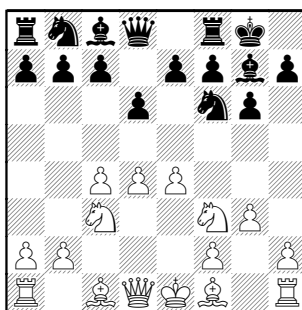
32...Ne4+ 33.g3 Qxg3+ 0-1

### Board 3, Hedgehogs-St Chas CC

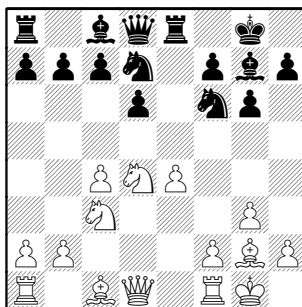
Smith, Mack (1982) –  
Suits, John (1694)

[E68]

1.d4 Nf6 2.Nf3 g6 3.c4 Bg7 4.Nc3 0-0  
5.e4 d6 6.g3



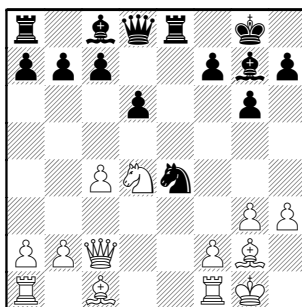
6...e5 7.Bg2 exd4 8.Nxd4 Re8 9.0-0  
Nbd7



10.h3 [10.f3; 10.Re1] 10...Nc5 [10...a6;  
10...c6] 11.Qc2? The source of all  
White's problems.

11.Re1 is always played here

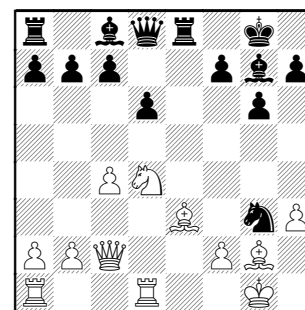
11...Ncx e4 12.Nxe4 Nxe4



Black stole a Pawn due to the weakness  
of d4 caused by White's 11th move.

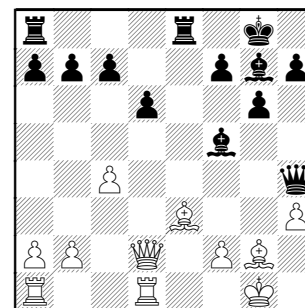
13.Be3 [13.Bxe4 Bxd4] 13...Nxb3! the  
hits just keep coming- of course here  
Black is undermining e3 support.

14.Rfd1



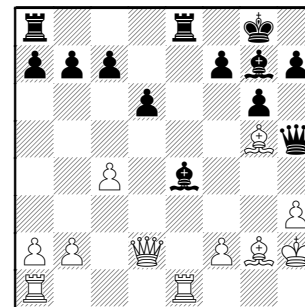
14...Nf5 15.Nxf5 Bxf5 one more reason  
the Queen doesn't belong on c2- which  
is very instructive because in other  
King's Indian positions, the Queen is  
well-placed there. Here, the Bishop can't  
come onto the b1-f5 diagonal.

16.Qd2 Qh4



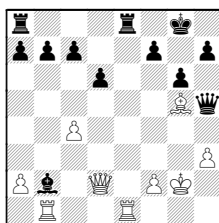
Geesh, White's down two Pawns and  
now has two more hanging. Even Pb7  
doesn't help, because Rab8 would  
counterattack to b2.

17.Kh2 Be4 [17...Qxc4; 17...Be5+]  
18.Bg5 Qh5 19.Re1



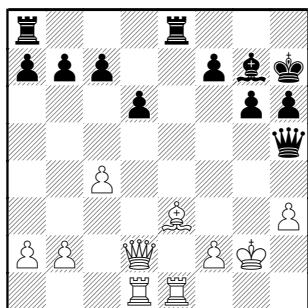
19...Bxb2 [19...Bxb2 now or next move]  
20.Kxg2 h6

20...Bxb2 21.Rab1

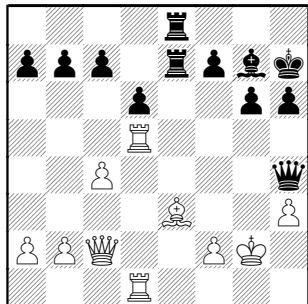


21...Bc3!

**21.Be3 Kh7 [21...Qh4] 22.Rad1**

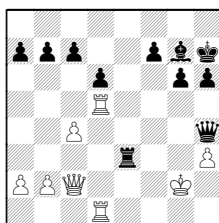


**22...Re7 23.Qc2 Rae8 24.Rd5 Qh4  
25.Red1?**



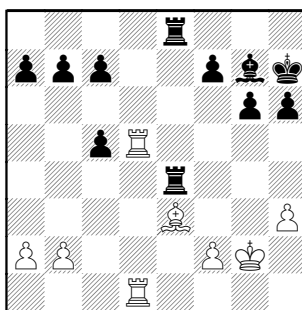
**25...Qe4+**

25...Rxe3! 26.fxe3 Rxe3

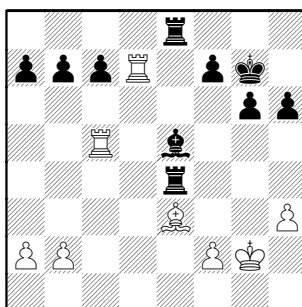


will corral the King

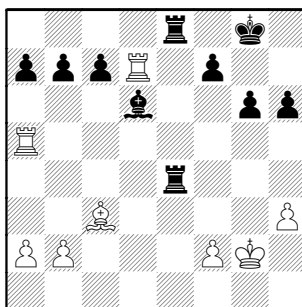
**26.Qxe4 Rxe4 27.c5 dxc5**



**28.Rxc5 [28.Rd7] 28...Be5 [28...c6;  
28...R4e7] 29.Rd7 Kg7**



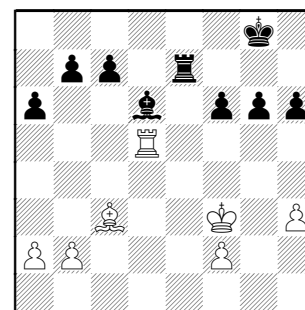
**30.Bd2 [30.Kf3 Bd6] 30...Bd6 31.Bc3+  
Kg8 32.Ra5**



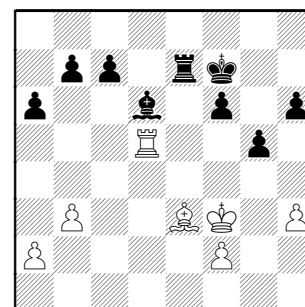
**32...a6**

32...Ra8 idea Kf8-e8 33.Rb5 Rb8 34.Bb4

**33.Rd5 R4e7 34.Rxe7 Rxe7 35.Kf3 f6**

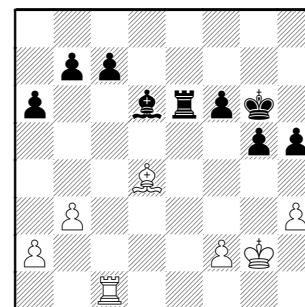


**36.b3 [36.Bxf6? Rf7] 36...Kf7 37.Bd2 g5  
[37...Ke6] 38.Be3**



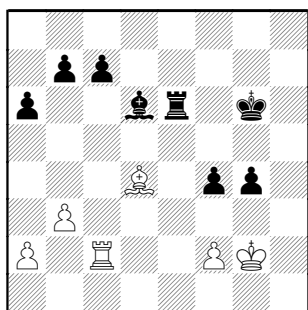
**38...Re4** <obviously not played, but  
makes the rest of the score work>

**39.Rd1 Kg6 40.Ba7 h5 41.Rc1 Rf4+  
42.Kg2 Re4 43.Bd4 Re6**

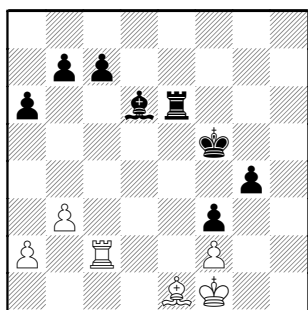


This is the correct position at this point  
(as I remember it!).

**44.Rc2 f5 45.Be3 f4 46.Bd4 g4 47.hxg4  
hxg4**

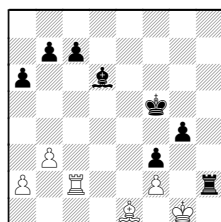


48.Kf1 Kf5 49.Bc3 f3 idea g4-g3 50.Be1



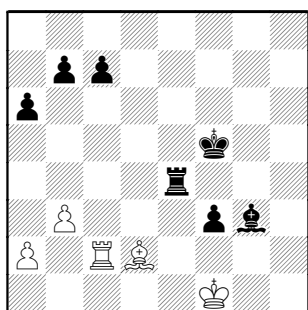
50...Re4

50...Rh6 51.Kg1 Rh2

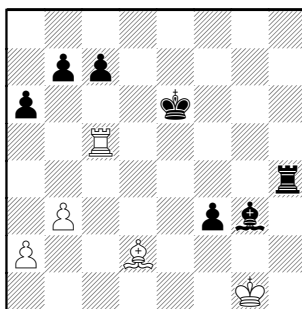


idea g4-g3, as the f-Pawn is pinned

51.Bc3 g3 52.fxg3 Bxg3 53.Bd2



53...Rh4 54.Rc5+ Ke6 55.Kg1

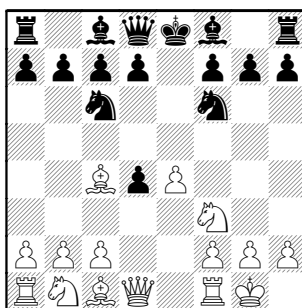


55...f2+ 56.Kg2 Rh2+ 0-1

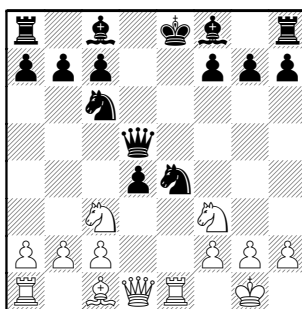
### Board 4, St Chas CC-Hedgehogs

Von Hatten, John (1605) –  
Seet, Paul (1865) [C56]

1.e4 e5 2.Nf3 Nc6 3.d4 exd4 4.Bc4  
[4.Nxd4] 4...Nf6 [4...Bc5] 5.0-0



[5.e5] 5...Nxe4 6.Re1 d5 7.Bxd5 Qxd5  
8.Nc3

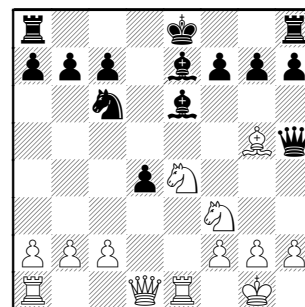


8...Qh5 [8...Qa5 is almost always played]  
9.Nxe4 Be7

9...Be6 is always played here, apparently

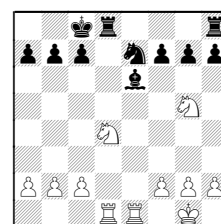
to dodge the problems with the game  
move 10.Bg5 Bb4 (10...Bd6)

10.Bg5 Be6



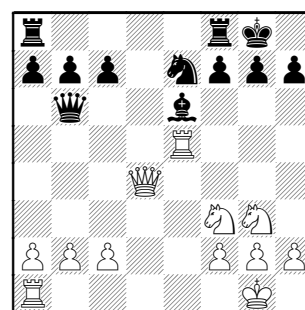
11.Bxe7 Nxe7 12.Qxd4

12.Nxd4 Qxd1 13.Raxd1 0-0-0 14.Ng5

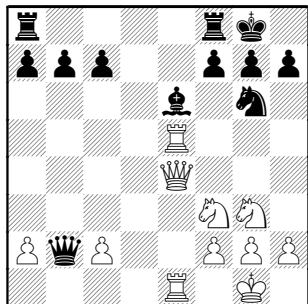


was won by White in Thorsteinsson-  
Arngrimsson, 2004

12...0-0 13.Ng3 Qa5 14.Re5 [14.b4 is  
hopeful to DS] 14...Qb6 equalizing

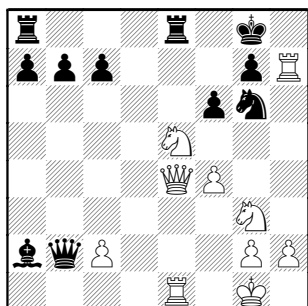


15.Qe4? Qxb2 16.Re1 Ng6

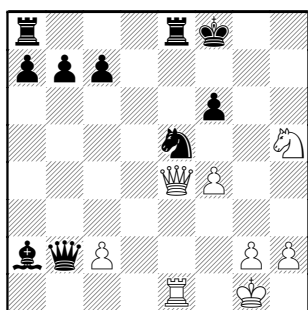


Black is now clearly on top

**17.Rh5 Rfe8** [17...c6 idea Qxa2] **18.Ne5 Bxa2 19.f4 f6 20.Rxh7**



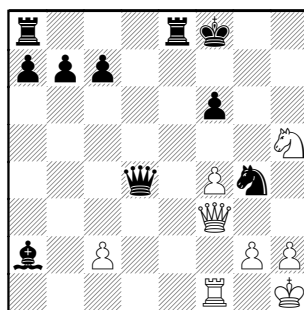
**20...Nxe5** [20...Qb6+ 21.Kh1 fxe5] **21.Rxg7+ Kxg7 22.Nh5+** [22.fxe5 Qxe5] **22...Kf8**



**23.Rf1**

**23.fxe5 Rxe5 xRe1, Nh5;**  
**23.Nxf6 Nf3+ 24.Qxf3 Rxe1+**

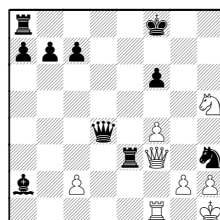
**23...Ng4 24.Qf3 Qd4+ 25.Kh1**



**25...f5**

Lots of forced lines, all killing for Black, begin with 25...Nf2+! 26.Rxf2

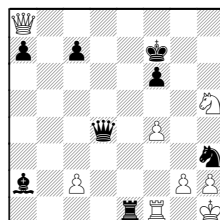
[26.Kg1 Nh3+ 27.Kh1 Re3]



**28.Qxb7**  
(28.Qg4 Nf2+)

**28...Re1 29.Qxa8+**  
(29.Rxe1 Qg1+)

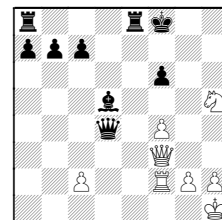
**29...Kf7**



**30.Qf3**  
(30.gxh3 Rxf1+ 31.Kg2 Qg1#)

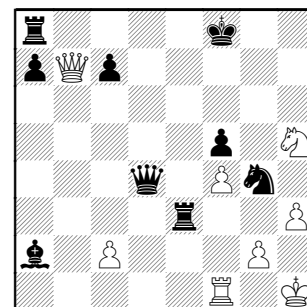
**30...Qg1+]**

26...Bd5  
(diagram follows)



27.Qg3 Re1+ mating, but Black has no need to calculate all that fancy stuff.

**26.h3 Re3 27.Qxb7**

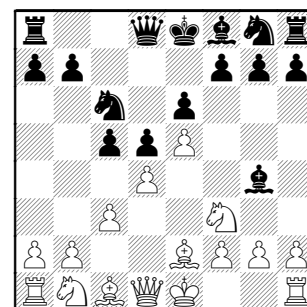


**27...Bd5 28.Qb1 Rxh3# 0-1**

### Board 5, Hedgehogs-St Chas CC

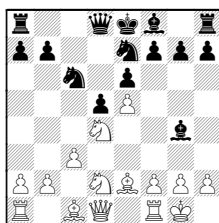
**Kratka, Milan (1633) –**  
**Smith, Derek (1463)** [B12]

**1.e4 c6 2.d4 d5 3.e5 c5 4.Nf3 Nc6 5.c3**  
a bit odd **5...Bg4 6.Be2 e6**



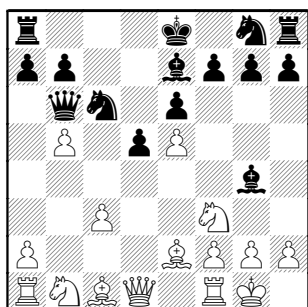
**7.0-0** [7.Be3; 7.Qb3; 7.Nbd2] **7...Qb6**

7...Nge7 8.Nbd2 cxd4 9.Nxd4



9...Bxe2 10.Qxe2 Nxd4 11.cxd4 Qb6  
went Black's way in a master game.

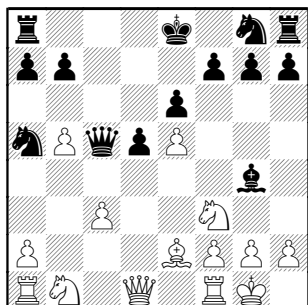
8.dxc5 Bxc5 9.b4 Be7 10.b5



10...Na5

10...Bxf3 11.bxc6 Bxe2

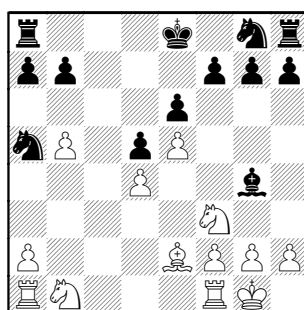
11.Be3 Bc5 12.Bxc5 Qxc5



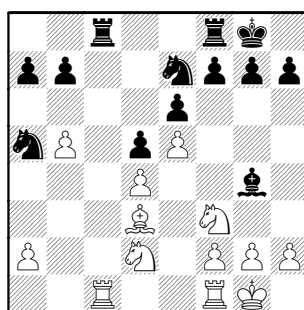
13.Qd4 forcing Black's reply due to weak Bg4

If 13.Qa4, hitting two loose pieces, Black does OK with 13...Bxf3 (or 13...Nc4)

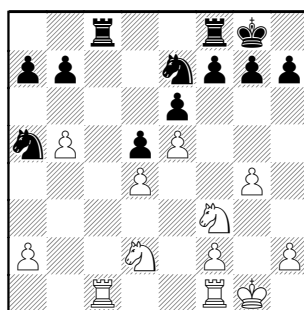
13...Qxd4 14.cxd4



White has cleaned up his Pawn weaknesses 14...Rc8 15.Nbd2 Ne7 16.Rac1 0-0 17.Bd3

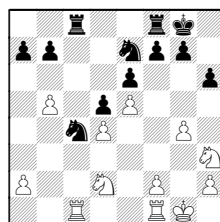


17...Bf5 18.Bxf5 Nxf5 19.g4 Ne7



20.Ng5 I guess the threat is f2-f4-f5  
20...Rxc1

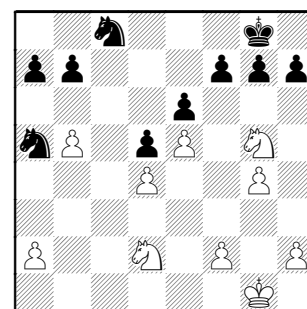
After 20...h6 21.Nh3 Nc4



Black controls the c-file as trading Knights would open the d5 square (along

with an attack on the backward Pawn on d4.

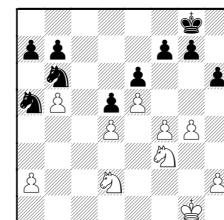
21.Rxc1 Rc8 22.Rxc8+ Nxc8



Knight endings are notoriously tricky, Black has given away all potential and now is back to an even fight.

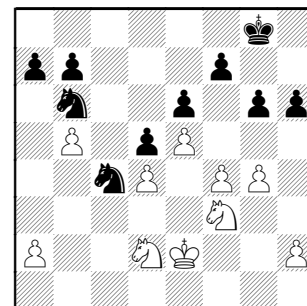
23.f4 h6 24.Ngf3 g6 Black shouldn't fear f4-f5

Probably better was 24...Nb6



idea Na4-c3 25.f5 Nbc4

25.Kf2 Nb6 26.Ke2 Nac4



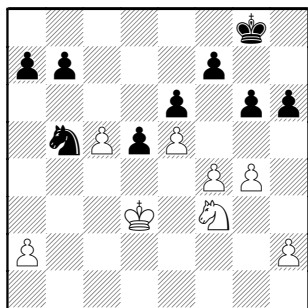
27.Kd3

27.Nb1 covers further entry squares until the King can travel to b5. Then White holds the advantage of an active King

**27...Na3** the b-Pawn is a goner **28.Nb3 Na4!**

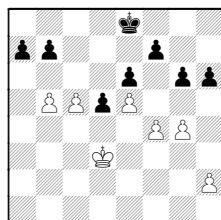
Not **28...Nxb5 29.Nc5** wins Black's b-Pawn

**29.Nc5 Nxc5+ 30.dxc5 Nxb5**



Black has won a Pawn and has potential for another. **31.a4 Nc7 32.Nd4 Na6**

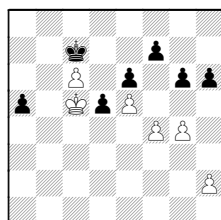
I'd put a premium on an active King:  
**32...Kf8 33.Nb5 Nxb5 34.axb5 Ke8**



**35.c6**

(35.Kc3 Kd7 idea a6,Kc6,etc works out much the same way)

**35...bxc6 36.bxc6 Kd8 37.Kd4 Kc7 38.Kc5 a5**

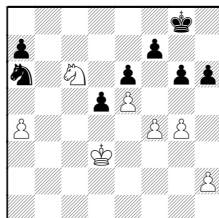


Classic outside passer play **39.Kb5 a4** easily wins for Black

**33.Nb3**

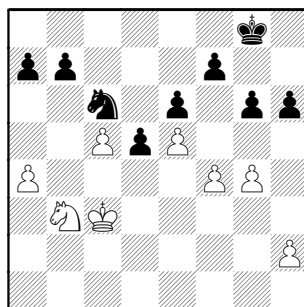
**33.c6? Nb4+** wins it

White's idea was **33...bxc6? 34.Nxc6**

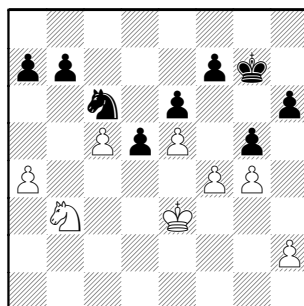


is less clear)

**33...Nb4+ 34.Kc3 Nc6**



**35.Kd3 g5 36.Ke3 Kg7**



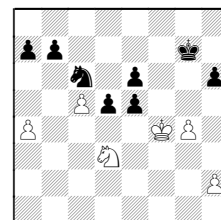
**37.Nc1**

**A) 37.fxg5 hxg5** and Black makes a second passer with the unstoppable Nxe5 (so **37...Nxe5** isn't necessary) ;

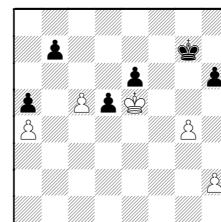
**B) 37.Kf3 f6** makes that passer without winning the e-Pawn

**37...Kg6**

**37...f6 38.Nd3 gxf4+ 39.Kxf4 fxe5+**

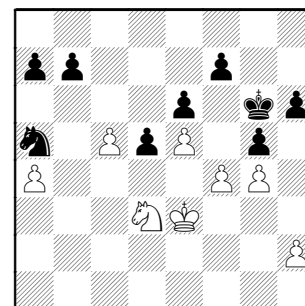


**40.Nxe5 Nxe5 (40...Kf6 41.Nd7+) 41.Kxe5 a5**

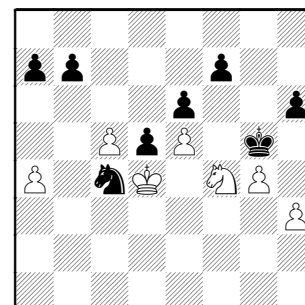


White can't advance his King due to the d-passer – of course, Black has a similar problem against a potential g-passer.

**38.Nd3 Na5**



**39.h3 Nc4+ 40.Kd4 gxf4 41.Nxf4+ Kg5**

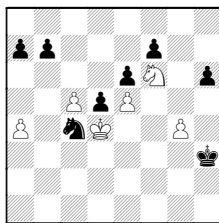


**42.Ng2**

42.Nh5 Kh4 43.Nf6

43.c6 bxc6 44.Kc5 Nxe5

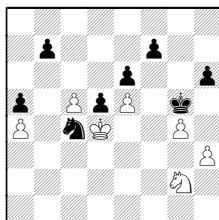
43...Kxh3



44.Ng8 Kxg4 45.Nxh6+ eliminates a bunch of Pawns but doesn't change the result

42...Nb2

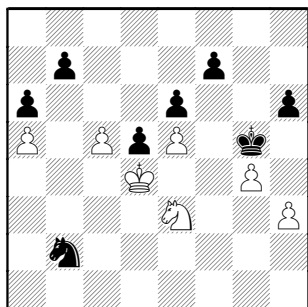
42...a5!



White is in zugwang !

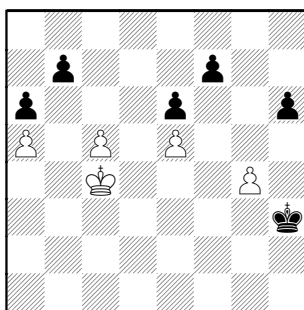
43.Kc3 (43.Ne3 Nxe3 44.Kxe3 Kh4)  
43...Nxe5

43.a5 a6 44.Ne3



wanting to trap the wayward Knight, but of course Black can lose a Pawn and still win.

44...Kh4 45.Kc3 Nc4 46.Nxc4 dxc4  
47.Kxc4 Kxh3

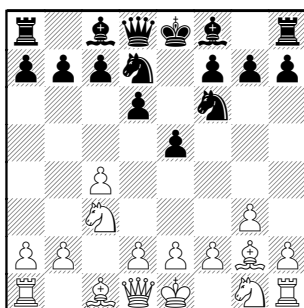


48.c6 bxc6 49.Kc5 Kxg4 50.Kb6 Black queens first. 0-1

### Board 6, St Chas CC-Hedgehogs

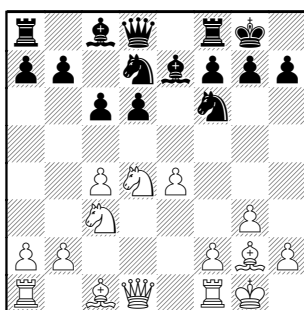
Powers,Ed (1454) – Tan,Arway (1636) [A53]

1.c4 Nf6 2.g3 d6 3.Bg2 Nbd7 4.Nc3 e5



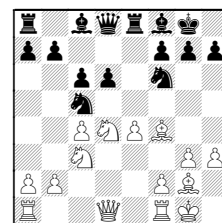
5.e4 unnecessarily hindering the fianchettoed Bishop [5.e3; 5.Nf3]

5...Be7 6.Nge2 0-0 7.0-0 c6 8.d4 [8.d3]  
8...exd4 9.Nxd4



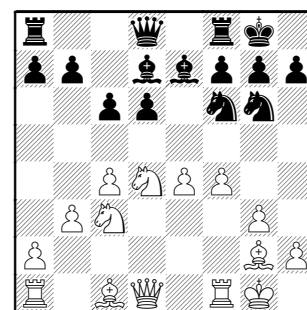
9...Ne5

9...Nc5 10.h3 Re8 11.Bf4 Bf8



was eventually won in the GM game Gelfand-Bacrot, 2007

10.b3 Bd7 11.f4 Ng6



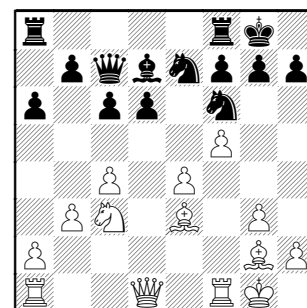
12.Nf5 Qc7

12...Qa5 attempting to be more active  
13.Bd2 Qc7

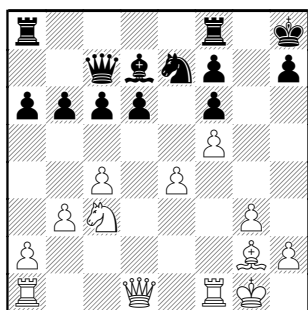
13.Nxe7+ Nxe7 14.Be3 there's no future on this diagonal

14.Ba3;  
14.f5 (idea to follow with Bf4)

14...a6 15.f5



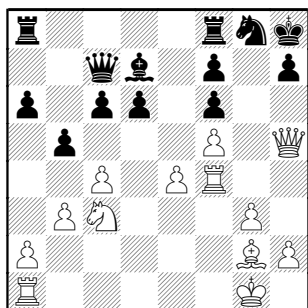
15...b6 16.Bg5 Kh8 17.Bxf6 gxf6



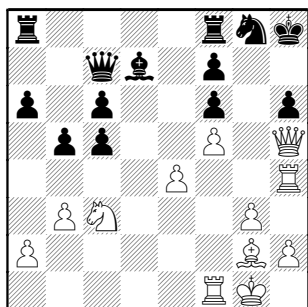
**18.Qh5** [18.Qd4 idea Rad1 or Qxf6+]  
**18...Ng8**

18...b5 idea Qa7+ and on to e3 19.Rf4  
Qa7+ 20.Kh1 Qe3 21.Rh4 h6

**19.Rf4 b5**



**20.c5 dxc5 21.Rh4 h6 22.Rf1**

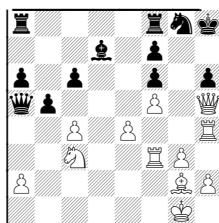


**22...Kh7**

Black can start a counterattack with  
22...c4 23.bxc4 Qa5 24.Rf3

(diagram follows)

—

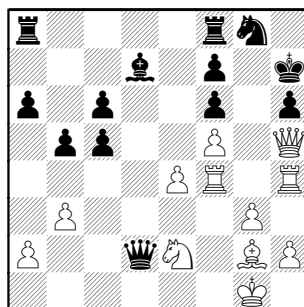


24...b4

**23.Rff4 Qd6** [23...Qe5] **24.Ne2?**

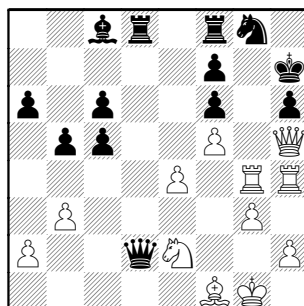
24.Rf2 Qd3 25.Nd1;  
 24.Nd1

**24...Qd2**



The Queen invasion takes over

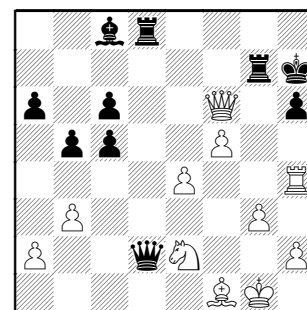
**25.Bf1 Rad8 26.Rfg4 Bc8**



**27.Rxg8**

Did White realize the Black Queen stops  
 mates beginning with Qxh6 ?

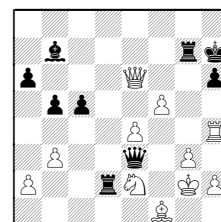
**27...Rxg8 28.Qxf7+ Rg7 29.Qxf6**



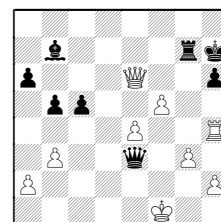
**29...Qe3+** [29...Qd6 30.Rxh6+] **30.Kg2**  
 [30.Kh1 Rd1] **30...Re8**

A long, but cute kill, is:

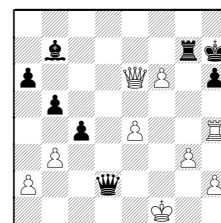
30...Rd2 31.Qxc6 Bb7 32.Qe6



32...Rxe2+ 33.Bxe2 Qxe2+ 34.Kg1  
Qe3+ 35.Kf1

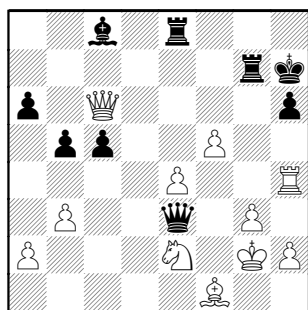


35...Qc1+ 36.Kf2 c4 37.f6 Qd2+ 38.Kf1



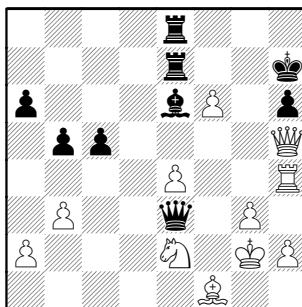
38...Qd7!

**31.Qxc6**



White has full compensation for the exchange

31...Bd7 32.Qd5 [32.Qxa6] 32...Rge7  
33.f6 Be6 34.Qh5



34...Bf7 35.Qxh6+?? obviously a  
time error 35...Qxh6 36.Rxh6+ Kxh6  
37.fxe7 Rxe7 White flagged 0-1

## ROUND TWO, Match 2 : St Charles CC [1-0] vs ALU Tyros [0.5-0.5]

Finishing Order of the boards: 1, 2, 3, 4, 5, 6

### Board 1, Tyros-Baker

Allsbrook, Scott (2111) –  
Nguyen, Tam (2207)

[A06]

*TN=comments by Tam Nguyen*

White arrived 45 minutes late

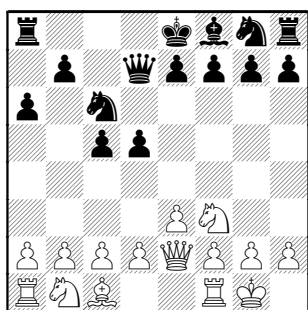
1.Nf3 c5 2.e3 d5 3.Bb5+

TN: the Bogo-Indian Reversed is not  
known to be aggressive.

3...Bd7 4.Qe2 a6

TN: Since the white's queen will always  
be aiming at b5, why not stop its path?

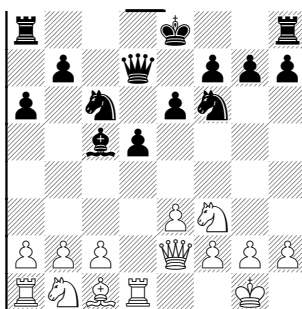
5.Bxd7+ Qxd7 6.0-0 Nc6



7.d4 e6 8.dxc5 [TN: loses a tempo]  
8...Bxc5 Black has a dream Queen's  
Gambit position (reversed, of course),

and a tempo up in development.

9.Rd1 Nf6



TN: I do not see anything wrong with  
black's position

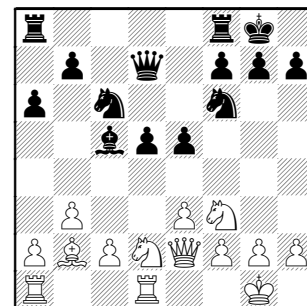
10.Nbd2 [TN: slow and awkward]

10.c4 and 10.b3 both threaten some  
activity

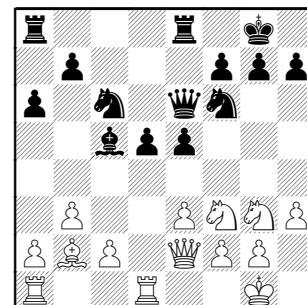
10...0-0 11.b3

TN: 11.a3 with idea of b4 is worth a try

11...e5 TN: Black has to be better here  
since all of his pieces are ideally placed  
to support a big pawn center. --Yup DS  
gives Black about a Pawn's worth.  
12.Bb2



12...Qf5 [12...Rfe8] 13.Nf1 Rfe8 14.Ng3  
Qg4 [TN: provoking h3 so that Ng3 is  
not well supported] 15.h3 Qe6



16.Rac1

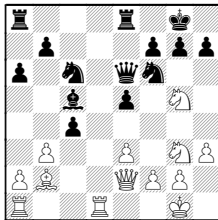
DS isn't thrilled with Black's Queen  
moves and informs that White has taken  
over. It is especially impressed with



When you arrive with half your time gone, you need to play efficiently ! Scott Allsbrook shows excellent technique by recording moves with one hand while feeding the brain with the other.

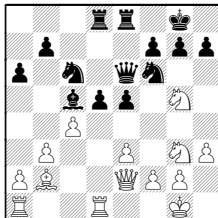
16.c4 Rad8

(16...dxc4 17.Ng5



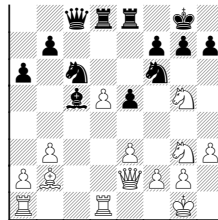
17...Qe7 18.Qxc4)

17.Ng5



**A)** 17...Qe7 18.cxd5

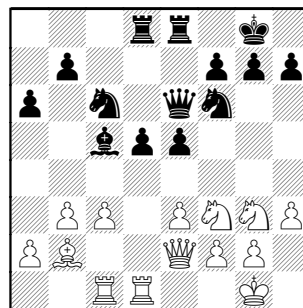
**B)** Not 17...Qc8? 18.cxd5



18...Ne7

(nor 18...Nxd5 19.Qh5 weaknesses at f7 and h7)

16...Rad8 17.c3

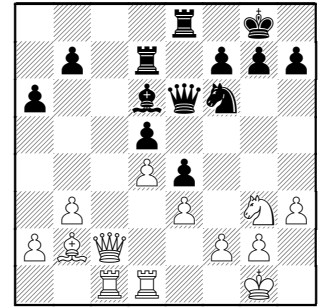


consistently defensive 17...Rd7

I first suggested 17...e4 immediately,

"the game move doesn't add to the attack"... but watch what Black's follow-ups are !

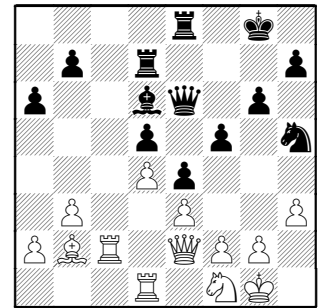
18.Qc2 e4 19.Nd4 Nxd4 20.cxd4 Bd6



21.Nf1 [TN: White cannot contest the b8-h2 diagonal by white]

21.Qe2 idea Nh5, transposes to game after 21...g6

21...Nh5 22.Qe2 g6 23.Rc2 f5



Black's plan behind moving his Rook, six moves back, is now revealed.

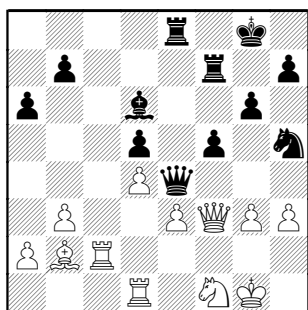
**24.f4**

TN: creating numerous weaknesses but waiting for black to push f4 can not be very pleasant either

**A)** 24.Rdc1

**B)** DS loves 24.Nh2 I guess the idea is to jump to g4 if/when f5-f4 is played.

24...exf3 25.Qxf3 Rf7 26.g3 Qe4

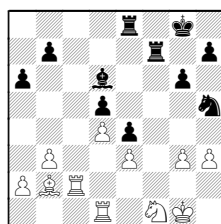


Both sides now have about 20 minutes to make move 45. Black gives away most of his advantage in this one move, if White trades it away.

**27.Qg2**

TN: **A)** 27.Rf2 Rc7 takes the c-file

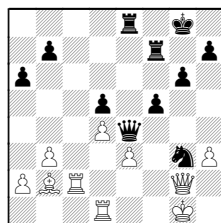
TN: **B)** A better try is 27.Qxe4 fxe4



28.g4 Ng7 (28...Ng3)

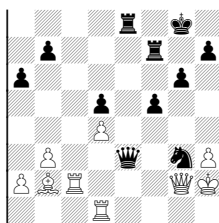
**27...Bxg3! 28.Rdc1**

Deep Shredder prefers 28.Nxg3  
28...Nxg3

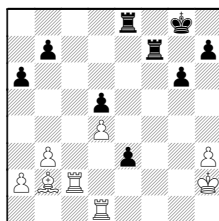


But he shows that 'no good' is  
28...Qxe3+? 29.Kh2 Nxg3

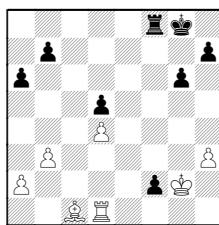
(diagram follows)



30.Qxg3 f4 31.Qxe3 fxe3



32.Kg2 (32.Re1 Rf2+) 32...Ref8 (32...e2 33.Re1) 33.Bc1 Rf2+ 34.Rxf2 exf2

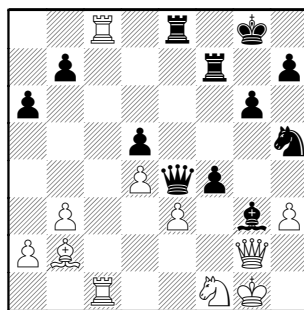


35.Rf1)

After his 28<sup>th</sup> pair, DS gives alternatives:

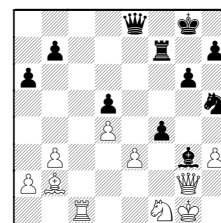
- A)** 29.Kh2 Nh5
- B)** 29.Qxg3 Qxc2;
- C)** 29.Re1 f4;
- D)** 29.Qxe4 fxe4

**28...f4 29.Rc8** idea Qxe4 !



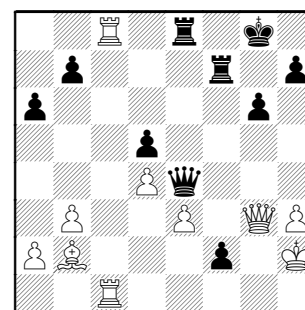
**29...f3**

29...Qe6 30.Rxe8+ Qxe8



31.exf4 Nxf4 idea Ne2+ or Nxg2

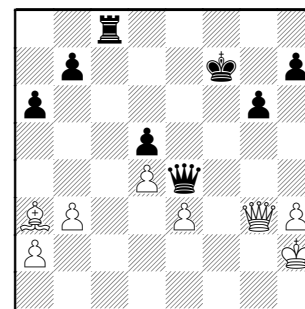
**30.Nxg3 Nxg3 31.Qxg3 f2+ 32.Kh2**



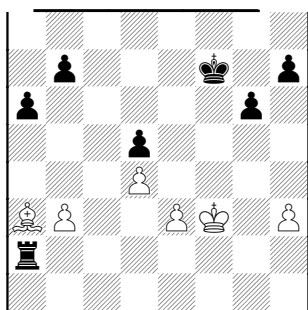
**32...f1Q**

TN: Somewhat stronger is 32...Rxc8  
33.Rxc8+ Kg7

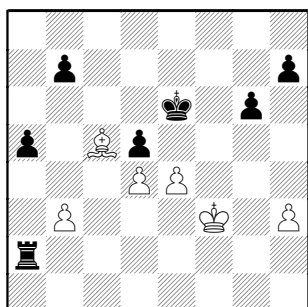
**33.Rxf1 Rxc8 34.Rxf7 Kxf7 35.Ba3**



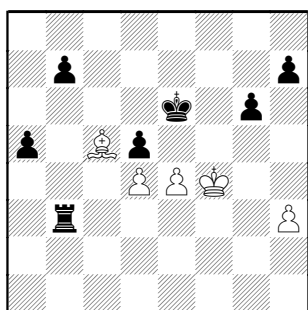
**35...Qc2+ [35...Rc3] 36.Qg2 forced**  
**36...Qxg2+ 37.Kxg2 Rc2+ 38.Kf3 Rxa2**



Not a whole lot of reasons for White to play on. **39.Bd6 a5 40.e4 Ke6 41.Bc5**

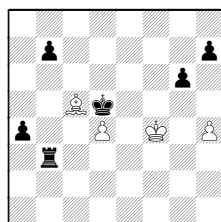


**41...Rb2** [A running passer forms after 41...b5] **42.Kf4 Rxb3**



**43.exd5+ Kxd5 44.h4 b6**

**44...a4**



seems simple enough- should get the resignation. Forcing the Bishop to sac for

the passer, the b-passer comes through. White's only hope is his h-Pawn, which Black can simply capture with his Rook.

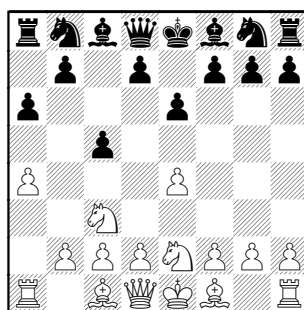
**45.Be7 Kxd4 46.Kg5 Ke5 47.Kh6 Kf5 48.Kxh7 a4 49.Kh6 a3 50.h5 gxh5 51.Kxh5 Rh3+ 52.Bh4 Rh2+ 53.Kh6 Rxh4+ 54.Kg7 Ke6 55.Kg6 Rg4+ 56.Kh5 Kf5 57.Kh6 Kf6 58.Kh7 a2 59.Kh8 Kf7 60.Kh7 Rh4# 0-1**

## Board 2, Baker-Tyros

Raso,Paul (2081) –  
Diaz,Pablo (2085)

[B23]

**1.e4 c5 2.Nc3 e6 3.Nge2 a6 4.a4**



**4...b6 [4...Nc6] 5.g3 Bb7 6.Bg2 Be7 7.0-0 Nc6 8.f4 d6**

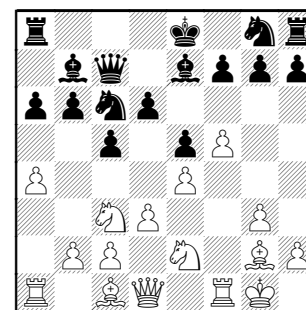
**8...Nh6** idea f5 or Ng4 starts counterattack (although Black doesn't have the a7-g1 diagonal in standard lines) Note **9.e5** isn't a problem because Black can simply play **9...d5** (or **9...Nf5**) ]

**9.d3 Qc7**

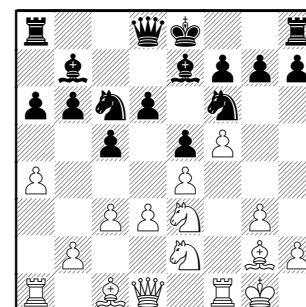
In my experience, Black often wishes to trade White's dark-squared Bishop via **Be7-g5**- the Queen is required on d8 to do that.

Black could dodge the game line with **9...Nf6 10.f5 e5**

**10.f5 e5**



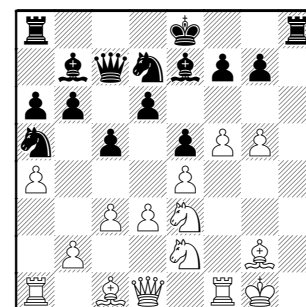
**11.Nd5** Another issue with that Queen move **11...Qd8 12.c3 Nf6 13.Ne3**



**13...Qc7**

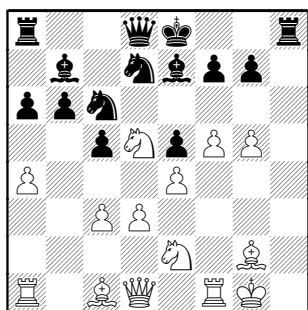
**13...h5** holds back any Kingside expansion. One of the advantages of Black's system is he has no need to castle and so play on the wing is always an option.

**14.g4 h6 15.h4 Na5 16.g5 hxg5 17.hxg5 Nd7**



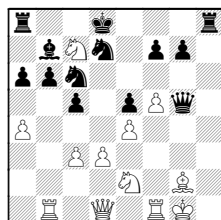
**18.b4 Nc6 19.Nd5** again ! Yet Black isn't all that worse

**19...Qd8 20.bxc5 dxc5**

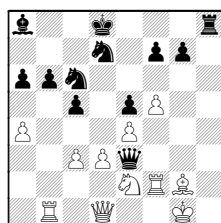


**21.Rb1 Na5**

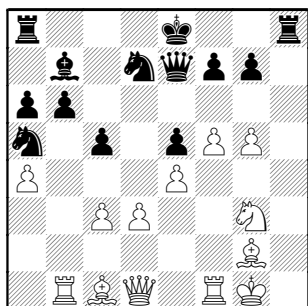
DS suggests an exchange sac to kill most of White's play: 21...Bxg5 22.Bxg5 Qxg5 23.Nc7+ Kd8



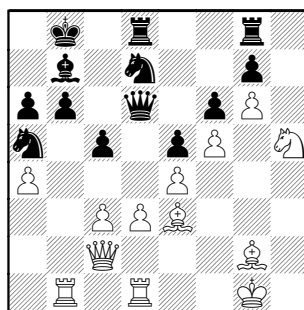
24.Nxa8 Qe3+ 25.Rf2 Bxa8



**22.Nxe7 Qxe7 23.Ng3**



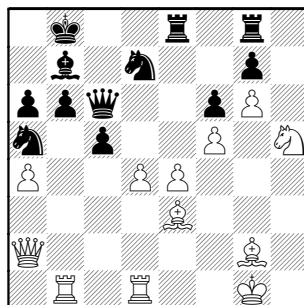
Both sides have possibilities **23...f6** [23...0-0-0] **24.g6 Qd6** allows Pg7 to be attacked **25.Nh5 Rg8** [25...Qe7] **26.Be3 0-0-0 27.Qc2 Kb8 28.Rfd1**



**28...Qc6** [28...Qe7 threatens Rh8]  
**29.Qa2** Invasion ! White takes over.  
**29...Rde8**

29...Qc7 30.Qf7 Rdf8

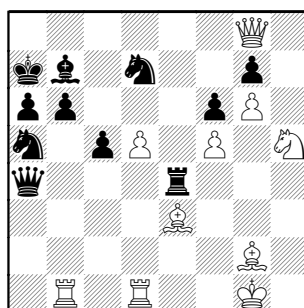
**30.d4 exd4 31.cxd4**



**31...Rxe4?** drops both Rooks **32.Qxg8+ Ka7 33.d5?**

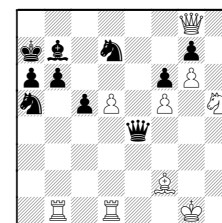
33.Ng3 pin & win !

**33...Qxa4**



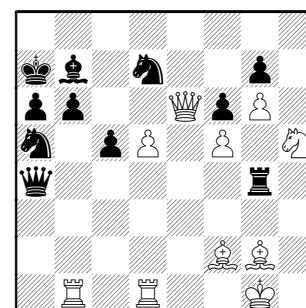
**34.Bf2**

34.Bxe4 Qxe4 exposes the King and White's minors are scattered 35.Bf2



35...Qxf5 (35...Qg4+ 36.Ng3)

**34...Rg4 35.Qe6**

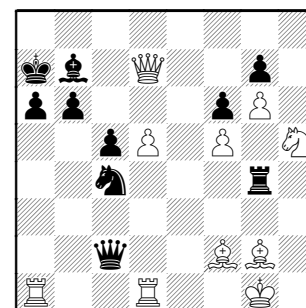


Black's busted

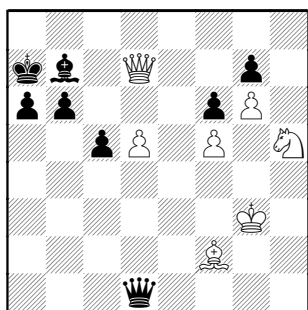
**35...Nc4**

35...Ne5 36.Qxb6+ undermines c5, and mates in a few

**36.Ra1 Qc2 37.Qxd7**



**37...Rxg2+ 38.Kxg2 Ne3+ 39.Kg3 Nxd1 40.Rxd1 Qxd1**

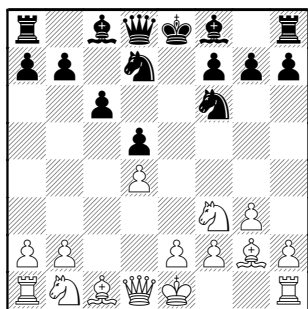


41.Nf4 Qh1 42.Qxg7 Qa1 43.Qe7 Qe5  
44.Qxe5 fxe5 45.Ne6 1-0

### Board 3, Tyros-Baker

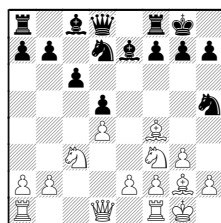
Stoltz, Bob (1922) – Freidel, Jesse (1992) [E01]

1.d4 Nf6 2.Nf3 d5 3.c4 e6 4.g3 Nbd7  
[4...Be7; 4...c5] 5.Bg2 c6 [5...dxc4;  
5...b6] 6.cxd5 [6.0-0; 6.Qc2] 6...exd5



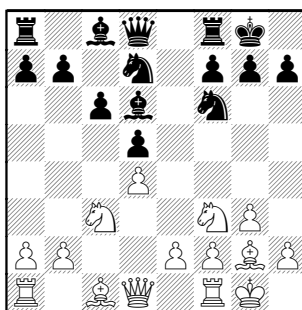
7.0-0

7.Bf4 Be7 8.0-0 0-0 9.Nc3 Nh5



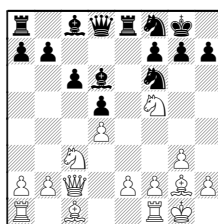
10.Rb1 Nxf4 11.gxf4

7...Bd6 8.Nc3 0-0



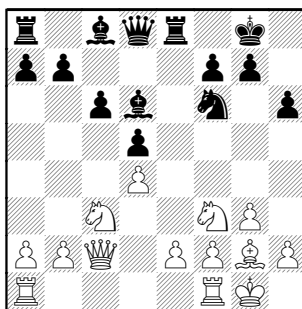
9.Bg5

9.Qc2 Re8 10.Nh4 Nf8 11.Nf5

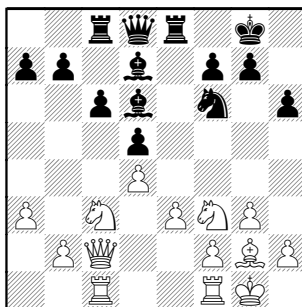


11...Bb4

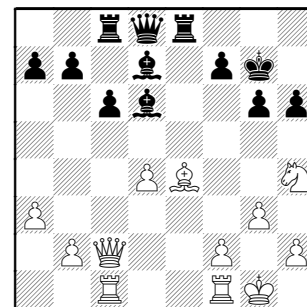
9...h6 10.Bxf6 [10.Bf4 idea Ne5]  
10...Nxf6 11.Qc2 Re8



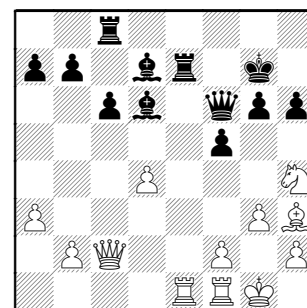
12.Rac1 [12.Nh4; 12.Rfe1] 12...Bd7  
[12...Bg4] 13.a3 Rc8 14.e3



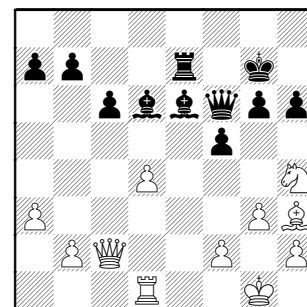
14...g6 [14...Qe7; 14...Bg4] 15.Nh4 Kg7  
16.e4 [16.Na4; 16.b4] 16...dxe4 17.Nxe4  
Nxe4 18.Bxe4



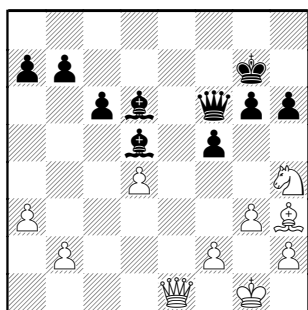
18...f5 [18...Qf6; 18...Bf4] 19.Bg2 Qf6  
20.Bh3 Re7 21.Rce1



21...Rce8 22.Rxe7+ Rxe7 23.Rd1 Be6

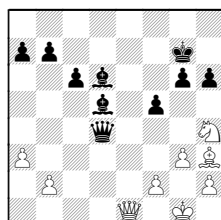


24.Re1 Bd5 25.Qd2 Rxe1+ 26.Qxe1



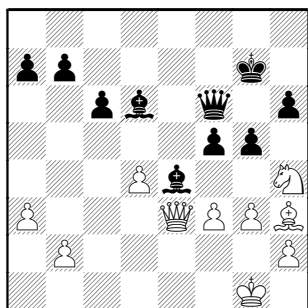
**26...Be4** All I understand about this game so far is that Black is maintaining a Pawn advantage and his Bishop pair is very active.

26...Qxd4



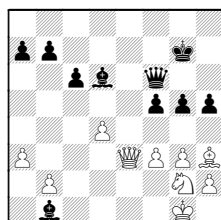
27.Bxf5 Qxb2 (27...gxf5?? 28.Nxf5+)

**27.Qe3 g5 28.f3**



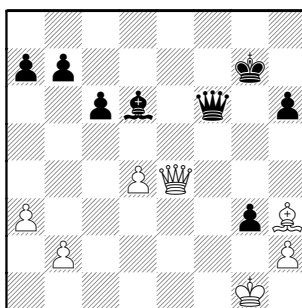
**28...gxh4**

28...Bb1 29.Ng2 h5



idea g4, trapping Bh3 30.Ne1

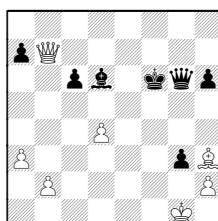
**29.fxe4 fxe4 30.Qxe4 hxg3**



**31.Qg4+ Qg6 32.Qd7+ Qf7** trading to a drawn opposite Bishop ending

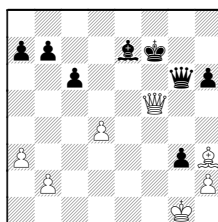
He might have explored with:  
32...Kf8 33.Qc8+ Kf7 34.Qd7+

(34.Qxb7+ Kf6



Black wins)

34...Be7 35.Qf5+?

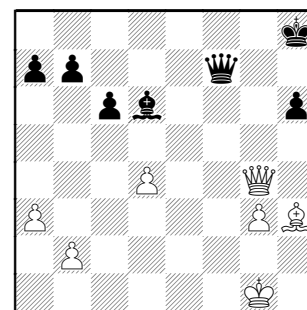


This opposite Bishop ending is probably winning for Black! He has the required potential passers on opposite sides of the board.

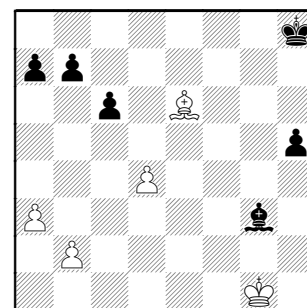
35...Qxf5 36.Bxf5 Bf6

**33.Qg4+**  
[33.Qxd6?? Qf2+ 34.Kh1 Qxh2#]

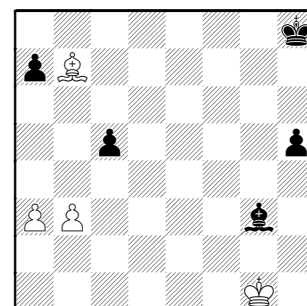
**33...Kh8 34.hxg3**



**34...h5 35.Qe6 Qxe6 36.Bxe6 Bxg3**



**37.Bc8 b6 38.Bb7 c5 39.dxc5 bxc5 40.b3**



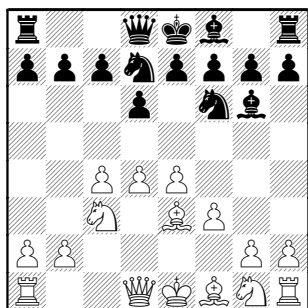
**40...Kg7 41.Bd5 Kf6 42.a4 Ke5 43.Bc4 h4 44.Kg2 a5 45.Bg8 1/2-1/2**



## Board 4, Baker-Tyros

Freidel, Paul (1965) –  
Guio, Julian (1840)

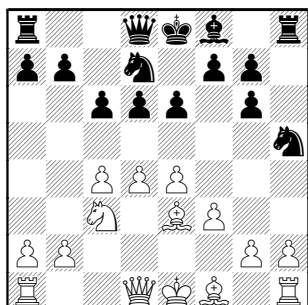
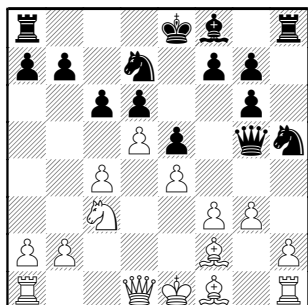
[A53]

1.d4 Nf6 2.c4 d6 3.Nc3 Bf5 4.f3 Bg6  
5.e4 Nbd7 6.Be3

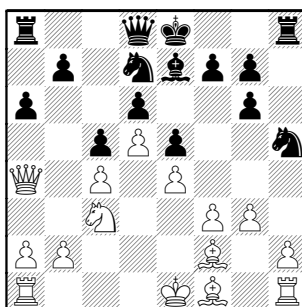
6...e6

6...e5 7.Nge2 Be7 8.Qd2 c6

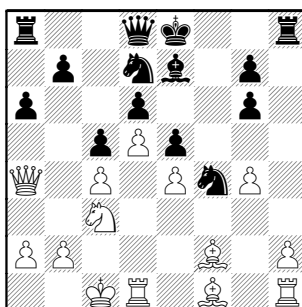
7.Nge2 c6 8.Nf4 Nh5 9.Nxg6 hxg6

idea Ng3 10.Bf2 Qg5 11.g3 [11.g4;  
11.h4] 11...e5 12.d512...c5 This helps White's normal King's  
Indian play, loosening b5 and bringing a  
Pawn where b2-b4 will attack. Black  
does have some pressure on the otherside of the board, so I was very  
interested in White's defense.12...Be7 13.dxc6 bxc6 gives Black  
possibilities up the b-file

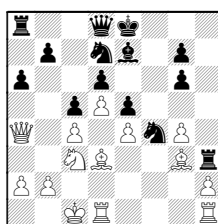
13.Qa4 a6 14.Nb5 Qd8 15.Nc3 Be7



16.0-0-0 f5 17.g4 fxg4 18.fxg4 Nf4

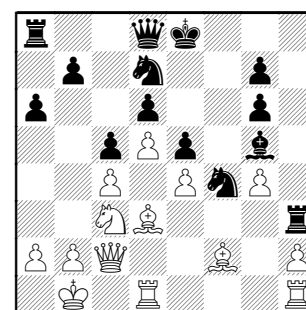
Very interesting - Black has a wonderful  
outpost, but it's not obvious how it helps.  
If I was White, I'd place my King in the  
corner and prepare b2-b4.19.Bd3 This frees h3 and g2 for  
invasion. [19.Kb1; 19.Be1 idea  
Ne2, Ba5/b4] 19...Rh3 20.Qc2

20.Bg3



20...Bg5 (20...Bh4? 21.Bf1)

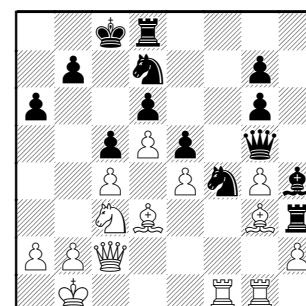
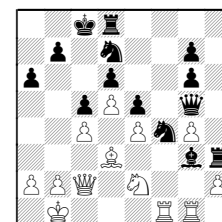
20...Bg5 21.Kb1



21...Qf6 [21...Nf6] 22.Bg3

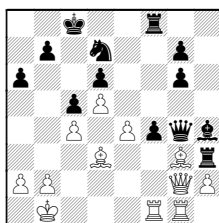
22.Bf1 Rh8 (22...Rf3 23.h4 idea g5)

22...0-0-0 23.Rdf1 Bh4 24.Rhg1 Qg5

Black has completely equalized 25.Ne2  
[25.Nd1 idea Nf2] 25...Rf8Black could go up a Pawn, but his  
doubled g-Pawns would only be useful in  
an ending. 25...Bxg326.Nxg3 (26.hxg3 Nxd3 27.Qxd3 Qxg4)  
26...Rdh8

26.Rf3

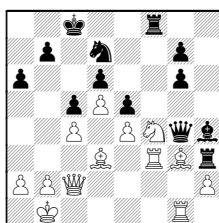
DS spots trouble for Black with 26.Nxf4  
exf4 27.Qg2 hitting loose Rook  
27...Qxg4



28.Be2

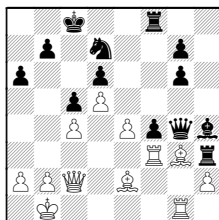
26...Nxe2

26...Qxg4 27.Nxf4



A) 27...Rxf4 since Rg1 hangs 28.Re3 (28.Bf2 Qxf3)

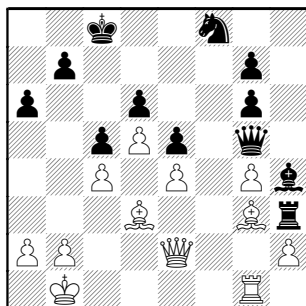
B) 27...exf4 28.Be2



28...fxg3?? 29.Rxf8+ Nxf8 30.Bxg4+;

C) 27...Qxf3 28.Nxh3

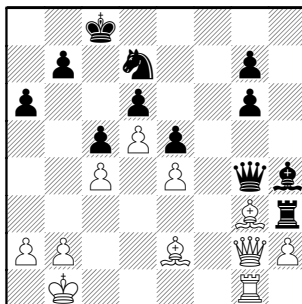
27.Rxf8+ Nxf8 28.Qxe2



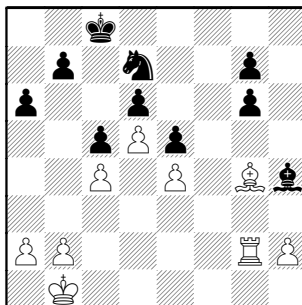
28...Nd7?

28...Bxg3 is even, giving the Rook an escape

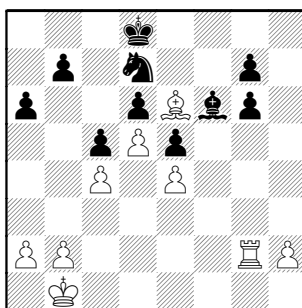
29.Qg2 Qxg4 30.Be2



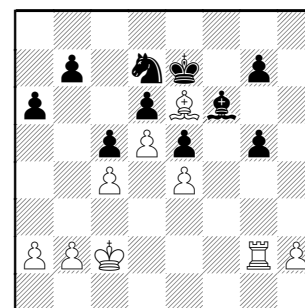
30...Rxc3 31.Bxg4 Rxc2 32.Rxc2



32...Bf6 The Bishop certainly has no targets, so tries to hold the invasion points along the g-file. [32...b5; 32...Kd8] 33.Be6 Kd8



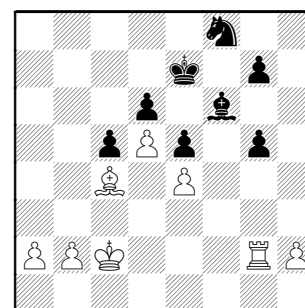
34.Bf7 [34.Rxc6 Nf8] 34...g5 35.Kc2 Ke7 36.Be6



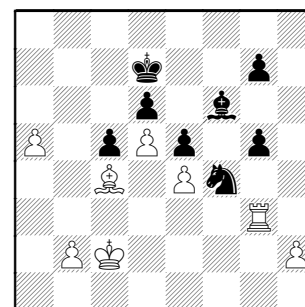
36...Nf8 oops

36...b5 37.cxb5 axb5 38.b3 and a2-a4 makes a passer 38...b4

37.Bc8 b5 38.Bxa6 bxc4 39.Bxc4



39...Ng6 40.a4 Nf4 41.Rg3 Kd7 42.a5



42...Kc7

The King doesn't get in the way after 42...Kc8 43.Rb3 Bd8 44.a6 still queens

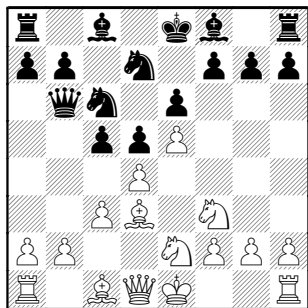
43.Rb3 Bd8 44.a6 Kc8 45.a7 1-0

## Board 5, Tyros-Baker

Dobrovolny, Chuck (1752) -  
Alberts, Wally (1528)

[C06]

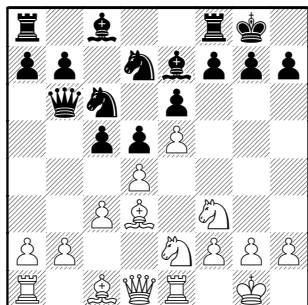
1.e4 e6 2.d4 d5 3.Nd2 Nf6 4.e5 Nfd7  
5.Bd3 c5 6.c3 Nc6 7.Ne2 Qb6 8.Nf3



8...Be7

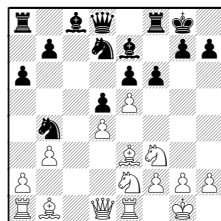
8...cxd4 is the most popular book move

9.0-0 0-0 [9...f6; 9...a5] 10.Re1



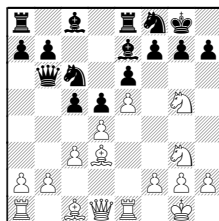
[10.a3; 10.Ng3] 10...f6

A) 10...cxd4 11.cxd4 a6 12.b3 Nb4  
13.Bb1 Qd8 14.Be3 f6



Kovalenko-Podgaetsky, 2002

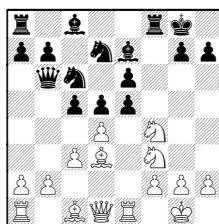
B) 10...Re8 11.Ng3 Nf8 12.Ng5



Tonel-Arnetta, 2007

11.exf6

11.Nf4 fxe5

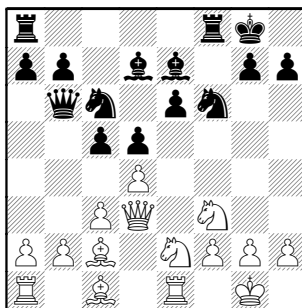


12.dxe5

(12.Nxe6 e4 13.Nxf8 Bxf8 wins two  
pieces for Rook and Pawn)

12...c4 13.Bc2 Nc5

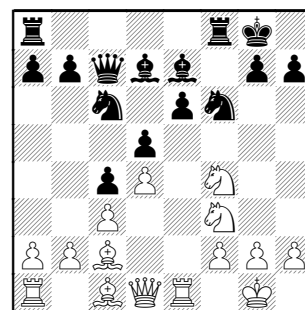
11...Nxf6 12.Bc2 [12.Nf4] 12...Bd7  
[12...Bd6 idea e5] 13.Qd3



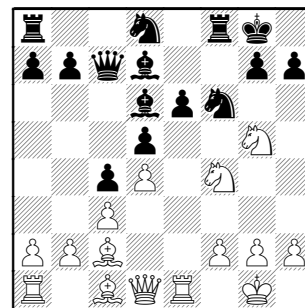
13...c4 This should stifle his own  
counterplay.

13...cxd4 14.Nexd4 Nxd4 15.Nxd4 Bc5  
(15...Rac8) 16.b4

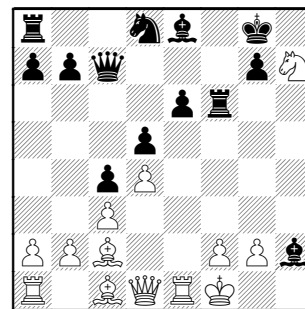
14.Qd1 Qc7 15.Nf4



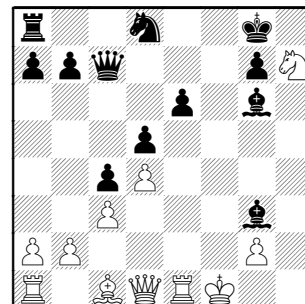
15...Nd8 16.Ng5 Bd6



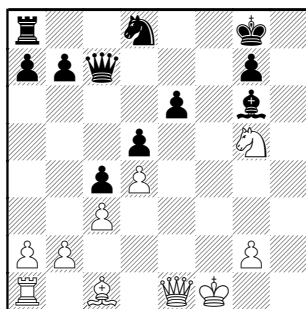
17.Nh5 [17.g3 maintains the attack  
against e6] 17...Be8 [17...Bxh2+ 18.Kf1  
g6] 18.Nxf6+ Rxf6 19.Nxh7 Bxh2+  
20.Kf1



20...Rf7 21.Bg6?! Rxf2+ 22.Kxf2 Bg3+  
23.Kf1 Bxg6



24.Ng5 Bxe1 25.Qxe1

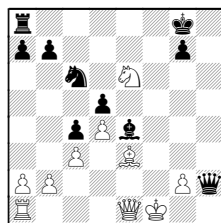


25...Qh2 26.Be3

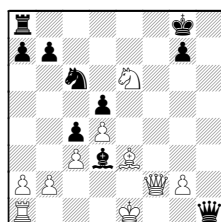
26.Nxe6? Qh1+ 27.Kf2 Qxe1+ 28.Kxe1 Nxe6

26...Bf5

DS finds a kill with some forcing moves:  
26...Nc6! 27.Nxe6 Be4 with mate at g2



28.Qf2 what else to stop it ?? Bd3+  
29.Ke1 Qh1+

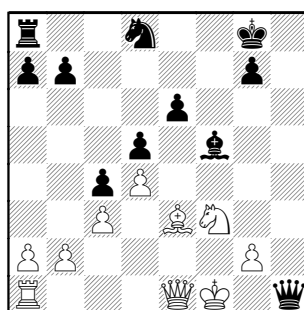


30.Kd2

(30.Qg1 Qxg1+ 31.Bxg1 Re8)

30...Qxa1

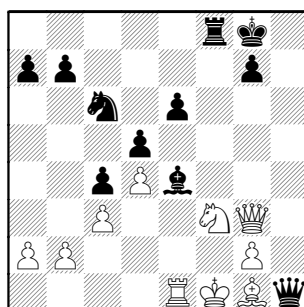
27.Nf3 Qh1+



28.Bg1 [28.Kf2 keeps Black's play to a minimum] 28...Nc6 [28...Be4] 29.Qg3 Rf8 [29...Qh6] 30.Re1

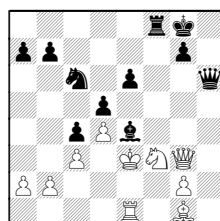
Again, the pressure is lessened with Queens off. 30.Qh2 In any such ending, the extra Pawn is hard to realize as it's the backward e-Pawn.

30...Be4



31.Kf2 [31.Ke2 runs away from the pin] 31...Qh5 32.Ke2

32.Ke3 Qh6+

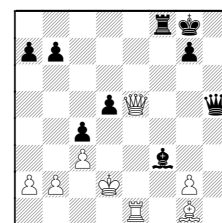


33.Ke2 (33.Qg5?? Rxf3+) 33...Qh5 34.Be3 (34.Rf1? Bd3+)

32...e5 taking advantage of the pinned Knight 33.Be3

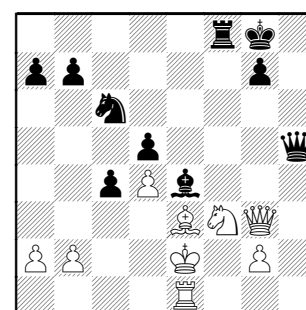
Less chances are found in 33.dxe5

33...Nxe5 (33...Bxf3+) 34.Qxe5 Bxf3+ 35.Kd2



35...Qxe5 36.Rxe5

33...exd4 34.cxd4

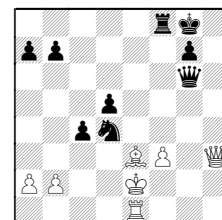


34...Qg6 [34...Nb4] 35.Qh3

35.Qxg6 may be OK for Black here since the Pawn formation has changed. The extra Pawn is now the strong, advanced c-Pawn.

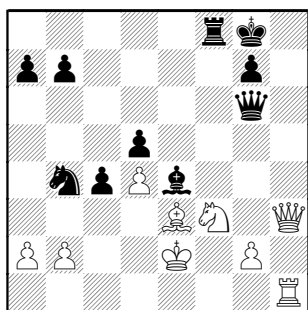
35...Nb4

Black can win a second Pawn  
35...Bxf3+! 36.gxf3 Nxd4+

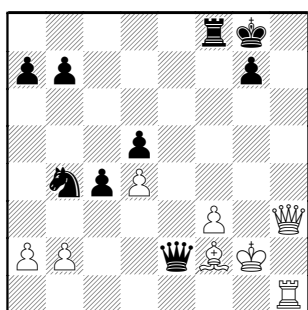


37.Bxd4 Qd3+

36.Rh1



The rest tastes like time trouble  
**36...Bxf3+ 37.gxf3 Qc2+ 38.Kf1 Qd1+ 39.Kg2 Qe2+ 40.Bf2**



**40...Rf6**

40...Nd3 idea Nf4+ forking or Qxf2+  
 41.Qh7+ Kf7 42.Qf5+ Ke7 (idea Qxf2+ or Rxf5) 43.Qg5+ Kd6

(43...Ke8? 44.Qg3 Nf4+ 45.Kg1 Qd1+)

**41.Qc8+ Kf7 42.Rh8** White needs a perpetual

42.Qxb7+ looks drawish

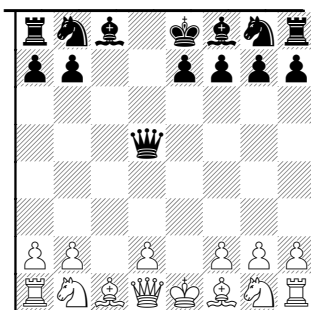
**42...Qxf3+ 0-1**

## Board 6, Baker-Tyros

Janssen, Gary (1503) –  
 Hahne, Dave (1625)

[D40]

1.e4 c6 2.c4 d5 3.cxd5 cxd5 4.exd5 Qxd5

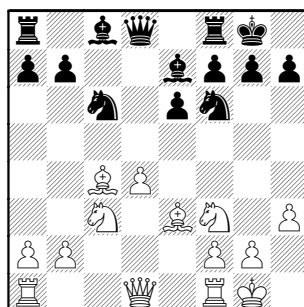


Another early Queen to the center  
 [4...Nf6] **5.Nc3 Qd8** [5...Qa5 and play as in the Scandinavian] **6.Nf3 Nf6 7.Bc4 Nc6 8.h3**

**A) 8.d4 Bg4** targets the isolate  
 (8...e6 9.0-0 Be7 is similar to the game  
9.Be3)

**B) 8.0-0**

**8...e6 9.0-0 Be7 10.d4 0-0 11.Be3**



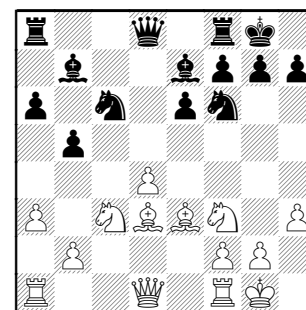
**11...a6**

11...Nb4 idea Nbd5, is a standard way of playing against the IQP. Nimzowitsch taught "blockade, attack it, win it"

**12.a3 b5 13.Bd3**

13.Ba2 is the strategic placement, keeping d5 under attack to support d4-d5 break, looking at e6 and f7, and also planning Qd3 (Qc2) followed by Rad1, Bb1 for attack.

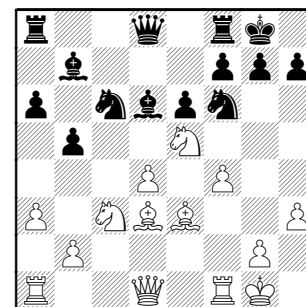
**13...Bb7**



**14.Ne5**

Using the IQP to advantage. The classic balance is, yes, it can be attacked, but, yes, it supports the pieces in the center. A Knight trade would open the d-file, so maybe White should prepare to own it before offering to open it.

**14...Bd6 15.f4**



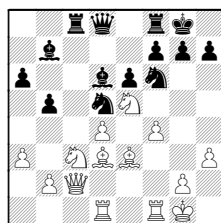
**15...Ne7**

15...Bc7 maintains a look at the isolate. Note Black is not yet threatening to win it due to the Bxh7+ discovery theme.

**16.Ng4** Why trade off your best piece, especially after spending several moves to its base at e5 ?

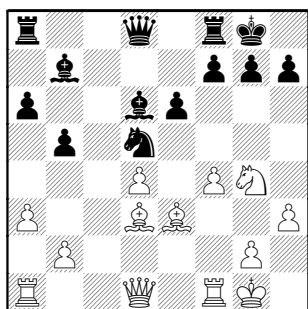
I always get tangled with 16.Qc2 idea Ne4 trades the same defender while maintaining the e5 outpost.

16...Rc8 (16...Ned5) 17.Rad1 idea Qb1 and Ne4-g5 17...Ned5



and Black gets good counterplay. This line demonstrates why I think it best to get the Queen's Rook active before taking on the game line beginning with Nf3-e5.

**16...Ned5 17.Nxd5 Nxd5**



threat is f5 (or h5) followed by Nxe3

**18.Qd2**

18.Bd2 allows play against the isolate with 18...Qb6;

18.Qf3 is also possible

**18...Rc8**

18...Bb8 idea Ba7 is a way to keep harping on that IQP, again, ala Nimzowitsch. Here it would also start harassing the dark squares made with the earlier f2-f4 move.

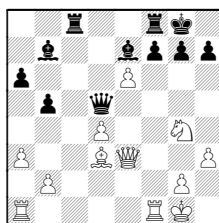
**19.f5 exf5**

19...Nxe3 would gain the Bishop pair, but how would Black defend his King ?

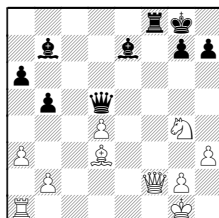
20.Qxe3 Be7

(20...Bd5 21.f6! illustrates the comment)

21.fxe6 Qd5

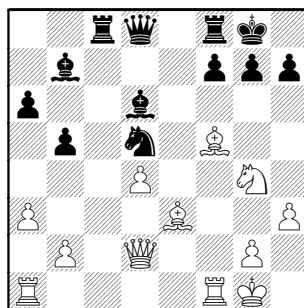


22.exf7+ Rxf7 23.Rf2 (23.Qg3 Qxd4+)  
23...Rxf2 24.Qxf2 (24.Nxf2?? Qxg2#)  
24...Rf8

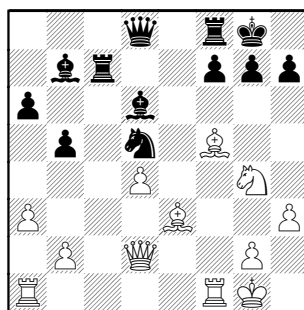


Great play for Black's Pawn !  
25.Qe2 Qxd4+

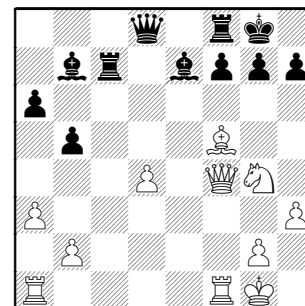
**20.Bxf5**



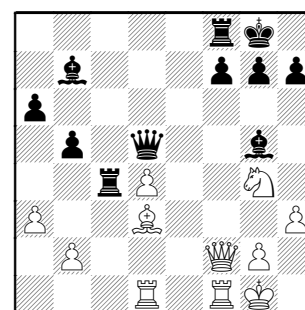
**20...Rc4 21.Bd3 Rc8 22.Bf5 Rc7**



**23.Bg5 Be7** [23...f6 doesn't seem too weakening, also stopping Ng4-e5]  
**24.Bf4 Nxf4 25.Qxf4**



**25...Rc4 26.Rad1 Bg5 27.Qf2 Qd5 28.Bd3**

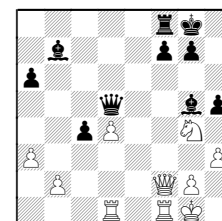


**28...Rcc8**

**A) 28...Rxd4? 29.Bxh7+ Kxh7 30.Rxd4**

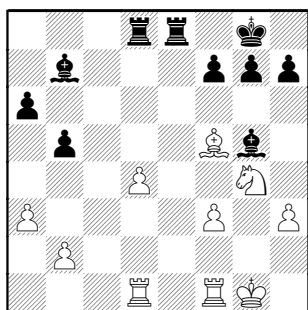
**B) DS realizes e3 is weak- with the Knight not covering it, Bg5-e3 is a kill (overloads Queen defense of g2) ...so:**

28...h5! 29.Bxc4 bxc4



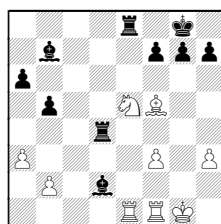
30.Qf3 (30.Ne5?? Be3)

**29.Bf5 Rcd8** [29...h5 still works here]  
**30.Qf3 Qxf3 31.gxf3 Rfe8**



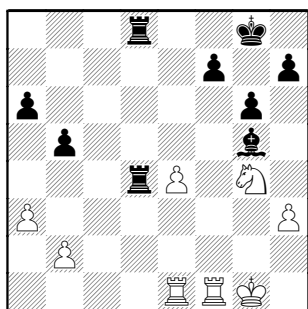
**32.Ne5 Rxd4 33.Rde1** [33.Rxd4 Be3+]  
**33...Red8**

33...Bd2



Black can annoy with 34.Re2 (34.Rd1? Rxe5) 34...f6 35.Rff2  
(35.Nc6? Rxe2 36.Nxd4 Be3+)

**34.Ng4 g6** [34...h5] **35.Be4 Bxe4**  
**36.fxe4**

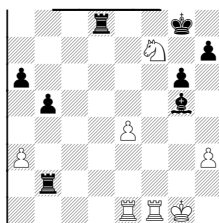


**36...Rd2 37.Ne5 f6**

37...Rxb2

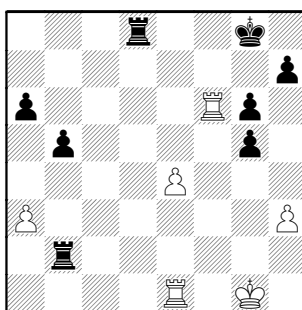
**A) 38.Rxf7 38...Rb3**

**B) 38.Nxf7?**  
( Diagram follows... )

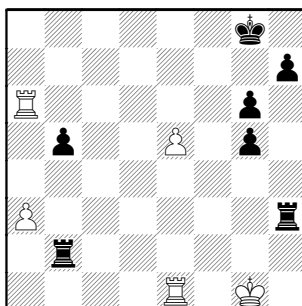


38...Rdd2

**38.Nf3 Rxb2 39.Nxg5 fxg5 40.Rf6**



**40...Rdd2** [40...Rd3] **41.Rxa6 Rg2+**  
**42.Kh1 Rh2+ 43.Kg1 Rxh3 44.e5**



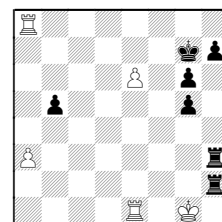
### DRAW AGREED

as match was already won by Baker.

Analysis follows (moves bold and otherwise)

Black should win this **44...Rbh2 45.Re4**

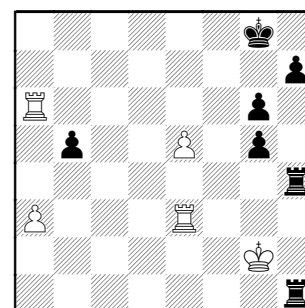
**A) 45.Ra8+ Kg7 46.e6**



46...Rh1+ 47.Kf2 Rxe1 48.Kxe1 Re3+

**B) 45.e6 Rh1+ 46.Kf2 Rxe1 47.Kxe1**  
**Re3+**

**45...Rh4 46.Re3 Rh1+** [46...R2h3  
47.Re2] **47.Kg2**



**47...R4h2+ 48.Kg3 Rh3+ 49.Kf2**  
[49.Kg2 Rxe3] **49...Rxe3 50.Kxe3 Re1+**  
**51.Kd4 g4 1/2-1/2**



# **ROUND TWO, Match 3: Motorola Kings [0-1] vs Downers Grove CC [0-1]**

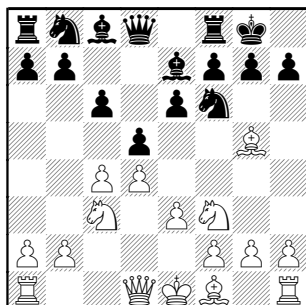
**Finishing Order of the boards: 5, 4, 1, 6, 2, 3**

## **Board 1, DGCC-Kings**

Klug, S (2192) –  
Melnikov, Igor (2024)

[D63]

1.d4 Nf6 2.c4 e6 3.Nc3 d5 4.Bg5 Be7  
5.e3 0-0 6.Nf3 c6



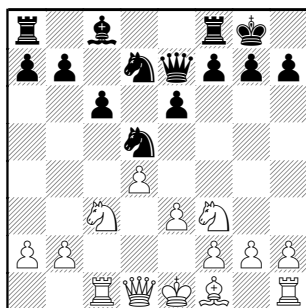
7.Rc1 Nbd7 8.cxd5 In my database,  
Black rarely wins games in this line !  
8...Nxd5

Example games continued:

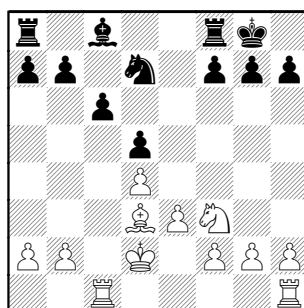
**A)** 8...exd5 9.Bd3 Re8 (9...Ne4)

**B)** 8...cxd5 9.Bd3 h6 10.Bh4 a6 11.0-0  
b5

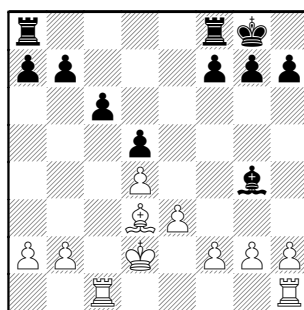
9.Bxe7 Qxe7



10.Nxd5 [10.Bd3; 10.Qb3] 10...exd5  
11.Bd3 Qb4+ [11...Nf6; 11...f5] 12.Qd2  
Qxd2+ 13.Kxd2

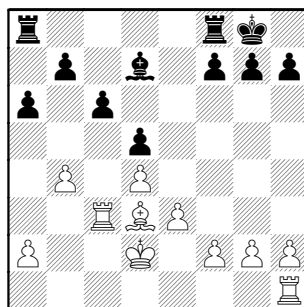


13...Nf6 14.Ne5 Ng4 15.Nxg4 Bxg4



Despite the incessant bent toward  
trading, White has an advantage of a full  
Pawn, according to the computer.

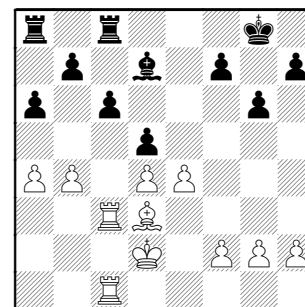
16.b4 a6 17.Rc3 Bd7



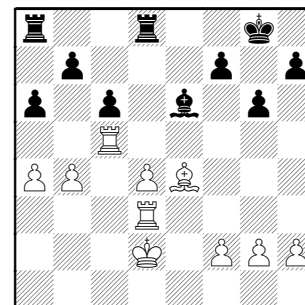
18.Rhc1

18.Rb1 with idea a4,b5 better continues  
the minority attack

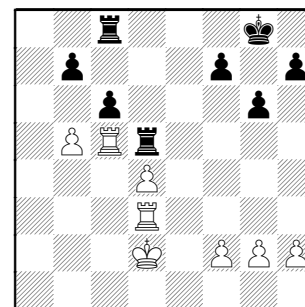
18...g6 19.a4 Rfc8 20.e4 This only  
equalizes.



20...dxe4 21.Bxe4 Rd8 [21...a5] 22.Rd3  
Be6 23.Rc5



23...Rac8 [23...Rd6 idea Rad8] 24.b5  
axb5 25.axb5 Bd5 26.Bxd5 Rxd5

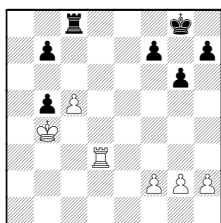


27.Rxd5

White could improve his King and try for  
a Rook ending. After 27.Kc3 he can  
favorably continue:

**A)** 27... Kf8 28.Kc4

**B)** 27...Rxc5+ 28.dxc5 cxb5 29.Kb4



with play against Pb7, while the Black King is cut out of play

27...cxd5 28.Rc3 1/2-1/2

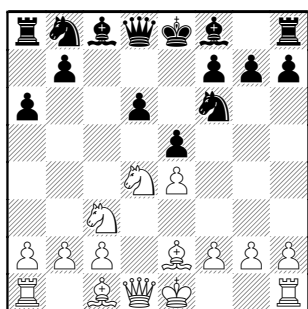
## Board 2, Kings-DGCC

Piparia, Jankesh (2000) –  
Egerton, Jim (1992)

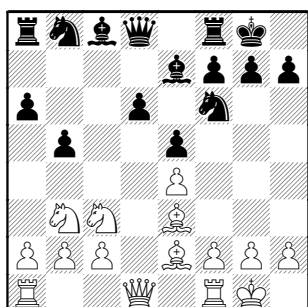
[B92]

1.e4 c5 2.Nf3 d6 3.d4 cxd4 4.Nxd4 Nf6  
5.Nc3 a6 6.Be2 e5

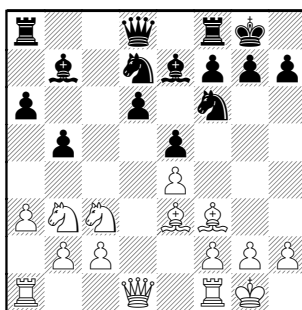
An interesting development to place his Queen's Bishop at e6, thanks to White's less aggressive counterpart.



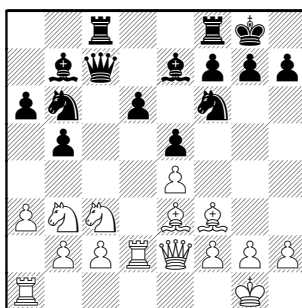
7.Nb3 Be7 8.0-0 0-0 9.Be3 b5



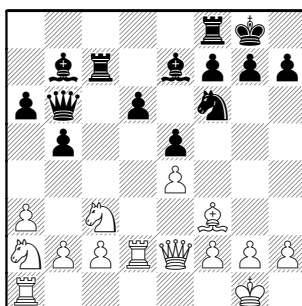
10.Bf3 [10.Nd5] 10...Bb7 11.a3 Nbd7



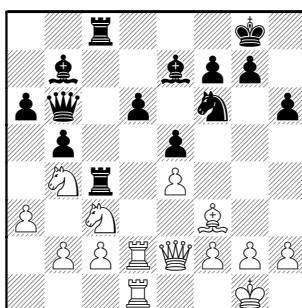
12.Qe2 Rc8 13.Rfd1 Qc7 14.Rd2 Nb6!



15.Bxb6 [15.Rd3 Nc4 16.Bc1] 15...Qxb6  
16.Nc1 Rc7 17.N1a2

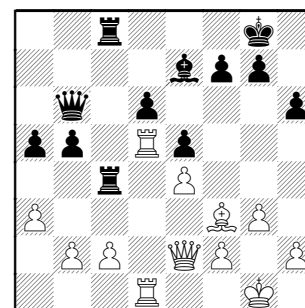


17...Rfc8 18.Rad1 Rc4 19.Nb4 h6



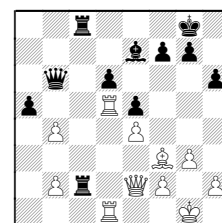
White routed his Knight to b4. The f3-Bishop doesn't help much, either

20.g3 a5 21.Nbd5 Nxd5 22.Nxd5 Bxd5  
23.Rxd5



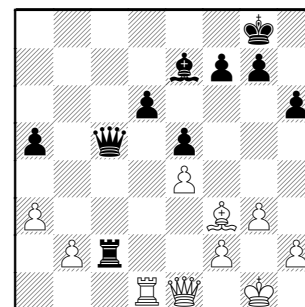
23...Rxc2

23...b4 24.axb4 Rxc2



25.bxa5 Rxe2 26.axb6 Rxb2 nets a  
Pawn for Black

24.Rxb5 Qa7 25.Qe1 R8c5 26.Rxc5  
Qxc5

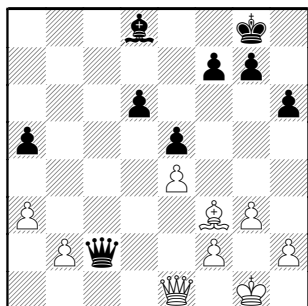


27.Rd2

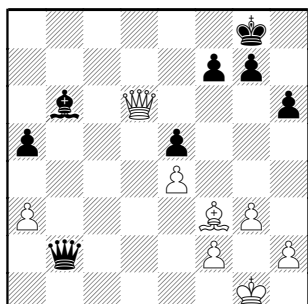
27.b4 gives White a passer, but it will  
take some work to get it moving.  
27...Qc3! but the presence of opposite  
Bishops isn't promising.

Not much to comment on so far- Black  
has had the better game ever since

27...Bd8 [27...Rc1 28.Rd1 Rc2 repeats]  
28.Rxc2 Qxc2

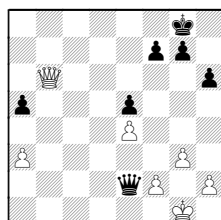


29.Qd1 Qxb2 30.Qxd6 Bb6



31.Be2 Bd4?

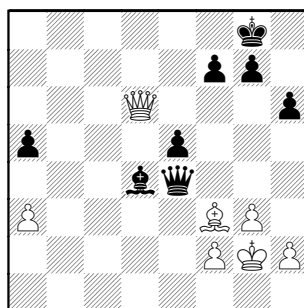
31...Qxe2 32.Qxb6



32...Qe1+ 33.Kg2 Qxe4+ Black has won  
a useful Pawn

32.Kf1? giving a second chance at the  
Pawn

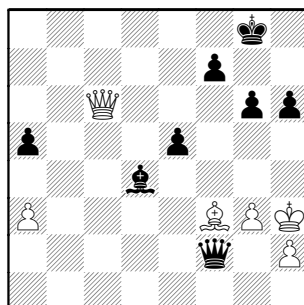
32...Qb1+ 33.Kg2 Qxe4+ 34.Bf3



34...Qe1 35.Qc6

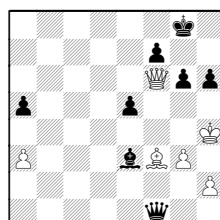
White is in big-time time trouble for the  
rest of the game—and Black soon joins  
him.

35...Qxf2+ 36.Kh3 g6



37.Qf6 Qf1+ 38.Kh4 Qf2

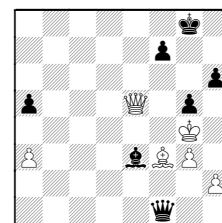
38...Be3!



39.Qd8+

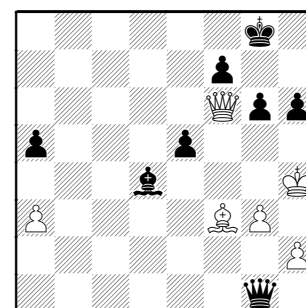
**A)** The same mate occurs from 39.Kg4  
h5+ 40.Kh4 g5+ 39...Kg7 40.Qd5  
(40.Bg4 Bg5+ wins Queen) 40...Bg5+  
41.Kg4 f5#

**B)** Another mate is 39.Qxe5 g5+ 40.Kg4



40...h5+ 41.Kxh5 Qh3#

39.Kh3 Qf1+ 40.Kh4 Qg1



*[The only scoresheet ends at this  
point]*

Not finding the exact moves to build the  
final mate (which neither side recorded in  
a mutual time scramble)... it was  
something like 40...g5+ 41.Kh5 I'm not  
remembering what stopped Kg4 here.



(41.Kg4 Be3 idea of mate as in move #38 analysis 42.Qf5) 41...Qh3# was the final position]

I do remember that the starting moves to get there were **41.Kh3 Qf1+** which would've been a 3-fold rep for a draw, but who knows when both sides are banging the clock, with about 20 seconds left!? **0-1**

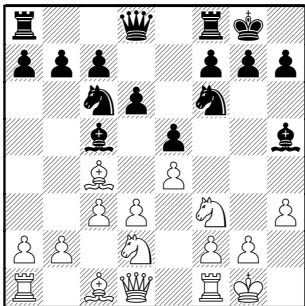
### Board 3, DGCC-Kings

(1684) Wakerly,Ralph (1781) - Wallach,Cliff (1998)

[C54]

One often-recommended way to improve your attack or tactics is to choose a complicated game and give yourself a set time to analyze it. Write down your lines, then compare with GM analysis. We don't have a spare GM to lend you, but the position at move #19 (and following) was chewed up by Deep Shredder. See how close you come !

**1.e4 e5 2.Nf3 Nc6 3.Bc4 Nf6 4.d3 Bc5 5.c3 0-0 6.0-0 d6 7.Nbd2 [7.Bb3 is also quite popular] 7...Bg4 8.h3 [8.Re1] 8...Bh5**



**9.g4** Breaking from master play-especially noteworthy as it is the source of the attack White generates. **9...Bg6**

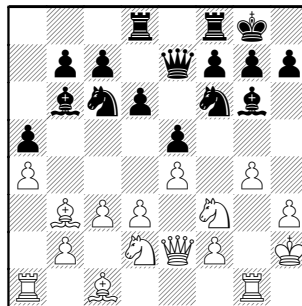
9...Nxg4 10.hxg4 Bxg4 is deemed even by DS

**10.Bb3**

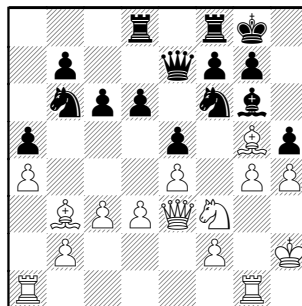
10.Nb3 Bb6 11.Bg5

**10...Bb6** [10...Re8; 10...d5] **11.Qe2** [11.Nc4] **11...Qe7 12.Kh2**

**12...a5 13.a4 Rad8 14.Rg1**

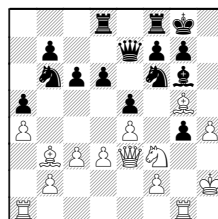


**14...Nb8 15.Nc4 Nbd7 16.Bg5 c6** [16...Rfe8; 16...Nc5] **17.h4 h5** [17...h6] **18.Nxb6 Nxb6 19.Qe3**



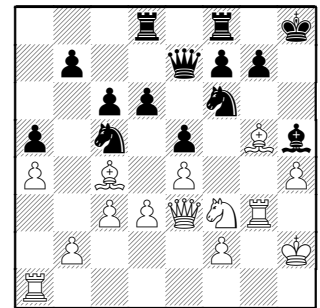
**19...Nbd7**

19...hxg4?



20.h5! Bh7 (20...Bxh5 21.Nh4) 21.Bxf6 Qxf6 22.Rxg4

**20.gxh5 Bxh5 21.Rg3 Nc5 22.Bc4 Kh8**



**23.Rag1** This is the position that attracted a mob at the post-mortem.

23.Nd2 idea f2-f4 is suggested by the computer 23...Ne6 24.Rag1

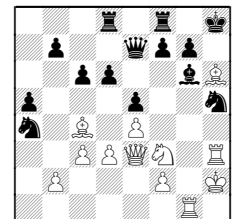
**23...Rg8**

I asked the computer to give some alternatives:

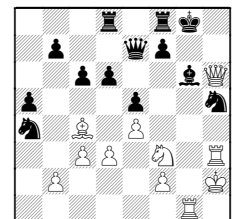
- 1) 23...Rfe8 24.Bh6
- 2) 23...Rg8 24.Bh6
- 3) 23...b5 24.axb5 cxb5 25.Bxb5
- 4) 23...d5 24.exd5 cxd5 25.Nxe5 Rfe8 26.Bh6 g6

But of course we couldn't skip getting advice on the sacrificial line:

- 5) 23...Nxa4 24.Bh6 Bg6 25.h5 Nxh5 26.Rh3



**A) 26...gxh6? 27.Qxh6+ Kg8**



**28.Rxg6+ Ng7 29.Qxg7#**

**B)** 26...Nf6 27.Bxg7+! Kxg7 28.Qh6+ Kg8 29.Qh8#

**C)** The computer suggests 26...Rg8 and I'll just dump the lines it cranked out (let it run overnight !)

Deep Shredder 10:

1) 27.Nh4 Bh7 28.Nf5 Qf6

2) 27.Bg5 Qf8 28.Bxd8 Qxd8 29.Rg5 Rf8 30.Nxe5 Qxg5 31.Nxf7+ Rxf7 32.Qxg5 Rf6 33.Qxa5 Nxb2 34.Qd8+ Kh7 35.Bg8+ Kh6 36.f4 Nxd3

3) 27.Rg5 Qf6 28.Rgxh5 Bxh5 29.Rxh5 gxh6 30.Rxh6+ Kg7 31.Rxf6 Kxf6 32.Nh4 Ke7 33.Qa7

4) 27.Rxg6

## 24.Bh6

Incidentally, all this computer work was the result of an email I recently received. The writer was sharing some work he did to see if Tal's sacrifices were correct—and to see if the machine would even consider some of his more wild ones! An interesting proposition we'll explore in a couple months !

Anywho, here's the thoughts of our silicon friend at move 24:

1) 24.Bh6 g6 25.Ng5 d5 26.exd5

2) 24.b3 b5

3) 24.Ba2 Nxa4 25.Bh6 Bg6 26.Bxf7 Bxf7 27.Bxg7+ Rxg7 28.Rxg7 Ng8 29.R1g6

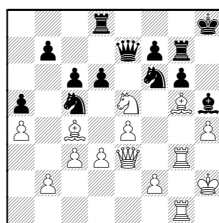
4) 24.Ra1 Ne6 25.Bxe6 fxe6 26.Nd2 Rdf8 27.Qb6 Qf7 28.Nc4 Ng4+ 29.Kg1 d5 30.Nxa5

## 24...g6 25.Bg5

As just noted 25.Ng5 was DS' preference

## 25...Rg7 26.b3

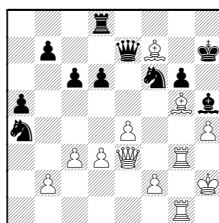
Here DS made some real fun: 26.Nxe5!



**A)** 26...Qxe5 27.f4 Qe7 28.e5

**B)** 26...dxe5 27.Bxf6 Qxf6 28.Qxc5

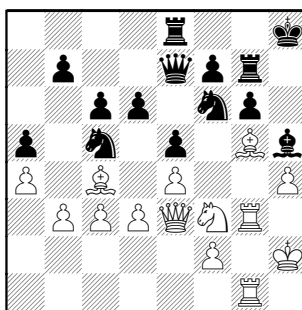
**C)** 26...Nxa4 27.Nxf7+ Rxf7 28.Bxf7 Kh7



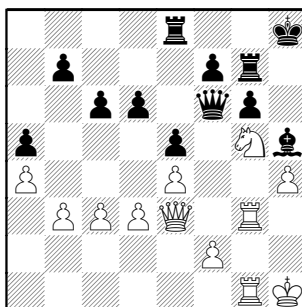
29.Bxg6+ Bxg6 30.Qd4

***You did do all that analysis ahead of time, right, so you can compare it ??***

**26...Re8** [26...Rd7]



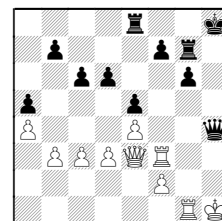
**27.Kh1** [27.R1g2 idea Kg1] **27...Ne6**  
**28.Bxe6?! Qxe6 29.Bxf6 Qxf6 30.Ng5**



White has traded away his advantage

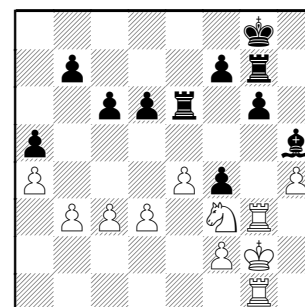
**30...Qf4 31.Nf3** [31.Rh3] **31...Re6?!**

31...Bxf3+ 32.Rxf3 Qxh4+!



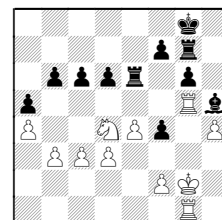
33.Rh3 Qxh3+ 34.Qxh3+ Rh7

**32.Kg2 Kg8 33.Qxf4 exf4**



**34.Rh3**

34.Rg5 b6 35.Nd4

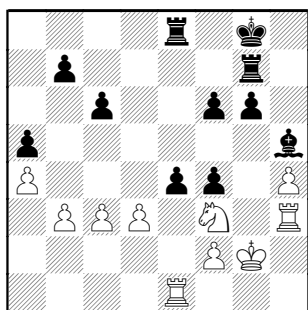


35...Re7 (35...Re8 36.Nxc6 f6 37.Rb5)  
36.Nxc6 Rc7

**34...d5** [34...c5 35.Kf1] **35.Ng5**

35.exd5 cxd5 36.Rhh1

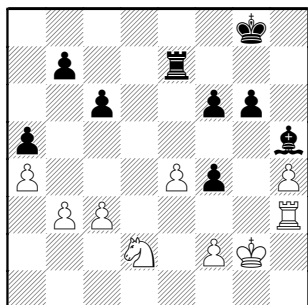
**35...Re8 36.Re1** [36.exd5 minimizes Black's possibilities] **36...f6 37.Nf3 dxe4**



**38.Rxe4** [38.dxe4 Rd8] **38...Rxe4**  
**39.dxe4 Re7**

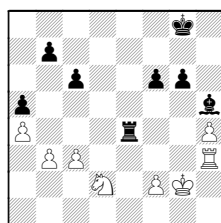
39...Rd7 keeps the Knight under wraps while still invading

**40.Nd2**



**40...f3+** [40...Rd7 41.Nc4] **41.Nxf3**  
[41.Kg3 Rd7 42.Nc4] **41...Rxe4 42.Nd4**

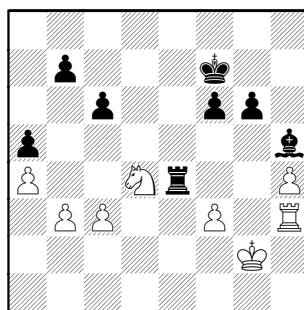
42.Nd2 idea Nc4



seems to be White's best

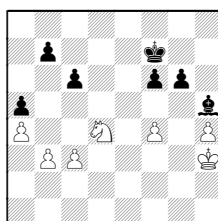
42...Rg4+ 43.Kf1 b5 44.f3

**42...Kf7 43.f3?**



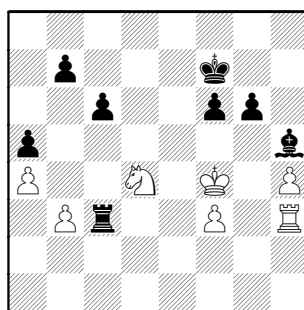
time trouble **43...Re3 44.Kg3**

44.f4 Rxh3 45.Kxh3

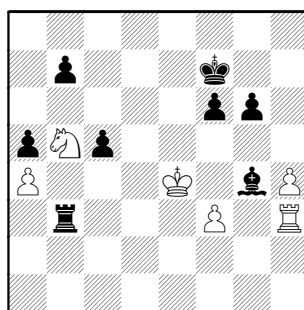


45...Bd1 idea c4-c5

**44...Rxc3 45.Kf4**



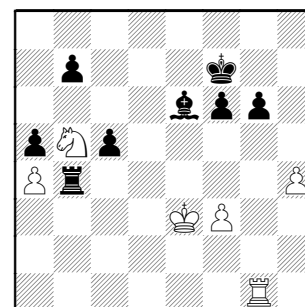
**45...c5 46.Nb5 Rxb3 47.Ke4 Bg4**



**48.Rg3**

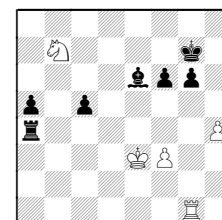
48.fxg4? Rxh3

**48...Be6 49.Rg1 Rb4+** [49...b6;  
49...Bd7] **50.Ke3**



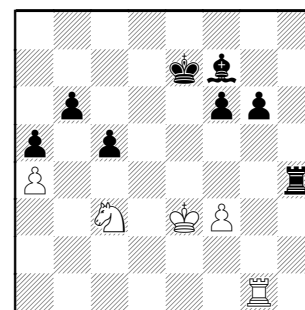
**50...b6**

50...Rxa4 51.Nd6+ Kg7 52.Nxb7

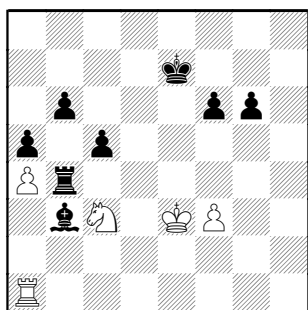


52...Rxh4 (52...c4? 53.Nc5) 53.Nxc5

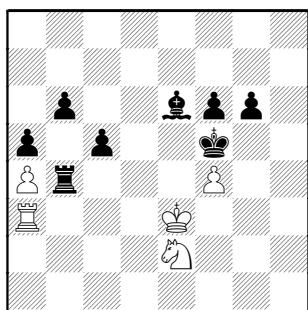
**51.Nd6+ Ke7 52.Ne4 Bf7 53.Nc3 Rxh4**



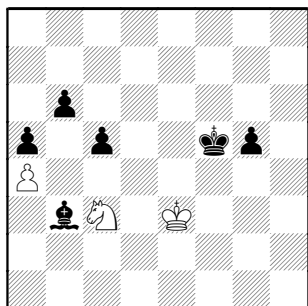
**54.Rb1 Rb4 55.Rd1 Rb3 56.Kd2 Rb4**  
**57.Ke3 Bb3 58.Ra1**



58...Ke6 59.f4 Kf5 60.Ra3 Be6 61.Ne2



61...Rb3+ 62.Rxb3 Bxb3 63.Nc3 g5  
64.fxg5 fxg5



This was the last game of the round to finish. The opponents merrily analyzed the game from start-to-finish, several times mentioning "I've gotta eat before next round..... oh, but how about..." The analysis continued right up to before the next round ! 0-1

#### Board 4, Kings-DGCC

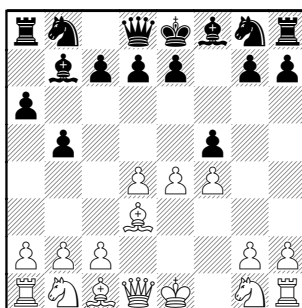
Horton,Dean (1929) –  
Potts,Kevin (1802)

[B00]

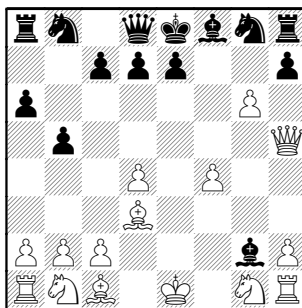
If Black's play interests you, reference his game from the first round:

Seets-Potts, CICL PO rnd 1 2008

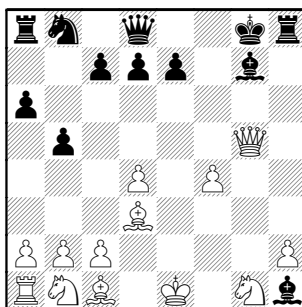
1.e4 a6 2.d4 b5 3.f4 [3...c4 is how White reacted there] 3...Bb7 4.Bd3 f5 This is the fun way!



5.exf5 Bxg2 6.Qh5+ g6 7.fxg6



7...Bg7 [7...Bxh1?? 8.g7#] 8.gxh7+ Kf8  
9.hxg8Q+ Kxg8 10.Qg5 Bxh1

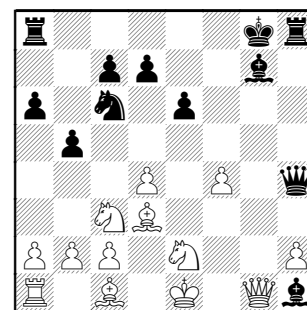


Black's pieces are scattered, but he is up an exchange.

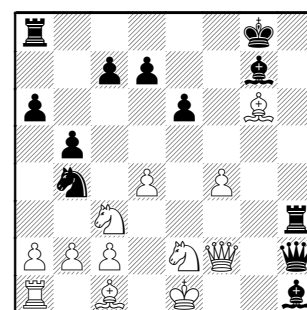
11.Nc3 Nc6 12.Nge2 e6 13.Qg1

13.Qg3 allows a Queen trade, but would come at improvement of the Pawns

13...Qh4+



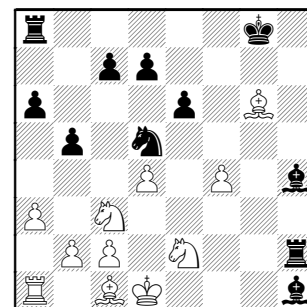
14.Qg3 [14.Kd1 may be possible]  
14...Nb4 15.Bg6 Qxh2 16.Qe3 [16.Qg5;  
16.Be3] 16...Rh3 17.Qf2



17...Bf6

17...Bg2 idea Rf3 also makes a Queen trade

18.Qxh2 Rxh2 19.a3 Bh4+ 20.Kd1 Nd5

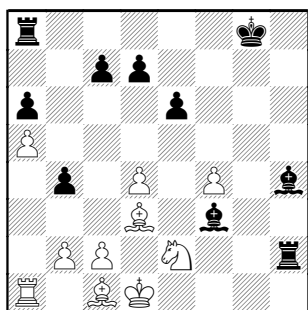


Black is already in clean-up mode

21.Nxd5 Bxd5 22.a4

White wants to activate his Rook via a3

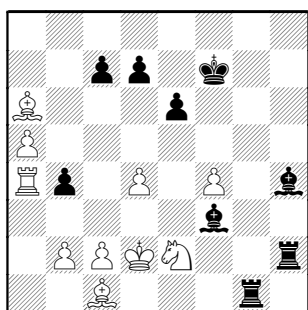
22...b4 23.a5 Bf3 24.Bd3



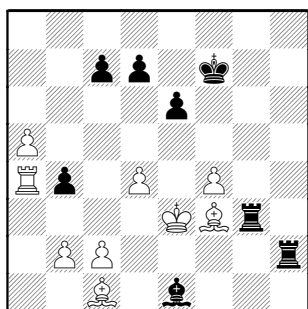
24...Kf7

24...Bg3 threatening 25.-- Bxf4! 26.Bxf4? Rh1+ wins the a1-Rook

25.Ra4 Rg8 26.Bxa6 Rg1+ 27.Kd2



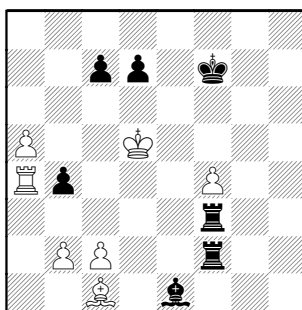
27...Be1+ [27...Rgg2] 28.Ke3 Bxe2 29.Bxe2 Rg3+ 30.Bf3



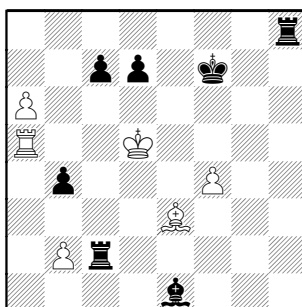
30...Rf2

30...d5! **MATE** in 4 !!

31.d5 Rgxf3+ 32.Ke4 exd5+ 33.Kxd5



33...Rh3 34.a6 Rh8 35.Be3 Rxc2 36.Ra5



36...Rh5+ 0-1

### Board 5, DGCC-Kings

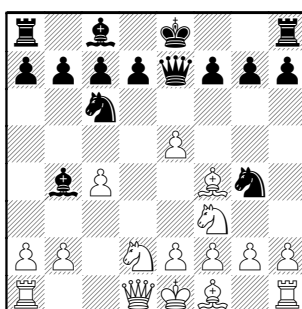
Curran,T (1696) –  
Cygan,Joe (1809)

[A52]

1.d4 Nf6 2.c4 e5 3.dxe5 Ng4 4.Bf4 Nc6 5.Nf3 Bb4+ 6.Nbd2

After 6.Nc3 the doublets aren't supposed to be a problem, but I play the game move as well.

6...Qe7

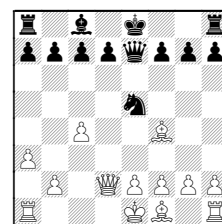


7.h3 Not necessary, Black will play his response anyhow.

7.a3 is the way I prefer, learned from GM practice via "Budapest for the Tournament Player", by Mikhail Tseitlin.

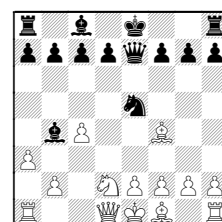
7...Ngxe5

White gets a bit more after (7...Bxd2+ 8.Qxd2 Ngxe5 9.Nxe5 Nxe5



10.c5!) idea of Rc1 makes d6,c7 and Ne5 weaknesses

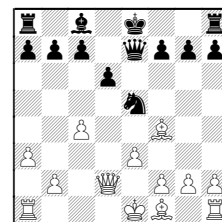
8.Nxe5 Nxe5



9.e3

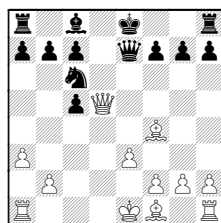
Geesh, in online games, speeding along, a couple times I fell for 9.axb4?? Nd3#

9...Bxd2+ 10.Qxd2 d6



Compare this with next game diagram, after 10...d6 . White comes out with a2-a3 for free! These are the kind of things that keep the "Frisk-monster" up all night.

Just to finish conveying the analysis, the book gives 11.c5 dxc5 12.Qd5 Nc6



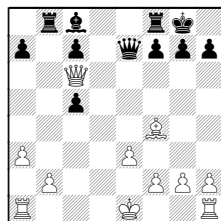
13.Bb5

The author says Black's OK after  
(13.Rc1 Nd4! 14.Rxc5 Ne6 15.Rc4 Nxf4  
16.Rxf4)

13...0-0

(13...Be6? is trouble ! 14.Bxc6+ bxc6  
15.Qxc6+)

14.Bxc6 bxc6 15.Qxc6 Rb8



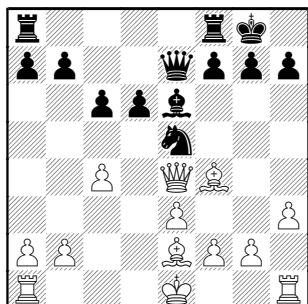
threats of Rxb2 and Bb7-xg2

Anywho, been meaning to review that  
line, so thanks for the reminder !

7...Ngxe5 8.Nxe5 Nxe5 9.e3 Bxd2+  
10.Qxd2 d6

Typical small plus for White in the  
Budapest. Skill is used to demonstrate  
the advantage of the Bishop pair.

11.Qd5 [11.Be2] 11...0-0 12.Be2 c6  
13.Qe4 Be6

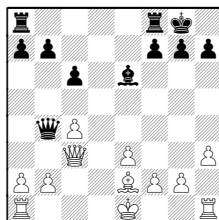


14.Qc2

14.Bxe5

**A) f5 15.Bxd6 Qxd6**

**B) 14...dxe5 15.Qxe5 Qb4+ 16.Qc3**



Another position where the doublets are  
acceptable.

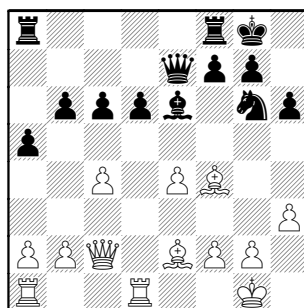
14...b6

14...Ng6 dodges the threatened  
undermining of e5 after White's c4-c5

**15.0-0 a5 16.Rfd1** pinning the Knight to  
block attack on d6 **16...h6**

16...f6 covers g5 while threatening d6-d5

17.e4 Ng6



18.Be3

Not seeing what's wrong with 18.Bxd6  
Qg5 19.Bxf8 Bxh3 20.Bf1

18...f5 19.Bd4

[19.Bxb6 c5 20.Qd2; 19.Qd2; 19.exf5  
Bxf5 20.Qd2]

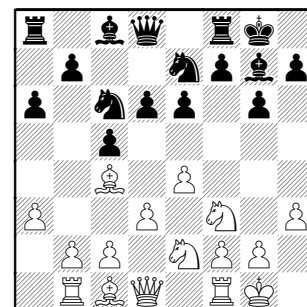
**19...Qg5 20.Qc3 [20.Rd3] 20...Nh4**  
**21.Bf1 c5 [only score ends here] 0-1**

**Board 6, Kings-DGCC**

**Goncharoff,Nik (1595) -**  
**Vecanski,Drago (1578)**

**[B30]**

**1.e4 c5 2.Nf3 Nc6 3.a3 d6 4.h3 g6**  
**5.Bc4 e6 6.d3 Bg7 7.0-0 Nge7 8.Nc3**  
**0-0 [8...d5] 9.Rb1 [9.Bg5] 9...a6 10.Ne2**

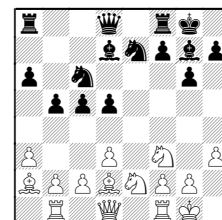


10...Bd7

10...b5 idea Bb7 is probably a better  
Bishop posting

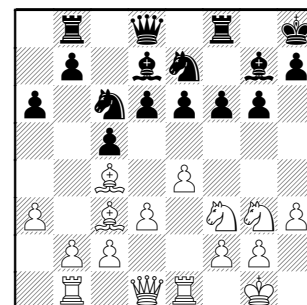
11.Bd2 Rb8

11...d5 12.exd5 exd5 13.Ba2 b5



14.Bc3 d4 15.Bd2 Nf5 idea c5-c4 makes  
White look fairly silly

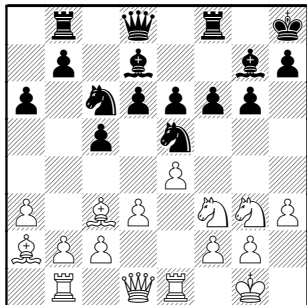
12.Bc3 f6 13.Ng3 Kh8 14.Re1



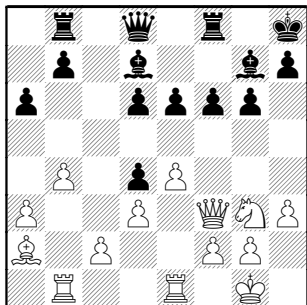
14...Ne5

I imagine Black will have more opportunities for the standard break: 14...d5 but this is the last time I'm noting it.

15.Ba2 N7c6

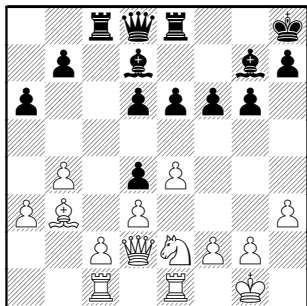


16.b4 Nxf3+ 17.Qxf3 Nd4 18.Bxd4 cxd4



Black's center Pawns have issues, but he does have possibilities down the c-file.

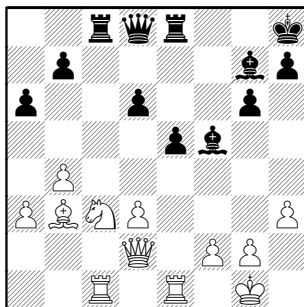
19.Bb3 Qe8 20.Qe2 Rc8 21.Qd2 Qd8 [21...Rc3 22.Ne2] 22.Rbc1 Re8 23.Ne2



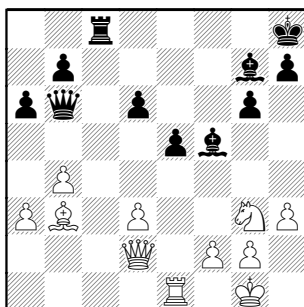
23...e5

23...f5 opens the Bishop's and Queen's paths 24.exf5 gxf5

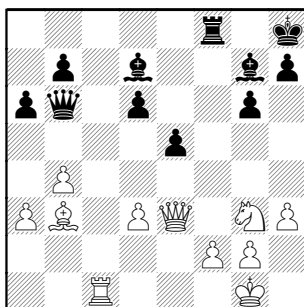
24.c3 dxc3 25.Nxc3 d5 beckons 25...f5 26.exf5 Bxf5



27.Ne4 Qb6 28.Rxc8 Rxc8 29.Ng3

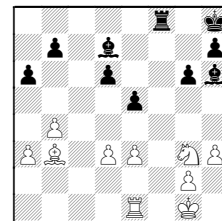


29...Bd7 30.Rc1 Rf8 31.Qe3



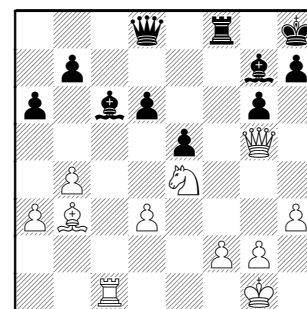
31...Qd8

31...Qxe3 32.fxe3 Bh6 33.Re1



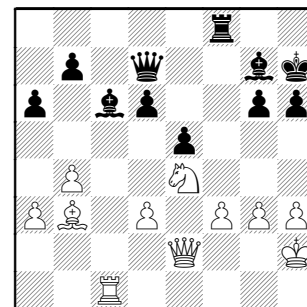
Not seeing much here

32.Ne4 [32.Bd5] 32...Bc6 33.Qg5 Qb6 34.Qe3 Qd8 35.Qg5

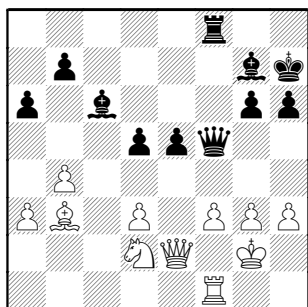


You think maybe White is only trying to draw ?

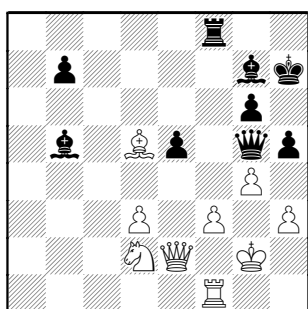
35...Qd7 36.Qe3 Rf4 37.g3 Rf8 38.Kh2 h6 39.f3 could become a long-term target 39...Kh7 40.Qe2



40...Qe7 41.Rf1 d5 42.Nd2 defensive [42.Nc5; 42.Nc3] 42...Qe6 43.Kg2 [43.Ne4] 43...Qf5

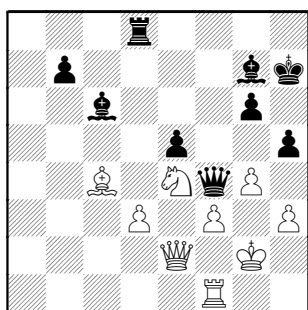


44.a4 h5 45.g4 Qg5 46.b5 axb5  
47.axb5 Bxb5 48.Bxd5



White has given his opponent an outside passer for no reason.

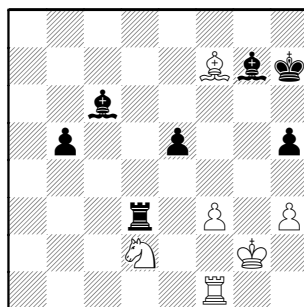
48...Rd8 49.Ne4 Qf4 50.Bc4 Bc6



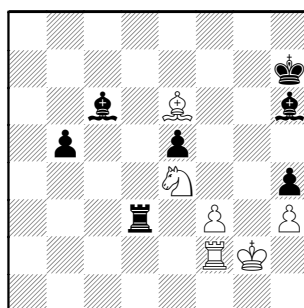
51.gxh5?! but this clearly opens up the King's defense

51...gxh5 52.Qd2 keeping the King from attack, but trading into a lost ending

52...Qxd2+ 53.Nxd2 b5 54.Bf7 Rxd3

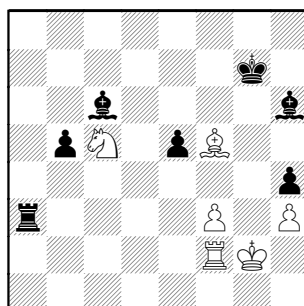


55.Rf2 Bh6 56.Ne4 h4 57.Be6



Black only has to avoid Bc6xe4, entering into an opposite Bishop scenario.

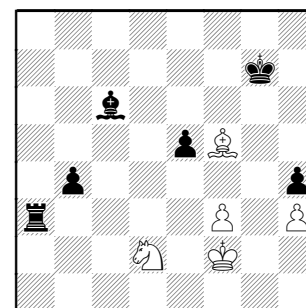
57...Kg7 [57...Rd1 would threaten Be3]  
58.Bf5 Re3 59.Nc5 [59.Rc2 is troublesome] 59...Rc3 60.Ne4 Ra3  
[60...Rc1] 61.Nc5?



61...Be3 62.Ne4

62.Rc2 Bxc5 63.Rxc5 Bxf3+ idea Kf6

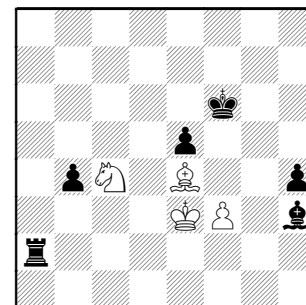
62...Bxf2 63.Kxf2 b4 64.Nd2 Ra2  
65.Ke3 Ra3+ 66.Kf2



66...Kf6 67.Be4 Bd7 cute

67...Bxe4 68.Nxe4+ Kf5 shouldn't be too hard

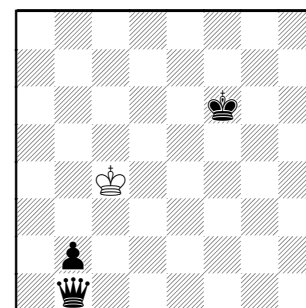
68.Nc4 [68.Kg2? Ra2] 68...Ra2+ 69.Ke3 Bxh3



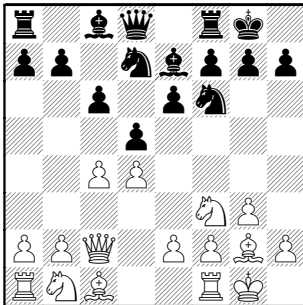
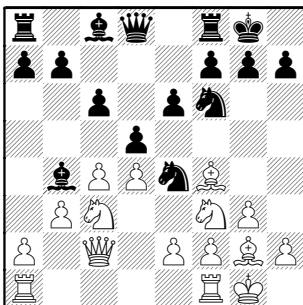
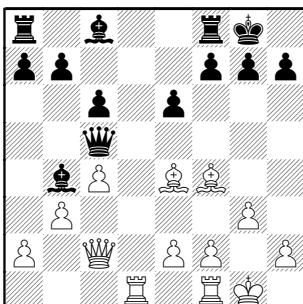
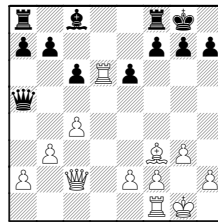
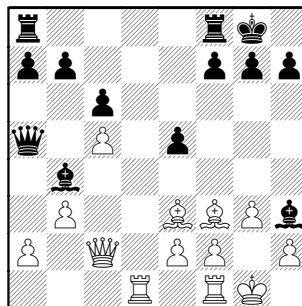
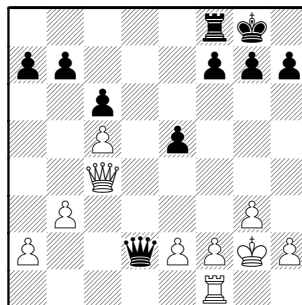
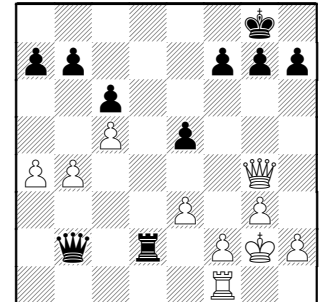
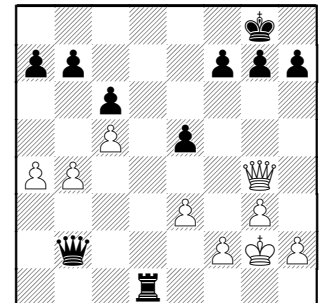
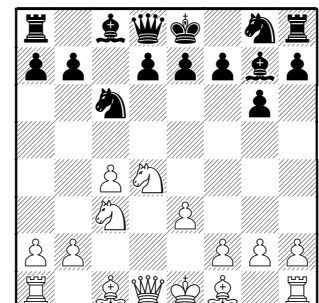
70.Nd2 Bg2 71.Nc4 h3 72.f4 exf4+  
73.Kxf4 Bxe4 74.Kxe4 h2 75.Kd4 h1Q  
76.Kc5 Qb1

76...Rc2 77.Kxb4 Qb7+ will win Knight or mate

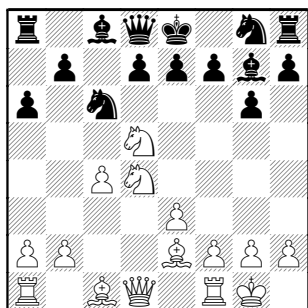
77.Nd6 Rc2+ 78.Kb5 b3 79.Nc4 Rxc4  
80.Kxc4 b2



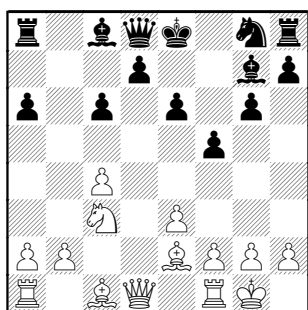
Nik: "Well, I guess I better resign." 0-1

**ROUND TWO, Match 4 : UOP [0.5-0.5] vs Northwestern University [0.5-0.5]****Finishing Order of the boards: 2, 5, 1, 3, 6, 4****Board 1, NWU-UOP****Bakshi, Ankur (2042) –  
Siwek, Mark (1952)****[E08]****1.Nf3 d5 2.c4 e6 3.d4 Nf6 4.g3 Be7  
5.Bg2 0-0 6.0-0 c6 7.Qc2 Nbd7****8.b3 Ne4 [8...b6 is the usual reply] 9.Nc3  
[9.Nbd2] 9...Ndf6 [9...f5; 9...Nxc3] 10.Bf4  
Bb4****11.Nxe4 dxe4 [11...Nxe4] 12.Ng5 Qxd4  
13.Rad1 Qc5 14.Nxe4 Nxe4 [14...Qf5]  
15.Bxe4****15...Qh5 16.Bf3 Qa5 17.Be3**White gets more play from 17.Bd6 Bxd6  
18.Rxd618...e5 19.Rfd1 Bh3 20.c5**17...e5 18.c5 Bh3****19.Bg2 Bxg2 20.Kxg2 Rad8 21.Qc4  
[21.a3!] 21...Bd2 22.Bxd2 Rxd2  
23.Rxd2 Qxd2****24.b4 Rd8 25.e3 Qb2 [25...a6] 26.a4  
Rd2?! too aggressive 27.Qg4 idea Qc8+****27...Rd8 28.Rd1 Rxd1??**Somehow both forgot the backrank threat just defended a move ago !  
**29.Qxd1?? [29.Qc8+ Rd8 30.Qxd8#]  
29...g6 30.Qd8+ Kg7 31.Qc7 Qxb4  
1/2-1/2****Board 2, UOP-NWU****Leong, Gee (1901) –  
Gorodetskiy, Steve (2041) [A35]****1.c4 c5 2.Nc3 Nc6 3.Nf3 g6 4.d4 cxd4  
5.Nxd4 Bg7 6.e3**

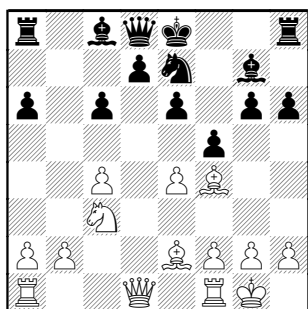
6...a6 [6...Nf6] 7.Be2 Qb6? 8.Nd5 Qd8  
9.0-0



9...e6 [9...Nf6] 10.Nc3 f5 11.Nxc6 bxc6



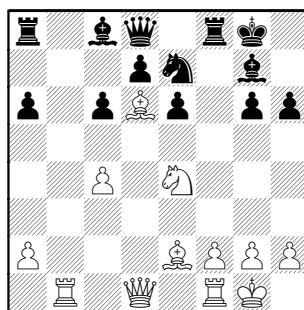
12.e4 Ne7 13.Bg5 h6 14.Bf4



14...0-0 15.Bd6 idea e4-e5 15...fxe4  
16.Nxe4

Black's position is a mess- the extra  
Pawn has no meaning.

16...Bxb2 17.Rb1 Bg7



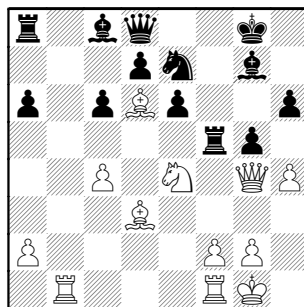
18.Bd3 g5

A) 18...Rf7 idea Nf5 19.Qg4

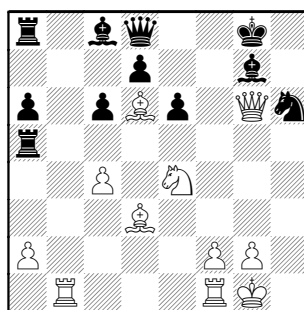
B) 18...Qe8 19.Qg4

C) 18...a5 attempts to clear the  
backrank with Bc8-a6

19.Qg4 [19.h4] 19...Rf5 [19...Rf7] 20.h4



20...Ra5 21.hxg5 Nf5 22.gxh6 Nxh6  
23.Qg6



23...Nf7 Watching live, couldn't believe  
Black would miss an obvious mate, but  
further examination proves no better is  
23...Nf5 24.Bc7! Qxc7 (24...Qe7  
25.Bxa5) 25.Nf6+ Kf8 26.Qe8#

24.Nf6+ idea Qh7#, regardless Black  
reply 1-0

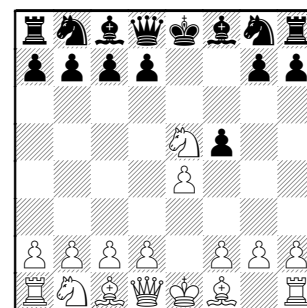
### Board 3, NWU-UOP

Smallwood, Jim (2000) –  
Van Meer, John (1920)

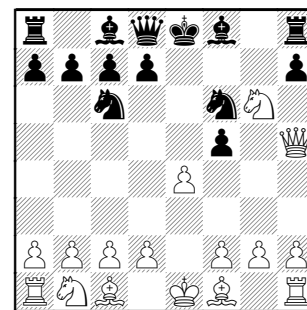
[C40]

This was my favorite game of the round,  
Black jumps out of the gate but gets a bit  
overextended. Watching live, I was  
impressed with White's calm demeanor,  
never too worried about the "pressure".

1.e4 e5 2.Nf3 f5 John apparently has an  
unusual opening book (see his first  
round start 1 d4 e5). 3.Nxe5



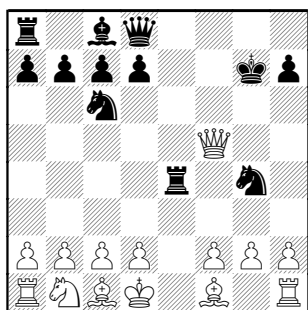
3...Nc6 [3...Qf6] 4.Qh5+ White's least-  
popular choice [4.Nxc6; 4.d4] 4...g6  
5.Nxg6 Nf6



6.Qh4 Rg8 7.Nxf8 Rg4 8.Qh6 Rxe4+  
[8...Qe7 9.f3 Nd4 10.Na3] 9.Kd1

9.Be2 Qe7 10.Nc3 Rxe2+ 11.Nxe2 Nd4  
12.0-0 Nxe2+ 13.Kh1 d6 (13...Qxf8  
14.Qe3+)

9...Ng4 10.Qh5+ Kxf8 11.Qxf5+ [11.d3  
Nxf2+] 11...Kg7

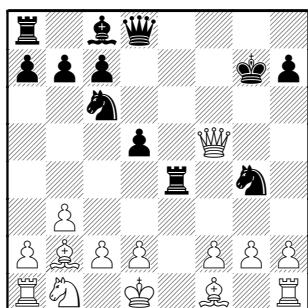


12.b3

A) 12.Qxe4?? Nxf2+ 13.Ke1 Nxe4;

B) 12.d3 d6 13.Qf3 Nxf2+ 14.Qxf2 Bg4+

12...d5 13.Bb2+



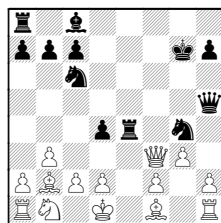
13...d4?

13...Nge5! clears g4 for the Bishop  
 14.Qh5 (14.Bxe5+ Nxe5 is the same thing)  
 14...Bg4+

14.Qf3 Qe7

Deep Shredder found a way for Black to keep up the pressure:

14...Qh4! 15.g3 Qh5



sets up a pin to the Queen, threatening Nxf2+ 16.Bg2 (16.Be2 Rxe2)

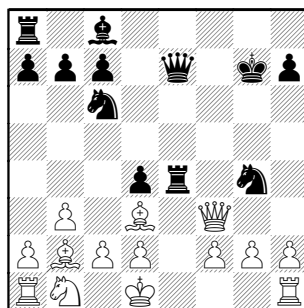
A) 16...Nce5! wins the Queen

B) 16...Nxf2+ 17.Kc1 Qf7

(17...Qxf3 18.Bxf3 White remains a Pawn up)

18.Qxf7+ Kxf7 19.Rf1

15.Bd3

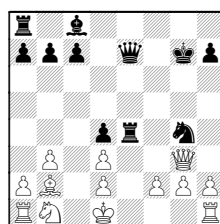


Black is in trouble, the Rook and Knight are too deep without enough support.

15...Nxf2+

A) 15...Re5 16.Qg3 Kh8 saves the piece, but not the game

B) One of the spectators pulled me aside, thinking there was a kill in  
 15...Nce5 16.Qg3 Nxd3 17.cxd3



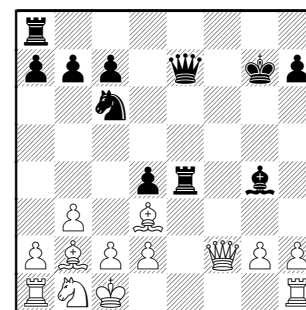
but the Rook must give up control of d4, and the Black King really is exposed:

B1) 17...Re5 18.Bxd4 pins Rook and Knight

B2) 17...Re2 18.Bxd4+ happens to cover f2 18...Kf7 (18...Kg8 19.h3) 19.Qf3+

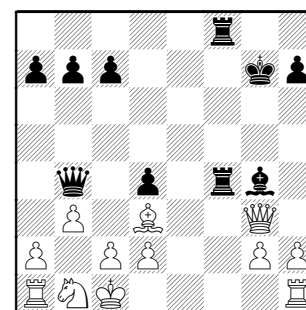
B3) ; b) 17...Re6 18.Qxg4+ Rg6 19.Qxd4+

16.Qxf2 Bg4+ 17.Kc1



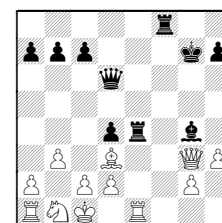
again, the Rook must retreat and White cleans up

17...Rf8 18.Qg3 now Rook and Bishop hang 18...Ref4 19.Ba3 [19.h3] 19...Nb4 20.Bxb4 Qxb4



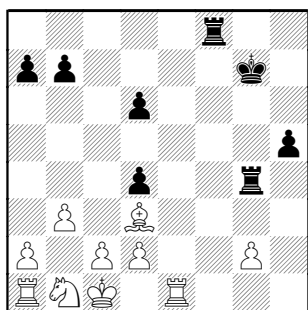
21.h3 Qd6 Cute, Rf1+ will now setup Qxg3 22.Re1 Now the discovery doesn't check- but White still has his pin! 22...h5

22...Re4

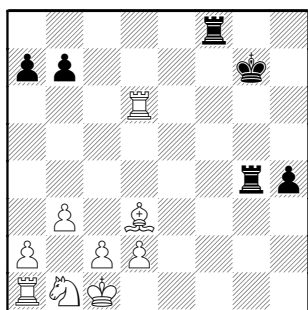


23.Rxe4! Qxg3 24.Rxg4+

23.hxg4 Rxg4 24.Qxd6 cxd6



25.Re4 Rxc2 26.Rxd4 Rg4 27.Rxd6 h4



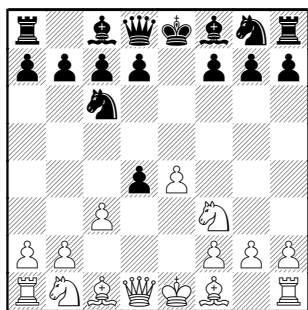
28.Rd7+ Kf6 29.Nc3 h3 30.Rh7 1-0

#### Board 4, UOP-NWU

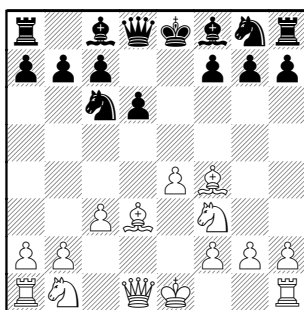
Boldingh, Edwin (1869) –  
Ullom, G (1797)

[C44]

1.e4 e5 2.d4 exd4 3.Nf3 Nc6 4.c3

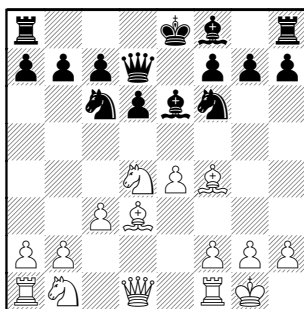


4...d3 [4...d5; 4...dxc3] 5.Bxd3 d6  
[5...Bc5] 6.Bf4



Guess he wants the Bishop out before  
Nbd2 is played [6.h3; 6.0-0; 6.Be3]

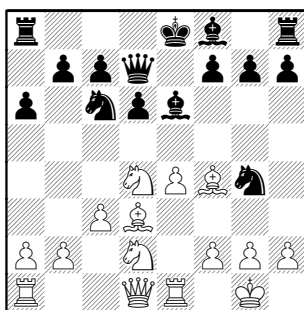
6...Nf6 7.0-0 Be6 [7...Be7] 8.Nd4  
[8.Ng5] 8...Qd7



9.Re1

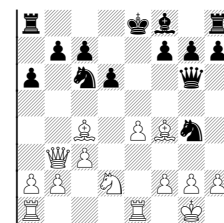
9.Bb5 Nxe4 10.Nd2 (10.Re1 d5 11.Nd2)

9...a6 10.Nd2 Ng4?!



11.Nxe6 Qxe6 [11...fxe6? 12.Qxg4]  
12.Bc4 Qg6 [12...Qd7] 13.Bd5

13.Qb3!

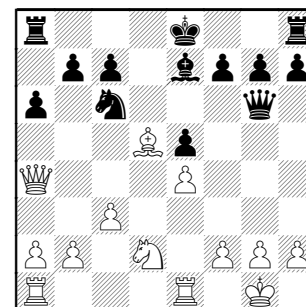


A) 13...Rb8 14.Bd5 Nge5

B) 13...Na5 14.Qa4+ Nc6 15.Bd5

C) 13...b5 14.Bd5 Nge5 15.Bxc6+ Nxc6  
16.Qd5 Kd7

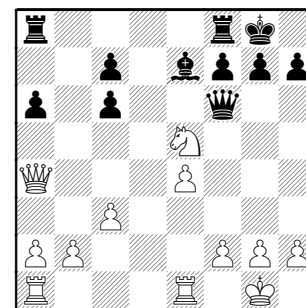
13...Be7 [13...Nge5] 14.Qa4 Nge5  
15.Bxe5 dxe5



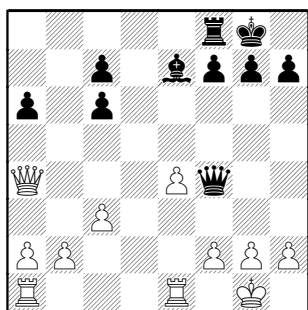
16.Nf3 0-0

16...b5 17.Qc2 idea Nxe5

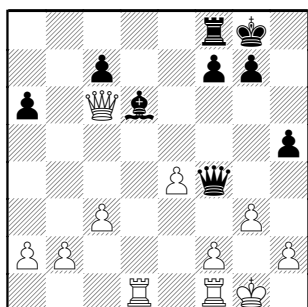
17.Bxc6 bxc6 18.Nxe5 Qf6?



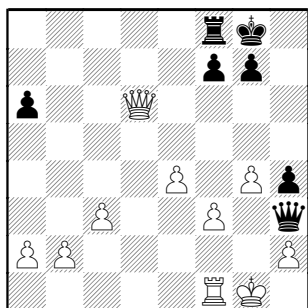
19.Nd7 Qf4 20.Nxf8 Rxf8



21.Rad1 [21.Qxa6] 21...Bc5 22.Rf1  
[22.Re2] 22...h5 23.Qxc6 Bd6 24.g3



24...Qg4 25.f3 Qh3 26.Rxd6 cxd6  
27.Qxd6 h4 28.g4



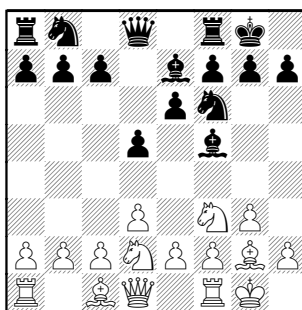
1-0

### Board 5, NWU-UOP

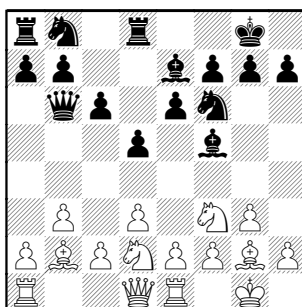
Solomon, Andrew (1854) -  
Easton, Richard (1850)

[A07]

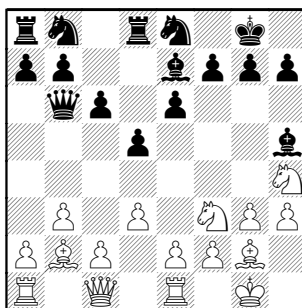
1.Nf3 Nf6 2.g3 d5 3.Bg2 Bf5 4.d3 e6  
5.0-0 Be7 [5...h6] 6.Nbd2 0-0



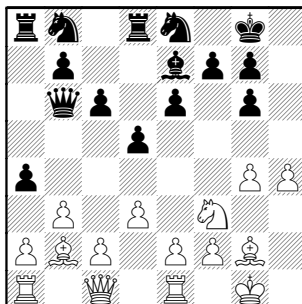
7.Re1 [7.Nh4; 7.Qe1] 7...c6 8.b3 Qb6  
9.Bb2 Rd8



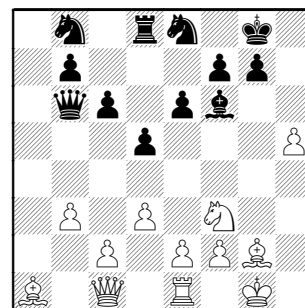
10.Nh4 Bg4 11.h3 Bh5 12.Qc1 Ne8  
[12...Nbd7] 13.Ndf3



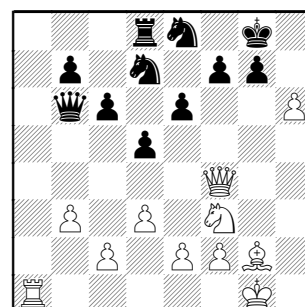
13...a5 14.g4 Bg6 15.Nxg6 hxg6 16.h4  
[Maybe some center action: 16.e4]  
16...a4



17.h5 gxh5 18.gxh5 axb3 19.axb3  
Rxa1 20.Bxa1 Bf6

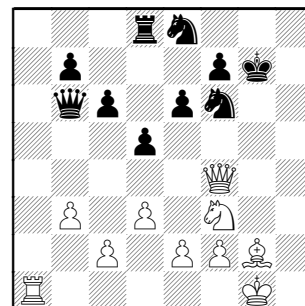


21.Qf4 Nd7 22.h6 Bxa1 23.Rxa1



Another game in dynamic balance.  
White's pieces are better placed, but  
Black has no weaknesses to attack.

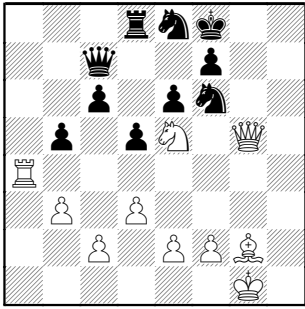
23...Ndf6 24.hxg7 Kxg7



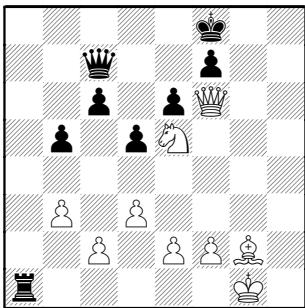
25.Ra4

25.e4 idea e4-e5, gains the e4 square  
for the Bishop, and then White can make  
a run at the King. I'm envisioning  
Pe5, Be4, Qg5, Kg2, Rh1-h8#

25...Qc7 26.Ne5 b5 27.Qg5+ Kf8



28.Rf4 Ra8 29.Rxf6 Nxf6 30.Qxf6 Ra1+



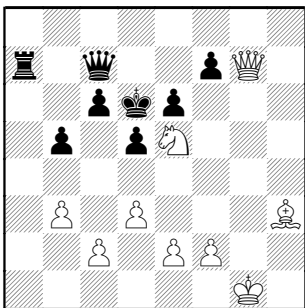
31.Bf1 idea Ng6+ to play Qxa1

Seems to me, a longer-term threat is 31.Kh2 with idea Bf3-h5

31...Ra7

[31...Rc1? 32.Qh6+;  
31...Ra2 32.Bh3]

32.Bh3 idea Bxe6 32...Ke8 33.Qh8+ Ke7 34.Qg7 Kd6



35.d4 f5 36.Qf8+ Qe7 37.Qxe7+ Kxe7?  
allowing Nxc6+ forking

37...Rxe7 It's hard to see either side making progress.] 1-0



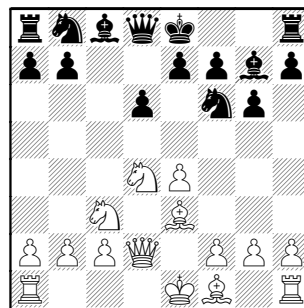
Self-portrait or chess magic ?

Board 6, UOP-NWU

Lechnick, Jay (1762) –  
Wang, Ben (1759)

[B72]

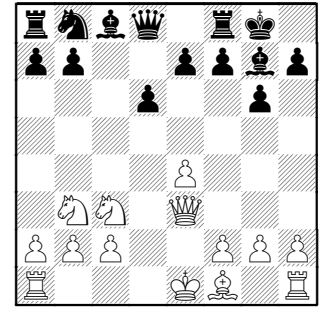
1.e4 c5 2.Nf3 d6 3.d4 cxd4 4.Nxd4 Nf6  
5.Nc3 g6 6.Be3 Bg7 7.Qd2



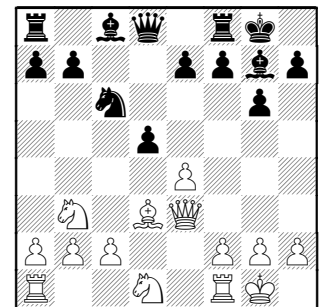
7...Ng4 8.Nb3

8.Bg5 is the correct response

8...Nxe3 9.Qxe3 0-0



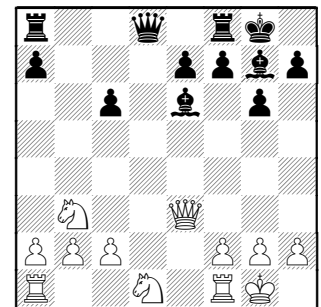
10.Bd3 Nc6 11.Nd1 Apparently dodging Bxc3, but White's pieces have no scope and this move even gets in the way of the Rook. 11...d5 12.0-0



12...dxe4

Maybe Black is better cramping White with 12...d4

13.Bxe4 Be6 14.Bxc6 bxc6



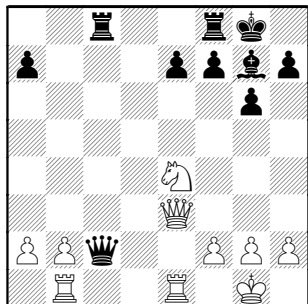
White has sold his Bishop pair for nothing. The Black Pawns are easily defended.

15.Nc3 Qc7 16.Rab1 Rac8 [16...Rfd8]  
17.Rfe1 c5 Don't like giving White the b5 and d5 squares

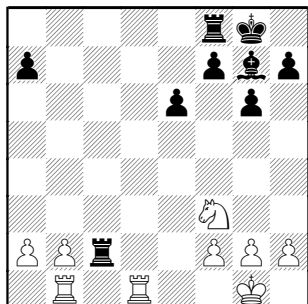
18.Ne4 not a long-term post

18.Rbd1 idea Nd5 18...Rfd8? 19.Rxd8+  
Rxd8 (19...Qxd8 20.Nxc5) 20.Qxc5

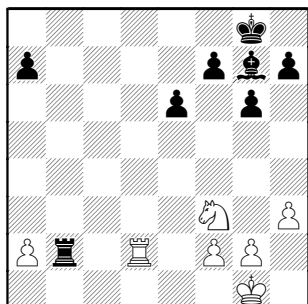
18...Bf5 [18...c4; 18...Qb6] 19.Nbxc5  
Bxe4 20.Nxe4 Qxc2



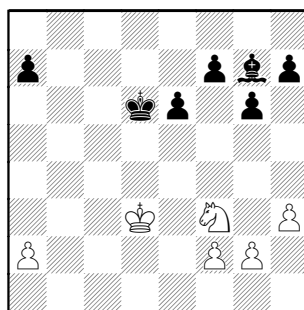
21.Qd2?! Apparently missing Black can  
capture the 2nd rank- usually worth a  
Pawn. 21...Qxd2 22.Nxd2 Rc2 23.Nf3  
e6 24.Red1



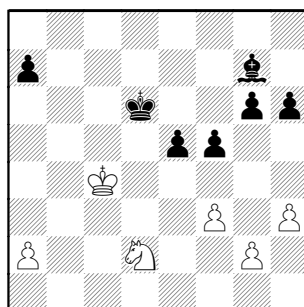
24...Rb8 25.h3 Rxb2 26.Rxb2 Rxb2  
27.Rd2



27...Kf8 28.Kf1 Ke7 29.Ke2 Rxd2+  
30.Kxd2 Kd6 31.Kd3 [31.Ng5? Bh6]



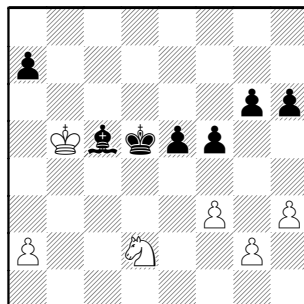
31...h6 [31...Kc5 32.Ng5] 32.Kc4 e5  
33.Nd2 f5 34.f3



34...Kc6 35.Kb4 Bf8+

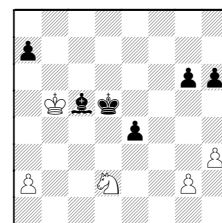
Black should advance the King and  
capture the e4 square with 35...Kd5  
36.Kb5 e4

36.Ka5? [36.Kc4] 36...Bc5 37.Ka4 Kd5  
38.Kb5



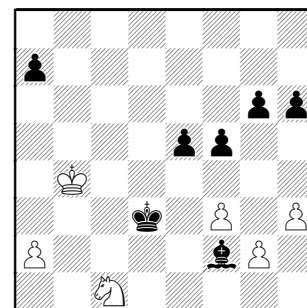
38...Bf2

38...e4 is still possible 39.fxe4+ fxe4



40.Nxe4? a6+!

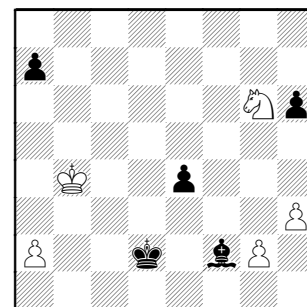
39.Kb4 Kd4 40.Nb3+ Kd3 41.Nc1+



41...Kc2

41...Kd2 and head for the Kingside  
Pawns

42.Ne2 Kd2 43.Nc3 Kd3 44.Nd5 e4  
45.Nf4+ Kd2 46.fxe4 fxe4 47.Nxg6



47...e3 48.Ne5 e2 49.Nf3+ Ke3 50.Kb5  
Kf4 0-1