

The Chicago Chess Player

The Official Bulletin of the Chicago Industrial Chess League

MACK SMITH DRAWS GM CABAL !!



CICL Contact List

Bulletin Editor/Webmaster Bulletin@ChicagoChessLeague.org	Tom Friske 1035 E Algonquin Road Des Plaines, IL 60016	H:(847) 299-1033 W:{847} 914-8448
Ratings Chairman Ratings@ChicagoChessLeague.org	Art Olsen 714 E Algonquin Road #J102 Arlington Heights, IL 60006	H:(847) 437-9819 W:(847) 719-8036
	FAX : to SBS OTS, 22NW0644-5 at (847) 719-8151	
League President President@ChicagoChessLeague.org	Tony Jasaitis	C:(708) 903-6423 W:(312) 264-2044
League Secretary Secretary@ChicagoChessLeague.org	Jerry Thomas 745 Hageman Pl Naperville, IL 60563	H:(630)420-0188
League Treasurer Treasurer@ChicagoChessLeague.org	Paul Freidel 359 N. Worth Avenue Elgin, IL 60123	C:(224)436-6050
Trophy Chairman Trophy@ChicagoChessLeague.org	Marty Franek 9044 S 51 st Avenue Oak Lawn, IL 60453-1730	H: (708) 636-3714 W: (312) 353-0397
Publicity Chairman Publicity@ChicagoChessLeague.org	Matt Vail	C: (312) 933-1516 W: (630)505-6557
Banquet Chairman Banquet@ChicagoChessLeague.org	Wayne Ellice	H: (708) 636-1303

DIVISIONAL CHAIRMEN

East Division ChairmanEast@ChicagoChessLeague.org	Adam Muhs	C: (847) 877-9629 W: (312) 497-1184
West Division ChairmanWest@ChicagoChessLeague.org	Bob Buchner 1316 Kallien Court Naperville, IL 60540	H: (630) 428-7707 W: (630) 979-7707
North Division ChairmanNorth@ChicagoChessLeague.org	Jim Thomson	W: (847) 538-5408

Mark Your Calendars with These Key League Dates:

Fall Business Meeting	Last Wednesday of August (Aug 29 2007)
Spring Business Meeting	3.5 Weeks Before Playoffs (April 16, 2008)
Season Playoffs	Second Saturday of May (May 10, 2008)
CICL Open	Second Saturday of May (May 10, 2008)
League Awards Banquet	First Friday of June (June 6, 2008)

Officer Contact List	2
Contents of Issue	3
News	4

SEASON UPDATE

Current Standings	5
Performance Ratings	6
Top Ten by Division	7
Most Improved Players	7
Match Results	8
Current Ratings	14

FEATURES

Mack Smith draws GM Karpov at simul	17
Tactics, Tactics, Tactics !	26
A Tribute to Teddy Santiago	28
A Lover of Chess Beauty	40
Tactics Solutions	41

On the cover...

Mack Smith gives us a splendid blow-by-blow account of his simul challenge versus a tag-team made from GMs !

With contributions from Mack Smith, Tony Jasaitis, Rob Morris, and Art Olsen

Illinois' Premier Chess Organization
EARLY ENTRY FEE ENDS March 31
 Knights Quest Tournament
 April 6

3rd year Knights Quest Series !

The original series where players earn points that could win
 a 'Golden Cup Trophy' in December 2008

Renaissance Hotel, 933 Skokie Blvd, Northbrook
 4-round SS, Game 30
 USCF & CXR Rated
 Registration: 12:00 - 12:30 PM
 Rounds: Rd 1 at 1:00 PM, rest ASAP

3 SECTIONS:

Open (Jrs. & Adults)
 Scholastic U1200 (Jrs.)
 Scholastic U800 (Jrs.)

Awards: Top 5 each section
 Plus, all others participation medal

Entry Fee: Online entry \$25 by March 31, \$30 after
 \$5 discount to RKNIGHTS & JR. KNIGHTS Members
 Enter Online

Limited to first 60 players.

Food & refreshments available for purchase
 Bring your chess clock, sets will be provided.
 USCF Membership Required / FREE CXR membership !

Champion of the Quest
 The player with the most points in each section wins
 a stunning 'Golden Cup Trophy' on a marble base.
 Plus, 2nd to 4th Place 'Runner-Up' Cup Trophies.
 The point system for the series: Win 1.0, Draw .5, Loss .25.
 The Champions are awarded with the Quest Cups
 December 2008

ADOPT-A-SCHOOL NEEDS YOU

Have you ever wondered about involving yourself or your
 business as an adopter for a local school? Well, this is the
 perfect time to find out more about that possibility! Why not
 consider taking an active role as an
 Adopt-A-School partner?

Read more about our Adopt-A-School Program
 A nonprofit organization working with children to create the
 desire to succeed both in school and in life

**RESERVE THE
 FOLLOWING
 POST-SEASON DATES NOW !!!**

Spring Business Meeting

April 16th

Lucent – Naperville

Playoffs &

Another event FOR ALL !

May 10th

(location TBA)

Awards Banquet

June 6th

EAST DIVISION 03-11-2008

TEAM NAME				GAME	MATCH	PCT	PR	USAT
	W	L	D	POINTS	POINTS			
HEDGEHOGS	5	1	0	27.0	5.0	0.833	1952	60.5
NORTHWESTERN CHESS CLUB	4	1	0	20.0	4.0	0.800	1844	35.0
AMA ROUGE SQUADRON	2	2	0	10.5	2.0	0.500	1624	16.0
CITADEL GROUP	2	5	0	18.0	2.0	0.286	1543	31.0
AMA TORNADO SNAKES	1	5	0	8.5	1.0	0.167	1442	27.5

NORTH DIVISION 03-11-2008

TEAM NAME				GAME	MATCH	PCT	PR	USAT
	W	L	D	POINTS	POINTS			
MOTOROLA KNIGHTS	5	1	1	30.0	5.5	0.786	1850	64.0
MOTOROLA KINGS	5	1	1	28.5	5.5	0.786	1880	76.5
UOP	3	1	3	23.5	4.5	0.643	1761	74.3
WALGREEN SKEWERS	3	4	0	17.5	3.0	0.429	1666	44.3
WALGREEN FORKS	2	4	0	13.0	2.0	0.333	1648	35.5
EXCALIBURS	1	4	1	13.5	1.5	0.250	1622	42.8
NORTHROP	1	5	1	14.0	1.5	0.214	1566	45.5

WEST DIVISION 03-11-2008

TEAM NAME				GAME	MATCH	PCT	PR	USAT
	W	L	D	POINTS	POINTS			
ST CHARLES BAKER	6	0	1	32.0	6.5	0.929	2098	84.0
DOWNERS GR CHESS CLUB	5	0	2	30.5	6.0	0.857	1968	66.3
ST CHARLES CHESS CLUB	5	2	0	26.0	5.0	0.714	1827	48.0
FERMILAB	4	2	1	22.5	4.5	0.643	1773	37.0
LUCENT TECH. DRAGONS	3	2	2	23.5	4.0	0.571	1804	75.3
LUCENT TECH. TYROS	4	3	0	25.0	4.0	0.571	1792	47.3
PAWNS	2	4	1	19.0	2.5	0.357	1611	33.3
ARGONNE ROOKS	2	4	1	16.5	2.5	0.357	1508	10.8
BP CHICAGOLAND	0	7	0	5.0	0.0	0.000	1158	7.0
MOLEX	0	7	0	8.0	0.0	0.000	1286	30.0

**CICL Performance Ratings
03/12/2008**

Team	Division	Games Ave	Board PR	Match PR	PR (B+M) / 2	PR Adjusted
ST CHARLES BAKER	West	4.8	1890.6	2305.0	2098	2298
DOWNERS GR CHESS CLUB	West	5.8	1890.8	2044.5	1968	2168
HEDGEHOGS	East	4.2	1916.5	1986.6	1952	2115
ST CHARLES CHESS CLUB	West	5.5	1747.6	1907.3	1827	2027
NORTHWESTERN CHESS CLUB	East	2.8	1877.4	1810.4	1844	2008
LUCENT TECH. DRAGONS	West	6.5	1747.4	1860.0	1804	2004
LUCENT TECH. TYROS	West	5.2	1751.0	1832.9	1792	1992
FERMILAB	West	5.3	1678.9	1867.0	1773	1973
MOTOROLA KINGS	North	5.5	1895.8	1864.6	1880	1917
MOTOROLA KNIGHTS	North	5.8	1869.2	1830.0	1850	1886
PAWNS	West	5.8	1532.4	1689.6	1611	1811
UOP	North	5.8	1727.5	1795.4	1761	1798
AMA ROUGE SQUADRON	East	3.0	1567.8	1680.9	1624	1788
ARGONNE ROOKS	West	5.3	1548.0	1468.7	1508	1708
CITADEL GROUP	East	4.2	1544.1	1541.2	1543	1706
WALGREEN SKEWERS	North	5.3	1633.4	1698.2	1666	1702
WALGREEN FORKS	North	4.5	1598.0	1698.1	1648	1684
EXCALIBURS	North	5.5	1610.0	1633.0	1622	1658
AMA TORNADO SNAKES	East	3.0	1304.2	1578.8	1442	1605
NORTHROP	North	4.7	1519.5	1613.2	1566	1603
MOLEX	West	4.8	1426.3	1146.0	1286	1486
BP CHICAGOLAND	West	3.3	1248.1	1067.5	1158	1358

EAST DIVISION TOP TEN

FRANKLIN, D	HEDGE	2190
GORODETSKIY, S	NWEST	2065
RAUCHMAN, M	HEDGE	2063
BAKSHI, A	NWEST	2062
BROCK, B	AMARS	2042
JASAITIS, A	HEDGE	1998D
SMITH, M	HEDGE	1965
SMALLWOOD, J	NWEST	1964
HAYHURST, W	CITGR	1916
ALLEN, H	AMARS	1870

NORTH DIVISION TOP TEN

MORRIS, R	MKNGT	2242C
FRIDMAN, Y	MKNGT	2214C
LEVENSON, S	SKEWR	2057
MELNIKOV, I	MKING	2028C
HART, V	NORTH	2013
THOMSON, J	MKNGT	2004C
FRISKE, T	FORKS	1996C
PIPARIA, J	MKING	1983
WALLACH, C	MKING	1971C
SANTIAGO, T	FORKS	1954C

WEST DIVISION TOP TEN

MARSHALL, J	STCCC	2244
GARZON, G	FERMI	2243
NGUYEN, T	BAKER	2239
KLUG, S	DGCC	2188
KRAS, T	PAWNS	2166C
BENEDEK, R	ROOKS	2133T
DIAZ, P	TYROS	2082D
ALLSBROOK, F	TYROS	2075
KALAVAGUNTA, S	DGCC	2065
RASO, P	BAKER	2063

MOST IMPROVED PLAYERS

HLOHOWSKYJ, I	ROOKS	114
WAKERLY, R	DGCC	103
PIPARIA, J	MKING	90
MCGOWAN, D	MOLEX	73
CYGAN, J	MKING	69
HART, V	NORTH	65
KOMORAVOLU, K	DRGNS	64
DERIY, B	ROOKS	64
NGUYEN, T	BAKER	62
EUSTACE, D	DRGNS	62

16-JAN-08 WALGREEN SKEWERS**3.5 NORTHROP****2.5**

ROUND 6

BD	RATINGS	SCORE		RATINGS	SCORE
1 LEVENSON, S	2073-28	0	HART, V	1987 28	1
2 MCGUIRE, A	0 0	0	ENGELIN, M	1612 0	1
3 GRANATA, M	1870 8	1	AUBRY, B	1601 -8	0
4 BIALON, D	1789-12	.5	VIGANTS, A	1585 8	.5
5 ANSARI, N	1613 0	1F		0 0	0F
6 KANNAPPAN, V	0 0	1F		0 0	0F

16-JAN-08 WALGREEN FORKS**1 MOTOROLA KNIGHTS****5**

ROUND 6

BD	RATINGS	SCORE		RATINGS	SCORE
1 FRISKE, T	2002 -7	0	FRIDMAN, Y	2199 7	1
2 SANTIAGO, T	1955 -5	0	MORRIS, R	2231 5	1
3 HAMELINK, N	1746 0	.5	THOMASON, A	0 0	.5
4 HUGHES, N	1633 -6	0	BALICKI, J	1873 6	1
5 DOSIBHATLA, D	1577 8	.5	KARANDIKAR, S	1689 -8	.5
6 NICK, X	0 0	0	DUONG, R	1567 0	1
7 PERSONS, J	0 0	0	BABINEC, J	1348 0	1

24-JAN-08 EXCALIBURS**3 UOP****3**

ROUND 6

BD	RATINGS	SCORE		RATINGS	SCORE
1 LEE, D	1899 27	1	SIWEK, M	1965-18	0
2 DOWELL, E	1772 9	.5	LEONG, G	1915 -6	.5
3 WEITZ, R	1593 -6	0	EASTON, R	1837 9	1
4 BROTSOS, J	1555 -7	0	LECHNICK, J	1757 7	1
5 SUERTH, F	1514 4	.5	NALLATHAMBI, R	1600 -6	.5
6 REID, C	1404 20	1	MICKLICH, F	1513-20	0

05-FEB-08 NORTHROP**1.5 WALGREEN FORKS****4.5**

ROUND 7

BD	RATINGS	SCORE		RATINGS	SCORE
1 HART, V	2015 -2	.5	FRISKE, T	1995 1	.5
2 ENGELIN, M	1612 -6	0	SANTIAGO, T	1950 4	1
3 AUBRY, B	1593-13	0	HAMELINK, N	1746 13	1
4 VIGANTS, A	1593-14	0	HUGHES, N	1627 14	1
5 SIEGEL, R	1481 0	1	NICK, X	0 0	0
6	0 0	0F	DOSIBHATLA, D	1585 0	1F

31-JAN-08 UOP**4 WALGREEN SKEWERS****1**

ROUND 7

* Split Match - Walgreens board 1 is a upper board forfeit
 UOP was awarded 1 game point for the UBF
 Boards 2 and 4 scheduled for the 2nd day
 of the split match were not played by the
 mutual agreement of both teams.

BD		RATINGS	SCORE		RATINGS	SCORE
1	BOLDINGH, E	1877	0	1F	LEVENSON, S	2045 0 0F
2	LEONG, G				MCGUIRE, A	
3	SIWEK, M	1947-18	0		GRANATA, M	1878 27 1
4	EASTON, R				BIALON, D	
5	LECHNICK, J	1764	9	1	ANSARI, N	1613-13 0
6	NALLATHAMBI, R	1594	0	1	KACZYNSKI, W	0 0 0

28-FEB-08 MOTOROLA KINGS**3.5 EXCALIBURS****2.5**

ROUND 7

BD		RATINGS	SCORE		RATINGS	SCORE
1	WALLACH, C	1964	13	1	LEE, D	1926-20 0
2	PIPARIA, J	1942	14	1	BRONFELD, A	1804-14 0
3	CYGAN, J	1805-24	0		DOWELL, E	1781 24 1
4	GONCHAROFF, N	1594	0	.5	WEITZ, R	1587 0 .5
5	GRYPARIS, J	1412-14	0		REID, C	1424 14 1
6	RABINOVICH, E	1566	0	1F		0 0 0F

04-MAR-08 WALGREEN SKEWERS**1.5 UOP****4.5**

ROUND 8

BD		RATINGS	SCORE		RATINGS	SCORE
1	LEVENSON, S	2045	12	1	BOLDINGH, E	1877 -8 0
2	GRANATA, M	1905	-4	.5	EASTON, R	1846 4 .5
3	BIALON, D	1777-13	0		SIWEK, M	1929 9 1
4	ANSARI, N	1600-12	0		LECHNICK, J	1773 8 1
5	KACZYNSKI, W	0	0	0	NALLATHAMBI, R	1594 0 1
6	KANNAPPAN, V	0	0	0	OLSEN, A	1460 0 1

20-FEB-08 MOTOROLA KINGS**2 MOTOROLA KNIGHTS****4**

ROUND 8

BD		RATINGS	SCORE		RATINGS	SCORE
1	MELNIKOV, I	2036	-8	0	FRIDMAN, Y	2206 8 1
2	WALLACH, C	1977	-6	0	MORRIS, R	2236 6 1
3	PIPARIA, J	1956	27	1	THOMSON, J	2022-18 0
4	CYGAN, J	1781	29	1	BALICKI, J	1879-19 0
5	GONCHAROFF, N	1594	-8	0	KARANDIKAR, S	1681 17 1
6	JOSHI, B	1572-18	0		CHERKASSKY, G	1649 18 1
7	RABINOVICH, E	1566-35	0		BABINEC, J	1348 35 1

01-JAN-08 ST CHARLES BAKER 6 BP CHICAGOLAND 0

ROUND 4

BD	RATINGS	SCORE	RATINGS	SCORE
1 NGUYEN, T	2204 0	1F	0 0	0F
2 RASO, P	2063 0	1F	0 0	0F
3 FREIDEL, JESSE	1978 0	1F	0 0	0F
4 FREIDEL, P	1971 0	1F	0 0	0F
5 ALBERTS, W	1565 0	1F	0 0	0F
6 JANSSEN, G	1518 0	1F	0 0	0F

01-JAN-08 ST CHARLES BAKER 3 DOWNERS GR CHESS CLUB 3

ROUND 5

BD	RATINGS	SCORE	RATINGS	SCORE
1 NGUYEN, T	2204 22	1	KLUG, S	2192-22 0
2 FREIDEL, JESSE	1978 28	1	KALAVAGUNTA, S	2058-28 0
3 FREIDEL, P	1971 12	1	POTTS, K	1802-12 0
4 ALBERTS, W	1565-10	0	WAKERLY, R	1776 10 1
5 JANSSEN, G	1518-12	0	CURRAN, T	1699 12 1
6 GREER, J	1388-10	0	SMITH, BR	1603 7 1
7 VOIGHT, T	1213 0	0	BARBARI, N	0 0 1
8 BALES, R	1369 37	1	GONZALES, T	1646-37 0

17-JAN-08 BP CHICAGOLAND 0 FERMILAB 5

ROUND 5

BD	RATINGS	SCORE	RATINGS	SCORE
1 RINGENBERG, T	1468 -2	0	SPIEGEL, L	1965 2 1
2 DENEEN, D	1463 0	0F	GAINES, I	1741 0 1F
3 SUVARNAKANTI, R	1216 -2	0	SEDOV, A	1765 2 1
4 MANILA, M	1106 -4	0	DEGRAF, B	1508 4 1
5 HERNANDEZ, F	958 -2	0	ANNIS, J	1469 2 1

30-JAN-08 LUCENT TECH. DRAGONS 5 BP CHICAGOLAND 1

ROUND 6

BD	RATINGS	SCORE	RATINGS	SCORE
1 TEGEL, F	2051 6	1	COULTER, D	1891-13 0
2 STAMM, V	1508 9	1	RINGENBERG, T	1466-20 0
3 EUSTACE, D	1504 4	1	ZUBIK, J	1192 -6 0
4 KOMORAVOLU, K	1355 14	1	SUVARNAKANTI, R	1214-14 0
5 BREYER, A	1329-35	0	MANILA, M	1102 35 1
6 THOMAS, J	1482 0	1F		0 0 0F

21-JAN-08 DOWNERS GR CHESS CLUB 6 MOLEX 0

ROUND 6

BD	RATINGS	SCORE	RATINGS	SCORE
1 KALAVAGUNTA, S	2030 9	1	REICH, T	1794 -9 0
2 EGERTON, J	1995 5	1	ZADEREJ, V	1633 -5 0
3 WAKERLY, R	1786 7	1	HENDRICKSON, B	1504 -7 0
4 CURRAN, T	1711 10	1	MCGOWAN, D	1502-10 0
5 POTTS, K	1790 2	1	DEICHMANN, E	1277 -2 0
6 GONZALES, T	1609 7	1	RUFUS, B	1311 -7 0
7 ALOP, J	0 0	0	YALAVARTHI, R	1743 0 1 (DGCC)

12-FEB-08 PAWNS**3 ARGONNE ROOKS****3**

ROUND 6

BD	RATINGS	SCORE	RATINGS	SCORE
1 KRAS, T	2152 14	1	HILL, R	2011 -9 0
2 ELLICE, W	1793 3	.5	SUAREZ, E	1855 -4 .5
3 FRANEK, M	1716 3	.5	BAURAC, D	1798 -3 .5
4 FABIJONAS, R	1525-15	0	KUHLMANN, S	1352 33 1
5 O'DELL, DW	1378 0	1	SMITH, JEFF	0 0 0
6 MIKULECKY, B	1404-27	0	HLOHOWSKYJ, I	996 41 1

07-FEB-08 FERMILAB**1.5 ST CHARLES BAKER****4.5**

ROUND 6

BD	RATINGS	SCORE	RATINGS	SCORE
1 GARZON, G	2259-25	0	NGUYEN, T	2226 25 1
2 SPIEGEL, L	1967-13	0	FREIDEL, JESSE	2006 20 1
3 SEDOV, A	1767 13	.5	FREIDEL, P	1983-13 .5
4 GAINES, I	1741-12	0	WANG, ANDREW	1807 18 1
5 DEGRAF, B	1512 3	.5	ALBERTS, W	1555 -3 .5
6 ANNIS, J	1471 3	.5	JANSSEN, G	1506 -3 .5

07-FEB-08 ST CHARLES CHESS CLUB**4.5 LUCENT TECH. TYROS****1.5**

ROUND 6

BD	RATINGS	SCORE	RATINGS	SCORE
1 MARSHALL, J	2229 15	1	ALLSBROOK, F	2108-15 0
2 WIEWEL, J	2037-19	0	DIAZ, P	2087 13 1
3 SPLINTER, J	2043 14	1	STOLTZ, B	1904 -9 0
4 SUITS, J	1612 36	1	GUIO, J	1852-24 0
5 VON HATTEN, J	1536 36	1	DOBROVOLNY, C	1779-24 0
6 SMITH, D	1432 13	.5	VAIL, M	1642-13 .5
7 GIBSON, B	1308 -7	0	HAHNE, D	1612 4 1
8 MCGEE, M	1442 -4	.5	BYRNE, M	1386 4 .5

12-FEB-08 LUCENT TECH. TYROS**2 DOWNERS GR CHESS CLUB****4**

ROUND 7

BD	RATINGS	SCORE	RATINGS	SCORE
1 ALLSBROOK, F	2093-18	0	KLUG, S	2170 18 1
2 DIAZ, P	2100-18	0	KALAVAGUNTA, S	2039 26 1
3 GUIO, J	1828 -8	0	EGERTON, J	2000 12 1
4 DOBROVOLNY, C	1755-13	0	WAKERLY, R	1793 20 1
5 BUCHNER, R	1663 17	1	CURRAN, T	1721-26 0
6 HAHNE, D	1616 15	1	GONZALES, T	1616-22 0
7 KARPIERZ, J	1300 -3	0	POTTS, K	1792 3 1

26-FEB-08 ARGONNE ROOKS**1.5 FERMILAB****4.5**

ROUND 7

BD	RATINGS	SCORE	RATINGS	SCORE
1 HILL, R	2002 -6	0	GARZON, G	2234 9 1
2 BAURAC, D	1795 -9	0	SPIEGEL, L	1954 9 1
3 DERIY, B	1502 35	1	GAINES, I	1729-24 0
4 GRUDZINSKI, J	1421 6	.5	DEGRAF, B	1515 -6 .5
5 HLOHOWSKYJ, I	1037 0	0	GOLOSSANOV, A	0 0 1
6 BERNSTEIN, J	0 0	0	DRENDEL, B	0 0 1

26-FEB-08 MOLEX**1.5 PAWNS****4.5**

ROUND 7

BD	RATINGS	SCORE	RATINGS	SCORE
1 REICH, T	1785 12	.5	LATIMER, E	1981 -8 .5
2 ZADEREJ, V	1628-12	0	ELLICE, W	1796 8 1
3 HENDRICKSON, B	1497-10	0	FRANEK, M	1719 7 1
4 DEICHMANN, E	1275 36	1	FABIJONAS, R	1510-16 0
5 RUFUS, B	1304-18	0	MIKULECKY, B	1377 12 1
6 MUELLER, R	1040 -6	0	O'DELL, DW	1378 4 1

26-FEB-08 BP CHICAGOLAND**1.5 ST CHARLES CHESS CLUB****3.5**

ROUND 7

BD	RATINGS	SCORE	RATINGS	SCORE
1 COULTER, D	(TO BE PLAYED)		MARSHALL, J	(TO BE PLAYED)
2 DENEEN, D	1463 -1	0	SPLINTER, J	2057 1 1
3 SUVARNAKANTI, R	1200 22	.5	MEISSEN, B	1788-22 .5
4 MANILA, M	1137 -2	0	SUITS, J	1648 2 1
5 HAYES, D	0 0	0	STOSKUS, A	1459 0 1
6 HERNANDEZ, F	956 0	1F	MC GEE, M	1438 0 0F

26-FEB-08 ST CHARLES BAKER**3.5 LUCENT TECH. DRAGONS****2.5**

ROUND 7

BD	RATINGS	SCORE	RATINGS	SCORE
1 NGUYEN, T	2251-12	.5	TEGEL, F	2057 5 .5
2 FREIDEL, JESSE	2026 -2	.5	LUDWIG, T	1998 1 .5
3 FREIDEL, P	1970 20	1	MARCOWKA, R	1932-13 0
4 WANG, ANDREW	1825 7	1	STAMM, V	1517 -3 0
5 ALBERTS, W	1552-25	0	EUSTACE, D	1508 17 1
6 JANSSEN, G	1503 -9	.5	KOMORAVOLU, K	1369 9 .5

East Division Unplayed Matches-----
Round 3 AMARS @ NORTHWESTERN

Round 6 AMA @ AMARS

Round 8 NORTHWESTERN @ AMARS

Round 9 AMARS @ HEDGEHOGS

10-JAN-08 HEDGEHOGS**6 CITADEL GROUP****0**

ROUND 6

BD	RATINGS	SCORE	RATINGS	SCORE
1 RAUCHMAN, M	2055 16	1	HAYHURST, W	1949-16 0
2 JASAITIS, A	2002 5	1	LE, DUC	1712 -7 0
3 SMITH, M	1949 4	1	MUHS, A	1561 -4 0
4 SEET, P	1830 21	1	ONG, K	1810-21 0
5 KRATKA, M	1603 20	1	SENSAT, J	1564-20 0
6 CHAVEZ, A	0 0	1	PROKOPOWICZ, P	0 0 0

*** EXHIBITION MATCH *****28-JAN-08 NORTHWESTERN CHESS CLUB 6 LOYOLA 0**

ROUND 6

BD	RATINGS	SCORE		RATINGS	SCORE
1 BAKSHI, A	2079	0 1	ACEVEDO, U	0 0	0
2 SMALLWOOD, J	1954	0 1	ADAMS, W	0 0	0
3 WANG, B	1771	0 1	STACKO, J	0 0	0
4 LU, D	1378	0 1	MIKOS, D	0 0	0
5 BLAZEK, G	1566	0 1	PLOTHER, J	0 0	0
6 MARTELL, J	0 0	0	ALEXANDER, J	0 0	1

06-FEB-08 NORTHWESTERN CHESS CLUB 2 HEDGEHOGS 4

ROUND 7

BD	RATINGS	SCORE		RATINGS	SCORE
1 BAKSHI, A	2079-17	0	FRANKLIN, D	2173 17	1
2 SMALLWOOD, J	1954 8	.5	RAUCHMAN, M	2071 -8	.5
3 ULLOM, G	1773 14	.5	JASAITIS, A	2007 -9	.5
4 WANG, B	1771-12	0	SMITH, M	1953 12	1
5 RODNYANSKY, S	1683 21	1	TAN, A	1657-21	0
6 LU, D	1378-14	0	MORAN, B	1512 14	1

07-FEB-08 CITADEL GROUP 3.5 AMA ROUGE SQUADRON 2.5

ROUND 7

BD	RATINGS	SCORE		RATINGS	SCORE
1 HAYHURST, W	1933-17	0	BROCK, B	2025 17	1
2 MUHS, A	1557 40	1	ALLEN, H	1910-40	0
3 ONG, K	1789-19	0	EAMAN, R	1848 19	1
4 LE, DUC	1705 1	.5	FRANK, M	1714 0	.5
5 SENSAT, J	1544 0	1	IRBY, L	0 0	0
6 PARRA, J	0 0	1	GRUDZINSKI, T	0 0	0

06-MAR-08 AMA TORNADO SNAKES 3.5 CITADEL GROUP 2.5

ROUND 8

BD	RATINGS	SCORE		RATINGS	SCORE
1 PETERSON, T	1496 35	1	LE, DUC	1706-35	0
2 FURTNER, F	1409 -5	0	ONG, K	1770 5	1
3 MASITI, J	1333 35	1	SENSAT, J	1544-35	0
4 MEYER-ABBOTT, B	1328 -8	0	MUHS, A	1597 8	1
5 MEYER, C	1240 0	.5	PROKOPOWICZ, P	0 0	.5
6 HARPER, M	0 0	1F		0 0	0F

25-FEB-08 NORTHWESTERN CHESS CLUB 6 AMA TORNADO SNAKES 0

ROUND 9

BD	RATINGS	SCORE		RATINGS	SCORE
1 GORODETSKIY, S	2063 2	1	PETERSON, T	1531 -2	0
2 SMALLWOOD, J	1962 2	1	FURTNER, F	1404 -2	0
3 ULLOM, G	1787 0	1	FARMER, B	0 0	0
4 LU, D	1364 23	1	MASITI, J	1368-23	0
5 LI, JEFF	0 0	1	HARPER, M	0 0	0
6 KRAVIK, S	1428 0	1	PATELLA, C	0 0	0

NAME	TEAM	W	L	D	RATING	NAME	TEAM	W	L	D	RATING
ACEVEDO, U	LOYLA	0	1	0	0000/1	DOWELL, E	EXCLB	4	1	1	1805
ADAMS, W	LOYLA	1	1	0	0000/2	DRENDEL, B	FERMI	1	3	0	0000/4
ALBERTS, W	BAKER	2	3	1	1527	DUONG, R	MKNGT	3	1	0	1567*
ALEXANDER, J	LOYLA	1	0	0	0000/0	DYCKZKOWSKI, R	PAWNS	0	0	2	1384
ALLEN, H	AMARS	0	2	0	1870	EAMAN, R	AMARS	3	1	0	1867
ALLSBROOK, F	TYROS	2	3	3	2075	EASTON, R	UOP	3	2	1	1850C
ALOP, J	DGCC	0	1	0	0000/1	EGERTON, J	DGCC	2	0	0	2012
ANNIS, J	FERMI	2	1	2	1474*	ELLICE, W	PAWNS	1	3	2	1804C
ANSARI, N	SKEWR	2	3	1	1588	ELLIOTT, T	NORTH	0	1	0	1330
AREVEDO, U	LOYLA	0	1	0	0000/1	ENGELLEN, M	NORTH	2	4	0	1606
AUBRY, B	NORTH	1	4	1	1580*	EUSTACE, D	DRGNS	6	1	0	1525C
BABINEC, J	MKNGT	3	1	0	1383*	FABIJONAS, R	PAWNS	0	6	1	1494T
BAKSHI, A	NWEST	1	1	2	2062	FARMER, B	AMATS	0	1	0	0000/1
BALES, R	BAKER	1	0	0	1406	FRANEK, M	PAWNS	2	0	5	1726D
BALICKI, J	MKNGT	2	1	1	1860C	FRANK, M	AMARS	1	2	1	1714C
BARBARI, N	DGCC	1	0	0	0000/1	FRANKLIN, D	HEDGE	2	0	1	2190
BAURAC, D	ROOKS	2	2	1	1786T	FREIDEL, JER	BAKER	3	0	0	1829
BENEDEK, R	ROOKS	2	1	0	2133T	FREIDEL, JESSE	BAKER	3	0	2	2024
BERBARI, N	DGCC	0	1	0	1500/1	FREIDEL, P	BAKER	5	0	1	1990
BERNSTEIN, B	HEDGE	0	1	0	1261	FRIDMAN, Y	MKNGT	5	1	0	2214C
BERNSTEIN, J	ROOKS	0	3	0	0000/2	FRISKE, T	FORKS	0	4	2	1996C
BIALON, D	SKEWR	2	3	1	1764*	FURTNER, F	AMATS	0	6	0	1402
BIRO, R	DGCC	0	0	0	1375	GAINES, I	FERMI	1	4	1	1705T
BLAZEK, G	NWEST	1	0	0	1566	GARZON, G	FERMI	3	2	1	2243
BOLDINGH, E	UOP	1	3	0	1869C	GIBSON, B	STCCC	0	1	0	1301
BREYER, A	DRGNS	0	2	1	1294	GOLOSSANOV, A	FERMI	1	1	0	1400/4
BROCK, B	AMARS	1	1	1	2042	GONCHAROFF, N	MKING	0	3	3	1586V
BRONFELD, A	EXCLB	0	3	0	1790	GONZALES, T	DGCC	3	2	0	1594
BROTSOS, J	EXCLB	1	3	0	1548T	GOODFRIEND, B	AMARS	2	0	0	1301
BUCHNER, R	TYROS	3	1	0	1680C	GORODETSKIY, S	NWEST	4	0	0	2065
BYRNE, M	TYROS	3	0	1	1390	GRANATA, M	SKEWR	4	2	1	1901*
CAMPBELL, G	DGCC	0	0	0	1000/0	GREER, J	BAKER	0	2	0	1378
CAPUTO, W	DGCC	0	1	0	1481	GRUDZINSKI, J	ROOKS	0	0	1	1427
CHAVEZ, A	HEDGE	1	1	2	1600/2	GRUDZINSKI, T	AMARS	0	1	0	1300/1
CHERKASSKY, G	MKNGT	4	0	2	1667*	GRYPARIS, J	MKING	1	1	0	1398C
CHRISTIAN, T	PAWNS	0	0	1	0000/2	GUIO, J	TYROS	0	2	0	1820C
CHUN, A	NWEST	0	0	1	800/1	HAHNE, D	TYROS	5	2	0	1631C
COULTER, D	BPCHI	0	3	1	1878	HAMELINK, N	FORKS	1	4	1	1759*
CURRAN, T	DGCC	3	1	1	1695	HARPER, M	AMATS	1	3	0	0000/2
CYGAN, J	MKING	5	1	0	1810	HART, V	NORTH	3	0	1	2013
DECMAN, S	ROOKS	0	1	0	1560D	HAYES, D	BPCHI	0	1	0	1346#
DEGRAF, B	FERMI	1	1	4	1509	HAYHURST, W	CITGR	1	2	2	1916
DEICHMANN, E	MOLEX	3	4	1	1311	HENDRICKSON, B	MOLEX	0	6	1	1487
DENEEN, D	BPCHI	0	1	0	1462	HERNANDEZ, F	BPCHI	0	3	0	956*
DERIY, B	ROOKS	3	0	0	1537*	HERR, T	BPCHI	0	2	0	0000/1
DIAZ, P	TYROS	5	2	0	2082D	HILL, R	ROOKS	1	3	1	1996D
DJORDJEVIC, V	STCCC	3	1	0	1625	HLOHOWSKYJ, I	ROOKS	3	2	0	1037*
DOBROVOLNY, C	TYROS	3	4	0	1742D	HORTON, D	MKING	1	0	0	1929
DORSKY, A	NWEST	0	1	0	0000/0	HUGHES, N	FORKS	2	3	1	1641C
DOSIBHATLA, D	FORKS	1	2	2	1585*	IRBY, L	AMARS	0	2	0	0000/4

/x - UNRATED; x = # OF RATED GAMES

- 5 TO 9 RATED GAMES

* - 10 TO 24 RATED GAMES

C - CENTURY CLUB MEMBER

D - DOUBLE CENTURION

T - TRIPLE CENTURION

Q - QUAD CENTURION

V - QUINTUPLE CENTURION

03-11-2008

NAME	TEAM	W	L	D	RATING	NAME	TEAM	W	L	D	RATING
JANSSEN, G	BAKER	1	2	3	1494	NALLATHAMBI, R	UOP	3	0	1	1594
JASAITIS, A	HEDGE	5	0	1	1998D	NGUYEN, T	BAKER	3	0	1	2239
JAWORSKA, O	NWEST	0	1	0	1269	NICK, X	FORKS	0	4	0	0000/4
JOSHI, B	MKING	1	2	0	1554*	O'DELL, DW	PAWNS	3	0	0	1382D
KACZYNSKI, W	SKEWR	0	5	0	0000/4	OLSEN, A	UOP	1	1	0	1460C
KALAVAGUNTA, S	DGCC	3	1	3	2065	ONG, K	CITGR	2	3	0	1775
KANNAPPAN, V	SKEWR	0	2	0	0000/2	PARRA, J	CITGR	2	0	0	1200/2
KARANDIKAR, S	MKNGT	3	2	1	1698	PATELLA, C	AMATS	0	1	0	0000/2
KARPIERZ, J	TYROS	0	1	0	1297	PEHAS, A	DRGNS	1	0	1	1852C
KLUG, S	DGCC	3	1	1	2188	PERSONS, J	FORKS	1	2	0	0000/2
KOMORAVOLU, K	DRGNS	3	0	2	1378	PETERSON, T	AMATS	1	4	1	1529*
KRAS, T	PAWNS	2	0	1	2166C	PIPARIA, J	MKING	6	0	1	1983
KRATKA, M	HEDGE	2	0	0	1623	PIOWAR, T	AMARS	0	1	0	1050/3
KRAVIK, S	NWEST	2	0	0	1428	PLOTHER, J	LOYLA	0	1	0	0000/0
KUCINAS, E	DGCC	0	0	0	1300/0	PLOTNER, J	LOYLA	0	1	0	0000/1
KUHLMANN, S	ROOKS	1	2	0	1385*	POTTS, K	DGCC	2	1	0	1795
KUNHIRAMAN, P	CITGR	1	0	0	1593#	POWERS, E	STCCC	0	1	0	1462
LATIMER, E	PAWNS	0	2	1	1973T	PROKOPOWICZ, P	CITGR	1	2	1	0000/4
LE, DUC	CITGR	3	4	1	1671	RABINOVICH, E	MKING	3	1	1	1531
LECHNICK, J	UOP	6	0	1	1781C	RAMANATHAN, N	ROOKS	1	4	0	0000/4
LEE, D	EXCLB	1	4	1	1906	RAMIREZ, A	UOP	0	2	0	0000/3
LEONG, G	UOP	1	2	2	1909C	RASO, P	BAKER	0	0	1	2063
LEVENSON, S	SKEWR	4	2	0	2057	RAUCHMAN, M	HEDGE	3	0	1	2063
LI, JEFF	NWEST	1	0	0	1600/0	REICH, T	MOLEX	0	6	1	1797
LU, D	NWEST	2	1	0	1387*	REID, C	EXCLB	2	3	1	1438D
LUDWIG, T	DRGNS	2	2	2	1999C	RINGENBERG, T	BPCHI	0	3	0	1446
MAMMA, M	BPCHI	0	1	0	0000/1	RODNYANSKY, S	NWEST	1	0	0	1704
MANEY, A	DGCC	1	0	3	1723	RUFUS, B	MOLEX	0	4	0	1286
MANILA, M	BPCHI	1	4	0	1135	SAJBEL, P	UOP	0	1	0	1764C
MARCOWKA, R	DRGNS	1	2	2	1919T	SANTIAGO, T	FORKS	4	2	0	1954C
MARSHALL, J	STCCC	3	1	1	2244	SCHILLER, A	DGCC	0	1	0	1352
MARTELL, J	NWEST	0	1	0	600/0	SCHULZ, N	DGCC	0	0	0	1508
MASITI, J	AMATS	1	3	0	1345*	SCHUPAK, M	AMATS	0	1	1	0000/0
MCGEE, M	STCCC	1	0	1	1438	SEDOV, A	FERMI	3	1	2	1780*
MCGOWAN, D	MOLEX	3	3	0	1492	SEET, P	HEDGE	3	0	0	1851
MCGUIRE, A	SKEWR	1	3	0	1768#	SENSAT, J	CITGR	2	3	2	1509
MEISSEN, B	STCCC	1	1	1	1766	SHENG, A	LOYLA	0	1	0	0000/0
MELNIKOV, I	MKING	3	2	1	2028C	SHEPARDSON, T	HEDGE	0	0	1	1553
MEYER, C	AMATS	2	1	1	1240#	SIEGEL, R	NORTH	3	2	0	1481C
MEYER-ABBOTT, B	AMATS	0	5	0	1320#	SIWEK, M	UOP	2	2	2	1938D
MICHALOPOULOS, G	CITGR	1	1	2	1314	SMALLWOOD, J	NWEST	4	1	1	1964
MICKLICH, F	UOP	1	3	0	1493D	SMITH, BR	DGCC	3	0	1	1610C
MIKOS, D	LOYLA	0	2	0	0000/2	SMITH, D	STCCC	2	1	1	1445
MIKULECKY, B	PAWNS	2	2	1	1389D	SMITH, JEFF	ROOKS	0	2	0	0000/2
MILLER, A	AMARS	0	0	1	1428	SMITH, M	HEDGE	4	1	1	1965
MORAN, B	HEDGE	1	0	0	1526	SOBSKI, A	NORTH	0	1	0	0000/5
MORRIS, R	MKNGT	4	0	1	2242C	SPIEGEL, L	FERMI	4	2	1	1963T
MOSSBRIDGE, A	UOP	1	0	1	1684	SPITZIG, M	PAWNS	0	4	0	1341
MUELLER, R	MOLEX	0	2	1	1034*	SPLINTER, J	STCCC	3	0	1	2058
MUHS, A	CITGR	3	4	1	1605	STACKO, J	LOYLA	0	1	1	0000/2

/x - UNRATED; x = # OF RATED GAMES

- 5 TO 9 RATED GAMES

* - 10 TO 24 RATED GAMES

C - CENTURY CLUB MEMBER

D - DOUBLE CENTURION

T - TRIPLE CENTURION

Q - QUAD CENTURION

V - QUINTUPLE CENTURION

03-11-2008

NAME	TEAM	W	L	D	RATING	NAME	TEAM	W	L	D	RATING
STAMM, V	DRGNS	2	1	1	1514T	VECANSKI, D	DGCC	2	0	1	1610
STILES, V	DGCC	0	0	0	1000/0	VIGANTS, A	NORTH	0	3	2	1579C
STOLTZ, B	TYROS	0	1	0	1895D	VOIGHT, T	BAKER	0	1	0	1213
STOSKUS, A	STCCC	2	0	2	1459	VON HATTEN, J	STCCC	1	1	1	1572
SUAREZ, E	ROOKS	1	2	1	1851	WAKERLY, R	DGCC	5	0	1	1813
SUERTH, F	EXCLB	1	1	1	1518D	WALKER, A	NORTH	0	4	0	1834
SUITS, J	STCCC	3	2	1	1650	WALLACH, C	MKING	4	2	1	1971C
SUVARNAKANTI, R	BPCHI	1	3	1	1222*	WANG, ANDREW	BAKER	3	0	1	1832
TAN, A	HEDGE	2	1	1	1636*	WANG, B	NWEST	4	1	0	1759
TEGEL, F	DRGNS	2	1	4	2062Q	WEITZ, R	EXCLB	1	2	1	1587D
THOMAS, J	DRGNS	1	3	0	1482D	WEZEMAN, H	DGCC	0	0	0	1400/0
THOMASON, A	MKNGT	0	0	1	1600/1	WIEWEL, J	STCCC	5	2	0	2018
THOMSON, J	MKNGT	4	2	0	2004C	YACOUT, A	ROOKS	0	0	1	1580
TULLIS, B	DGCC	0	0	0	744	YALAVARTHI, R	DGCC	1	0	0	1743
ULLOM, G	NWEST	2	1	2	1787	ZADEREJ, V	MOLEX	0	7	0	1616
VAIL, M	TYROS	5	0	1	1629	ZOELLNER, J	EXCLB	2	1	0	1336D
VALENTINE, T	DGCC	0	0	0	1232	ZUBIK, J	BPCHI	0	2	0	1186*
VAN MEER, J	UOP	0	0	1	1941						

/x - UNRATED; x = # OF RATED GAMES

- 5 TO 9 RATED GAMES

* - 10 TO 24 RATED GAMES

C - CENTURY CLUB MEMBER

D - DOUBLE CENTURION

T - TRIPLE CENTURION

Q - QUAD CENTURION

V - QUINTUPLE CENTURION

03-11-2008

A personal account of a simul

by Mack Smith

I had a memorable experience at a 60-game simultaneous chess exhibition given by former World Champion Anatoly Karpov in Glenview, IL Friday night, March 14th. I'm happy to report I managed to not only draw my game, but also missed an outright win on move 33. In the ensuing N+B endgame I maintained excellent winning chances, but time pressure (due to fewer players remaining late in the simul) hurt my play.

The event wasn't exactly what I had expected. Karpov was assisted with his simul by GM Alexander Onischuk (2006 US Chess Champion and rated about number 50 in the world) and GM Yuri Schulman (a professional chess coach here in IL). The three took turns playing moves throughout the evening, so Karpov's moves were (1,4,7, etc). Unfortunately after about 3 hours Karpov unceremoniously left, and I completed my game against the remaining two GM's.

The evening included a few odd occurrences including GM Schulman blundering on move 32 with Kf3 (which would have lost immediately to a knight fork), and then taking back his move as if nothing happened and playing Ne2! Incredibly a second move take-back occurred with 40. Ba3 when Bb2 was initially played. Finally, towards the end of the evening the remaining players were forced to play G/10 with 5 or 10 seconds added to the clock after each move. During this phase of the game I heard both Onischuk and Schulman kibitzing in Russian over my game right in front of me. Fortunately it didn't change the result.

Of the 60 games played only 1 player beat the Karpov trio. I spoke with her after the event. She was a young FIDE master from Belarus who back when she was a teenager was ranked number 8 in the world in the Women's Juniors bracket (18 and under). In addition there were 4 other draws that night while the Karpov team won the remaining 54 games.

Below you'll find the annotated score of my game

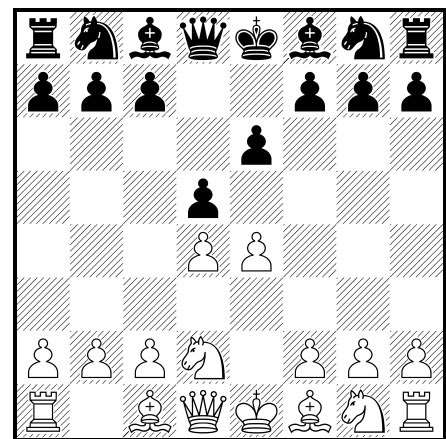
Anatoly Karpov – Mack Smith

Karpov Simul w/GMs Onischuk and Schulman
Wyndham Hotel – Glenview, IL, March 14, 2008

[Notes by Mack Smith]

This game was played at a 60-board simul given by former World Chess Champion Anatoly Karpov along with GM Alexander Onischuk, 2006 US Chess Champion and GM Yuri Schulman. Karpov played first, then Onischuk and then Schulman alternating moves during the game.

1.e4 e6 2.d4 d5 3.Nd2



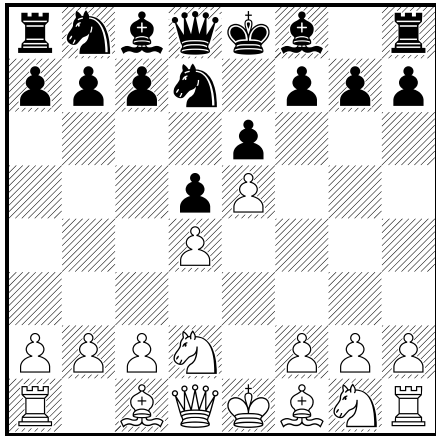
I was familiar with Karpov's games, so his choice of the Tarrasch variation of the French came as no surprise here. From my database of nearly 3000 games, I found that his tournament record was 15-0 with 12 draws with this system.

3...Nf6

More typical is 3...c5, but this less explored line can lead to active play for black in the event white plays 4. e5 Nfd7 5. Bd3.

5. f4 leads to a cramped, but defensible position where black engages in a lot of quiet maneuvering – something I would have been comfortable to do.

4.e5 Nfd7

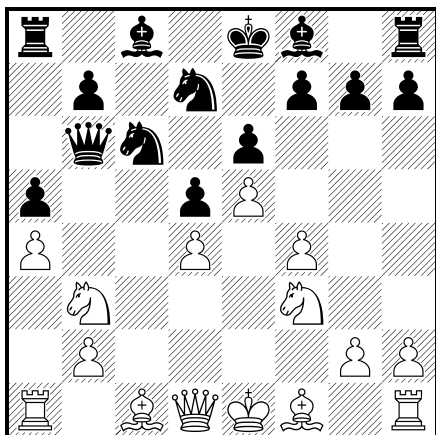


5.f4 This leads to a very closed position with not very much theory behind it which is what I was striving for.

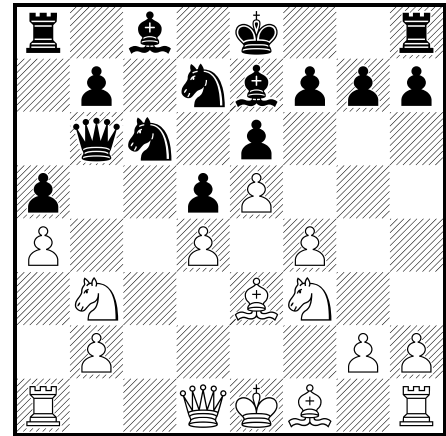
The soundness of this decision was only confirmed in a chat I had with the event organizer after the game who knew Karpov personally. He said that Karpov has near perfect recall of all his major games even from 40 years ago. I also learned that he travels around the world without a personal phonebook since he never forgets any phone numbers.

5.Bd3 is a more ambitious way to tackle black's setup. It can lead to quite sharp play.

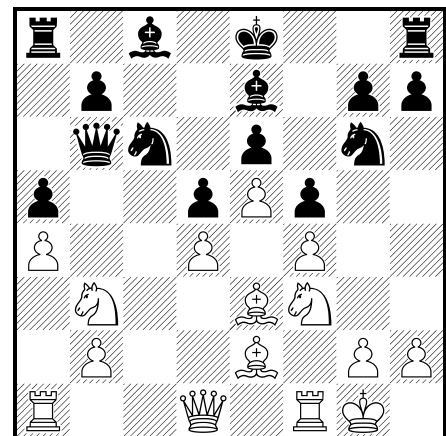
5...c5 6.Ngf3 Nc6 7.c3 cxd4 8.cxd4 Qb6 9.Nb3 a5 10.a4



10...Be7 Fritz suggests Bb4+ with equality. I think Be7 is playable. **11.Be3**



11...f5 A major decision. Objectively f6 was probably better. **12.Be2** Rc1, Bd3 and Bb5 all seemed like more active choices than this move. **12...Nf8 13.0-0 Ng6**

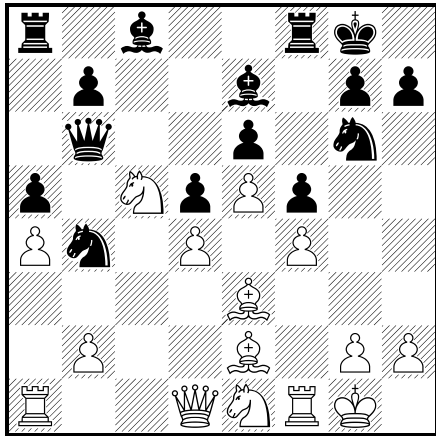


14.Ne1

Nc5 immediately is better. This strong outpost for the knight attacks the base of black's pawn chain. If black plays Bxc5 white not only gets black's good bishop, but also the d4 square for his knight.

14...Nb4 Countering white's knight move, but 0-0 was safer.

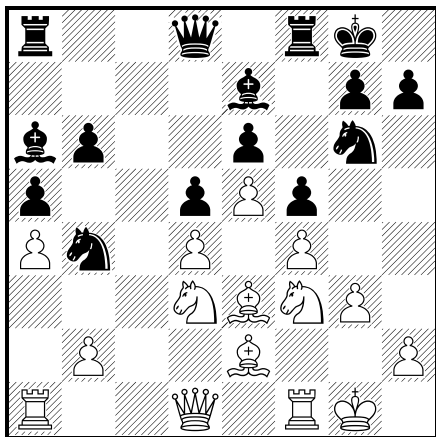
15.Nc5 0-0



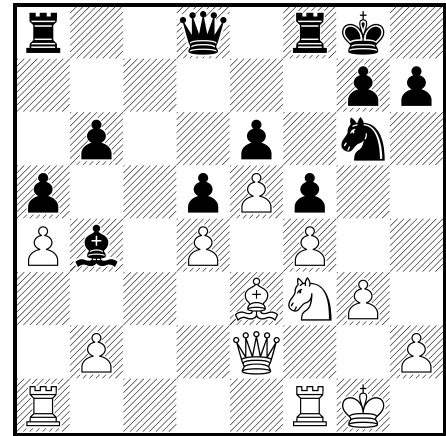
16.Nf3 Having too many cooks in the kitchen begins to become apparent. Karpov undoes what the other GM has played.

16...Qd8 This move sets up the move b6, kicking out the annoying knight and also allowing black to play Ba6 exchanging off his bad bishop.

17.g3 b6 18.Nd3 Ba6

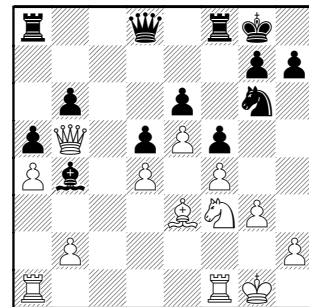


19.Nxb4 Bxe2 20.Qxe2 Bxb4



21.h4 I was most concerned about 21. Qb5 here, but black still has resources.

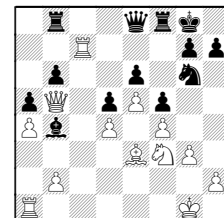
21.Qb5



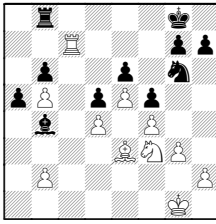
Black has a major choice here to go in for active or passive defense.

21...Qe8! (21...Rb8 22.Rac1

22.Rfc1 Qe8 23.Rc7

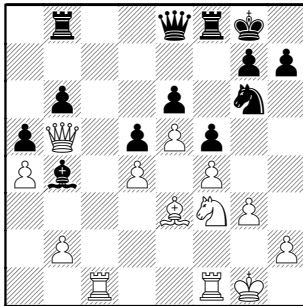


23...Qxb5 24.axb5 Rfc8 25.Rac1 Rxc7 26.Rxc7

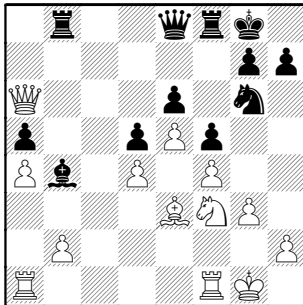


26...Be7 27.h4 h5

22...Qe8

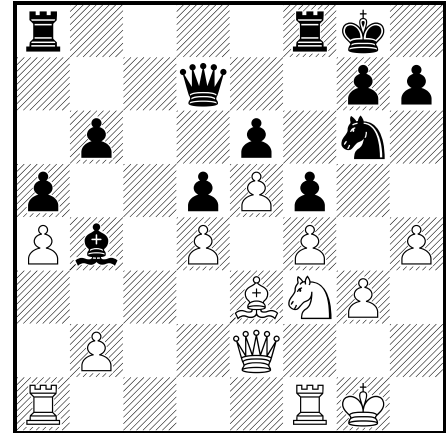


23.Qxe8 Rfxe8 24.Rc6) 22.Qxb6 Rb8 23.Qa6



23...Rf7 24.Qe2 Rfb7 ...and white is up a pawn, but his b-pawn is extremely weak.

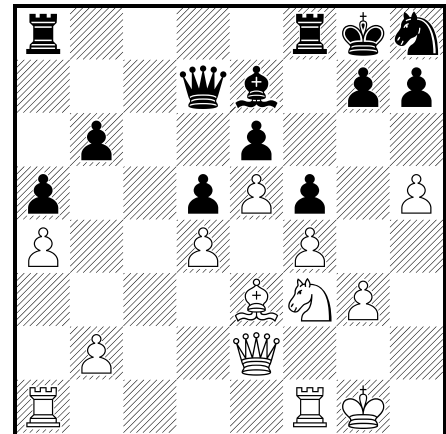
21...Qd7 Now Qb5 is not as effective.



22.h5?! Better still was Qb5, but this move creates an important weakness at g4.

22...Nh8! This strange looking move allows black to reroute his knight to g4 via Nf7,Nh6. Fritz now shows black with at least full equality.

23.Nh4 Be7 24.Nf3



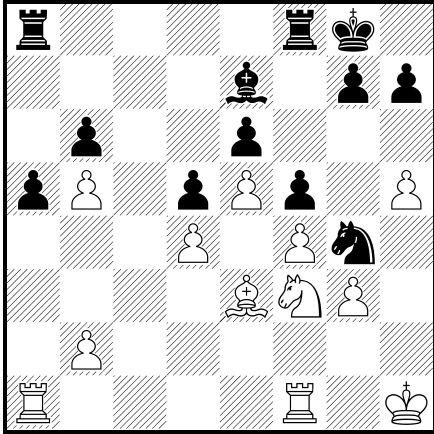
24...Nf7

Probably here and the next move Rfc8 is more accurate. After this move however, all three GM's passed after I made this move. When Schulman came around a second time I pointed out that someone had to play.

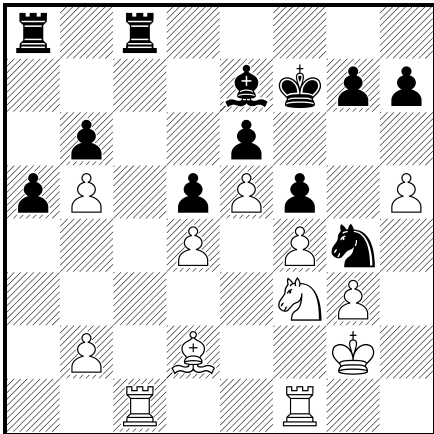
25.Kh1 Nh6 26.Qb5 White finally plays Qb5 which

should have been played instead of the last few moves.

26...Qxb5 27.axb5 Ng4



28.Bd2 Rfc8 29.Rac1 Kf7 30.Kg2

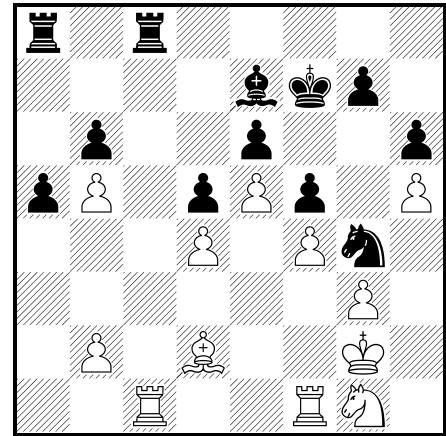


30...h6?

Definitely an error. This move leaves blacks g7 pawn weak. In the ensuing ending this weak pawn saves white.

I should have continued my march to c-file.

31.Ng1?

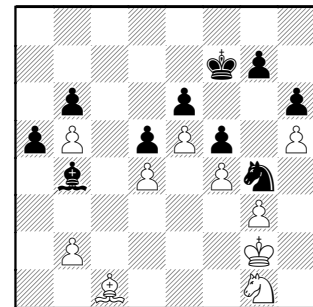


The most serious error in the game. White should have tried Rc6.

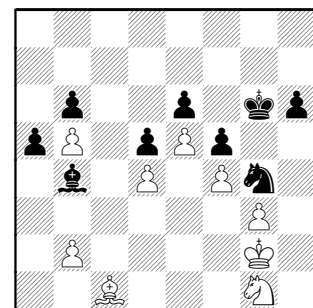
31...Ke8?!

Much stronger was 31...Bb4 which Fritz rates -1.16!. This compels the exchange of rooks and black's strong knight gets into the white position.

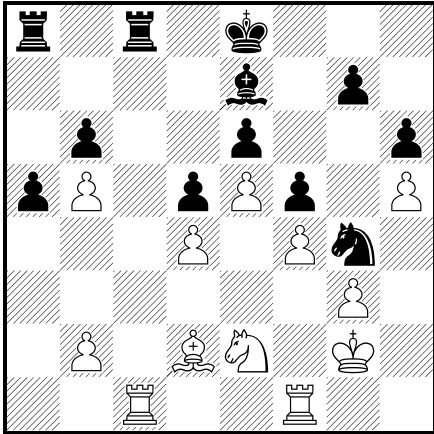
31...Bb4 32.Rxc8 Rxc8 33.Rc1 Rxc1 34.Bxc1



34...g6 35.hxg6+ Kxg6

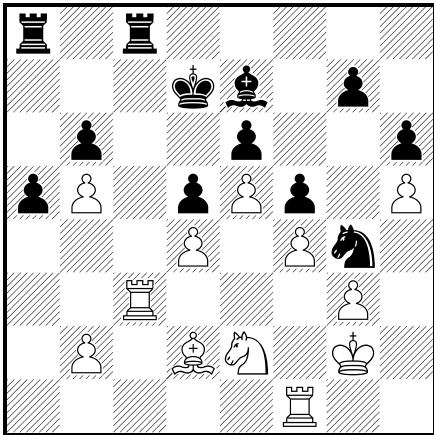


32.Ne2



Here was an incredible moment. **GM Schulman actually picked up his king and played 32. Kf3??** which would have lost decisively to Nh2+ winning the exchange. **He then took his king move back** and played Ne2! Staring at Schulman I shook my head in disbelief. He refrained from making eye contract with me and promptly moved to the next board as if nothing happened.

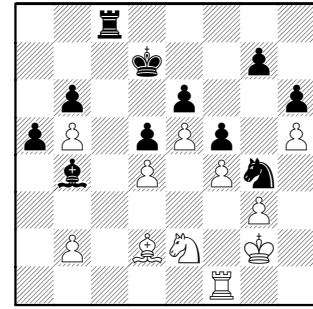
32...Kd7 33.Rc3?



Rfd1 would have held the position. White's move should have cost him the game.

33...Rxc3? Missing the decisive 33...Bb4.

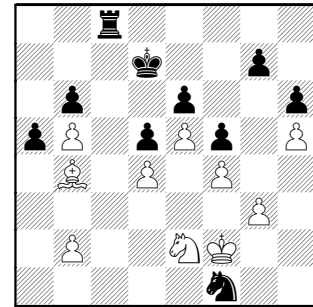
33...Bb4 I found this move in the bar afterwards, winning.
34.Rxc8 Rxc8



35.Bxb4

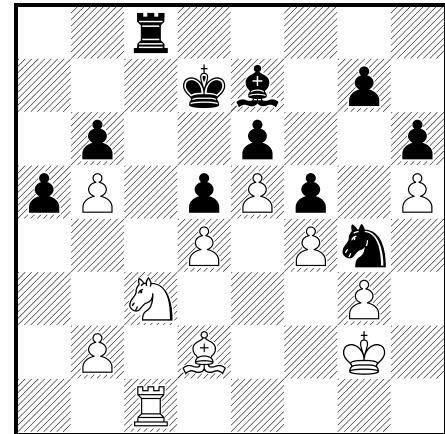
(35.Bc1 Rc2 36.Kf3 Nh2+)

35...Ne3+ 36.Kf2 Nxf1

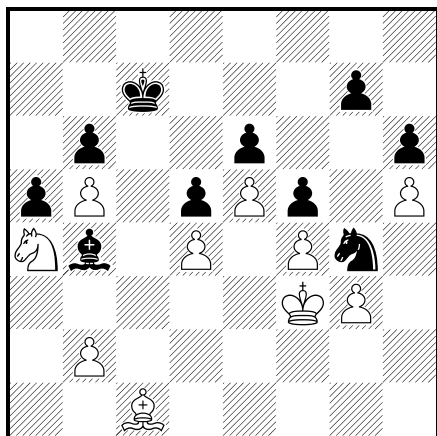


37.Be1 Nh2

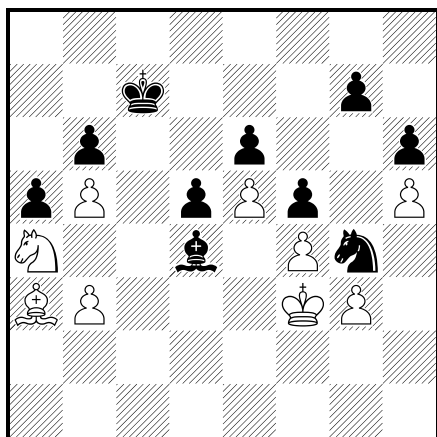
34.Nxc3 Rc8 35.Rc1



35...Bb4 36.Na4 Rxc1 37.Bxc1 Kc7 38.Kf3



38...Be1 39.b3 Bf2 40.Ba3 Bxd4

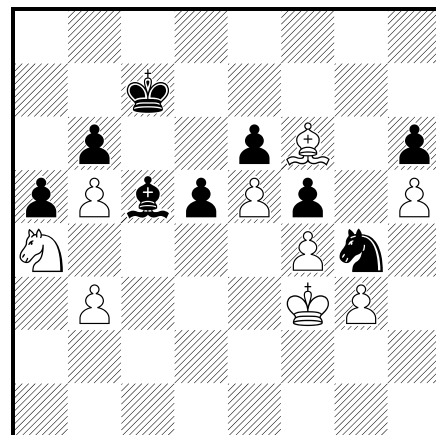


From here on my play suffered because I was forced to move very quickly since there were fewer games. **A little later all contestants were forced to play on a clock with G/10** with 5 or 10 seconds added for each move. Also it was around move 40 Karpov unceremoniously left the simul leaving the two other GM's to complete all the games.

41.Bf8 And now the consequences of 30...h6 become apparent. White can hold the balance taking the g-pawn.

41...Bg1? Kd7 would have been much better. If white takes the g-pawn black can continue to move his king to the kingside and trap the bishop.

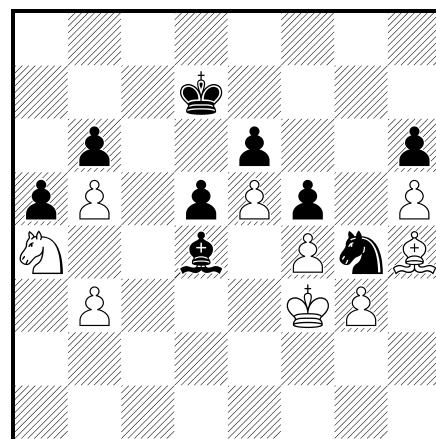
42.Bxg7 Bc5 43.Bf6



43...Kd7

Not 43...Nf6 44. fe Kd7 45. Nc5! and black his helpless against the two passed pawns.

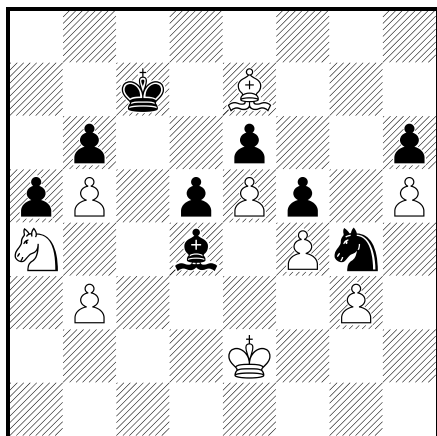
44.Bh4 Bd4



Now both of white's pieces are trapped!

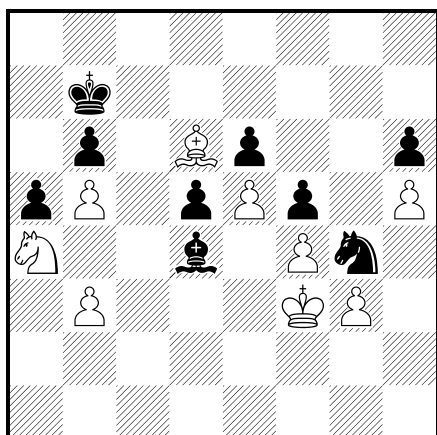
45.Ke2 Kc7? Nf2 was much better.

46.Be7!



Of course! Now the bishop gets back in the game.

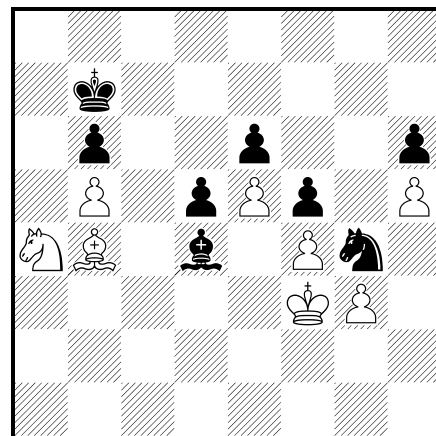
46...Be3 47.Bd6+ Kb7 48.Kf3 Bd4



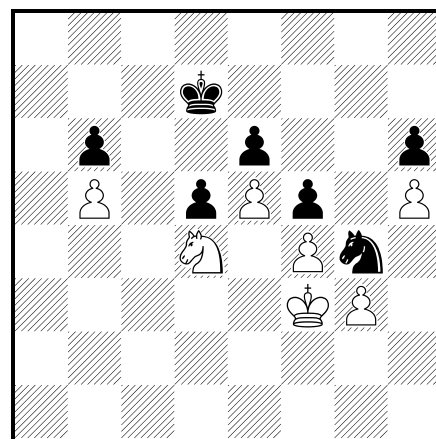
49.b4!

White exchanges off his b-pawn which could have been a target for the knight.

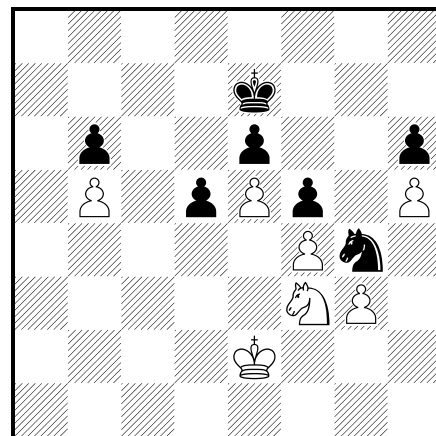
49...axb4 50.Bxb4



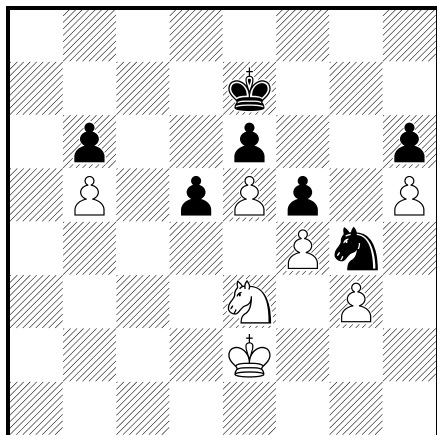
50...Ba1 Again, Kc7 was better. Now the games heads to draw. **51.Bc3 Bxc3 52.Nxc3 Kc7 53.Ne2 Kd7 54.Nd4**



54...Ke7 55.Ke2 Kd7 56.Nf3 Ke7

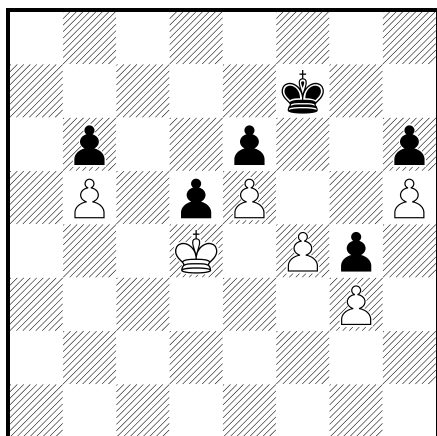


57.Nh4 Kf7 58.Ng6 Ke8 59.Nh4 Ke7 60.Ng2 Ke8
61.Ne3 Ke7



Simpliest. White has no means of entering the black position if he takes the knight at g4.

62.Kf3 Nh2+ 63.Kg2 Ng4 64.Nxg4 [draws] fxg4
65.Kf2 Kf7 66.Ke3 Ke7 67.Kd4 Kf7



Neither side can break through.

1/2-1/2

Congrats and thanks to Mack ! Another CICL player participated (although with less success) and we will present that next month.

**RESERVE THE
FOLLOWING
POST-SEASON DATES NOW !!!**

Spring Business Meeting

April 16th

Lucent – Naperville

Playoffs &

Another event FOR ALL !

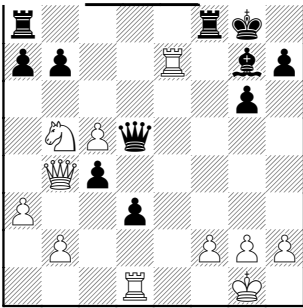
May 10th

(location TBA)

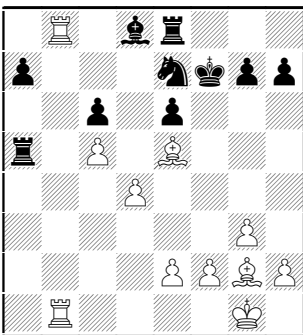
Awards Banquet

June 6th

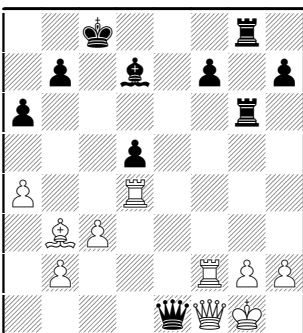
Here's two pages of challenges – solve 'em and you're ready for **Playoff Saturday, May 10th**

PROBLEM 1.

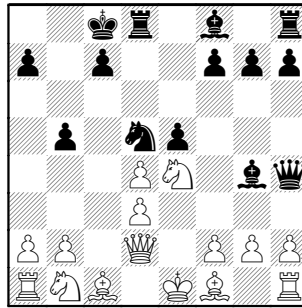
Black to move

PROBLEM 2.

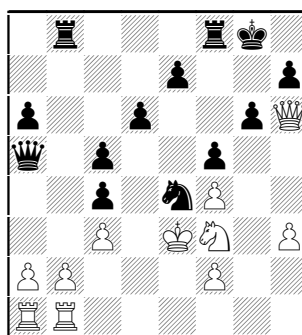
White to move

PROBLEM 3.

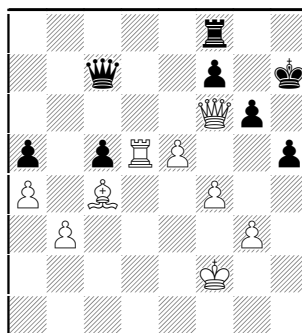
Black to move

PROBLEM 4.

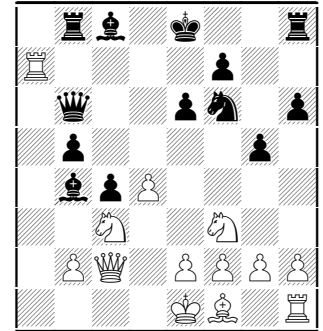
Black to move

PROBLEM 5.

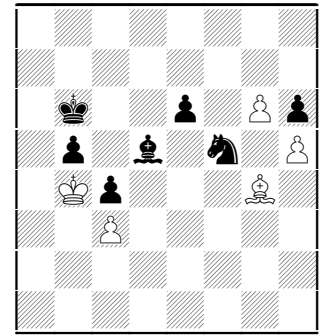
Black to move

PROBLEM 6.

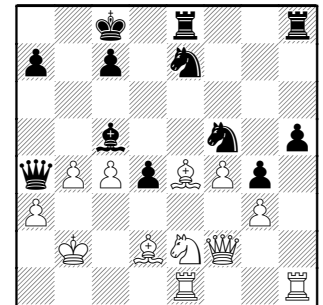
White to move

PROBLEM 7.

White to move

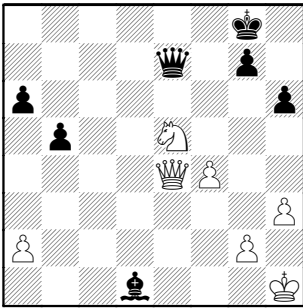
PROBLEM 8.

Black to move

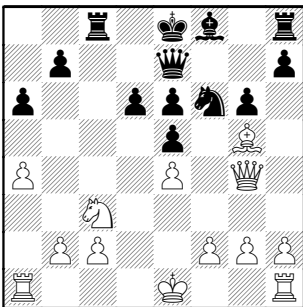
PROBLEM 9.

Black to move

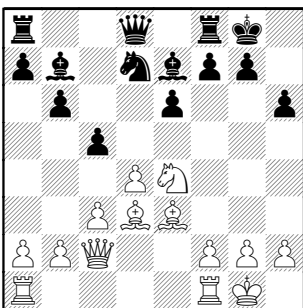
You surely don't *need* the solutions, but you may want to verify some analysis **beginning page 41**

PROBLEM 10.

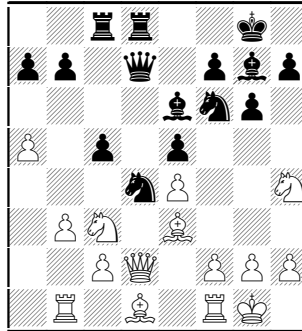
White to move

PROBLEM 11.

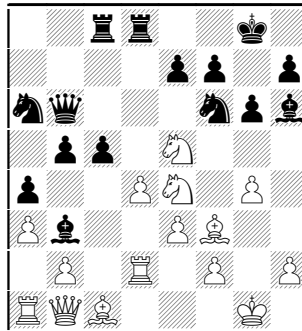
White to move

PROBLEM 12.

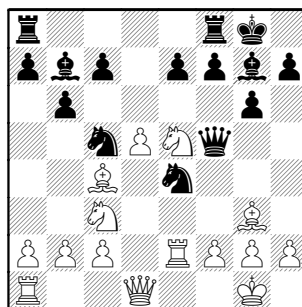
Black to move

PROBLEM 13.

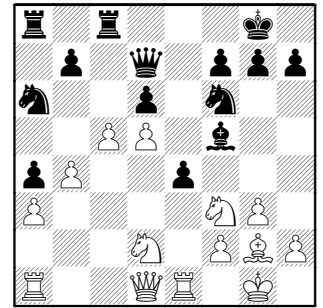
Black to move

PROBLEM 14.

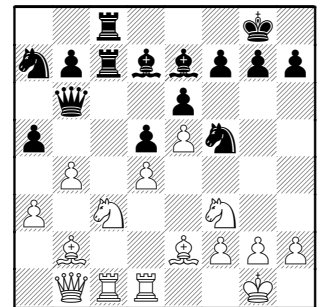
White to move

PROBLEM 15.

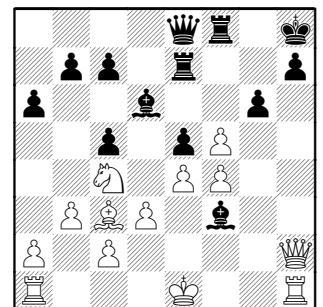
White to move

PROBLEM 16.

White to move

PROBLEM 17.

White to move

PROBLEM 18.

White to move

Unorthodox. Risky. Lucky. Uncompromising. These are a few words we'll encounter in his description.

How about "Tough to beat", "Consistent", "Creative" ?

There is that style of chessplayer which has no desire to copy long lines of book moves, but just "play chess" – weaken the opponent's position, strengthen the friendly forces, pounce on the tactics that are offered.

GM Bent Larsen made a career of 1. b3. GM Tony Miles loved 1..b6 against any White move and he beat GM Anatoly Karpov with a spirited defense beginning 1..a6 . Grob was immortalized by his work on 1. g4. The list goes on, but there's a common trait: interesting chess, win or lose, you know you're where no player has been before !

A couple of CICL players quickly come to mind. Mike Stevanovic's constant use of 1. Nc3. Teddy Santiago's small-center defense, played with Black or White ! And consistently winning !

This article features and gives tribute to the many years of challenge provided by the mind of **Teddy Santiago**, currently with the **Walgreen Forks**.

Your roving reporter well remembers his first introduction to the first phase of what was quickly dubbed "The Phillippine Connection" – the team first formed at **Grolier/World Book** in the late 1980s. Well-known members there included Teddy, Burt Gazmen, Ely Sollano, and Arnulfo Benesa. An away game at their site was truly a team

challenge – you quickly learned that a cheap win wasn't in the offing; each member would have to play their best chess to even stand a chance. The atmosphere didn't help much – a lung-blocking cloud of cigarette smoke and the stench of cheap pizza added to the desire to leave soon.

But the days came when Grolier disbanded and the North Division alumni teams were in need of players. The gang became teammates and along with that a new love for the game. You see, it wasn't just coffeehouse chess, but a real love of the game that kept them playing – arriving early for matches to play skittles (not just to warm up), and win or lose, right back at it until late at night. There were rumors of arriving home after 2AM – late chess and a long drive home !



Teddy Santiago in battle at the 2007 Playoffs. His Walgreen Fork captain, Tom Friske, looks on rather baffled.

It became almost obsessive – stories were told of late night sessions during the week at each other's homes.

But the most fun we ever had was an all-nighter AFTER the season's Awards Banquet. We were cleaning up and Burt drops in with "Hey, Tom, we need a fourth for skittles!" OK, sure, but where would one play past 11 PM ? Well, up at the empty oasis over the tollway, of course !

The **Excalibur** captain began to realize these guys didn't need to do all that late-night driving – most were working or living close to downtown and the East Division could use some players! Thus began the last version of the super-team **Alumni Aces** – with the impressive bunching of five players over 2000 !

Finally, a couple seasons back, the alumni rules were changed and the ensuing break-up of that team. But one player still wanted to play chess with the CICL. Teddy volunteered his services with the fledgling Walgreen team and led them to the playoff promised land.

The following pages of annotated games were the work of three separate players. Oddly, three of the four games arrived at the Editor's desk in back-to-back days. The last was a recent effort which amply showed a side of Teddy often unappreciated – specifically, his ability to positionally pressure your weaknesses until it's too much to bear.

Unorthodox? Sometimes. Risky? He wins often enough that you learn what "risk" is. Lucky? "Luck is with the better player". Uncompromising ? Yes, so enjoy....

A. Jasaitis (2084) –
T. Santiago (1992)

[B00]

Aces@Hedgehogs

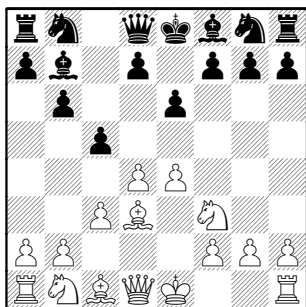
12-7-2005

[Notes by Tony Jasaitis]

1.e4 b6

Something you can always count on from Teddy, besides a swashbuckling attack: a fianchetto.

2.d4 Bb7 3.Bd3 e6 4.Nf3 c5 5.c3

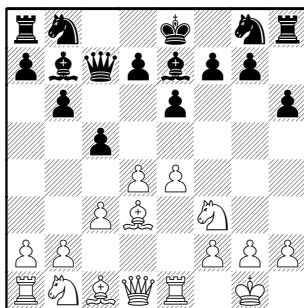


5...h6 For anyone else, I would give this a "?" .

This is not a clueless duffer's h-pawn move, but how Teddy whips up swashbuckling attacks as soon as he catches you napping (and how many of us don't nap?). For Teddy, this is a hallmark style, although h5 at some point would be more typical of him, as on the 7th move in Jasaitis - Santiago 2002 .

So like with my own often offbeat openings which are shunned by GM's, this pot is not going to call the kettle black. If you can have fun bagging games your own way at the level of opposition you face, go for it!

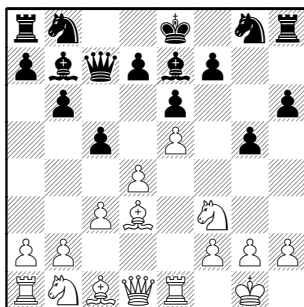
6.0–0 Qc7 7.Re1 Be7



8.e5

Not a move one would normally make, increasing the scope of Black's QB, and with Black being able to theoretically attack e5 with two pawns, but leaving Black's KN w/o any squares to move to for a while was too attractive. And e4 will be a great invasion point for White's pieces; Black will be welcome to trade off his best piece there if he wants to.

8...g5



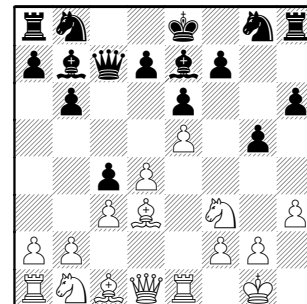
There it is already! Of course it's too early for a flank attack, with the center unsecured, but Teddy throws down the gauntlet, and you have to really sweat and eat up precious time on the clock to deal with it, maybe make a misjudgment to fuel the fire...

9.h3

So here we go - is this a misjudgment or not? One normally shouldn't be creating targets for the attack. But I judged Black to be too poorly positioned for further attacking that I could afford this. Besides, I'm a swashbuckler too, and I've got White,

and dude, you're not going to take my attacking privileges away from me by pushing my Knight back, so there! Let's see what you've got!

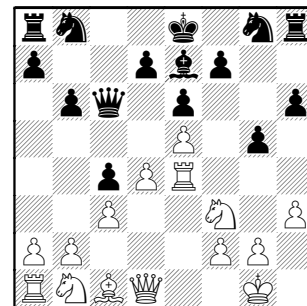
9...c4



Not sure what to think about this move. It does reduce ways White can open up the position, which is how to deal with a flank attack. On the other hand, I'm happy to trade off Black' best piece, and since Black isn't likely to castle K-side, my B's best days are probably over.

Oddly enough, Fritz prefers to retreat to e2 or f1. Maybe it's more defensive-minded like perhaps I should have been.

10.Be4 Bxe4 11.Rxe4 Qc6



Here Fritz suggests 11...d5, which would either close the position (for greater safety) if White doesn't capture en-passant, or get rid of the thorn on e5 if he does.

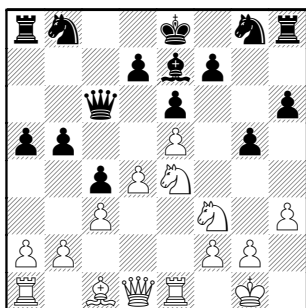
Fritz's evaluation of the position was +1.0 until my Be4, ...d5 would have dipped it down to +0.5, now it's back to over +1.0 again.

12.Re1 b5

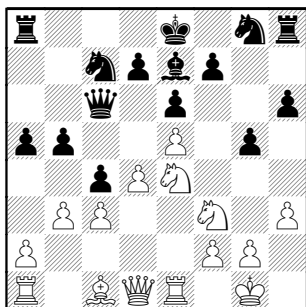
I'm not sure how Black should proceed for the next few moves, so I won't say anything, except that I think Black should avoid expanding on both wings. Where will his King run when the center gets pried open? And how will he get his K-side attack going without castling Q-side? Well, with Teddy all things are possible...

13.Nbd2 a5

Fritz actually likes h5 best here. In the meantime, White just develops, "knowing" Black can't dare to fight back in the center and air-condition the position any further. Or can he?

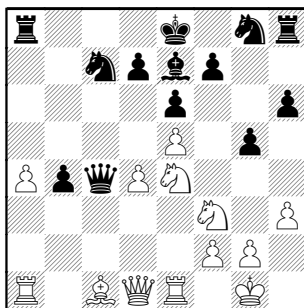
14.Ne4**14...Na6 15.b3**

Seems like enough development. How about opening up some lines now to finish Black off, huh?

15...Nc7

16.a4 Rip it all open, yeah!

16...b4 17.bxc4 Qxc4 18.cxb4 axb4

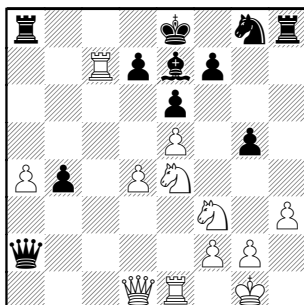


19.Bxg5 Smack em! Teddy's got his hallmark, I've got mine - sac a piece (even if it's not strictly sound)!

The idea is to exploit the bad position of the Black Queen with threats on d6 and c7. Who cares if the Black Rook gets "activated"? What's it going to do with nothing to support its pressure? (so I think).

Fritz prefers the sedate Nfd2, but does not seriously reduce White's evaluation for my move, rating the position as about +1.0 either way.

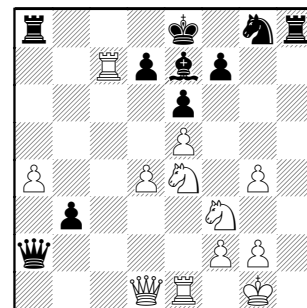
19...hgx5 20.Rc1 Qa2 21.Rxc7



Alright, mission is getting accomplished - I'm starting to penetrate his airy undeveloped position, and what's he got besides a rook biting on granite?

21...g4 Huh, what? Oh, just a mosquito, swat it...

22.hxg4 b3

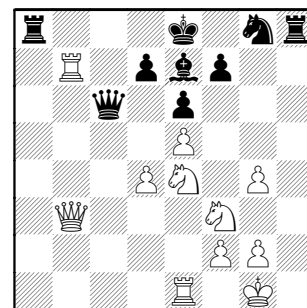


More mosquitoes... This one could have a big bite to it if it sticks around...

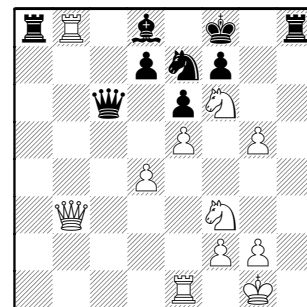
23.Rb7

Fritz prefers Nc3, but what, me move a piece backwards? This does plenty to push Black backwards, since he can't afford to trade major pieces.

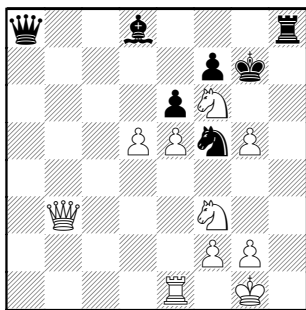
23...Qxa4 24.Qxb3 Qc6



25.Rb8+ Bd8 26.g5 Ne7 27.Nf6+ Kf8



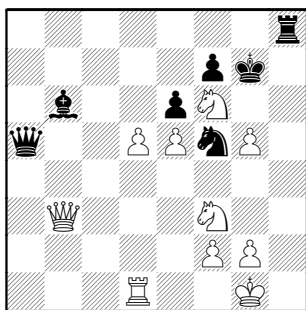
28.Rxa8 Qxa8 29.Nxd7+ Kg7 30.Nf6 Nf5 31.d5



Sure looks like White is sitting nice and cozy. Let's break more of those defenses down... What can go wrong anymore?

31...Qa5 Hmm, ...Nd4! is a threatened cheap shot, undermining protection of the Rook. Let's prevent that. About time it found a stronger square anyway.

32.Rd1 Bb6



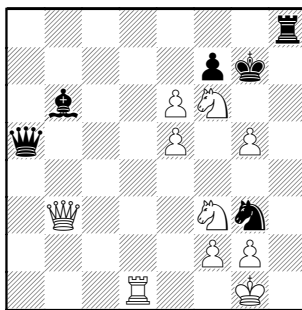
Whoa! What's this? Black's pieces have crawled out of their crypts! All of a sudden a mate in 2 is possible: Ng3 followed by Rh1. The hallmark Santiago onslaught is in full bloom!

33.dxe6

This game was played so long ago I don't remember whether I saw the threat yet; I'm sure not playing like I did!

Fritz recommends the shocking **33.g4**, which makes the blocking Nh5+ possible. I doubt I would have found that even if I did see what's coming.

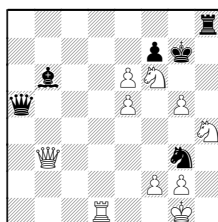
33...Ng3



34.Nh2 Gotta do something about mate.

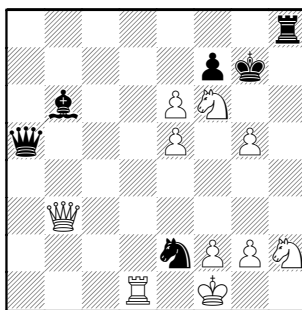
Now Fritz's evaluation drops from +3 to +1. Things are getting pretty loose for White!

Fritz highlighted **34.Nh4**



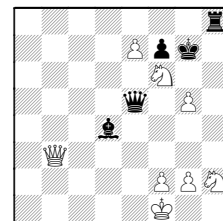
34...Ne2+ (34...Rxh4 35.Qxg3)
35.Kf1 Rxh4 (35...Nc3)

34...Ne2+ 35.Kf1

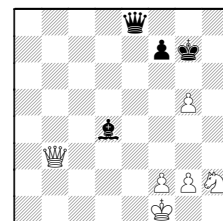


35...Qxe5 A natural move to continue the attack, but now it goes downhill.

Black could have chosen an uphill endgame down two pawns but with all of them on the same side of the board (therefore some drawing chances) with: **35...Nd4 36.Rxd4 Bxd4 37.e7 Qxe5**



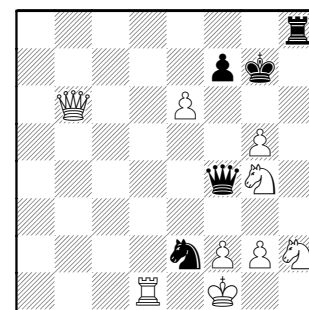
38.e8Q Rxe8 39.Nxe8+ Qxe8



36.Nfg4

Black is again the one with an overly loose position, and Fritz's evaluation has shot up to +4, though it didn't feel like it to me for a while yet!

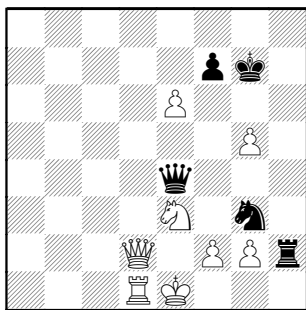
36...Qf4 37.Qxb6



37...Ng3+ 38.Ke1

Fritz likes **38.Kg1 Ne2+** **39.Kh1** better by 2 whole points, but I had enough of being around that rook!

38...Qe4+ **39.Qe3 Qb4+** **40.Qd2 Qe4+** **41.Ne3 Rxh2**



42.fxg3 This was good enough, as Black's flag fell.

Fritz calculates a +17 crush starting with 42 Qb2+ Kh7 43 Rd8, but who's going to choose that facing Rh1+ and the clock ticking?

Whew!! I miss having these rumbles with Teddy, who is no longer in my division.

1-0

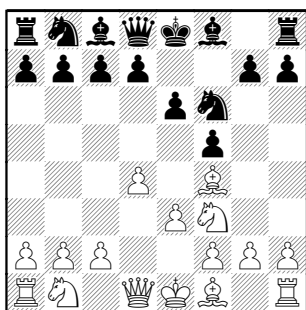
**Santiago, Teddy –
Jasaitis, Tony**

[A80]

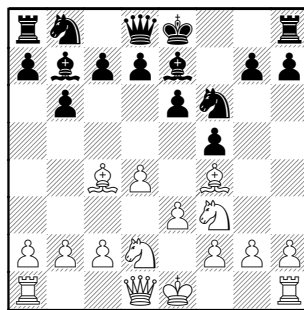
Aces-Bank of America, May 1998

[Notes by Tony Jasaitis]

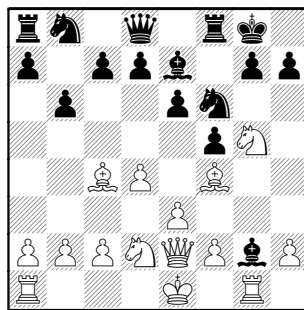
1.d4 f5 2.Nf3 Nf6 3.Bf4 e6 4.e3



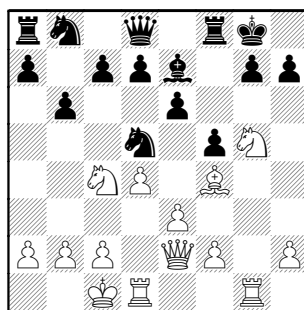
4...b6 5.Nbd2 Bb7 6.Bc4 Be7



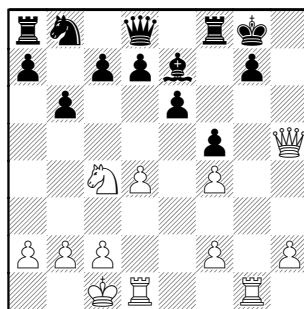
7.Qe2 0-0 8.Ng5 Bxg2 9.Rg1



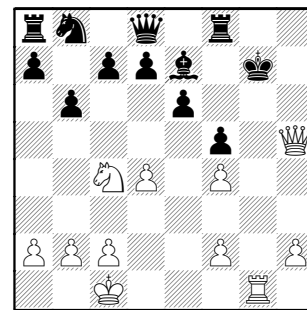
9...Bd5 10.0-0-0 Bxc4 11.Nxc4 Nd5



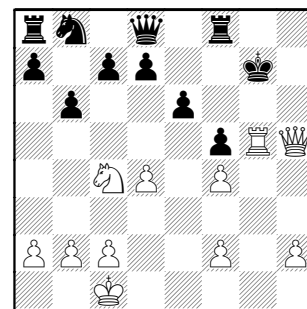
**12.Nxh7! Nxf4 13.exf4 Kxh7
14.Qh5+ Kg8**



15.Rxg7+!! Kxg7 16.Rg1+

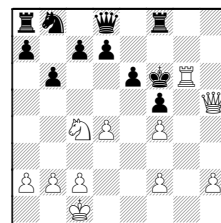


**16...Bg5 [16...Kf6 17.Qg6#]
17.Rxg5+**



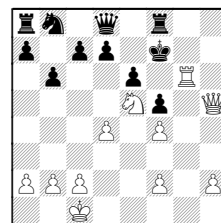
17...Qxg5

Mates result after 17...Kf6 18.Rg6+



18...Kf7 (18...Ke7 19.Rg7+ Kf6
20.Qg6#) Now best is 19.Rh6+

19.Ne5+

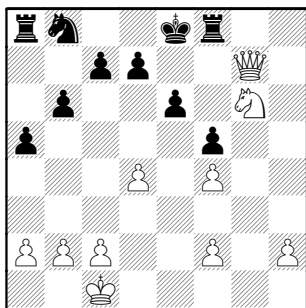


19...Ke7 (19...Ke8 20.Rxe6#)

20.Rg7+ Kd6

19...Ke7 20.Rh7+ Kf6 21.Qg5#

18.Qxg5+ Kf7 19.Ne5+ Ke8 20.Qg7 a5 21.Ng6



White has several mates. 1-0

Sanitago, Teddy –
Morris, Robert
Forks-Excaliburs, 2008

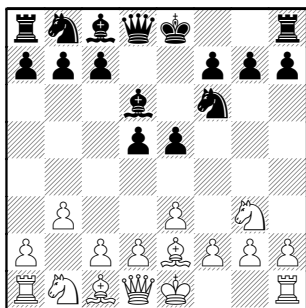
[A00]

[Notes by Rob Morris]

1.e3 d5 2.Ne2 e5

Presumably white is trying to avoid “book” openings, however there are better ways to achieve that particular goal.

3.Ng3 Nf6 4.Be2 Bd6 5.b3

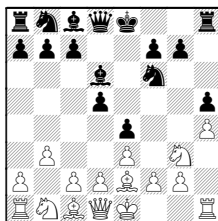


White's neglect of the center is striking and suggests some form of punishment should be forthcoming. The odd deployment of his king's knight AND the fact that its' best retreat square is cut-off by the light

square bishop are both provocative. Combined they beg black to play the thematic :

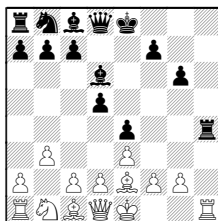
5...h5 6.Bxh5?

A) Probably better was 6.h4 e4



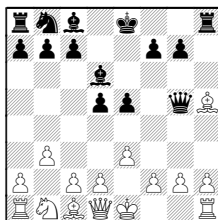
with idea Bxg3 and attack the weak g3-Pawn OR

if 7.Nxh5 Nxh5 8.Bxh5 g6 9.Be2 Rxh4

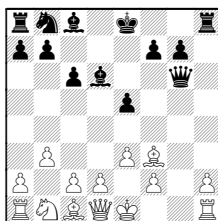


with uncontested control of the h-file.

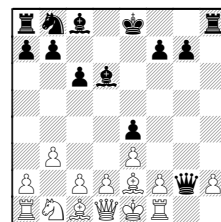
B) It should also be pointed out that 6.Nxh5 Nxh5 7.Bxh5 Qg5



8.Be2 Qxg2 9.Bf3 Qg6 10.Bxd5 c6 11.Bf3

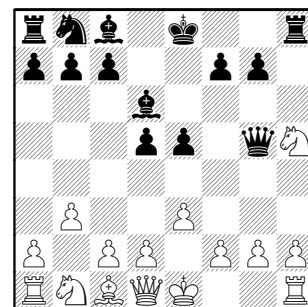


11...e4 12.Be2 Qg2 13.Rf1

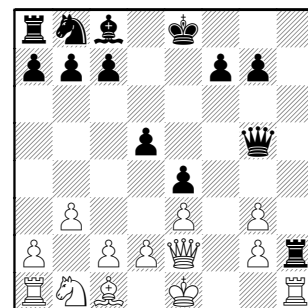


would also leave black in the drivers seat since he could play to win the exchange with 13...Bh3 (or simply to dominate the K-side with 13...Rxh2)]

6...Nxh5 7.Nxh5 Qg5



8.Ng3 e4 9.Qe2 Bxg3 10.fxg3 Rxh2



I assume this is what my opponent missed when playing 6.Bxh5

11.Rxh2 Qxg3+ 12.Qf2 Qxh2 13.Nc3

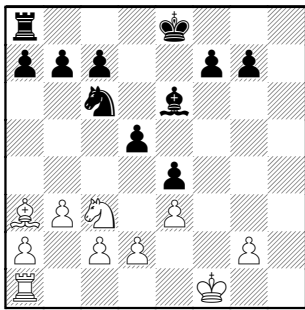
Black's aggressive play has netted a pawn and he now has to make a decision. How to protect the d-pawn?

Clearly it was time to take stock of the position. *First off* black has a bad bishop. This means that protecting

the pawn with c6 is not really an option. The last thing black should do is put yet another pawn on the same color squares as the bishop. Next note that white is slightly ahead in development. Finally black is ahead 1 "good" pawn.

During the game I felt these factors combined to mean the d pawn should be defended by playing Be6 but that first it was safest to force the queen trade.

13...Qh1+ 14.Qf1 Qxf1+ 15.Kxf1 Be6 16.Ba3 Nc6

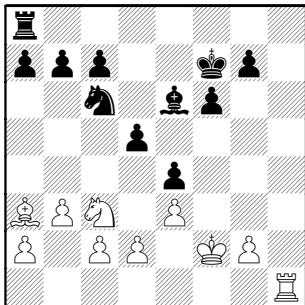


17.Kf2

The last couple of moves have been about white racing to control the h file. In fact it is precisely because he wishes to control the h file that he hasn't had time for the obvious Nb5.

For instance, after 17.Nb5 Kd7 18.Kf2 Rh8, the only open file suddenly belongs to black.

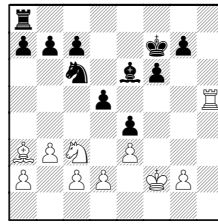
17...f6 18.Rh1 Kf7



So white has the open h file but what can he do with it?

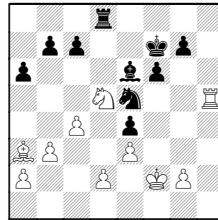
19.Ne2

The only ambitious plan that this author can see is 19.Rh5



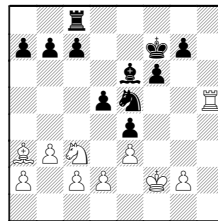
when black can play the solid 19...Rd8

After the more aggressive 19...a6!? 20.Nxd5 Rd8 21.c4 Ne5

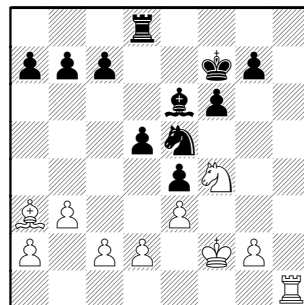


the game will get sharp in a hurry.

20.Nb5 Rc8 21.Nc3 Ne5

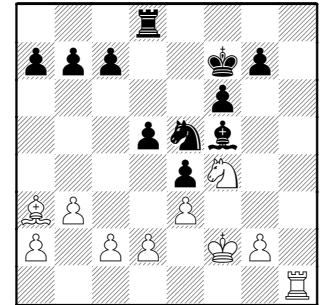


19...Ne5 20.Nf4 Rd8



Black is not concerned at all about trading the bad bishop for the good knight. In fact doing so would eliminate white defenses based around the idea of trading into an opposite colored bishop ending!

21.Rh7 Bf5 22.Rh1



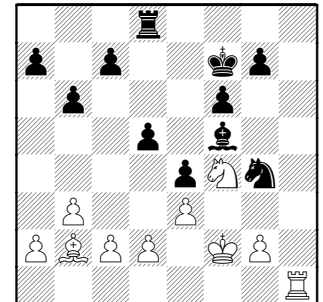
White has made absolutely no headway on that h-file and black is starting to build towards d4 and opening the d file.

That said I wished to restrict white's bishop and gain control over more dark squares before making the big break.

22...b6

Despite my last comment, the text is probably ever so slightly less accurate than 22...c5 would have been.

23.Bb2 Ng4+



I just love this move. If it weren't so obvious it would be profound.

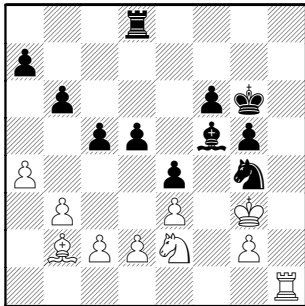
White now has to make a difficult choice. If the king goes to the first

rank it will probably get in the way later when his rook needs to swing to the queenside. There is of course a third choice. What could it's downside be?

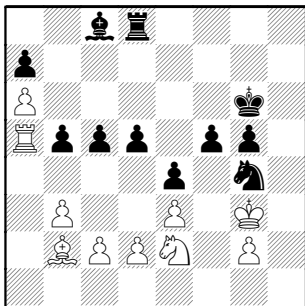
24.Kg3? Perhaps a question mark is a bit harsh, however from here on black's position virtually plays itself culminating in his devastating 30th move

No better would be 24.Ke2 as it blocks the Knight's retreat, and after 24...g5 25.Nh3 the knight is in the way of the rook by going to the edge of the board. (Recall the cliché "Knights on the rim are grim.")

24...c5 25.Ne2 g5 26.a4 Kg6

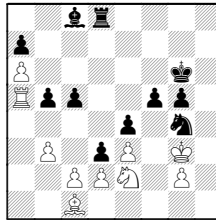


27.a5 b5 28.a6 Bc8 29.Ra1 f5 30.Ra5



30...d4! 31.Nf4+

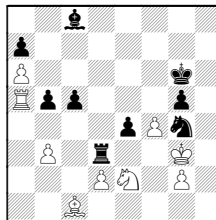
The best move probably is 31.Bc1 d3



but not really much better. The main variations start with 32.Nc3

A) 32.cxd3 f4+ 33.Nxf4+

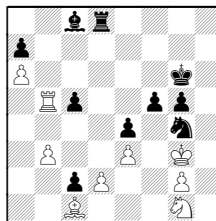
(33.exf4 Rxd3#)



A pretty MATE!!)

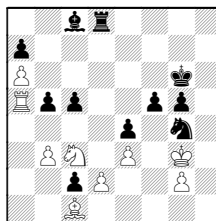
33...gxf4+ is totally lost as well

B) 32.Ng1 dxc2 33.Rxb5



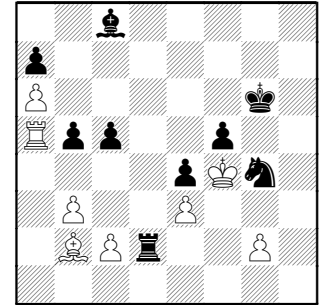
33...f4+ 34.exf4 Rd3+ 35.Nf3 exf3 etc;

32...dxc2

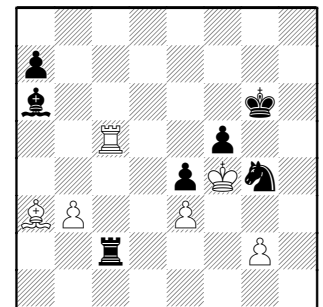


Black continues with threats of f4 and Rd3 so again forces the win of Knight after 33.Ne2 f4+ 34.Nxf4+

31...gxf4+ 32.Kxf4 dxe3 33.dxe3 Rd2



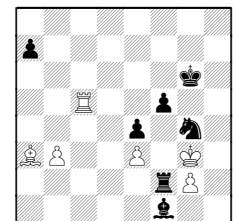
34.Rxb5 Rxc2 35.Ba3 Bxa6 36.Rxc5



Here, I was expecting a resignation soon and inadvertently relaxed. The result ... a terrible mistake.

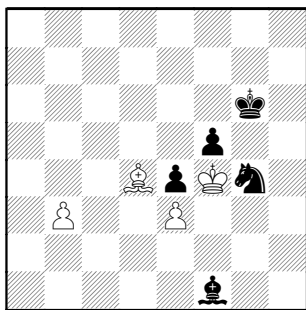
36...Rxc5?

Simply 36...Rf2+ 37.Kg3 Bf1



keeps white in a mating net and forces the win of even more material.

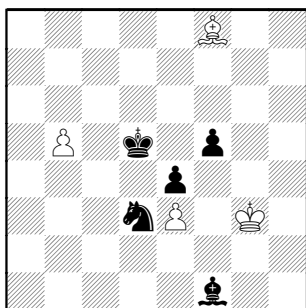
37.Bxc5 Bf1 38.Bxa7 Bxg2 39.Bd4 Bf1



Instead of winning all the material white had left Black has settled for this. The position is clearly winning but it still requires some technique.

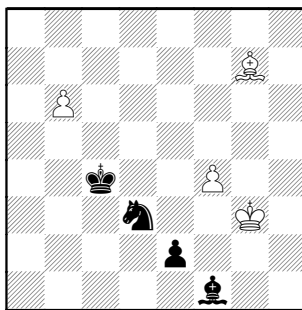
The best white can hope for is to trade his bishop and pawns for black's two pawns and then ask black to mate with a bishop and knight. If you've ever tried it you will know that bishop and knight is probably the most difficult of the "simple" mates. In fact masters have been known to "blow" it on occasion. In this case I wasn't overly worried since, if nothing else, I could call for an adjournment after 2nd time control at move 65 and then study up on it. The problem is ... who wants to do that?

40.Bc5 Nf2 41.Bd6 Nd3+ 42.Kg3 Kf6 43.b4 Ke6 44.Bf8 Kd5 45.b5



45...f4+! Much more elegant than playing to win White's Pawns.

46.exf4 e3 47.Bg7 Kc4 48.b6 e2

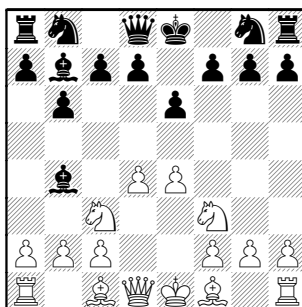


And of course there is no way to stop the coronation ceremony (with check) so ... **0-1**

Dowell, Ernest (1772) - Santiago, Teddy (1955) [B00]
Excaliburs-Forks, 03-13-2008

[Notes by Tom Friske]

1.e4 b6 2.Nf3 Bb7 3.Nc3 e6 4.d4 Bb4



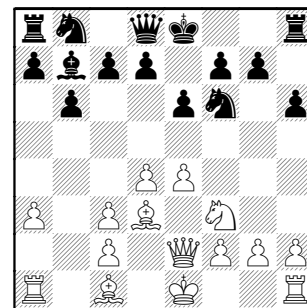
Teddy claims to never study chessbooks, but plays this position to exact GM standards.

Similar to a Nimzo-Indian, Black wants to weaken support of e4. However, this opening move order finds a Pawn at e4 and a Bishop bearing down on it, so an immediate crisis in the center develops.

5.Bd3 h6 We've seen this move often in our review of Teddy's games....and know it 's not just to cover g5.

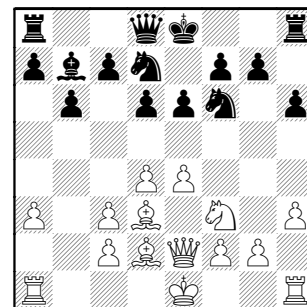
6.a3 Bxc3+ Parting with a Bishop is never a problem with this guy, he often thanks you for it !

7.bxc3 Nf6 8.Qe2



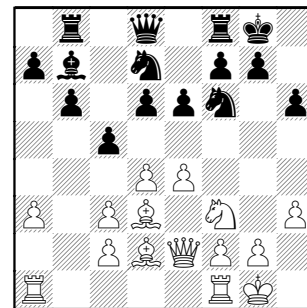
8...d6 9.h3 I would expect this to herald a coming Bf4, so it can retreat to h2 or maybe it means Be3 to support the center. Either way, the Bishop only has long-term hopes.

9...Nbd7 10.Bd2



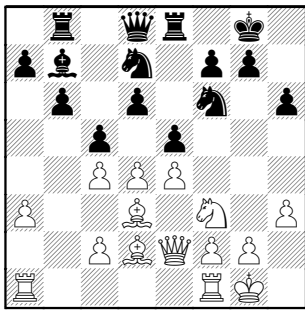
Not an active posting

10...c5 11.0-0 0-0 12.Rab1 Rb8 13.Ra1



[The only scoresheet turned in had 11 0-0 Re8, without Black's castling this is impossible, so all moves between there and here were simply made up -- but the game plays correctly for the duration]

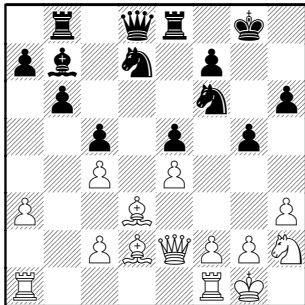
13...Re8 14.c4 e5 forcing a decision



15.dxe5

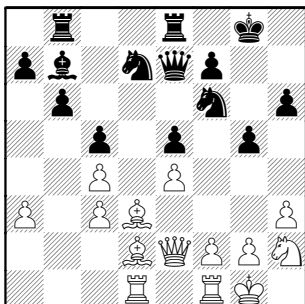
15.d5 would make the Bishop pair look a bit silly

15...dxe5 16.Nh2 g5



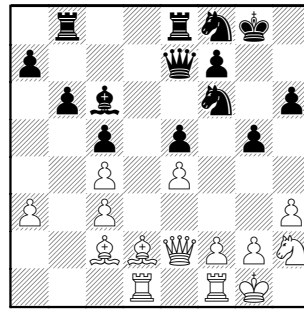
A trademark flank expansion, but perfectly valid with the stable center. The only question is who will be able to use the d-file ?

17.Rad1 Qe7 18.c3

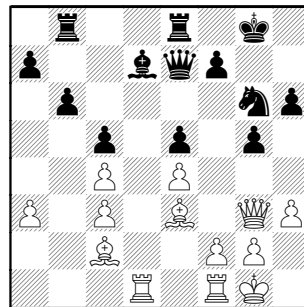


Probably deciding to cover d4 (Nf8-e6 would threaten Nd4), but his extra Bishop is now useless.

18...Nf8 19.Bc2 idea Ba4 19...Bc6



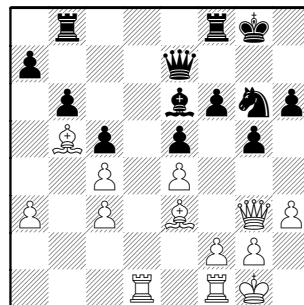
20.Ng4 Nxd4 21.Qxd4 Bd7 22.Qg3 Ng6 23.Be3



23...Be6 24.Ba4 Rf8

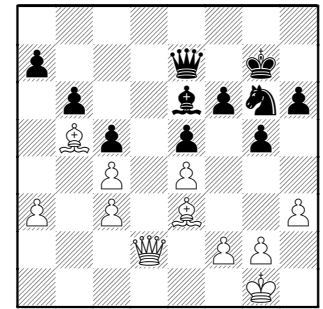
Black doesn't capture the open file after 24...Red8 25.Qf3 with a double-Rook trade and Qd1

25.Bb5 f6



Oh, how well I remember playing against him—telling myself he makes so many “weakening” moves and didn’t play “properly”. And the frustration of not finding a way to clobber him !

26.Rd2 Kg7 27.Rfd1 Rfd8 28.Qf3 Rxd2 29.Rxd2 Rd8 30.Qd1 Rxd2 31.Qxd2

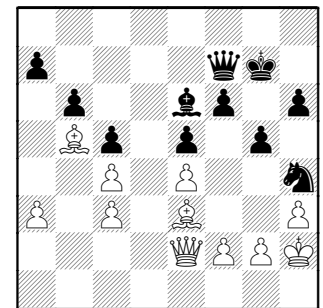


Black probably has a won ending as he can put three attacks (B,Q and N from a5 or d6) on c4 and win that Pawn. Queenside invasion will finish White off.

31...Nh4

I was expecting 31...Nh8 idea Nf7-d6-b7-a5, Qf7

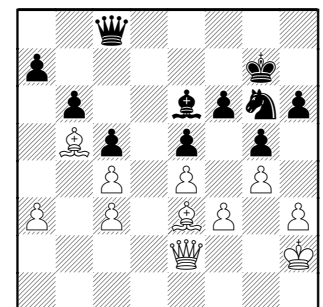
32.Qe2 Qf7 33.Kh2



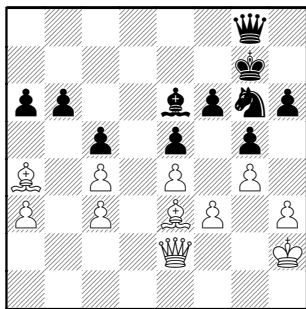
33...Qb7

With White's Bishop and Queen tied to c4, I was expecting 33...Ng6 idea Ne7-c8-d6

34.g3 Ng6 35.f3 Qc8 36.g4



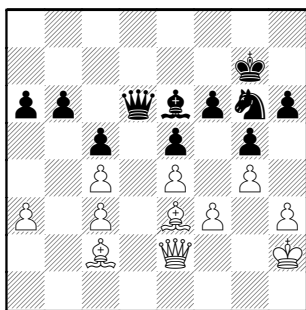
36...a6 37.Ba4 Qg8



38.Qd2

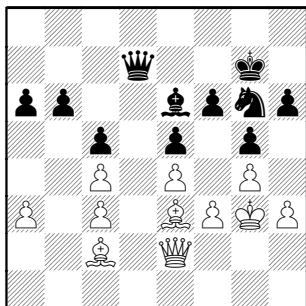
38.Bb3 b5 takes advantage of the hanging Bishop, but Black would leave Pc5 hanging as well

38...Qb8 idea b5 39.Qe2 Qd6 40.Bc2

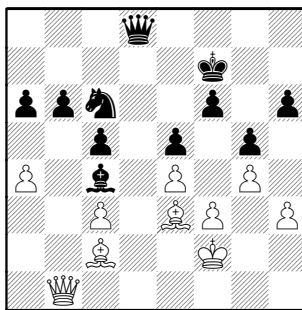


40...Nh4 Still on the wrong side of the board, from my viewpoint

41.Kg3 Qd7 42.Bc1 Ng6 43.Be3

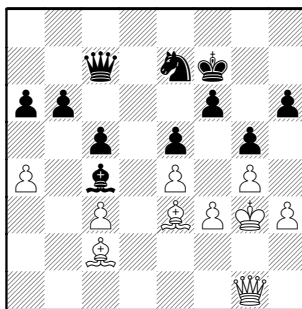


43...Ne7 44.a4 Nc6 Finally ! 45.Qe1 Bxc4 46.Qb1 Qd8 47.Kf2 Kf7



Black's missing recording his 11th and 12th moves makes him believe he has seconds left to the time control... so the plan stalls a bit.

48.Kg2 Qc7 49.Kg3 Ne7 50.Qg1

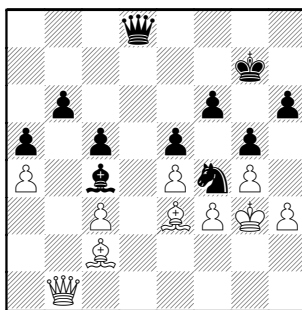


hindering b6-b5 due to hits on Pc5

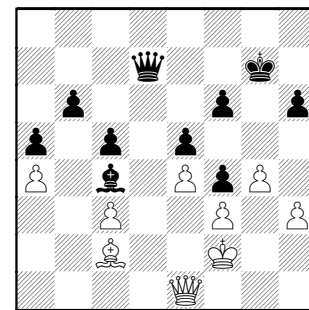
50...a5

I guess he makes an a-passer now with eventual b6-b5, but in the meantime seems weakening b5 and b6. But a real weakness only exists if it can be attacked.

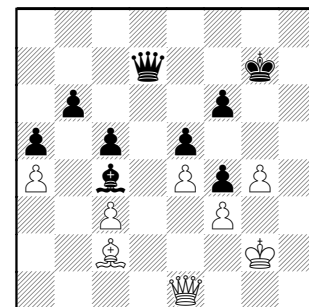
51.Qd1 Ng6 52.Qb1 Qd8 53.Kf2 Kg7 54.Kg3 Nf4



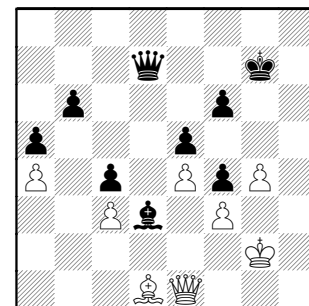
55.Qe1 Qd7 56.Bxf4 gxf4+ 57.Kf2



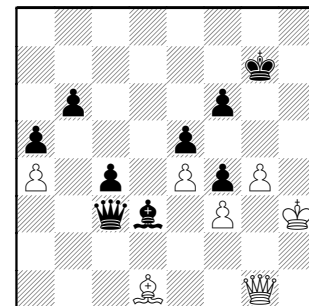
57...h5 opening the h-file 58.Kg2 hxg4 59.hxg4



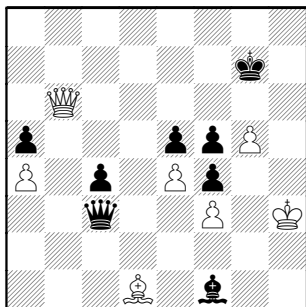
59...Bd3 60.Bb3 c4 61.Bd1



61...Qd6 Queenside invasion, as expected when entering the ending back at move 30. 62.Qg1 Qa3 63.Kh3 Qxc3



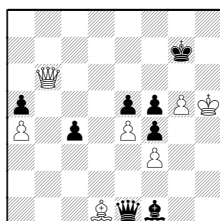
64.g5 f5? [64...Qd4] 65.Qxb6 White has perpetual checks from the 6th rank ! 65...Bf1+



WHITE RESIGNED

miscalcing position of his King after

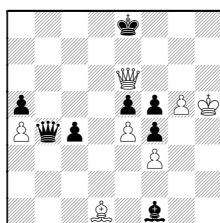
66.Kh4 Qe1+ 67.Kh5



threatening drawing by perpetual

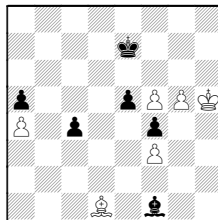
67...Qb4 68.Qf6+ Kg8 69.g6 mate in 2

After 69.Qg6+ Kf8 70.Qf6+ Ke8 71.Qe6+



71...Kd8

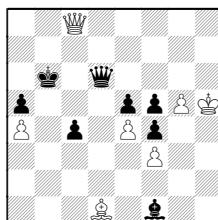
(71...Qe7 72.Qxe7+ Kxe7 73.exf5



72.Qg8+ Kc7

(72...Kd7 73.Qf7+ Qe7 74.Qd5+ Ke8 75.Qxa5)

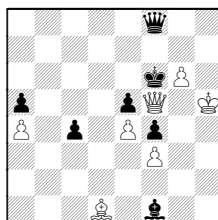
73.Qf7+ Kc6 74.Qe6+ Qd6 75.Qc8+ Kb6



and the checks are over

69...Qf8 70.Qe6+ [70.Qxf5] 70...Kh8

70...Kg7? 71.Qd7+ Kf6 72.Qxf5+



71.Qxe5+ Kg8 72.exf5

0-1

**RESERVE THE
FOLLOWING
POST-SEASON
DATES NOW !!!**

**Spring Business
Meeting
April 16th
Lucent – Naperville**

**Playoffs &
Another event FOR
ALL !
May 10th
(location TBA)**

**Awards Banquet
June 6th**

Chess player calculates how to share his love of the game

By Vince Pierri | *Daily Herald* Columnist

Published: 2/26/2008 12:27 AM

Daily Herald
Big Picture . Local Focus

Rob Krause, below left, loves chess and wants others to love it, too. A member of the **Renaissance Knights Chess** organization, Krause spends some of his day promoting the game. Slanomir Borkowski, right, is his challenger tonight.

There's a section at Libertyville's Cook Memorial Library called the "Quiet Area," but it's not completely silent. The tapping of computer keys; a student ripping paper from a notebook; a middle-aged woman zipping her parka. Typical sounds.

But an odd noise, the clicking of plastic against plastic, comes from one of the tables. The delicate pounding of chess pieces as they conquer each other on a green-and-white board. It's a frigid night in February. As freezing rain pelts the windows, two men are locked in a silent, but intense, competition.

Their body language is aggressive. Leaning forward, arms pressed hard against the table, their eyes scan left then right, up then down, contemplating the next move. Rob Krause comes here every Thursday night. The 33-year-old from Buffalo Grove sets up his board and waits for opponents.



He's been coming weekly for the past five years, a member of the Renaissance Knights Chess organization; Krause spends the better part of his days promoting the ancient game. He loves chess and wants others to love it too. Krause gives lessons to kids in the Chicago Public Schools, adults with disabilities and home-school groups. He's also a chess coach at Stevenson High School. They were state champs this year.

Slanomir Borkowski, a mechanical engineer from Mundelein, is the challenger tonight. Plotting, planning, and second-guessing, Borkowski's thumb is pressed against his temple. Death is in the air, and he knows it. Krause's moves are unexpectedly swift now. His black bishop streaks diagonally and flattens Borkowski's white knight. Krause

scoops it up placing it among his other captives.

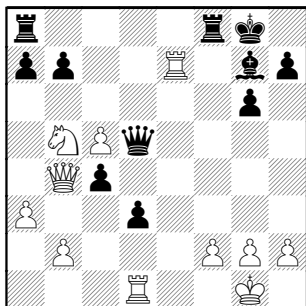
"I like playing fast," Krause says. "It's like a choreographed dance."

There's no smug pleasure in vanquishing an opponent. Krause is way past that.

"Chess is a playhouse for philosophy," he said. "You make judgment calls and learn the value of sacrifice. It's a beautiful game."

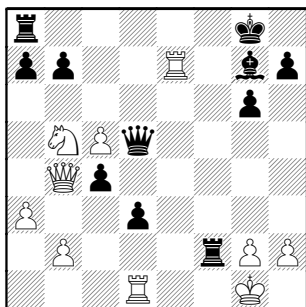
SOLUTION 1.

Wallach,Cliff (2015) –
Friske,Tom (2066)



Black actually played 25...a5, but
interesting stuff can happen after

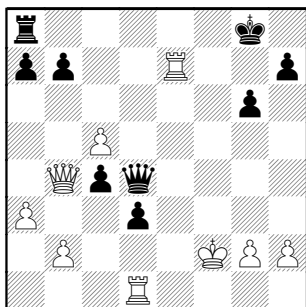
25...Rxf2!



26.Kxf2 Bd4+ 27.Nxd4

(27.Kf1 Rf8+ 28.Ke1;
27.Ke1 Bxc5)

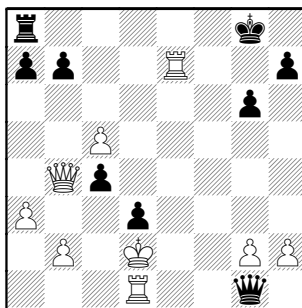
27...Qxd4+



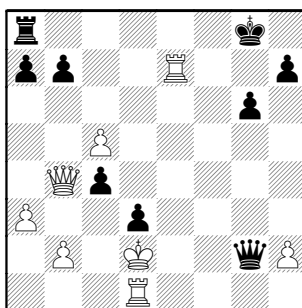
28.Ke1

28.Re3 Rf8+ 29.Kg1 (29.Ke1??
Qxe3#) 29...Qxe3+ 30.Kh1

28...Qg1+ 29.Kd2



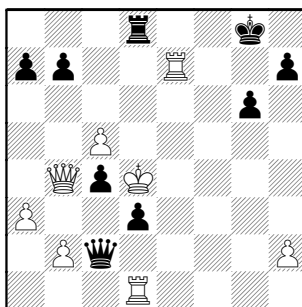
29...Qxg2+



30.Kc3

(30.Kc1 Qc2#;
30.Ke3 Qe2+ 31.Kd4 Rd8+)

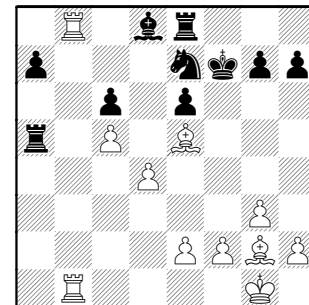
30...Qc2+ 31.Kd4 Rd8+



All roads lead to mate ! The student
can work out the rest

SOLUTION 2.

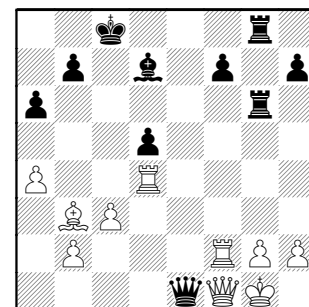
Leong,Gee (1994) –
Walker,Arnie (1734)



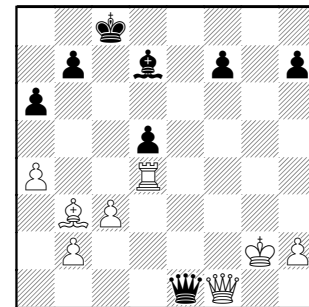
27.Rxd8 Rxd8 28.Bc7

SOLUTION 3.

Williams,Kent (2177) –
Jakstas,Kaz (2145)



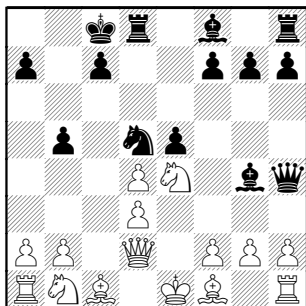
29...Rxd8 30.Rxd8 Rxd8+ 31.Kxd8



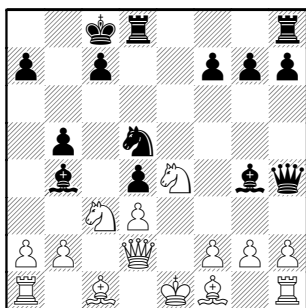
31...Bh3+ 32.Kxh3 Qxf1+ Black won
the Queen, but White had enough
material to draw.

SOLUTION 4.

Siwek, Mark (1965) –
Lee, David (1899)

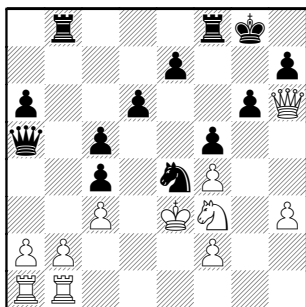


11...Bb4 12.Nbc3 exd4



SOLUTION 5.

Annis, Jim (1469) –
Eustace, Dan (1504)

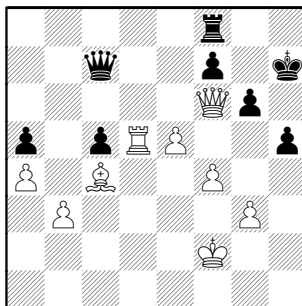


20...Rxb2! 21.Rc1

21.Rxb2 Qxc3+ wipes out both Rooks
with check !

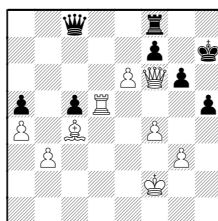
SOLUTION 6.

Komoravolu, Krishna (1355) -
Drendel, Brian

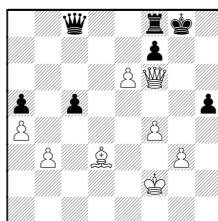


44.e6! Re8

44...Qc8??



45.Rxh5+! gxh5 (45...Kg8 46.Rh8#)
46.Bd3+ Kg8

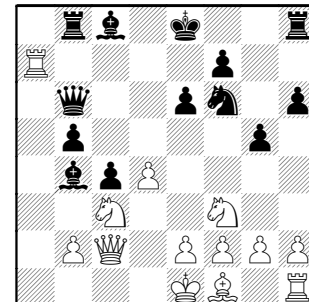


47.Qg5+ Kh8 48.Qh6+ Kg8 49.Qh7#

45.Rd7! Rxe6 46.Qxf7+ Kh6
47.Qh7# 1-0

SOLUTION 7.

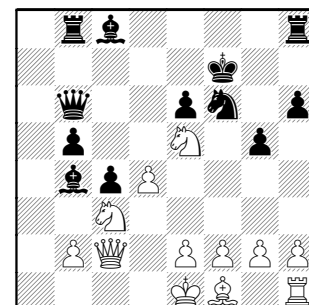
Gaines, Irwin (1741) –
Wang, Andrew (1807)



13.Rxf7

I'm not convinced this sac is the best
game continuation (very committal, all
forces not participating), but it does
make Black work hard

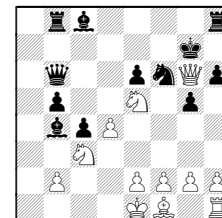
Kxf7 14.Ne5+



A) 14...Ke7

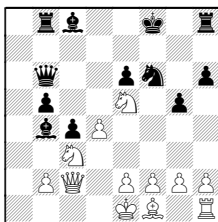
There are 3 plausible retreats, the "C"
line is what I recommend:

B) 14...Kg7?? 15.Qg6+



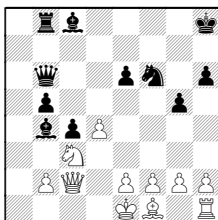
15...Kf8 16.Qf7#

C) 14...Kf8!

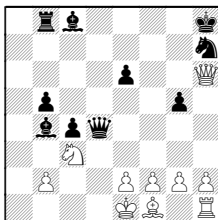


15.Qg6

(15.Ng6+ Kg8 16.Nxh8 Kxh8



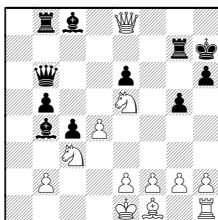
17.Qg6 Qxd4 18.Qxh6+ Nh7



Black remains a piece up)

15...Rh7 16.Qxf6+ Kg8 17.Ng4

(17.Qg6+ Rg7 18.Qe8+ Kh7

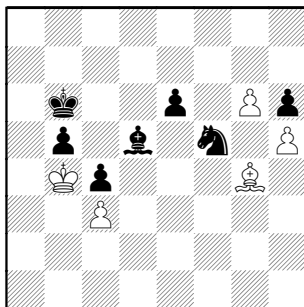


Black did survive and we examine the finale next problem !

SOLUTION 8.

Gaines,Irwin (1741) –
Wang,Andrew (1807)

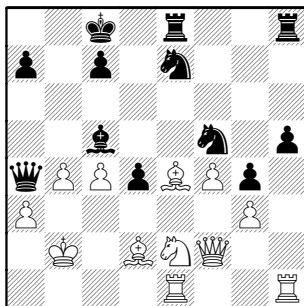
Black's cute finish to the game
started in Problem 7.



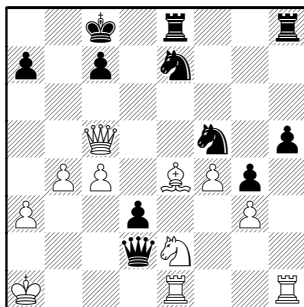
35...Ne3! 36.Be2 Nc2# 0-1

SOLUTION 9.

Alberts,Wally (1565) -
DeGraff,Brian (1508)

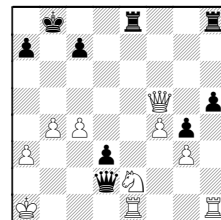


30...d3 31.Qxc5 Qc2+ 32.Ka1 Qxd2



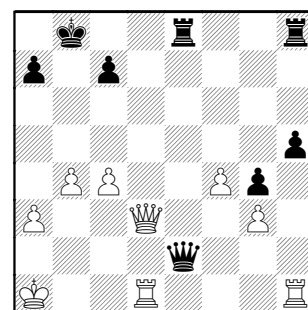
33.Rd1

33.Bxf5+ Nxf5 34.Qxf5+ Kb8

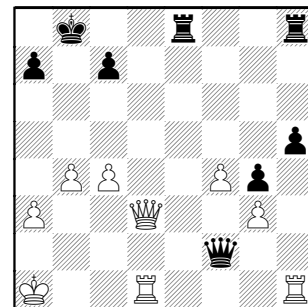


35.Nd4 Rxe1+ -+

33...Qxe2 34.Bxf5+ Nxf5 35.Qxf5+ Kb8 36.Qxd3



36...Qg2 37.Rhg1 Qf2 38.Rgf1 Qg2 39.Rg1 Qf2 40.Rh1



DRAW AGREED (Mutual time
trouble)?

40...Re3 idea Rxa3+,Qxg3 looks
promising

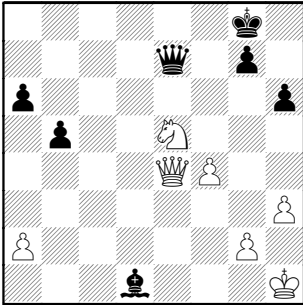
1/2-1/2

SOLUTION 10.

Siwek, Mark (1965) –
Bialon, Darek (1789)

Black was hoping to prosecute an endgame advantage, but apparently missed the tail end of a trading series:

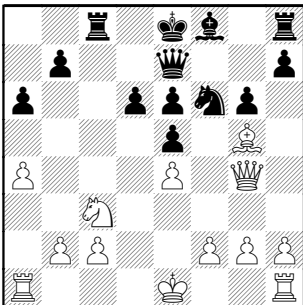
35...Rd1+ 36.Rxd1 Bxd1



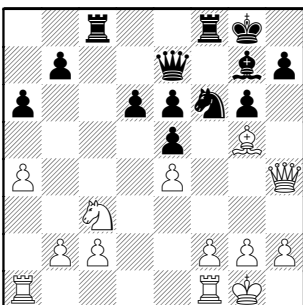
37.Qd5+ Kh7 38. Qxd1

SOLUTION 11.

Nallathambi, R (1600) –
Kaczynski, Woody



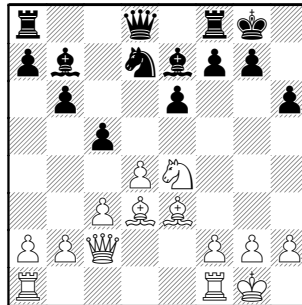
15.Qh4 Bg7 16.0-0 0-0



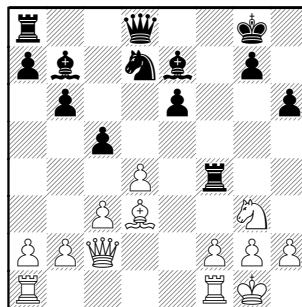
17.f4 and with the subsequent opening of the f-file, the pinned Knight was soon won

SOLUTION 12.

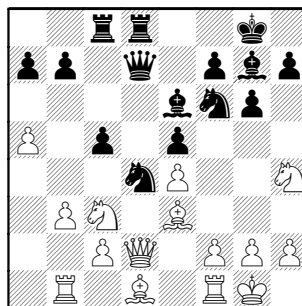
Tan, Arway (1657) –
Rodnycnsky, Seva



13...f5 14.Ng3 f4 15.Bxf4 Rxf4

**SOLUTION 13.**

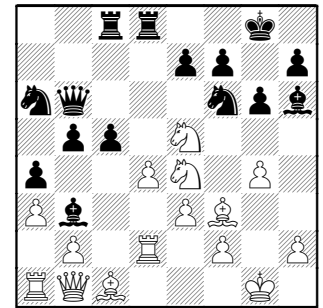
Harper, Monroe –
Li, Jeffrey



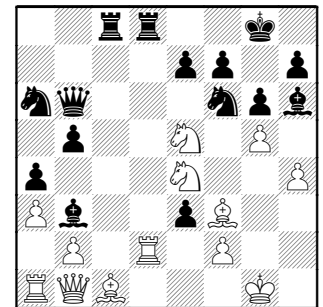
17...Qc6 18.f3 Nxf3+ 19.Nxf3 Rxd2

SOLUTION 14.

Friske, Tom (2002) –
Lee, David (1899)



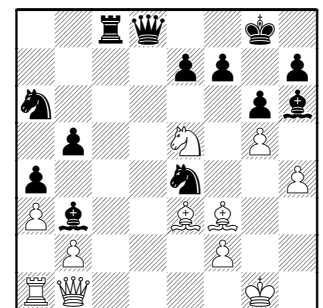
20.h4 cxd4 21.g5 dxe3



22.Rxd8+ Qxd8

22...Rxd8 23.Bxe3 idea gh/Bxb6

23.Bxe3 Nxe4



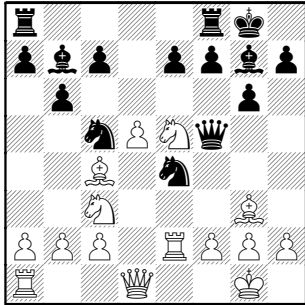
24.Qxe4

24.Bxe4 Bg7 25.Nxf7 Bxf7 26.Bb7

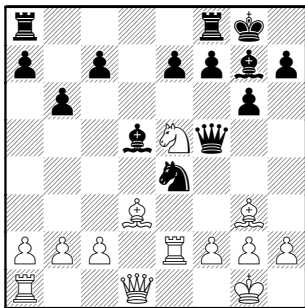
24...Bg7 25.Nc6 White wins an exchange

SOLUTION 15.

**Persons, Josh –
Reid, Carl (1404)**



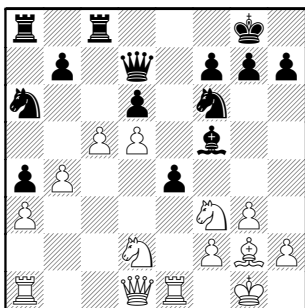
16.Nxe4 Nxe4 17.Bd3 Bxd5



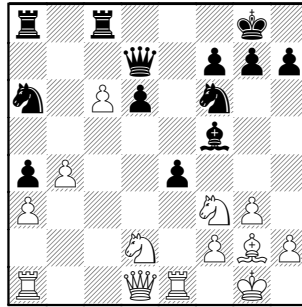
8.f3

SOLUTION 16.

**Nguyen, Tam –
Allsbrook, Scott**



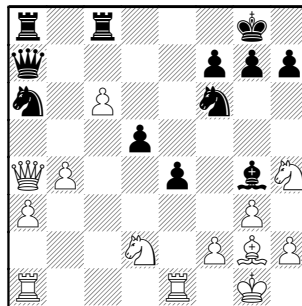
20.c6 bxc6 21.dxc6



21...Qa7

21...Rxc6 22.b5, forking ;
21...Qxc6 22.Nd4 Qd7 23.Nxf5
winning e-Pawn or a-Pawn

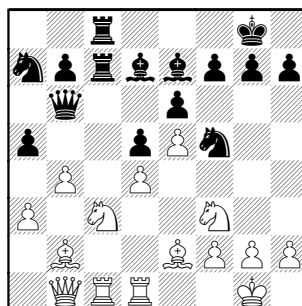
22.Nh4 Bg4 23.Qxa4 d5



24.Bf1 Qb6 25.b5 Nc7 26.Qb4
White pushed his Pawns at the
expense of immediate material - and
lost.

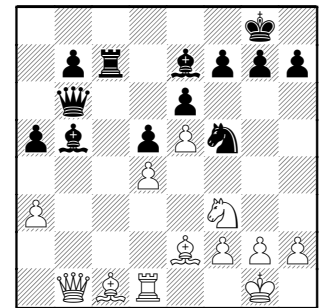
SOLUTION 17.

Diaz, Pablo - Freidel, Jesse



18.b5! Nxb5 This is what was played
- White shows the Pawn is poisoned.

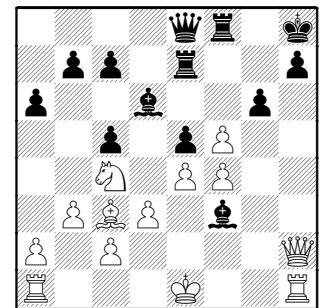
19.Nxb5 Bxb5 20.Rxc7 Rxc7 21.Bc1



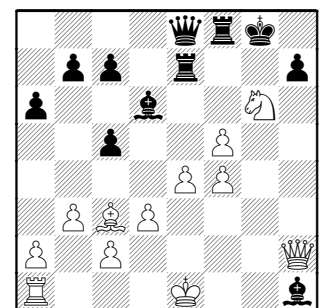
the pinned Bishop is won

SOLUTION 18.

Guio, Julian - Wang, A



24.Nxe5 Bxh1 25.Nxg6+ Kg8



1-0