

The Chicago Chess Player

The Official Bulletin of the Chicago Industrial Chess League

MATCH PLAY RETURNS



CICL Contact List

Bulletin Editor/Webmaster Bulletin@ChicagoChessLeague.org	Tom Friske 1035 E Algonquin Road Des Plaines, IL 60016	H:(847) 299-1033 W:{847} 914-8448
Ratings Chairman Ratings@ChicagoChessLeague.org	Art Olsen 714 E Algonquin Road #J102 Arlington Heights, IL 60006	H:(847) 437-9819 W:(847) 719-8036
	FAX : to SBS OTS, 22NW0644-5 at (847) 719-8151	
League President President@ChicagoChessLeague.org	Tony Jasaitis	C:(708) 903-6423 W:(312) 264-2044
League Secretary Secretary@ChicagoChessLeague.org	Jerry Thomas 745 Hageman Pl Naperville, IL 60563	H:(630)420-0188
League Treasurer Treasurer@ChicagoChessLeague.org	Paul Freidel 3N861 Babson Lane St Charles, IL 60175	
Trophy Chairman Trophy@ChicagoChessLeague.org	Marty Franek 9044 S 51 st Avenue Oak Lawn, IL 60453-1730	H: (708) 636-3714 W: (312) 353-0397
Publicity Chairman Publicity@ChicagoChessLeague.org	Matt Vail	C: (312) 933-1516 W: (630)505-6557
Banquet Chairman Banquet@ChicagoChessLeague.org	Wayne Ellice	H: (708) 636-1303

DIVISIONAL CHAIRMEN

East Division ChairmanEast@ChicagoChessLeague.org	Adam Muhs	C: (847) 877-9629 W: (312) 497-1184
West Division ChairmanWest@ChicagoChessLeague.org	Bob Buchner 1316 Kallien Court Naperville, IL 60540	H: (630) 428-7707 W: (630) 979-7707
North Division ChairmanNorth@ChicagoChessLeague.org	Jim Thomson	W: (847) 538-5408

Mark Your Calendars with These Key League Dates:

Fall Business Meeting	Last Wednesday of August (Aug 29 2007)
Spring Business Meeting	3.5 Weeks Before Playoffs (April 16, 2008)
Season Playoffs	Second Saturday of May (May 10, 2008)
CICL Open	Second Saturday of May (May 10, 2008)
League Awards Banquet	First Friday of June (June 7, 2008)

Officer Contact List	2
Contents of Issue	3
News	4
Starting Ratings	6
CICL Email Aliases	9

2007-2008 Team Directory

East Division	10
North Division	11
West Division	13
Team Classification List	15

Fall Business Meeting

Minutes	16
Treasurer's Report	21
2007-2008 Dues Form	23

FEATURES

Quick Biography – Tony Jasaitis	24
Best Games of Eduard Gufeld	25
Usefulness of Chess	46
Club Announcements	48
Chess Stuff at <i>Special CICL Discount</i> !	50

On the cover...

A recent anniversary celebration in Odessa included a human chess game.
Two masters played OTB (background) and move was acted out on the human board.

With contribution from : Tony Jasaitis

Man Your Battlestations !

Another September is nearly passed, and so you know the games have resumed ! Welcome back - hope your season is your best ever!

Fall Business Highlights

After a fairly quiet summer (in terms of off-season discussions), a routine announcement of a second Walgreens team caused some far-reaching ideas. The main problem was they wanted to have a new Company status team along with keeping their Alumni players in a separate Associate team. Unfortunately, the CICL rules didn't allow this combination. The realization is now that a team with less than six players can form, provided Alumni can be found to fill the roster to a stable full team. So now **ALUMNI WANTED !!** If you are currently not a member of a CICL team and a CICL alumnus, you are sorely needed ! See the Contact List at the front of issue for the Chairman of your area.

A by-product of that issue was many words expressing new hope in the future growth of the CICL. The business meeting was one of the productive and positive on record. Stay tuned for developments as they unfold ! Notes from the meeting are in this issue—see Business Meeting minutes.

Dues are Due !!

The team dues form on page 22 was approved at the Fall Business Meeting.

Please note the form provides a \$15 credit of last year's paid banquet deposit, thanks to the picnic format we chose. A large number of teams at the meeting volunteered to forgo the credit, as a donation to the CICL. It was resolved by acclamation to encourage all teams to do so as well. Indicate your desire to donate on the form and include the full payment for this season.

National Chess Day

One angle of promotion was recently realized – in 1978 President Ford declared October 9 National Chess Day. It is coming quickly – your Captain should hear details as plans are finalized (nothing more at presstime).

Team Shell Game

As a result of that rule change, there was a mad scramble for alumni players. Failing teams were quickly reassigned to hopeful teams:

- Walgreens associate team disbanded in favor of the creation of two new teams.
- A Company type Walgreen team was added
- An Associate type Walgreen team was added (two alumni retained from old team)
- Case disbanded and was split
- Lucent Tyros formed as an Associate team and picked up one alumni from the old Case roster
- Excaliburs remained an Associate team, collected remaining players from Case.
- Alumni Aces disbanded
- An Associate type AMA team was added using alumni from the Aces and new AMA members.
- Hedgehogs re-associated with Getco (were formally associated with Loyola University).

CICL vs. Renaissance Knights Match – September 30th *CANCELLED*****

A well-loved season side event is the CICL vs “area club” matches. Somehow they were forgotten when Pat Sajbel (UOP) could no longer take time to organize them. They're back ! A date for September 30 had been approved by both teams, but had to be cancelled due to a scheduling conflict with the RenKnight home site.

Look for a new announcement in October – possibly the 28th. There will most likely be a small charge (\$5) to cover costs—but a buffet dinner is included !

(continued...)

Plan now for the US Amateur Team Midwest !

The league has again approved funding the entry fee for a competitive team to play in USAT for publicity purposes. The Midwest regional championship of this event is typically held during a weekend in mid to early February in Oakbrook. The average rating of the top 4 boards of teams must be under 2200.

We have done very well in the last two years finishing in a first-place tie in 2006, and 2nd-place in a last-round showdown in 2007, resulting in considerable USCF publicity.

Captains, please distribute this and discuss with all your teammates.

I would appreciate the following feedback from people seriously interested in playing in USAT:

- USCF rating
- CICL rating
- If applicable, a good reason to believe the USCF rating significantly understates true strength.
- Interested in being captain?

Members of our prior successful teams are welcome to repeat.

Tony Jasaitis,
CICL President

The Fun Continues...

More and more are enjoying the open skittle night hosted by Computer Associates. You can come and go as you please between 6:30-10:00 PM, every second Tuesday of the month. October 9th is the next date, but be aware that that may be the special National Chess Day celebration. Driving details can be found on the website's "West Division" link. Questions can be made of the Publicity Chairman, as listed on page two.

VOLUNTEERS needed!

Our President has served longer than the standard 2-year term. Will someone step up and give him a break ??

Also, our Trophy Chairman, Marty Franek, has worked like no other securing all the awards at end of season and presenting them at the League Awards Banquet. Help is needed!

Do you do Web graphics and authoring ? The current Webmaster swears he is going for some training in this area "real soon now". You don't even have to take over the website duties, but could simply advise and give some pointers. With the importance of advertising and a decent web presence, the face of the CICL is only seen on the Internet. Write the Bulletin Editor.

NAME	TEAM	W	L	D	RATING	NAME	TEAM	W	L	D	RATING
ALBERTS, W	STCCC	4	4	4	1563	DUFFY, J	ALUMN	0	1	0	1764
ALFONSO, E	MKNGT	0	0	1	1467	DUONG, R	MKNGT	3	2	4	1562*
ALLEN, H	ALUMN	5	1	0	1925	DYCKZKOWSKI, R	CASE	2	4	3	1379
ALLSBROOK, F	CA	6	3	1	2139	EAMAN, R	ALUMN	3	1	3	1857
ANNIS, J	FERMI	2	2	2	1479#	EASTON, R	UOP	6	5	0	1860
ANSARI, N	WALGR	3	1	2	1587	ELEK, G	NORTH	0	1	0	1210C
AROND, D	NORTH	1	3	2	1758	ELLICE, W	PAWNS	4	4	2	1819C
ARUTCHEV, E	NWEST	1	1	0	1300/3	ELLIOTT, T	NORTH	0	3	0	1355
AUBRY, B	NORTH	3	6	0	1606*	ENGELLEN, M	NORTH	4	7	0	1614
AUGSBURGER, L	MKNGT	2	0	2	1809C	EUSTACE, D	DRGNS	5	5	0	1463C
B, ABBOTT	AMATS	1	2	0	0000/2	FABIJONAS, R	PAWNS	5	4	1	1559T
BAKSHI, A	NWEST	4	0	2	2083	FOX, R	MOLEX	0	1	0	1553
BALES, R	BAKER	0	1	0	1369	FRANEK, M	PAWNS	3	7	0	1675D
BALICKI, J	MKNGT	7	3	2	1877C	FRANK, M	ALUMN	1	1	0	1733C
BAURAC, D	ROOKS	2	2	3	1807T	FRANKLIN, D	HEDGE	6	1	2	2164
BENEDEK, R	ROOKS	2	2	0	2136T	FREIDEL, D	BAKER	0	0	1	1310
BENESA, A	ALUMN	1	2	0	2020C	FREIDEL, JER	BAKER	9	2	1	1811
BIALON, D	WALGR	4	2	1	1804#	FREIDEL, JESSE	BAKER	5	3	4	1981
BOLDINGH, E	UOP	3	3	3	1882C	FREIDEL, P	BAKER	6	1	5	1929
BOLSHOV, A	FERMI	1	0	0	1657	FRIDMAN, Y	MKNGT	9	1	2	2203
BREYER, A	DRGNS	3	2	0	1331	FRISKE, T	WALGR	4	6	0	2059C
BROCK, B	ALUMN	1	1	3	2061	FULKERSON, R	ALUMN	2	0	0	1456
BRONFELD, A	EXCLB	0	2	1	1830	FUNG, J	CITGR	0	1	0	1200/3
BROTOS, J	EXCLB	0	1	3	1553T	FURTNER, F	AMATS	0	7	0	1422
BUCHNER, R	TYROS	4	6	3	1659C	GAINES, I	FERMI	5	6	2	1753D
BUCKLEY, J	STCCC	0	1	0	1352	GARZON, G	FERMI	9	2	2	2283
BURIAN, D	NORTH	0	0	1	1516D	GAZMEN, E	PAWNS	1	1	0	2087C
BYRNE, M	CA	2	8	0	1366	GHAIBEH, A	MOLEX	0	1	0	0000/0
CASTANEDA, R	BPCHI	2	4	2	1283	GHAIBEN, A	MOLEX	0	2	1	0000/3
CEASE, H	FERMI	2	1	2	1464	GIBSON, B	STCCC	0	0	0	1308
CHAN, ROBERT	NWEST	2	3	0	2061	GOLOSSANOV, A	FERMI	0	4	0	1400/2
CHERKASSKY, G	MKNGT	2	5	2	1608*	GONCHAROFF, N	MKING	0	5	5	1613V
CHRISTIAN, T	PAWNS	2	0	0	0000/1	GONZALEZ, O	MKNGT	0	1	1	1400/1
CHUN, A	NWEST	1	1	0	800/0	GOODFRIEND, B	AMATS	1	3	0	1274
COULTER, D	BPCHI	2	6	1	1894	GORODETSKIY, S	NWEST	7	1	0	2039
CYGAN, J	MKING	3	3	1	1741	GRABSKY, J	CA	2	3	0	1115*
DECMAN, S	ROOKS	1	1	1	1562D	GRANATA, M	WALGR	5	4	2	1873*
DEGRAF, B	FERMI	4	3	4	1536	GREEN, D	ROOKS	5	3	1	1931D
DEICHMANN, E	MOLEX	1	4	0	1279	GREER, J	BAKER	0	1	3	1408
DENEEN, D	BPCHI	2	6	0	1463	GRUDZINSKI, J	ROOKS	1	2	1	1421
DENMARK, T	CA	2	7	1	1682	GRYPARIS, J	MKING	1	2	0	1391C
DERIY, B	ROOKS	3	3	1	1473*	GUIO, J	TYROS	2	2	1	1852C
DIAZ, P	TYROS	5	7	1	2086C	HAHNE, D	TYROS	7	5	0	1645C
DJORDJEVIC, V	STCCC	3	0	2	1623	HAMELINK, N	WALGR	5	3	2	1818#
DOBR, K	DRGNS	1	3	0	1328Q	HANSON, M	CA	3	2	1	1458*
DOBROVOLNY, C	TYROS	3	5	2	1770D	HAYHURST, W	CITGR	1	2	4	1935
DORIGO, T	FERMI	1	0	0	2126	HENDRICKSON, B	MOLEX	2	4	3	1535
DOSIBHATLA, D	WALGR	4	4	0	1592#	HERMAN, J	BPCHI	0	3	0	0000/4
DOWELL, E	CASE	2	6	2	1747*	HERNANDEZ, F	BPCHI	0	6	1	962*
DRENDEL, B	FERMI	0	1	1	0000/1	HILL, R	ROOKS	3	3	2	1994D

/x - UNRATED; x = # OF RATED GAMES

- 5 TO 9 RATED GAMES

* - 10 TO 24 RATED GAMES

C - CENTURY CLUB MEMBER

D - DOUBLE CENTURION

T - TRIPLE CENTURION

Q - QUAD CENTURION

V - QUINTUPLE CENTURION

05-13-2007

NAME	TEAM	W	L	D	RATING	NAME	TEAM	W	L	D	RATING
HLOHOWSKYJ, I	ROOKS	1	1	2	923*	NALLATHAMBI, R	UOP	4	2	2	1600
HORTON, D	MKING	1	0	0	1920	NGUYEN, T	BAKER	4	2	3	2177
HUGHES, N	WALGR	2	4	4	1630C	NURSE, G	CASE	3	4	0	1830
IRBY, L	AMATS	0	3	0	0000/2	O'DELL, DW	PAWNS	0	1	1	1378D
JAKSTAS, K	PAWNS	0	1	1	2196D	OLSEN, A	UOP	2	6	0	1467C
JANSSEN, G	BAKER	5	0	4	1522	ONG, K	CITGR	0	3	0	1825
JASAITIS, A	HEDGE	5	3	1	1977D	PADILLA, R	STCCC	4	0	1	1639
JONNALA, B	MOLEX	2	3	0	0000/4	PALACIOS, M	BAKER	1	0	1	1560#
JOSHI, B	MKING	3	1	1	1585*	PARAOAN, E	CASE	2	3	0	1608D
KARANDIKAR, S	MKNGT	4	1	0	1676	PARRA, J	CITGR	1	2	0	1200/2
KARPIERZ, J	TYROS	0	0	1	1300	PATELLA, C	AMATS	0	1	0	0000/1
KOGAN, G	EXCLB	0	3	0	1671C	PEHAS, A	DRGNS	2	1	3	1849C
KOMORAVOLU, K	DRGNS	3	1	2	1314	PETERSON, T	AMATS	1	6	0	1483*
KRATKA, M	HEDGE	2	4	0	1603	PIPARIA, J	MKING	6	3	1	1893
KRAVIK, S	NWEST	2	1	0	1414	PIOWOWAR, T	AMATS	0	4	0	1050/3
KUHLMANN, S	ROOKS	1	2	0	1368*	POWERS, E	STCCC	1	3	1	1498
KUNHIRAMAN, P	CITGR	5	0	1	1593#	PRADT, D	STCCC	1	0	0	1635
LAForge, W	TYROS	3	2	0	1409	PRASANTHI, D	WALGR	0	1	1	0000/1
LATIMER, E	PAWNS	1	2	1	2000T	PROKOPOWICZ, P	CITGR	3	2	0	0000/2
LE, DUC	CITGR	2	5	0	1692	RABINOVICH, E	MKING	3	4	1	1501
LECHNICK, J	UOP	5	0	3	1742C	RAMIREZ, A	UOP	0	1	0	0000/1
LEE, D	EXCLB	3	4	2	1936	RASO, P	BAKER	2	2	0	2065
LEE, DON	MKING	0	1	0	0000/1	RAUCHMAN, M	HEDGE	0	3	2	2037
LEONG, G	UOP	3	7	0	1925C	REICH, T	MOLEX	1	8	0	1835
LEVENSON, S	WALGR	8	3	1	2024	REID, C	CASE	1	5	2	1429D
LU, D	NWEST	1	3	0	1378*	RINGENBERG, T	BPCHI	1	1	2	1474
LUDWIG, T	DRGNS	7	2	0	2013C	RODNYANSKY, S	NWEST	2	3	2	1683
MANILA, M	BPCHI	0	1	0	1141*	RUFUS, B	MOLEX	4	3	0	1341*
MARCOWKA, R	DRGNS	3	1	0	1967T	SAJBEL, P	UOP	0	1	0	1789C
MARES, C	HEDGE	0	1	0	0000/2	SANTIAGO, T	WALGR	7	4	2	1914C
MARLEY, S	CA	0	0	1	0000/1	SEDOV, A	FERMI	6	2	0	1786#
MARSHALL, J	STCCC	10	1	2	2249	SEET, P	HEDGE	3	3	2	1805
MARTELL, J	NWEST	1	0	0	600/0	SENSAT, J	CITGR	2	3	0	1576
MASITI, J	AMATS	0	6	0	1340#	SHEPARDSON, T	HEDGE	3	1	0	1567
MCCLENDON, L	CA	1	3	2	1301	SITAR, K	ALUMN	0	1	0	1519
MCGEE, M	STCCC	0	1	0	1438	SIWEK, M	UOP	3	3	1	1942D
MCGOWAN, D	MOLEX	6	1	0	1419	SMALLWOOD, J	NWEST	6	1	1	1958
MEISSEN, B	STCCC	1	1	2	1792	SMITH, BR	TYROS	6	1	3	1600C
MELNIKOV, I	MKING	1	4	1	2006C	SMITH, M	HEDGE	7	3	0	1944
MEYER, B	AMATS	0	1	0	0000/1	SOLLANO, E	ALUMN	5	0	0	2015C
MEYER, C	AMATS	0	3	0	1100/5	SOLOMON, A	NWEST	3	1	1	1876#
MICAH, L	BPCHI	0	1	0	0000/1	SOROCK, R	WALGR	0	1	0	900/6
MICKLICH, F	UOP	2	3	0	1537D	SPIEGEL, L	FERMI	5	3	4	1953D
MIKULECKY, B	PAWNS	2	4	1	1396D	SPITZIG, M	PAWNS	2	3	3	1394
MILLER, A	ALUMN	0	0	1	1413	SPLINTER, J	STCCC	4	1	2	2038
MISHLOVE, D	PAWNS	1	0	0	1548	STAMM, V	DRGNS	1	2	1	1497T
MOEHS, D	FERMI	1	2	2	1420*	STAPLES, C	FERMI	1	1	0	1591
MORAN, B	HEDGE	1	0	0	1512	STOLTZ, B	TYROS	3	4	4	1904C
MORRIS, R	MKNGT	10	1	1	2233	STOSKUS, A	STCCC	6	0	0	1446
MUHS, A	CITGR	5	1	2	1557	SUAREZ, E	ROOKS	3	0	0	1868

/x - UNRATED; x = # OF RATED GAMES

- 5 TO 9 RATED GAMES

* - 10 TO 24 RATED GAMES

C - CENTURY CLUB MEMBER

D - DOUBLE CENTURION

T - TRIPLE CENTURION

Q - QUAD CENTURION

V - QUINTUPLE CENTURION

NAME	TEAM	W	L	D	RATING	NAME	TEAM	W	L	D	RATING
SUERTH, F	EXCLB	3	6	0	1498D	WALKER, C	UOP	1	1	1	1803
SUITS, J	STCCC	5	3	4	1632	WALLACH, C	MKING	3	4	3	1960C
SULLIVAN, J	EXCLB	0	3	0	1749D	WANG, ANDREW	BAKER	9	2	1	1815
SUVARNAKANTI, R	BPCHI	1	2	0	1177*	WANG, B	NWEST	1	0	0	1755
TAN, A	HEDGE	3	2	2	1672*	WEITZ, R	EXCLB	2	6	1	1588D
TEGEL, F	DRGNS	2	2	3	2037Q	WIEWEL, J	STCCC	7	3	2	2007
THOMAS, J	DRGNS	1	5	0	1486D	WONG, P	EXCLB	1	0	0	2166C
THOMASON, A	MKNGT	0	1	0	1600/0	WU, A	NWEST	2	2	0	0000/3
THOMSON, J	MKNGT	5	1	2	2011C	YACOUT, A	ROOKS	0	1	0	1584
VAIL, M	CA	4	6	1	1630	ZADEREJ, V	MOLEX	3	5	0	1678
VIGANTS, A	NORTH	0	3	4	1605C	ZOELLNER, J	CASE	3	5	1	1334D
VOIGHT, T	BAKER	0	1	0	1213	ZUBIK, J	BPCHI	1	3	0	1200*
WALKER, A	NORTH	4	3	2	1906						

/x - UNRATED; x = # OF RATED GAMES
 # - 5 TO 9 RATED GAMES
 * - 10 TO 24 RATED GAMES

C - CENTURY CLUB MEMBER
 D - DOUBLE CENTURION
 T - TRIPLE CENTURION
 Q - QUAD CENTURION
 V - QUINTUPLE CENTURION

05-13-2007

There still are questions about the email names (“alias”) assigned to our web host. On this page is an alphabetic listing for your reference.

Alias (@chicagochessleague.org)	Sends to what entity	Actual people mailed
Baker	St Chas Baker Captain	Paul Freidel
Banquet	Banquet Chairman	Wayne Ellice
BP	BP Captain	Bill Slater
Bulletin	Bulletin Editor	Tom Friske
Captains	All CICL Captains	(each Captain named elsewhere)
ChairmanEast	East Division Chairman	Adam Muhs
ChairmanNorth	North Division Chairman	Art Olsen
ChairmanWest	West Division Chairman	Bob Buchner
Chairmen	All CICL Chairmen	(as listed above)
CharlieWard	Retired Ratings Chairman	Charlie Ward
CICL	All CICL members registered*	(everybody in this table)
Citadel	Citadel Group Captain	Adam Muhs, Bill Podoksik
ComputerAssociates	CA Captain	Matt Vail
DownersGroveCC	Downers Grove CC Captain	Brian Smith
Dragons	Lucent Dragon Captain	Dan Eustace
East	All East Division Members	(total of each East Division team listed)
Excaliburs	Excalibur Captain	David Lee
Fermilab	Fermilab Captain	Lenny Spiegel, Irwin Gaines
Forks	Walgreen Associate-team Captain	Tom Friske
Friends	Retired Members still in contact	Joe Brozovich, Ruben Reyes, Charlie Ward, Ely Sollano, Burt Gazmen
Games	Game Editor	Tom Friske
HedgeHogs	HedgeHog Captain	Tony Jasaitis, Michael Rauchman
Internet	Webmaster	Tom Friske
Kings	Motorola Kings Captain	Jankesh Paparia, Nik Goncharoff, Bijal Joshi
Knights	Motorola Knights Captain	Jim Thomson, Jeff Balicki
Molex	Molex Captain	Victor Zaderej
North	All North Division Members	(total of each North Division team listed)
Northrop	Northrop Captain	Arnie Walker
Northwestern	Northwestern University Captain	Arpan Patel, V. Gorodetskiy
Officers	All CICL Officers	(each Officer highlighted in red, incl. Chairmen)
Pawns	Pawn Captain	Wayne Ellice, Bob Mikulecky
President	The Head Cheese	Tony Jasaitis
Publicity	Publicity Chairman	Matt Vail
Ratings	Rating Chairman	Art Olsen
RogueSquadron	AMA Associate-type Captain	?
Rooks	Argonne Rooks Captain	Bob Hill, Dave Baurac
RubenReyes	Retired Bulletin Editor, Contributor	Ruben Reyes
SaintCharles	St Charles CC Captain	Jeff Weiwei
Secretary	CICL League Secretary	Jerry Thomas
Skewers	Walgreen Company-team Captain	Steve Levenson
TornadoSnakes	AMA Company-type Team Captain	Fred Furtner, Thomas Peterson
Treasurer	CICL League Treasurer	Paul Freidel
Trophy	Trophy Chairman	Marty Franek
Tyros	Lucent Tyro Chairman	Dave Hahne, Bob Buchner
UOP	UOP Captain	Art Olsen
West	All West Division Members	(total of each West Division team listed)

CICL East Division Team Directory

Division Chairman – Adam Muhs (see Citadel contacts)

HEDGEHOGS

Captain: Tony Jasaitis 312-264-2044 (W) 708-903-6423 (C)
 Alternate: Michael Rauchman 312-242-4606 (W)

tony@trdlnk.com
 mrauchman@getcollc.com

CITADEL

Captain: Adam Muhs 312-497-9691 (W) 847-877-9629 (C)
 Alternate: Jason Sensat 312-497-1184 (C)

adam.muhs@citadelgroup.com
 jason.sensat@citadelgroup.com

NORTHWESTERN UNIVERSITY CHESS CLUB

Captain Arpan Patel 847-648-0298 (W)
 Alternate: Sevan Muradian 847-274-1352 (W)

a-patel2@northwestern.edu
 s-muradian@northwestern.edu

AMA Tornado Snakes

Captain: Fred Furtner 312-464-4495 (work)
 Alternate: Tom Peterson 312-464-4419 (work)

Fred.Furtner@ama-assn.org
 Thomas.Peterson@ama-assn.org

AMA Rogue Squadron

<Contact Division Chairman for details>

EAST DIVISION SCHEDULE

Rnd	Date	BYE	AMA #2	Citadel	Hedge Hogs	AMA	Northwestern
1	28-Sep	@Northwestern	@AMA	Hedge Hogs	@Citadel	AMA #2	Bye
2	12-Oct	AMA	Citadel	@AMA #2	Northwestern	Bye	@Hedge Hogs
3	2-Nov	@Hedge Hogs	@Northwestern	AMA	Bye	@Citadel	AMA #2
4	16-Nov	@Citadel	Hedge Hogs	Bye	@AMA #2	Northwestern	@AMA
5	7-Dec	AMA #2	Bye	Northwestern	AMA	@Hedge Hogs	@Citadel
6	18-Jan	Northwestern	AMA	@Hedge Hogs	Citadel	@AMA #2	Bye
7	1-Feb	@AMA	@Citadel	AMA #2	@Northwestern	Bye	Hedge Hogs
8	22-Feb	Hedge Hogs	Northwestern	@AMA	Bye	Citadel	@AMA #2
9	29-Feb	Citadel	@Hedge Hogs	Bye	AMA #2	@Northwestern	AMA
10	21-Mar	@AMA #2	Bye	@Northwestern	@AMA	Hedge Hogs	Citadel

Note: AMA is the original Company-type team. AMA#2 is the new Associate team.

CICL NORTH DIVISION - TEAM DIRECTORY

DIVISION CHAIRMAN**Jim Thomson**

(for contact info, see
Motorola Knights)

WALGREENS FORKS

304 Wilmot Road
Deerfield, Il 60015
Tom Friske (Captain)
Tel: 847 914-8448
Forks@chicagochessleague.org

UOP

30 E. Algonquin Road
Des Plaines, Il 60016
Art Olsen (Captain)
Tel: 847 719-8036 (Work)
847 437-9819 (Home)
Jay Lechnick (Assistant Captain)
William.Lechnick@uop.com
Tel: 847 375-7192

MOTOROLA KNIGHTS

Meachum & Algonquin Roads
Schaumburg, Il 60173
Jim Thomson (Captain)
Tel: 847 538-5408
james.thomson@motorola.com

EXCALIBURS

Radison Hotel (Home Site)
2875 N. Milwaukee Ave
Northbrook, Il
David Lee (Captain)
Tel: 847-866-8461 (Home)
d-lee@davidleelaw.com

WALGREENS SKEWERS

304 Wilmot Road
Deerfield, Il 60015
Steve Levenson (Captain)
Tel 847-315-4588
Skewers@chicagochessleague.org

MOTOROLA KINGS

Meachum & Algonquin Roads
Schaumburg, Il 60173
Nik Goncharoff (Captain)
Tel: 847 885-3924
nikgon@aol.com
Jankesh Piparia (Assistant Captain)
Tel: 847-576-7040
Jankesh_Piparia-CJP054@email.mot.com

NORTHROP

600 Hicks Road M/S L 1200
Rolling Meadows, IL 60008-1098
Brian Aubry (Captain)
Tel 224 625-5400
Brian.Aubry@ngc.com

NORTH DIVISION SCHEDULE

Round	End Date	Excaliburs	Walgreen Skewers	Walgreen Forks	Motorola Knights	Northrop	Uop	Motorola Kings
1	21-Sep	*BYE*	Kings	Uop	Northrop	@ Knights	@ Forks	@ Skewers
2	12-Oct	Skewers	@ Excaliburs	@ Kings	@ Uop	*BYE*	Knights	Forks
3	2-Nov	@ Forks	*BYE*	Excaliburs	Kings	Uop	@ Northrop	@ Knights
4	30-Nov	Knights	Forks	@ Skewers	@ Excaliburs	@ Kings	*BYE*	Northrop
5	21-Dec	@ Northrop	@ Knights	*BYE*	Skewers	Excaliburs	Kings	@ Uop
6	18-Jan	Uop	Northrop	Knights	@ Forks	@ Skewers	@ Excaliburs	*BYE*
7	8-Feb	@ Kings	@ Uop	@ Northrop	*BYE*	Forks	Skewers	Excaliburs
8	29-Feb	Round 8 Swiss Pairings *						
9	21-Mar	Round 9 Swiss Pairings *						
10	11-Apr	Round 10 Swiss Pairings *						

* 10 round swiss, first 7 rounds paired in round robin order. 1/2 point *BYE* to unpaired team in rounds 8-10.

CICL West Division Team Directory 2007-2008

Division Chairman – Bob Buchner

DIVISION CHAIRMAN

Bob Buchner (work) 630-979-7707
(home)630-428-7707
(cell)630-728-5045

rfbuchner@sbcglobal.net

LUCENT TYROS

Captain Dave Hahne (w)630-713-1288
Alternate Bob Buchner, (w)630-979-7707

dhahne@lucent.com
buchner@lucent.com

LUCENT DRAGONS

Captain Dan Eustace (w)630-979-5826

deustace@lucent.com

FERMILAB

Captain Lenny Spiegel (w)630-840-2809, (c)630-677-2289

lenny@fnal.gov

ST CHARLES CHESS CLUB

Captain Jeff Wiewel (w)847-298-7500(x637) (h)847-818-8913,

jwiewel@ntnusa.com

BAKER (St Chas CC #2)

Captain Paul Freidel (h)630-443-1471

paulfreidel@inil.com

BP CHEMICAL

Captain Doug Coulter (w)630-821-2064, (h)630-836-0035

Doug.Coulter@bp.com

MOLEX

Captain Victor Zaderej (w)630-718-5203

Victor.Zaderej@molex.com

PAWNS

Captain Wayne Ellice (h)708-636-1303
Alternate Ray Fabijonas (h)708-448-4027

waygames@sbcglobal.net
fabijonasr@sbcglobal.net

COMPUTER ASSOCIATES

Captain Matt Vail (w)630-505-6557, (c)312-933-1516

Matthew.Vail@ca.com

ARGONNE ROOKS

Captain Bob Hill (w)630-252-4865
Alternate Dave Baurac (w)630-252-5584

bobhill@anl.gov
baurac@anl.gov

DOWNERS GROVE CC

Captain Brian Smith (w)630-983-9816

brs483@att.net

WEST DIVISION SCHEDULE

Round	Play by:	Team w/bye	Pairing 1	Pairing 2	Pairing 3	Pairing 4	Pairing 5
1	9/20	Fermilab	Pawns at Stccc	Baker at Molex	Dragons at DGcc	Rooks at BPchi	CompA at Tyros
2	10/9	DGcc	Baker at Pawns	StCcc at Dragons	CompA at Fermi	Molex at Rooks	BPchi at Tyros
3	10/25	Molex	StCcc at Baker	Dragons at Tyros	DGcc at Fermi	Rooks at CompA	BPchi at Pawns
4	11/13	Rooks	StCcc at BPchi	Dragons at Baker	Molex at Fermi	Tyros at DGcc	CompA at Pawns
5	12/4	Pawns	CompA at Baker	DGcc at StCcc	Fermi at BPchi	Rooks at Dragons	Tyros at Molex
6	12/20	CompA	Baker at DGcc	Molex at StCcc	Fermi at Rooks	Tyros at Pawns	BPchi at Dragons
7	1/17	Tyros	BPchi at Baker	StCcc at CompA	Dragons at Fermi	Pawns at Molex	DGcc at Rooks
8	2/7	Dragons	Tyros at StCcc	Rooks at Baker	Fermi at Pawns	DGcc at Molex	CompA at BPchi
9	2/28	BakerCC	StCcc at Rooks	Fermi at Tyros	Pawns at DGcc	Molex at BPchi	Dragons at CompA
10	3/20	StCCC	Baker at Fermi	Tyros at Rooks	Pawns at Dragons	Molex at CompA	BPchi at DGcc
11	4/17	BPchi	Fermi at StCcc	Baker at Tyros	Rooks at Pawns	Dragons at Molex	DGcc at CompA

CICL TEAM DIRECTORY
2007 – 2008 Season

(23 Teams)

<u>TEAM</u>	<u>TYPE</u>	<u>ENTITY</u>	<u>DIVISION</u>
AMA Rogue Squadron	Associate	American Med. Assoc.	East
AMA Tornado Snakes	Company		East
Argonne Rooks	Company		West
British Petrol. Chicago	Company		West
Citadel Group	Company		East
Computer Associates	Associate	Computer Associates	West
Downers Grove CC	Club	Downers Grove CC	West
Excaliburs	Associate	D. Lee Law Offices	North
Fermilab	Company		West
Hedgehogs	Associate	Getco	East
Lucent Dragons	Company		West
Lucent Tyros	Associate	Lucent Technologies	West
Molex	Company		West
Motorola Kings	Company		North
Motorola Knights	Company		North
Northrop	Associate	Northrop-Grumman	North
Northwestern U.	Company		East
Pawns	Club	South Suburban CC	West
St Charles CC	Club	St Charles CC	West
St Charles Baker	Club	St Charles CC	West
UOP	Associate	United Oil Products	North
Walgreens Forks	Associate	Walgreens Company	North
Walgreens Skewers	Company		North

CHICAGO INDUSTRIAL CHESS LEAGUE

Fall Business Meeting of August 29, 2007

At: Lucent in Naperville

Attendees:

Matt Vail (CA)	Wayne Ellice (Pawns)
Tony Jasaitis (President, Hedgehogs)	Jerry Thomas (Secretary, Dragons)
Jeff Weiwei (STCCC)	Bob Buchner (Tyros)
Jim Thomson (MOT Knights)	Tom Friske (Web, Bulletin, Walgreen Forks)
Leonard Spiegel (Fermi)	Norm Hughes (representing Walgreen Skewers)
Brian Smith (Downers Grove Chess Club)	Fred Furtner (AMATS)
David L. Lee (Excaliburs)	

MINUTES

President Tony Jasaitis called the meeting to order at 7:09 P.M.

1. OFFICERS REPORTS:**A. President – Tony Jasaitis**

Tony explained that we have several new teams and some teams in trouble.

B. Secretary – Jerry Thomas

Jerry said there were no changes to the spring business meeting minutes. The minutes were published in the bulletin and are on the CICL web site.

C. Treasurer – Paul Freidel(absent, report emailed)

Paul Freidel is on his honeymoon (Seattle area). Tony Jasaitis presented his treasurer's report and the dues sheet. The 2006-07 year ran fairly close to budget, the budget (see the web site) shows the final figures. The banquet ran a \$72 deficit, and there were some one-time costs, but everything else ran close to target.

We will continue to fund the USAT team and this is in the proposed budget.

One item that was not determined as of the last business meeting was how much of the banquet deposit to credit to the following year's dues. The attached proposed budget allows a \$15 credit of the banquet deposit towards 2007-08 dues (out of the \$25 deposit).

Several team captains offered to donate the \$15 credit to the league and suggested that Division chairs check to see if their division teams would also be willing to donate. Tony as the president would then email the team captains recognizing those teams that are donating.

The treasurer's report and proposed CICL 2007-08 Fall Budget were unanimously approved. The CICL 2006-07 Fall Budget and the dues form are on the CICL web site.

Team captains should submit their team dues payment to:

**Paul Freidel
359 N. Worth Ave.
Elgin, IL 60123**

D. Division Chairmen:**North-Jim Thompson, Chairman**

Jim reported that all teams will return. The Excaliburs are OK as they will pick up Carl Reid from CASE (CASE team dissolving) and some of other CASE players. There were questions about the willingness of the other CASE members to play in the North division.

Jim said there is nothing back from the old REN Knights team. They still do not have a captain and will not have a team.

East-Adams Muhs, Chairman

Tony Jasaitis said Adams Muhs of the Citadel will be the new East Division chairman. Tony gave the East report. The Aces team has folded. AMA will have a 2nd team as an associate team picking up the Aces players (See New Business). There will again be 5 teams in the East division.

West-Bob Buchner, Chairman

Bob Buchner reported that all teams would be coming back with the exception of CASE. CASE players are going to the Excaliburs (See North Division report). Many teams have lost 1-2 players. Lucent will still field 2 teams, but the Tyros need more players and are actively looking for Alumni players. Anyone interested should contact Bob Buchner or Tony Jasaitis. A new team, the Downers Grove Chess Club will join the West (See New Business). Rosters were collected from the club and associate teams.

2. OTHER REPORTS:**A. Bulletin, Games Editor Webmaster-Tom Friske**

BULLETIN: The 3rd Friday of every month will be the bulletin Deadline. Tom will not wait for the ratings. **Tom asked the Division Chairs and all Captains for news items so he can add them to the bulletin. Tom suggested rivalries, division races, color or comments about matches.**

WEB Site: New Features

Tom described the following new Web site features:

1. Bulletin Board last Thanksgiving
2. Chart of teams and their affiliations
3. Photo Archive of over 100 pictures from CICL's last season and local tournaments
4. Index for all CICL bulletins with a Search feature (can search for rule changes, banquets, etc.)
5. Team rosters with ratings for all CICL players

Bulletin Board **PLEASE PASS THE WORD to your teammates.** Even though this feature has existed most of the season, very few meaningful conversations have been started.

Advantages: Natural record, everyone can access, it is searchable.

GAMES Editor: Games submission last season was the lowest (350). Tom said Tactics columns come from scoresheets and again asked captains to mail or email scoresheets to him. Our new scoresheets have a reminder at the bottom about this.

B. Rating Chairman-Art Olsen (not present, emailed in)

Rating Chairman's Report:

I just have a few reminders for team captains and division chairman concerning team rosters, submission of match results and ratings for new players.

1. Team Rosters:

Team captains from:

- . multiple team companies
- . new teams
- . teams with players that have transferred from other teams

should submit their roster lists by emailing their team roster to "ratings@chicagochessleague.org". I also need "over the board" ratings for new players or estimated ratings for new players without existing ratings.

2. New Players:

Team captains should identify new players (1st game) on the match results sheet. The new player's "over the board" rating and ratings source (uscf, fide, estimated, etc) or estimated rating should also be recorded on the match result's sheet.

3. Division Schedules and Team Contact Lists

Division chairmen: Please send me a copy of each division's season schedule and division contact information (Captain and assistant captain names, email addresses and phone numbers) when this information is finalized.

4. Submission of Match Results

Team captains: Please email the match results sheets to "ratings@chicagochessleague.org" as soon as possible after matches are completed.

Since the ratings chairman is an appointed position, I am available to serve as ratings chairman this season.

C. Publicity Chairman-Matt Vail

Matt reminded everyone that former players are an important resource and we have not collected this information. Right now, only captains have any contact info and it is not update to date for former players. We currently don't have enough Alumni players to help teams and need to increase our Alumni player base and information. **Last year we unanimously approved that the League will collect Contact Info on a volunteer basis for all players.**

Matt described the CICL monthly open house held at Computer Associates on the 2nd Tuesday of every month from 6:30 to 10 P.M. It has been very successful and they currently play mainly speed chess. Matt would like to rotate this. **Everyone is invited to come and play at the open house!**

Matt said we should participate in going to malls and area festivals, setting up a table, and playing chess games. Chicago has festivals throughout the summer near or in downtown. Matt said CDW at 120 So. Riverside Plaza, Chicago is a possible new company team.

Matt would like to get our name into the press/newsletters. All these activities are a way to get individuals to want to play. For growth, we need to convert these individuals into teams. Right now we can only refer individuals to club teams. Tom Friske agreed to start a Growth Thread on the Web site bulletin board.

D. Banquet Chairman-Wayne Ellice

Wayne explored a new banquet site of the Alpine Inn (Roosevelt and Wolf Rd in Westchester, Web site www.alpinebanquet.com). They do not have a microphone. They have a family style meal with the lots of entrée choices and require a 45-person minimum. The cost is \$17.95 plus tip and gratuity with a cash bar. Wayne said that the count and full payment is due 1 week prior to the banquet. Wayne will see if he can get better terms. Wayne visited there last year and said they had 6 square tables that could handle a total of 18 games. We would have the room from 6 – 11:30 P.M. The attendees agreed this site should be this year's banquet site.

Wayne will pursue this further – see New Business.

E. Trophy Chairman-Marty Franek (not present, emailed in)

Marty expects the overall trophy/award expense to be similar as last year.

Post meeting: Marty asked for an apprentice to help him with the trophies and possibly take over in the future.

3. Old Business – All appointed officers have agreed to continue.**4. New Business****A. Vote on Admission of New Teams Not Affected by 4B**

Brian Smith described the Downers Grove Chess Club. Brian will be captain of that team and they wish to enter as a new club team. This club meets on Wednesdays in Downers Grove at the DG Public Works Facility building (5101 Walnut Ave, just North of Maple (55th St) and east of I355. They have 15 people on their roster and have been active for 20 years. Wed will be their match date and matches would go from 6:30 to 10 P.M. as they must leave the building by 10 P.M. This team was unanimously accepted.

Hedgehogs – want to associate with GETCO again – this occurred after the meeting. Captains approved this 14-0 via an email vote.

B. Proposal to allow a Company to also field an Associate team

This proposal was accepted unanimously with 1 abstention.

The “(maybe?)” proposal to add the employee/alumni status to the team roster (add to IV.E.4.a) was defeated: 0 For, 8 Against, 3 Abstentions.

C. New Teams Dependent on 4B

AMATS is adding a second team associated with AMATS (AMA Rogue Squadron [AMARS]) with Bob Goodfriend as the captain. They are picking up the Aces players. The AMA current team will be called AMA Tornado Snakes [AMATS]) with Fred Furtner as the captain.

Walgreens has reassembled their current players into 2 teams. One will be the Walgreen Skewers with Steve Levenson as the captain. The other will be an associate team called the Walgreen Forks (Associated with Walgreens) with Tom Friske as the captain.

These teams were accepted unanimously.

D. Teams with Staff problems

Lucent Tyros is becoming an associate team associating with Lucent. This association was approved unanimously. Teams with staff problems was covered by the division chairman reports and 4C.

E. Amend rule declaring double forfeits for games unplayed by the playoffs without playoff implications.

Rule will be the division chairman has the discretion to allow some delay for these types of matches. This proposal was accepted unanimously with 1 abstention.

F. Amend determination of home site in first round of playoffs to higher seed

This proposal was defeated by the vote of: 3 For, 6 Against, 2 Abstentions.

G. Select Banquet Site

Alpine Inn is site. See banquet chair's report.

H. CICL vs Renaissance Knights match

Tom Friske is arranging this with David Heiser of Renaissance Knights. There will be up to 20 boards and it will be held on Sunday 9/30 starting at 5 P.M. at the Renaissance Hotel in Northbrook. A second one will possibly be on 10/28. Tom Friske will send an email to league members.

Post meeting: There will be up to 25 boards and a buffet will be included.

I. USCF rules update

Jeff Wiewel said that the USCF decided to again allow players to record their move prior to making the physical move. The CICL will continue to follow this USCF rule.

J. Discuss ideas for expanding playoffs

The committee reported that they discussed numerous alternatives over the summer and had no recommendations to present to the league. A new thread will be started on the CICL bulletin board to collect more input/feedback. Jerry Thomas said that we lost participation because we did not finalize the playoff site until very late. Tony said we would work to select the playoff site sooner.

The meeting was adjourned at 10:00 P.M.

Jerry Thomas, Secretary September 6, 2007

	2006-07	2007-08
	Final	Budget

Revenue

Basic Team Dues	\$ 1,265.00	\$ 1,320.00
Banquet deposit	\$ 575.00	
Credit of deposit	\$ (322.00)	
Electronic bulletin		
Postal bulletin		
Late fees	\$ 75.00	
Banquet surplus(deficit)	\$ (72.29)	

Total Revenue	\$ 1,520.71	\$ 1,320.00
---------------	-------------	-------------

Disbursements:

Trophies	\$ 809.00	\$ 850.00
Scoresheets		\$ 235.00
Playoff refreshments	\$ 167.54	\$ 150.00
USCF/ICA Dues	\$ 40.00	\$ 40.00
Special	\$ 393.58	\$ 140.00

Total Disbursements	\$ 1,410.12	\$ 1,415.00
---------------------	-------------	-------------

Surplus (Deficit)	\$ 110.59	\$ (95.00)
-------------------	-----------	------------

Assets

Cash balance	\$ 1,204.40
Less payments due & 2008 credits	<u>\$ (412.00)</u>
Net assets	\$ 792.40

Notes

Assumes 24 teams, \$55 basic dues

Includes proposed credit of \$15/team to dues for banquet deposit not returned

2006-2007 trophy expense includes \$25 dues credits for Tyros and Hedgehogs

2006-2007 Special expense includes \$76.58 in incorporation fees, \$140 in USAT entry fees, & \$177 for commemorative pens

2007-2008 Special expense includes a USAT team entry at \$140

To: Chicago Industrial Chess League Team Captains
From: Paul Freidel, CICL Treasurer
Date: August 29, 2007
Re: Dues Charges for the 2007-08 Season

Below are the assessments to each CICL team for the 2007-08 season. Please complete the form below and return it with a check made payable to the Chicago Industrial Chess League.

Team Name: _____ Captain: _____

Annual Basic Dues per 6-player Team **\$55.00** _____

Penalty if postmarked after 11/30/06 \$5.00 _____

Penalty if postmarked after 12/31/06 \$10.00 _____

Annual Bulletin subscription **free!**
Download from www.chicagochessleague.org

Credit from 2006-2007 banquet deposit **(-\$15.00)** _____
(only for teams that paid the deposit in 2006-07)
(Enter "DONATE" to not accept credit... Thank You !!)

Awards Banquet Ticket (1 required per team) **\$25.00** _____

Total \$ _____

The CICL encourages you to pay team dues before 11/30/07. If you are not able to pay team dues before 11/30/07, please inform the treasurer. Any funds included with late payments in excess of the required amount will be considered a donation to the treasury.

Send payment with form to the following address:

Paul Freidel
359 N. Worth Ave.
Elgin, IL 60123

Name: Tony Jasaitis

Age: 21+, but considering past lives, I have no idea.

Family ? Wife and 4 cats

Where were you born ? Lithuania

Favorites:

Color- Blue

Food- Tiramisu, nuts, chocolate, unsalted cashews, Reiner cherries, President plums, Mexican cuisine

Drink- Chocolate milk

Actor- Tom Cruise

Actress- Mary Steenburgen

Movie- Ghost

Book- Rebecca



Number of Years CICL Member : 25

What teams have you played on ?: Marshall Field's, AVJ Software, Alumni, CRT, Bank of America, Tradelink, Wolverine Trading, Getco, Hedgehogs

How were you first introduced to the CICL? : Tim Kras at Marshall Field's started a team there

What leadership positions have you held ? : Secretary, President, Captain

What do like most about the CICL ? : Flexible way to stay in the game

What do you wish was different ? : Somebody to take this President's job

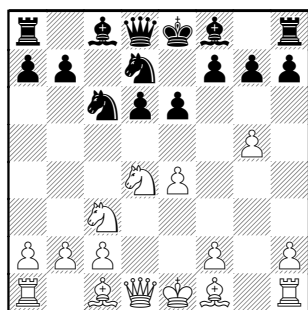
What CICL members would you like to know more about ? : The ones who haven't joined yet

What else should we know about you ? : I'm known as King Pyro in some circles.

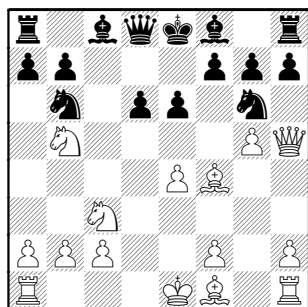
In real chess games, there's no boundaries to what can be given up. Feast on the following games as annotated by GM Gufeld from his autobiographies ! Find yourself ready to abuse opponents this season !

Gufeld - Timoshchenko [B81]
Krasnoïarsk 1980

1.e4 c5 2.Nf3 e6 3.d4 cxd4 4.Nxd4
Nf6 5.Nc3 d6 6.g4 Nc6 7.g5 Nd7



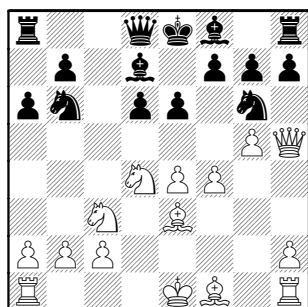
8.Ndb5 [8.Be3] 8...Nb6 9.Bf4 Ne5
10.Qh5 Ng6



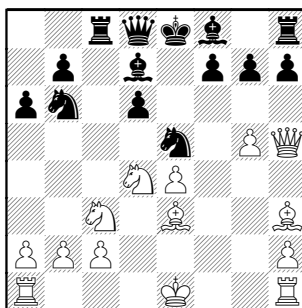
11.Be3

≤11.Bg3 a6 12.Nd4 h6!±
11.Bxd6? Bxd6 12.Rd1 0-0 13.Rxd6
Qe7±

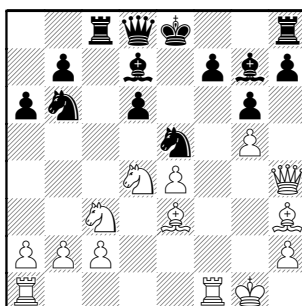
11...a6 12.Nd4 Bd7 13.f4



13...e5 14.fxe5 Nxe5 [14...dxe5
15.Nf5 Nf4 16.Qf3±] 15.Bh3?! Rc8



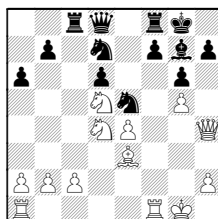
16.0-0 [16.0-0-0 Rxc3! 17.bxc3
Na4→] 16...g6 17.Qh4 Bg7



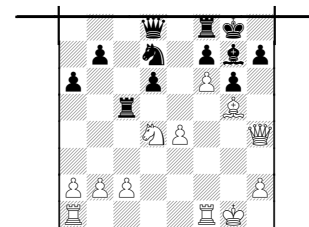
18.Bxd7+ Nxd7

A) 18...Qxd7 XNb6 19.Nf5→;

B) 18...Nbx7 19.Nd5 0-0

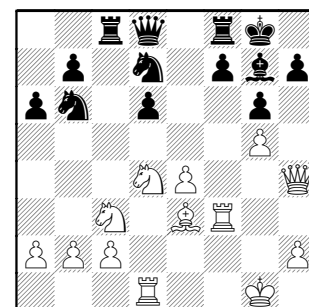


20.Nf6+ Nxf6 21.gxf6 Nd7 22.Bg5
Rc5



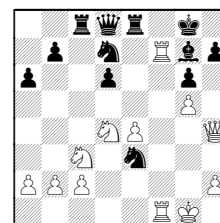
23.Ne6!

19.Rad1 0-0 20.Rf3

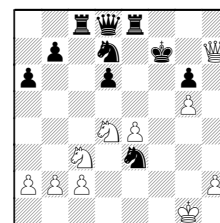


20...Re8!= [≤20...h5 21.Nf5! gxf5
22.exf5; ≤20...Nc4 21.Nf5] 21.Rxf7!?
Kxf7

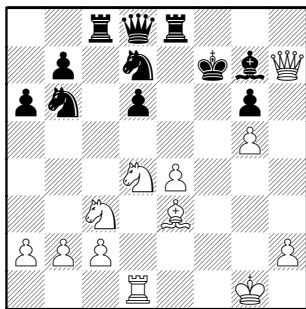
○21...Nc4 22.Rdf1 Nxe3



23.Rxg7+ Kxg7 24.Rf7+ Kxf7
25.Qxh7+♯



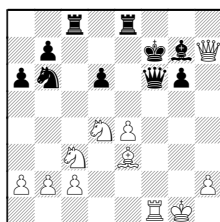
22.Qxh7



22...Rh8

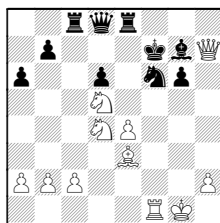
A) 22...Nf6 23.Rf1□

(23.gxf6? Qxf6 24.Rf1



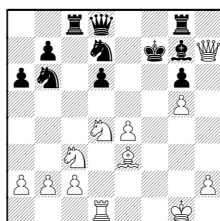
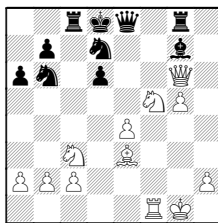
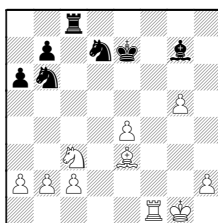
24...Qxf1+ 25.Kxf1 Rh8-+)

23...Nbd7 24.gxf6 Nxf6 25.Nd5



25...Rh8 26.Qxg7+! Kxg7 27.Ne6+-;

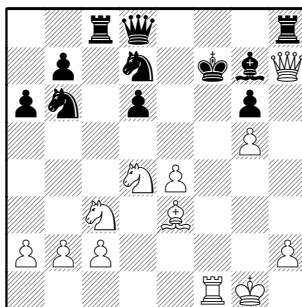
B) ♭22...Rg8!

23.Rf1+ (23.Nd5; 23.h4) 23...Ke7
24.Qxg6 Qe8 25.Nf5+ Kd826.Qxe8+ Kxe8 27.Nxd6+ Ke7
28.Nxc8+ Rxc8

29.g6+-

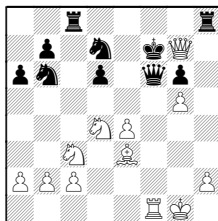
The game picks up top last column...

23.Rf1+



23...Nf6

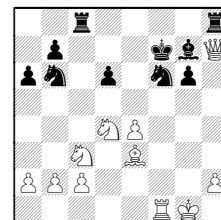
23...Qf6 ♭24.Qxg7+!!



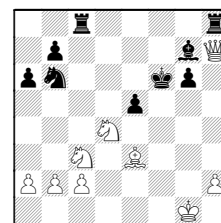
Not so good would be:

(24.gxf6 Rxh7!

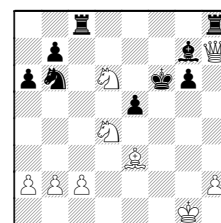
(24...Nxf6?



25.Rxf6+ Kxf6 26.e5+ dxe5

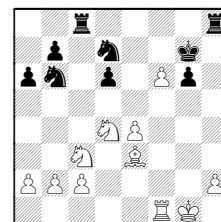


27.Ne4+ Kf7 28.Nd6+ Kf6



29.Bg5+-)

25.fxg7+ Kxg7) 24...Kxg7 25.gxf6+

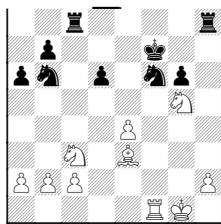


25...Nxf6

(25...Kf7 26.Nf3! ΔNg5+
(26...Nc4 27.Ng5+)

26.Ne6+ Kf7 27.Ng5+

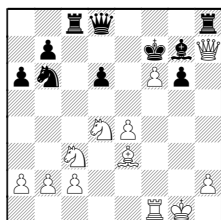
(Diagram follows)



From middle last page:

24.Qxg7+!

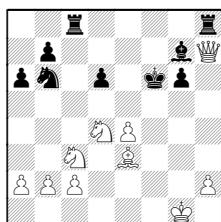
24.gxf6



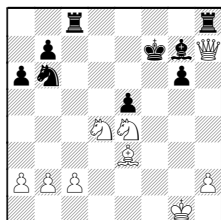
24...Qxf6!!

(24...Rxb7 25.fxb7+ +- idea Ne6+)

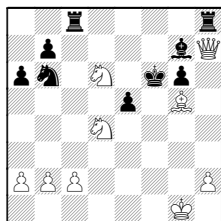
25.Rxf6+ Kxf6



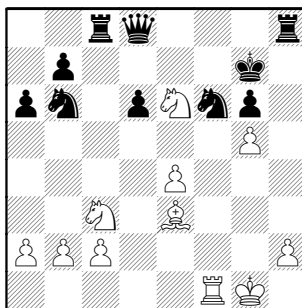
26.e5+ dxe5 27.Ne4+ Kf7



28.Nd6+ Kf6 29.Bg5+ +-



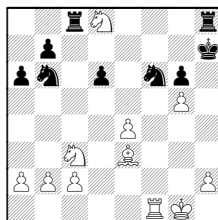
24...Kxg7 25.Ne6+



25...Kg8

25...Kf7 26.Nxd8+ Rxd8 27.Bxb6 Rd7 28.Rxf6+;

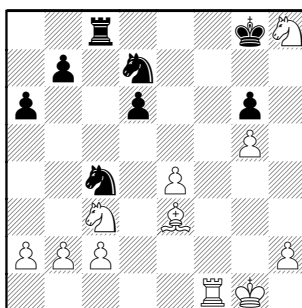
25...Kh7□ 26.Nxd8



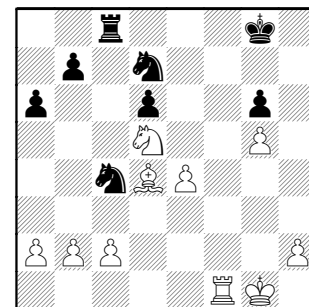
26...Nfd7 27. Nxb7 +/-

(26...Nc4 27.Nxb7 Nxe3 28.Rxf6±)

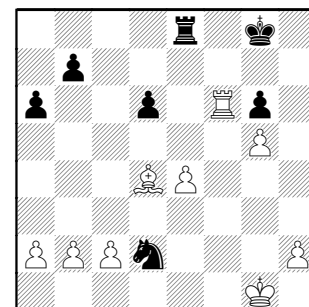
26.Nxd8 Nfd7□ [26...Rxd8 27.Bxb6]
27.Nf7! [27.Nxb7 Nc4!±] **27...Nc4**
 [27...Rh5 28.Nh6+±-] **28.Nxb8**



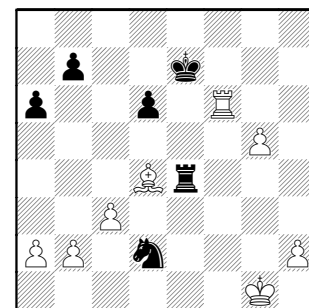
28...Kxh8 [28...Nxe3 29.Nxg6!+-]
29.Bd4+ Kg8 30.Nd5!+-



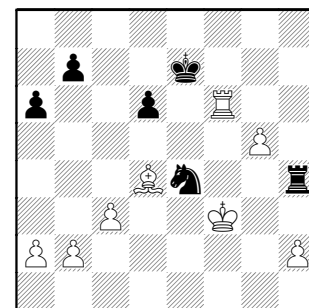
30...Re8 31.Rf4 Nd2 32.Nf6+ Nxf6
33.Rxf6



33...Rxe4 34.Rxg6+ Kf7 35.Rf6+ Ke7 36.c3



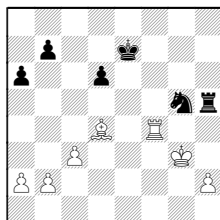
36...Rg4+ 37.Kf2 Ne4+ 38.Kf3 Rh4



39.Rg6

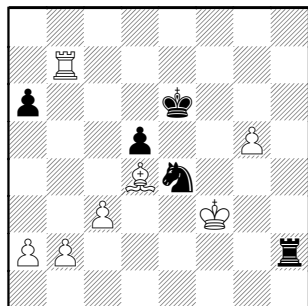
39.Rh6? Nxg5+!

△39.Rf4! Nxg5+ 40.Kg3 Rh5



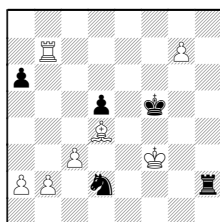
41.Rh4!+-
(41.Kg4?! Rxh2 42.Kxg5 Rxb2)

39...d5 40.Rg7+ Ke6 41.Rxb7 Rxh2



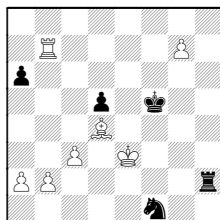
42.g6? [42.Rb6+! Kf5 43.Be3!+-]
42...Kf5 43.Ke3!

43.g7 Nd2+



44.Kg3

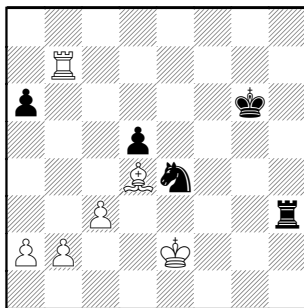
(44.Ke3 Nf1+



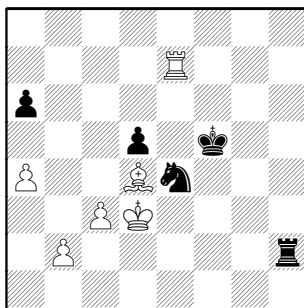
45.Kd3?? Rd2#)

44...Nf1+ 45.Kf3=

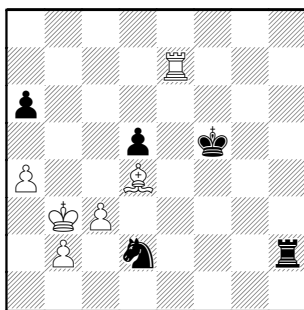
43...Rh3+ [43...Kxg6 44.Kf4!] 44.Ke2
Kxg6



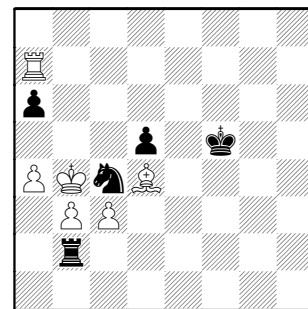
45.a4! Kf5 46.Re7! Rh2+ 47.Kd3



47...Rh3+ 48.Kc2 Rh2+ 49.Kb3
Nd2+

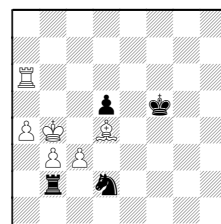


50.Kb4 Nc4! 51.b3 Rb2 52.Ra7!



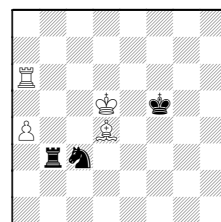
52...a5+

52...Nd2 53.Rxa6



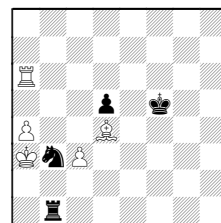
53...Nxb3

(53...Rxb3+ 54.Kc5 Ne4+ 55.Kxd5
Nxc3+



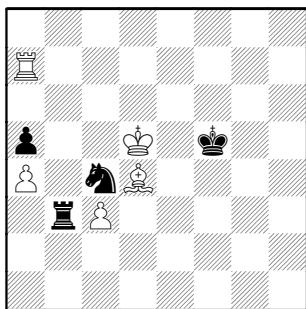
56.Kc4+-)

54.Ka3 Rb1

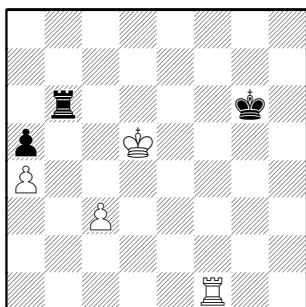


55.Rf6+! Ke4 56.Rb6+-

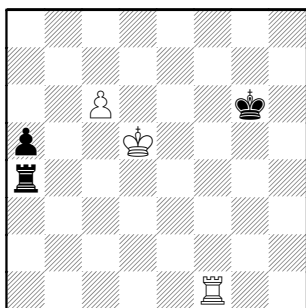
53.Kc5 Rxb3 54.Kxd5



54...Nb6+ 55.Bxb6 Rxb6 56.Rf7+ Kg6 57.Rf1



57...Rb3 58.c4 Rb4 59.c5 Rxa4 60.c6

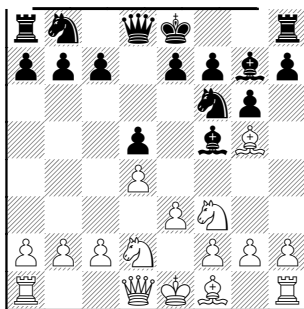


60...Ra2 61.Rc1 Rd2+ 62.Kc5 1-0

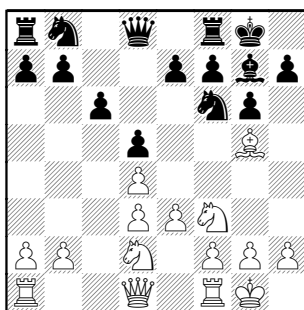
Taimanov - Gufeld
Moscow team ch 1966

[D03]

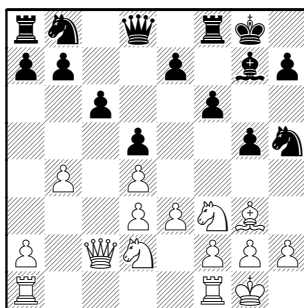
1.d4 Nf6 2.Nf3 g6 3.Bg5 Bg7
4.Nbd2 d5 5.e3 Bf5



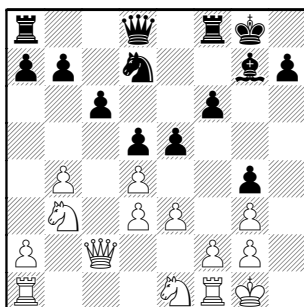
6.Bd3 Bxd3 7.cxd3 c6 8.0-0 0-0



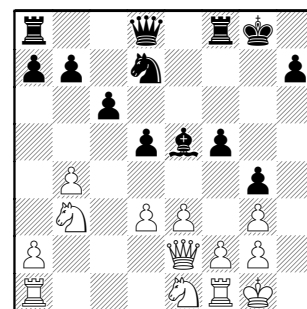
9.Qc2 Nh5 10.b4 f6 11.Bh4 g5
12.Bg3



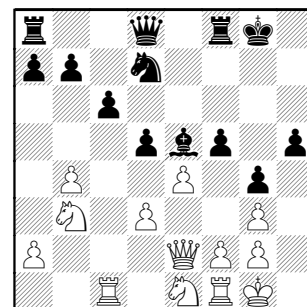
12...g4 13.Ne1 [13.Nh4?! f5!] 13...e5
14.Nb3 Nxg3 15.hxg3 Nd7



16.Qe2 [16.e4!] 16...f5 17.dxe5 Bxe5



18.Rc1 [18.d4 Bd6 19.Nd3 Qg5]
18...h5 19.e4!



19...Qg5! 20.d4!
[20.exd5 Rae8!]

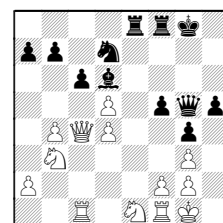
20...Bd6

20...Bxd4? 21.exd5
(21.Nxd4 Qxc1)

21...Rae8 22.Qc4

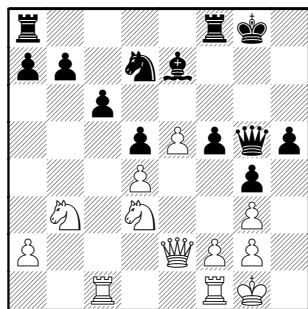
21.e5

21.exd5?! Rae8 22.Qc4

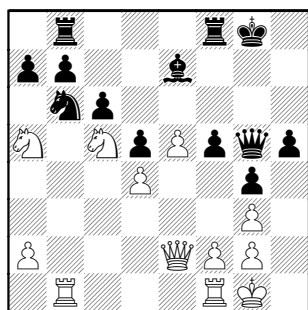


22...Nb6

21...Bxb4 22.Nd3 Be7

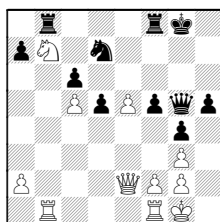


23.Na5 Rab8 24.Rb1 Nb6 25.Nc5

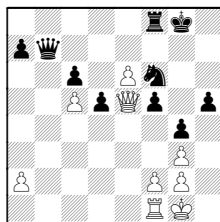


25...h4!

25...Bxc5 26.dxc5 Nd7 27.Nxb7

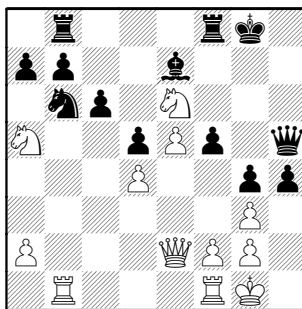


27...Qe7 28.e6 Nf6 29.Qe5! Rxb7
30.Rxb7 Qxb7

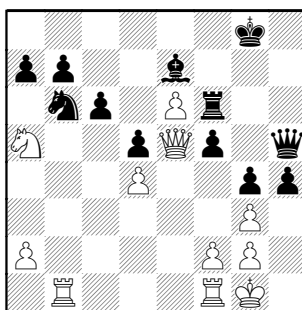


31.e7 Re8 32.Qxf6

26.Ne6 Qh5

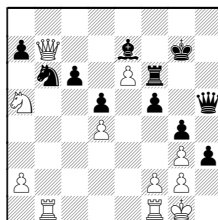


27.Nxf8 Rxf8 28.e6! Rf6 29.Qe5

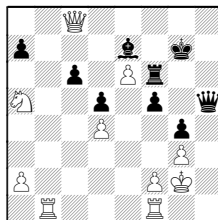


29...h3! [29...Rh6 30.Qb8+ Kg7
31.Qxb7] 30.Qb8+ Kg7 31.gxh3!

31.Qxb7

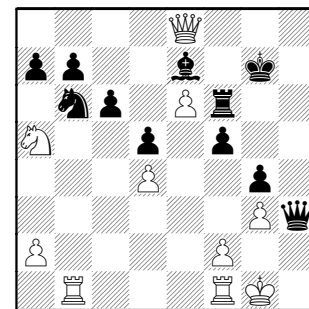


31...Nc8!! 32.Qxc8 hxg2 33.Kxg2



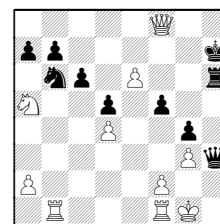
33...Qh3+ 34.Kg1 Rh6

31...Qxh3 32.Qe8



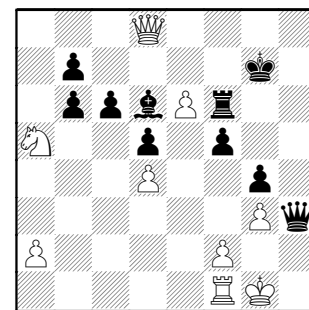
32...Bd6!

32...Rh6? 33.Qxe7+ Kg8 34.Qf7+
Kh8 35.Qf8+ Kh7



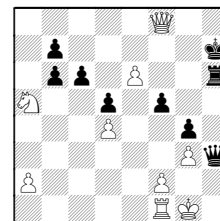
36.Qxh6+! Qxh6 37.e7 *idea*
Rfe1.Nxb7-d6

33.Rxb6! axb6 34.Qd7+ Kg8
35.Qd8+ Kg7

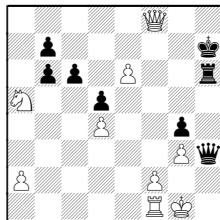


36.e7

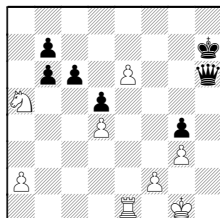
36.Qxd6?! Rh6 37.Qe7+ Kg8 38.Qf7+
Kh8 39.Qf8+ Kh7



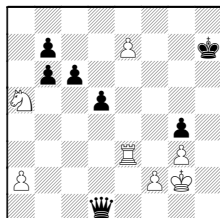
40.Qxf5+ Kh8 41.Qf8+ Kh7



42.Qxh6+ Qxh6 43.Re1



43...Qd2! 44.Re3 Qxd4! 45.e7 Qd1+ 46.Kg2

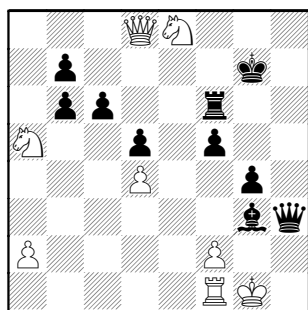


46...d4!=

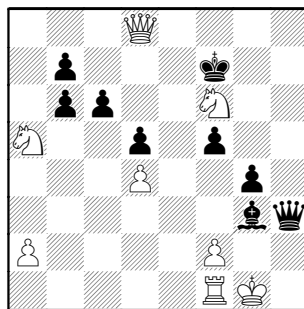
36...Bxg3!

36...Rh6 37.Qf8+;
36...Bxe7 37.Qxe7+

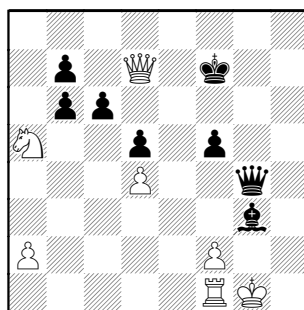
37.e8N+



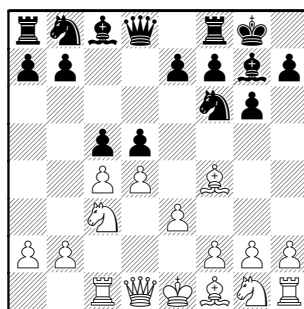
37...Kg8! 38.Nxf6+ Kf7



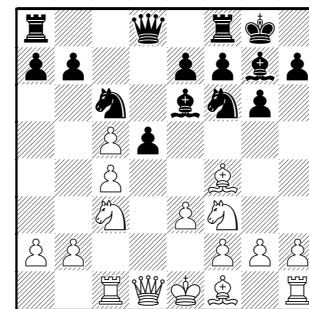
39.Nxg4 Qxg4 40.Qd7+



40...Kf6 1/2-1/2

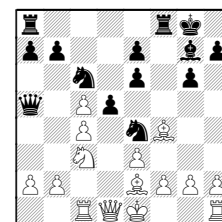
Spasov – Gufeld [D92]
Camaguey 19741.d4 Nf6 2.c4 g6 3.Nc3 d5 4.Bf4
Bg7 5.Rc1 0-0 6.e3 c5

7.dxc5 Be6 8.Nf3 Nc6=

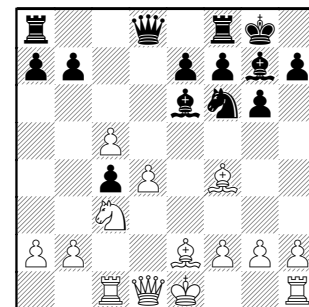
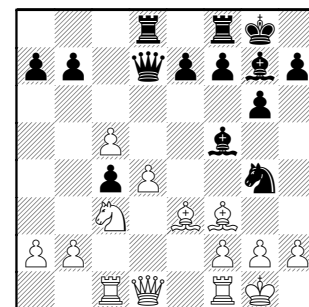


9.Nd4?! [9.Be2] 9...Nxd4

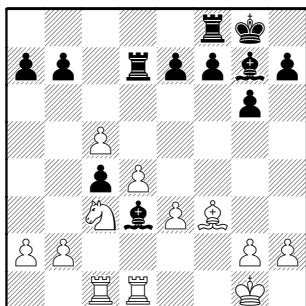
9...Qa5 10.Nxe6 fxe6 11.Be2 Ne4∞



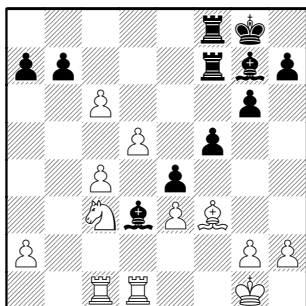
10.exd4 dxc4 11.Be2

11...Qd7! 12.0-0 Rad8 13.Be3
[13.Be5 Bh6!] 13...Ng4 14.Bf3 Bf5

15.Qa4 Nxe3 16.Qxd7 Rxd7
17.fxe3 Bd3 18.Rfd1

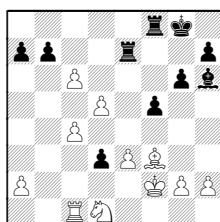


18...e5! 19.d5 f5 20.c6 Rdf7 21.b3!?
[21.d6 e4-+] 21...e4 22.bxc4



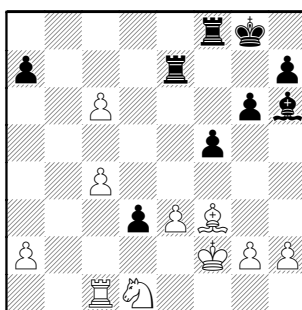
22...Bh6! 23.Rxd3 [23.Kf2 f4-+]
23...exd3 24.Nd1

24.Kf2 Re7 25.Nd1

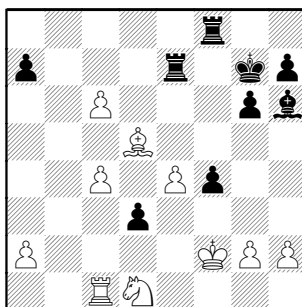


25...bxc6-+

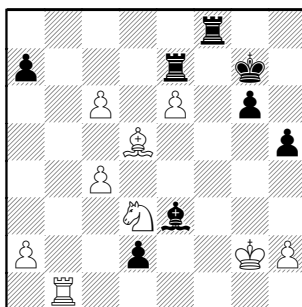
24...bxc6 25.dxc6 Re7 26.Kf2



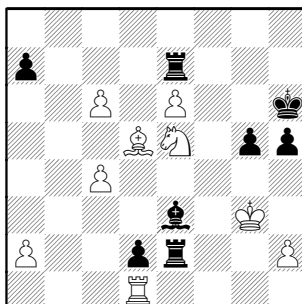
26...f4! 27.Bd5+ [27.e4 Bg7-+]
27...Kg7 28.e4



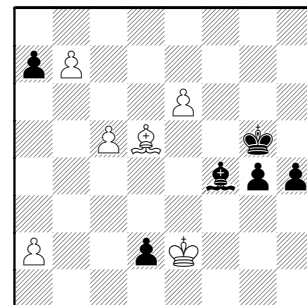
28...f3 29.Rb1 fxg2+ 30.Kxg2 Bf4
31.Nf2 d2 32.Nd3 Be3 33.e5 h5
34.e6



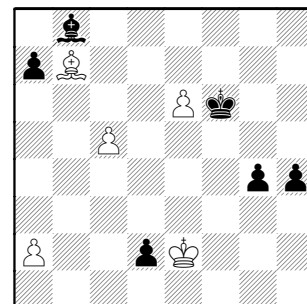
34...Kh6 35.Rd1 g5 36.Ne5 Rf2+
37.Kg3 Re2



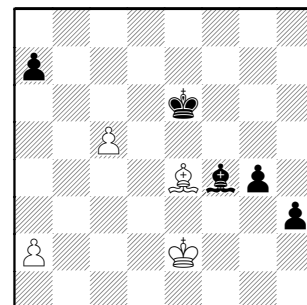
38.Nd3 Bb6 39.c5 Bc7+ 40.Kf3
Rxh2-+ 41.Ke3 g4 42.Nf2 Rxf2!
43.Kxf2 Bf4 44.Ke2 h4 45.Rb1 Kg5
46.Rb7 Rxb7 47.cxb7



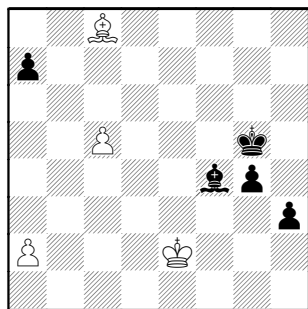
47...Kf6 48.b8Q Bxb8 49.Bb7



49...Ke7! 50.Be4 Kxe6 51.Kxd2
Bf4+ 52.Ke2 h3



53.Bb7 Kf6 54.Bc8 Kg5

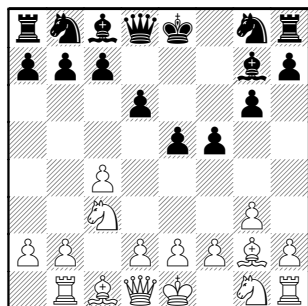


55.Be6 Kh4 56.c6 g3 0-1

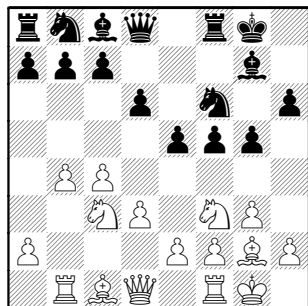
Raicevic – Gufeld
Belgrade 1974

[A26]

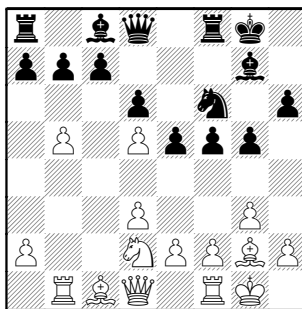
1.c4 g6 2.Nc3 Bg7 3.g3 e5 4.Bg2 d6
5.Rb1 f5



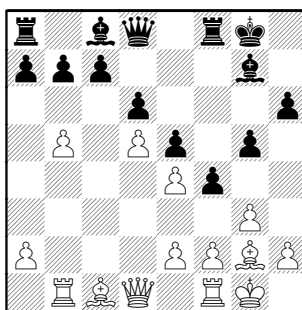
6.d3 Nf6 7.b4 0-0 8.Nf3 h6!? 9.0-0
g5



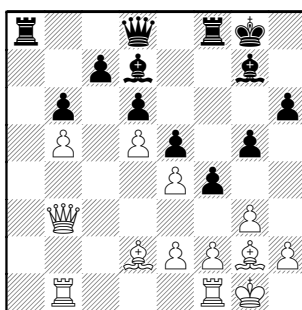
10.Nd5 Nbd7 11.b5 Nxd5 12.cxd5
Nf6 13.Nd2



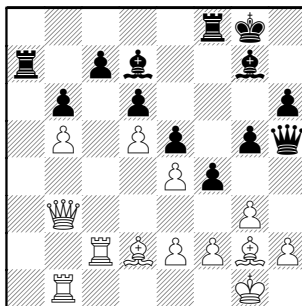
13...f4 14.Ne4 Nxe4 15.dxe4



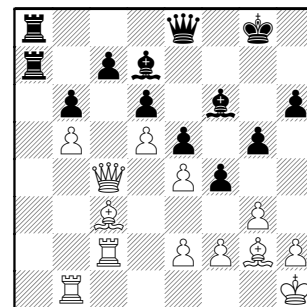
15...a6! 16.a4 [16.bxa6 Rxa6]
16...axb5 17.axb5 b6 18.Qb3 Bd7
19.Bd2



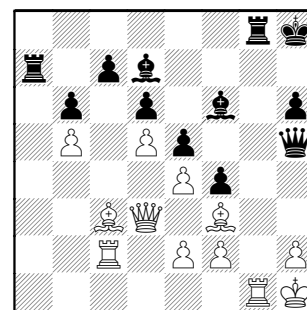
19...Qe8 20.Rfc1 Ra7 21.Rc4 Qh5
22.Rc2



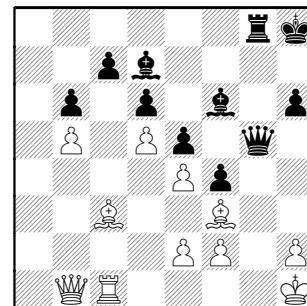
22...Rfa8 23.Qc4 Bf6 24.Bc3 Qe8
25.Kh1



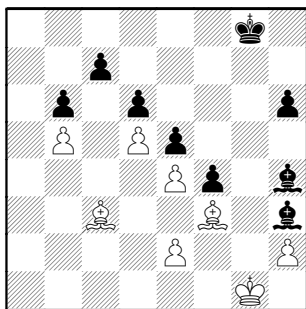
25...Kh8 [25...Kh7!?] 26.gxf4?! gxf4
27.Qd3 Qh5 28.Rg1 Rg8 29.Bf3



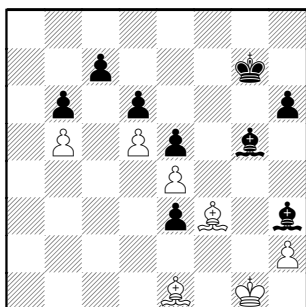
29...Rxg1+ 30.Kxg1 Qg5+ 31.Kh1
Ra8 32.Rc1 Rg8 33.Qb1



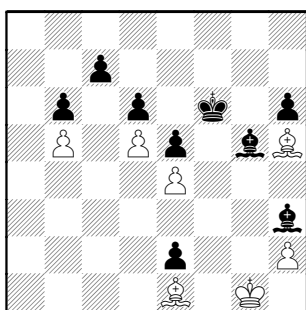
33...Qh4 34.Rf1 Bh3 35.Rg1 Qxf2
36.Rxg8+ Kxg8 37.Qg1+ Qxg1+
38.Kxg1 Bh4!-+



39.Bd2 Bg5? [39...Bd7+] 40.e3! fxe3
41.Be1 Kg7

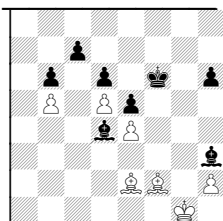


42.Bh5! Kf8 43.Bg3 Kg8 44.Be1
Kg7 45.Bg3 Kf6 46.Be1 e2

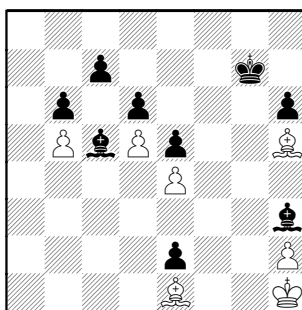


47.Kh1!!

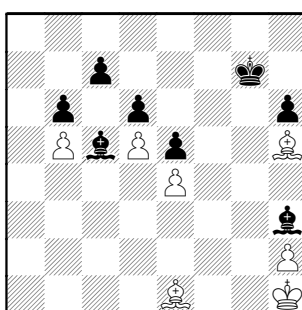
47.Bxe2 Be3+ 48.Bf2 Bd4+



47...Be3 48.Bh4+ Kg7 49.Be1 Bc5



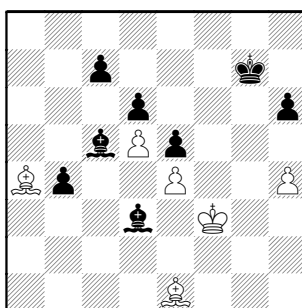
50.Bh4? [50.Bxe2] 50...e1Q+!-+
51.Bxe1



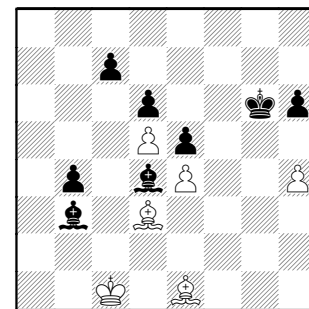
51...Bf1 52.h4 Bxb5

52...Bd3! 53.Bf3 Bxb5 54.Kg2 Bd3+

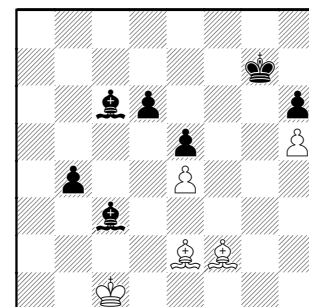
53.Kg2 Bd3 54.Kf3 b5 55.Be8 b4
56.Ba4



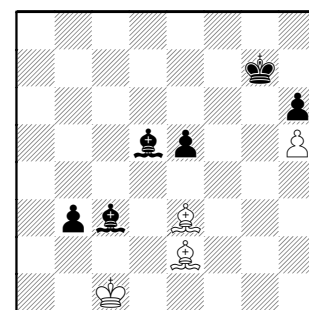
56...Bc4 57.Bc2 Ba2 58.Bd3 Bb3
59.Ke2 Kg6 60.Kd2 Bd4 61.Kc1



61...Bc3 62.Bf2 Ba4 63.Be2 c5
64.dxc6 Bxc6 65.h5+ Kg7



66.Bd3 b3 67.Be3 d5 68.exd5 Bxd5
69.Be2

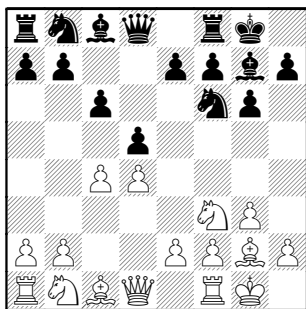


69...Be4 0-1

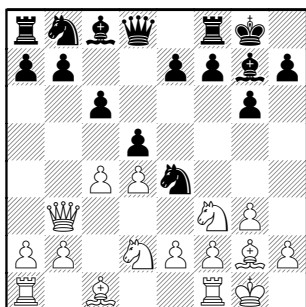
Vukic - Gufeld
Tuzla 1979

[D78]

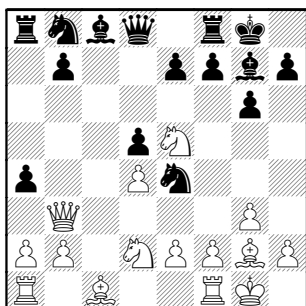
1.d4 Nf6 2.c4 g6 3.Nf3 Bg7 4.g3 0-0
5.Bg2 c6 6.0-0 d5



7.Nbd2 [7.cxd5] 7...Ne4 [7...Bf5]
8.Qb3

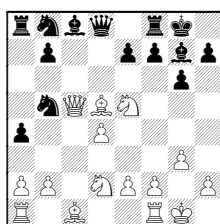


8...a5!? 9.cxd5 cxd5 10.Ne5 a4



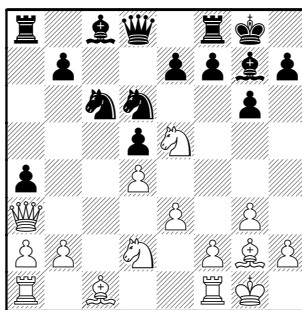
11.Qa3 [11.Qd3 Nf6; 11.Qe3 Nd6;
11.Qb4 f6!?] 11...Nd6! 12.e3?!

12.Bxd5 Nb5 13.Qc5

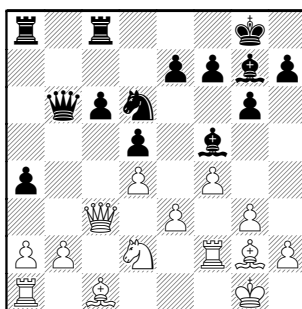


13...Nxd4! 14.Qxd4 e6

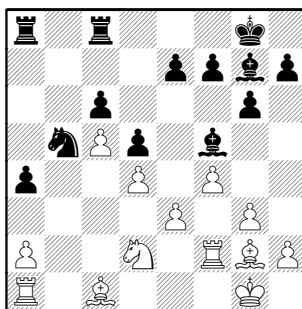
12...Nc6



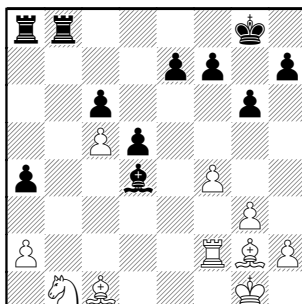
13.f4? Qb6 14.Nxc6 bxc6 15.Rf2
Bf5 16.Qc3 Rfc8-+



17.b4 Nb5 18.Qc5 Qxc5 19.bxc5

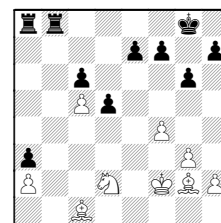


19...Nxd4! 20.exd4 Bxd4 21.Rb1
Bxb1 22.Nxb1 Rcb8!



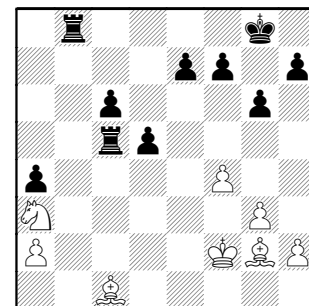
23.Na3

23.Nd2 a3! 24.Kf1 Bxf2 25.Kxf2

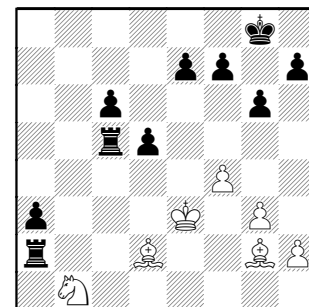


25...Rb2! 26.Bxb2 axb2-+

23...Ra5 24.Kf1 Bxf2 25.Kxf2 Rxc5



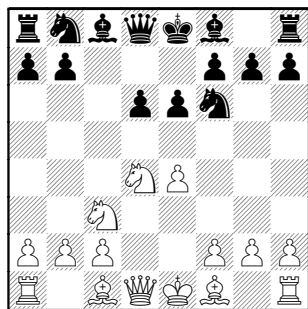
26.Bd2 Rb2 27.Ke3 Rxa2 28.Nb1 a3



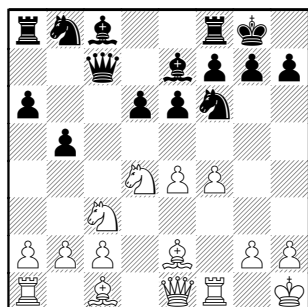
0-1

Chiburdanidze - Gufeld [B84]
Nikolaev 1981

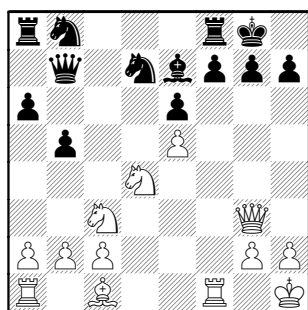
1.e4 c5 2.Nf3 d6 3.d4 cxd4 4.Nxd4
Nf6 5.Nc3 e6



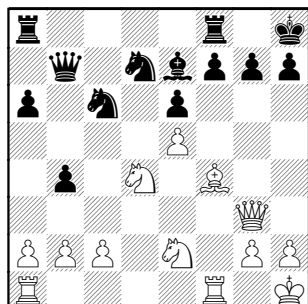
6.f4 a6 7.Be2 Be7 8.0-0 0-0 9.Kh1
Qc7 10.Qe1 b5=



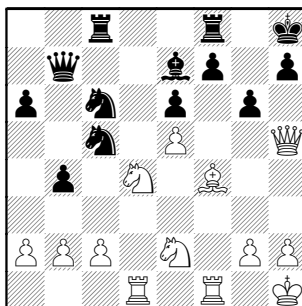
11.Bf3 Bb7 12.e5 dxe5 13.fxe5 Nfd7
14.Bxb7 Qxb7 15.Qg3



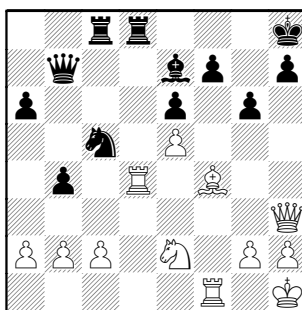
15...Kh8 [15...Qc7!; 15...b4 16.Bh6
g6 17.Bxf8 Bxf8] 16.Bf4 b4 17.Nce2
Nc6



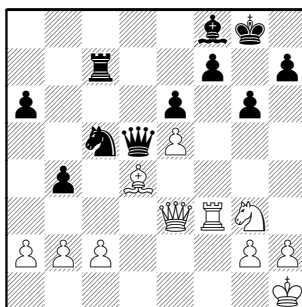
18.Qf3 Rac8 19.Rad1 Nc5 20.Qh5
g6



21.Qh3 [21.Qh6 Rfd8 22.Rf3 Bf8]
21...Nxd4 [21...Rfd8?! 22.Nf3!]
22.Rxd4 Rfd8



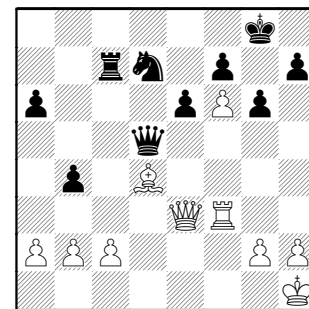
23.Be3 Rxd4 24.Bxd4 Kg8 25.Qe3
Bf8 26.Ng3 Rc7 27.Rf3 Qd5



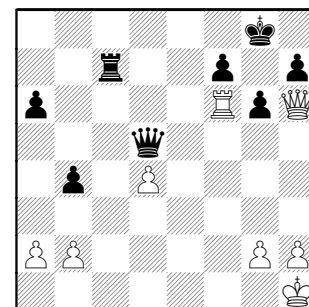
28.Nh5!? Bg7!!

[28...gxh5 29.Rg3+-;
28...Nd7 29.Qf4+-]

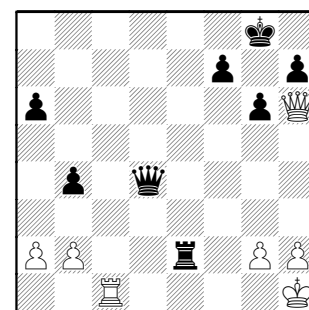
29.Nf6+?! [29.Nxg7 Kxg7] 29...Bxf6
30.exf6 Nd7-+



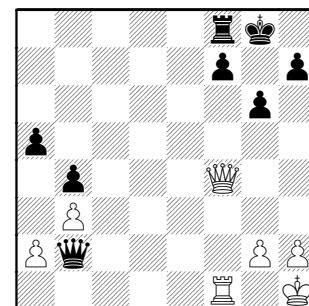
31.Qh6 Nxf6 32.c3 e5 33.Rxf6 exd4
34.cxd4



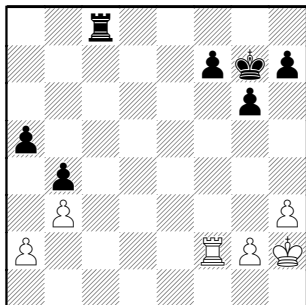
34...Qxd4 [34...Rc2!-+] 35.Rf1 Rc2
[35...Qxb2-+] 36.Re1 Re2 37.Rc1



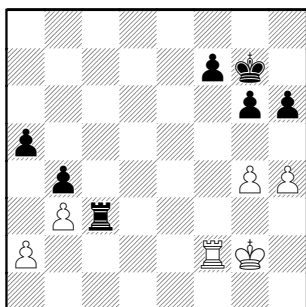
37...Re8? [37...Qg4!-+] 38.b3 Qb2
39.Qf4 a5 40.Rf1 Rf8



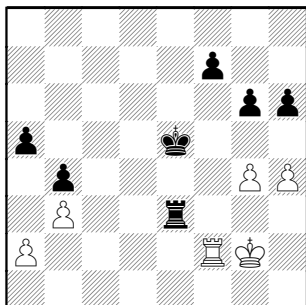
41.Qf2 Qxf2 42.Rxf2 Rc8 43.h3 Kg7
44.Kh2



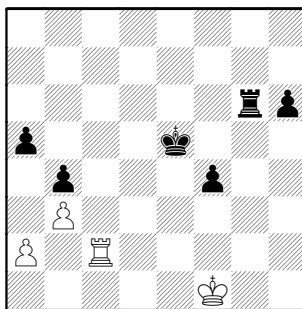
44...Rc5 45.g4 h6! 46.h4?! Rc3
47.Kg2



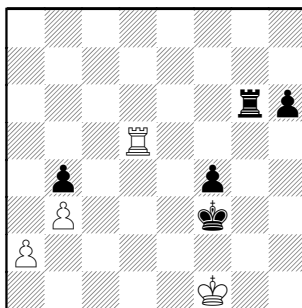
47...Re3! 48.Kh2 Kf8-+ 49.Rc2 Ke7
50.Kg2 Kd6 51.Rf2 Ke6 52.Rc2 Ke5
53.Rf2



53...f5 54.h5 f4 55.hxg6 Rg3+
56.Kf1 Rxg4 57.Rc2 Rxg6



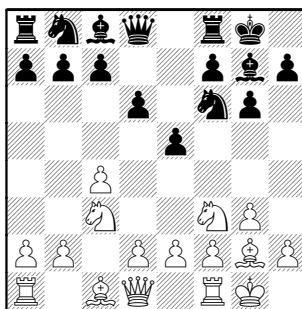
58.Rc5+ Ke4 59.Rxa5 Kf3 60.Rd5



60...Kg3! 0-1

Gufeld – Golubev [E67]
Alushta open 1993

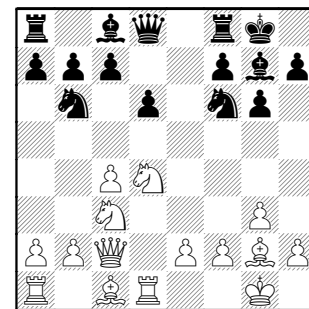
1.g3 e5 2.Bg2 d6 3.c4 Nf6 4.Nc3 g6
5.Nf3 Bg7 6.0-0 0-0



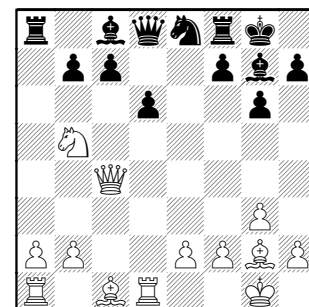
7.d4 Nbd7 8.Qc2 exd4

[8...Re8; 8...c6; 8...Qe7]

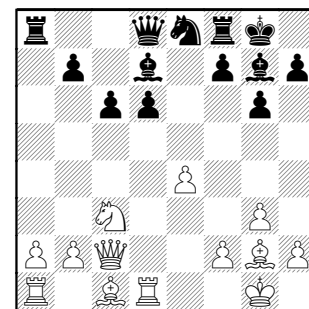
9.Nxd4 Nb6 10.Rd1!C



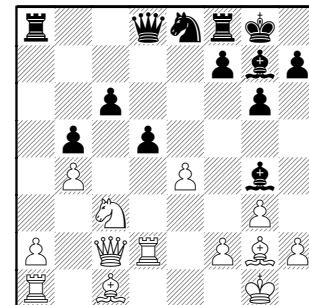
10...Nxc4 11.Ncb5 a6 12.Qxc4 axb5
13.Nxb5! Ne8



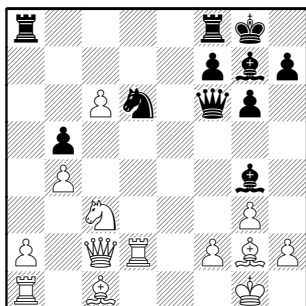
14.Qc2!! [14.Bf4] 14...Bd7 [14...c6
15.Nxd6 Nxd6 16.Bf4+] 15.Nc3 c6
16.e4



16...b5!? 17.b4! ΔBb2,Rd3,Rad1
17...Bg4 18.Rd2 d5

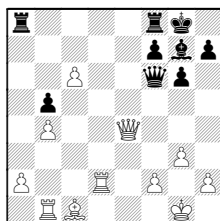


19.exd5 [19.h3 Be6 20.Bb2± Nc7]
19...Nd6! 20.dxc6 Qf6



21.Bb2

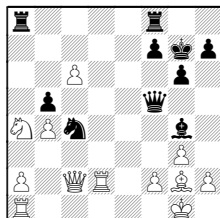
21.Rb1 Bf5 22.Ne4 Nxe4 23.Bxe4
Bxe4 24.Qxe4



24...Rfe8 25.Qc2 Qf3

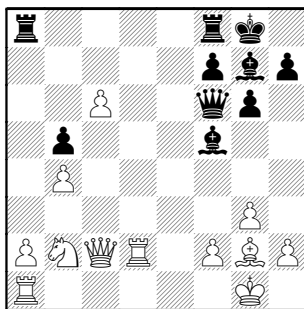
21...Nc4 22.Na4 [22.Nd1?? Bxd1-+]
22...Nxb2

22...Qf5 23.Bxg7 Kxg7

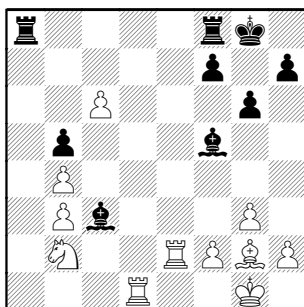


24.Qc3+ Kg8 25.Rd5+-

23.Nxb2 Bf5



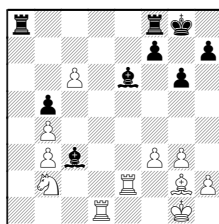
24.Qb3 [24.Qc5!?] 24...Qc3! ♖
25.Rad1 Qxb3 26.axb3 Bc3 27.Re2



27...Ra2

27...Bxb4? ôc;

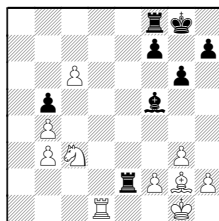
27...Bg4 28.f3 Be6



29.Rxe6!? fxe6 30.Nd3 ΔBh3,Nc5

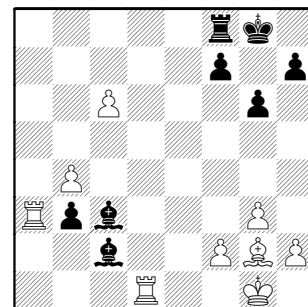
28.Na4! bxa4

28...Rxe2 29.Nxc3

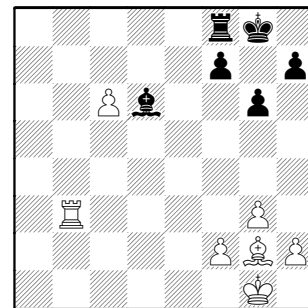


29...Rb2 30.Nd5+- (30.Bd5)

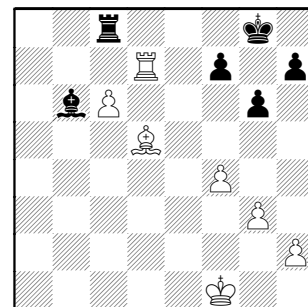
29.Rxa2 axb3 30.Ra3 Bc2



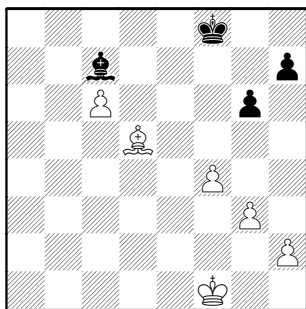
31.Rxb3! Bxb3 [31...Bxd1 32.Rxc3+-
] 32.Rd3 Bxb4 33.Rxb3 Bd6



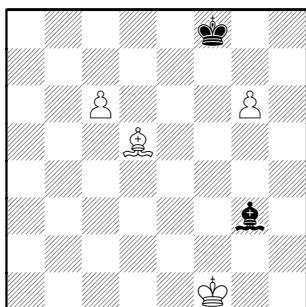
♞[Δ33...Ba5+- cf #35] 34.Rb7 Rc8
35.Rd7 Be5 36.f4 Bc7 37.Bd5 Bb6+
38.Kf1



38...Rc7 39.Bxf7+- Kf8 40.Rxc7
Bxc7 41.Bd5



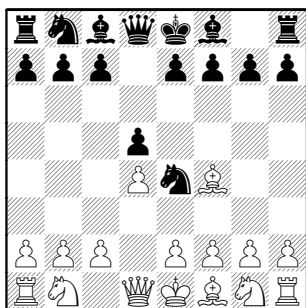
41...h6 42.h4 g5 43.fxg5 hxg5
44.hxg5 Bxg3 45.g6



Δ..Kd4,etc 1-0

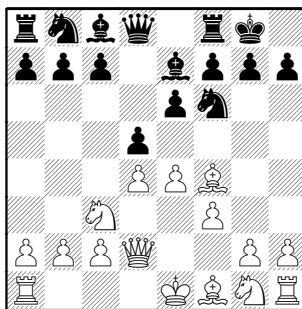
Cooper,A - Gufeld [A45]
Hastings 1993

1.d4 Nf6 2.Bg5 Ne4 [2...c5; 2...d5;
2...g6] 3.Bf4 [3.Bh4; 3.h4?!] 3...d5

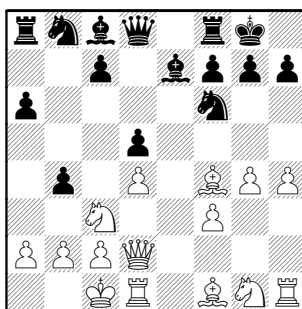


≤4.f3 [4.Nd2] 4...Nf6 5.Nc3 e6!!
ΔFrench Defense

6.e4 Be7 7.Qd2 0-0

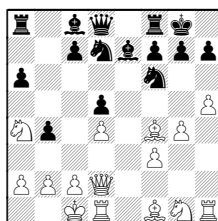


8.0-0-0 Δed / e5,...f4-5 8...a6! 9.exd5
[9.e5 Nfd7 Δc5!] 9...exd5! Δ..Ne8-
d6×Nc3 [≤9...Nxd5 10.Nxd5 exd5]
10.g4 b5 11.h4 b4



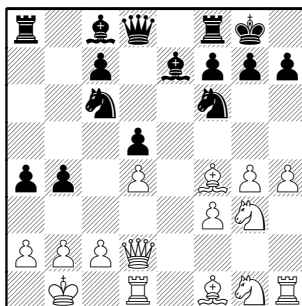
12.Nce2

12.Na4!? Nbd7 ΔBb7-c6 13.h5

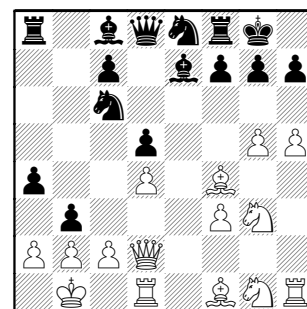


13...Bb7 14.Bd3! Bc6 15.Nc5 a5

12...a5 13.Ng3 a4 14.Kb1 Nc6C

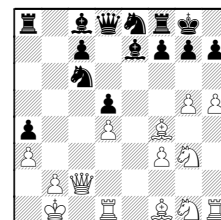


15.g5 Ne8 16.h5 b3!



17.a3 [17.axb3? axb3 18.cxb3 Nb4
Δc5,Qa5] 17...Nd6

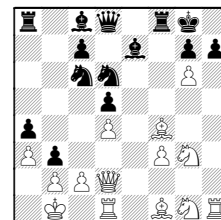
17...bxc2+ 18.Qxc2



18...Bxg5?! 19.Bxg5 Qxg5 20.Qxc6
Nd6 21.N1e2 Rb8 22.f4!

18.c3

≤18.g6 fxg6 19.hxg6

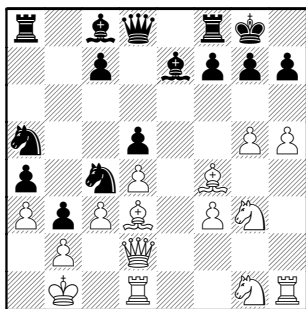


19...Rxf4! 20.Qxf4 Bg5 ×Qf4

18...Na5 19.Bd3

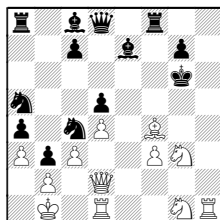
19.g6 Ndc4

19...Ndc4



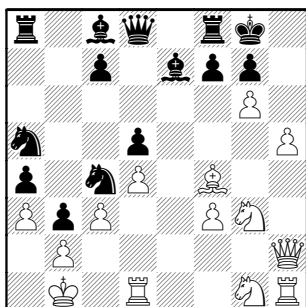
20.Bxh7+ [20.Qc1 Bxa3! 21.bxa3 b2-+]
20...Kxh7 21.g6+ Kg8

21...fxg6? 22.hxg6+ Kxg6

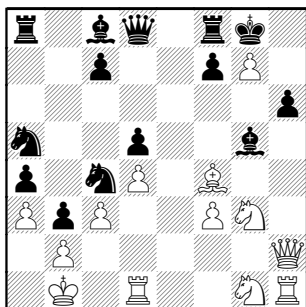


23.Qh2→

22.Qh2

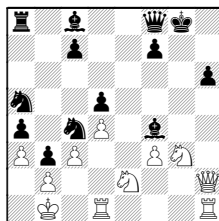


Δh6-xg7 22...Bg5□ 23.h6 gxh6
24.g7



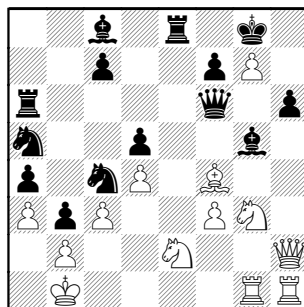
24...Re8

24...Bxf4?! 25.gxf8Q+ Qxf8 26.N1e2



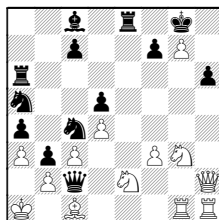
26...Bf5+
(26...Nxb2 27.Nxf4 Nxd1 28.Rxd1∞)
27.Nxf5! Bxh2 28.Rxh2∞

25.N1e2 Ra6! 26.Rdg1 Qf6! Δ..Qc2+



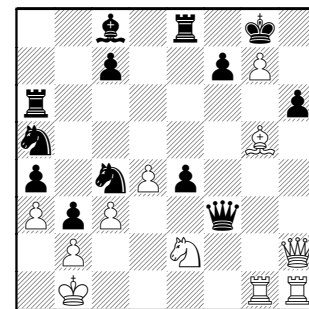
27.Ne4!

27.Bxg5 Qg6+ 28.Ka1 Qc2 29.Bc1



29...Nxa3 30.Bxh6?? Qb1+ 31.Rxb1
Nc2#

27...dxe4 28.Bxg5 Qxf3

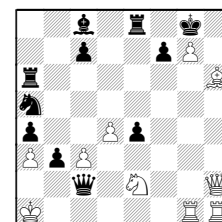


29.Bxh6 ΔB?,Qh8#

29.Rg3 -x d3 29...Qf5 30.Bxh6 e3+
31.Ka1 Nxa3!

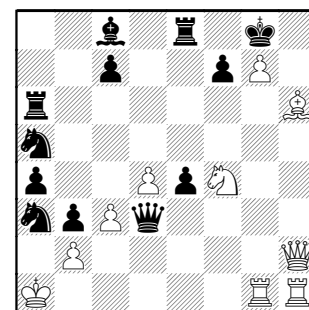
29...Nxa3+! [=29...Qd3+] 30.Ka1

30.bxa3 Qd3+ 31.Ka1 Qc2-+



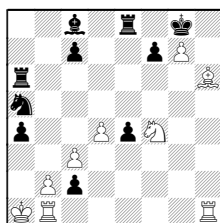
ΔQa2# / b2+-1(Q)#

30...Qd3 ΔQb1+,Nc2# 31.Nf4

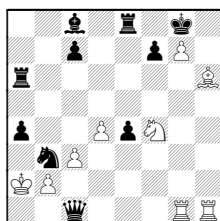


31...Nc2+

31...Qb1+ 32.Rxb1 Nc2+ 33.Qxc2
bxc2



34.Rbg1 Nb3+ 35.Ka2 c1Q

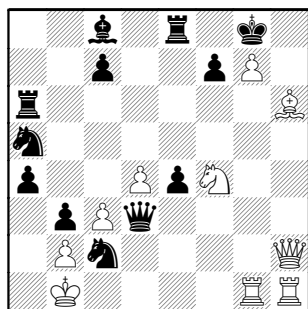


36.Nd5!?

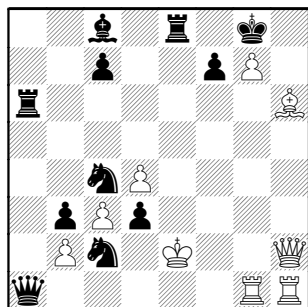
(36.Rxc1 Nxc1+ 37.Rxc1 Rxh6+
"Too vulgar for such an unusual
game")

36...Qxg1 (36...Rxh6?? 37.Nf6+! Rxf6
38.Rh8#; =36...Qxh6)

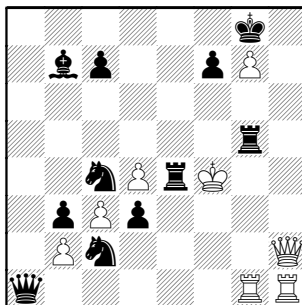
32.Kb1 Na3+ 33.Ka1 Nc2+ 34.Kb1



34...a3! 35.Nxd3 a2+ 36.Kc1 a1Q+
37.Kd2 Nc4+ 38.Ke2 exd3+



39.Kf3 Bb7+ 40.Kg3 Rg6+ 41.Bg5
ΔQh8# 41...Re3+ 42.Kg4 Rxc5+
43.Kf4 Re4+

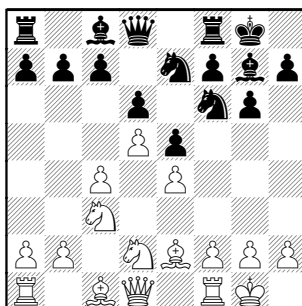


WHITE RESIGNED

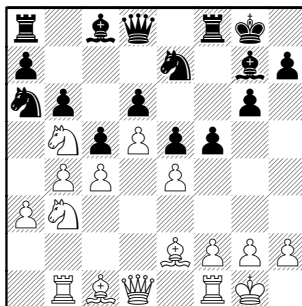
44.Kxg5 Qa5+ 45.Kh6 Re6+ 46.Rg6
Rxc6# 0-1

Browne,W - Gufeld [E97]
Los Angeles 1995

1.d4 Nf6 2.c4 g6 3.Nc3 Bg7 4.e4 0-0
5.Be2 [5.e5 Ne8] 5...d6 6.Nf3 e5 7.0-0
Nc6 8.d5 Ne7 9.Nd2

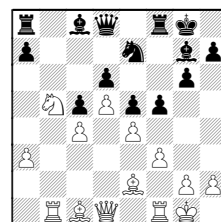


9...c5 [9...a5] 10.Rb1 Nd7 11.Nb5
Nb8!? [11...Qb6] 12.a3 f5 13.b4 Na6
14.Nb3 b6

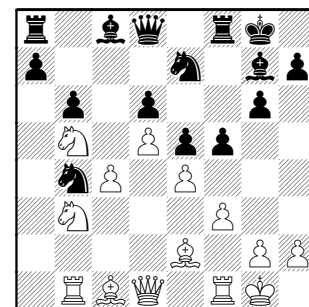


15.f3

Δ15.bxc5 ↑b 15...Nxc5 16.Nxc5 bxc5
17.f3∞

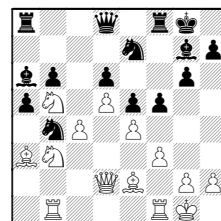


15...cxb4! 16.axb4 Nxb4



17.N3d4

17.Ba3 a5 18.Qd2 Ba6



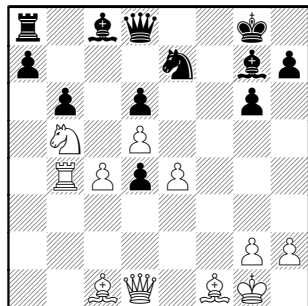
19.Bxb4 axb4 20.Qxb4 Bxb5 21.Qxb5
Bh6

17...exd4

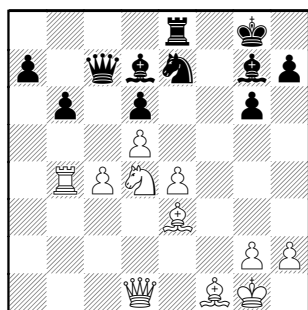
17...a5?! 18.Ne6
(18.Nc6 Qd7)

18...Bxe6 19.dxe6 -Xd5,♞

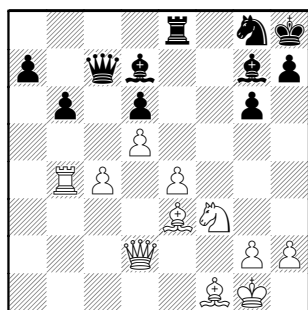
18.Rxb4 fxe4 19.fxe4 Rxf1+ 20.Bxf1



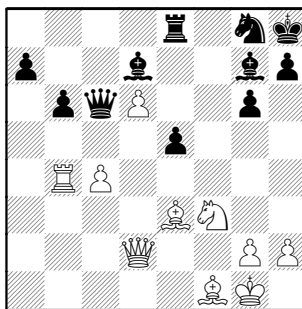
20...Bd7! 21.Nxd4 [21.Nxd6? Be5!]
21...Qc7 22.Be3 Re8 ΔNf5



23.Qd2 Kh8 ΔNg8-f6 24.Nf3! Ng8

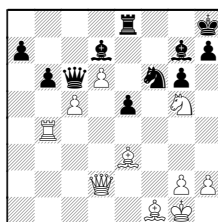


25.e5! dxe5 26.d6 Qc6



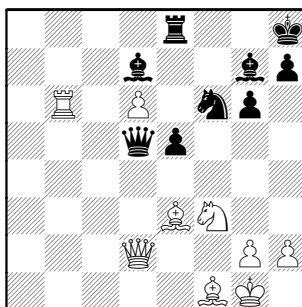
27.c5

27.Ng5 Nf6 28.c5



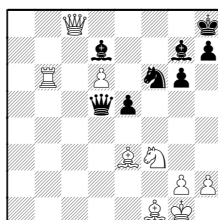
28...bxc5 29.Rh4 Rf8

27...Nf6! 28.cxb6 axb6 29.Rxb6
Qd5!



30.Ra6?⊕

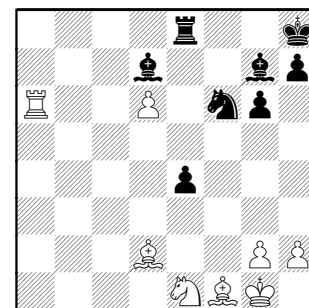
30.Qc2 Rc8 31.Qxc8+



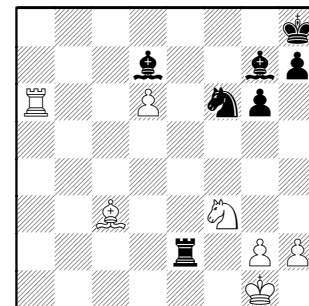
31...Bxc8 32.Rb8 Qc6 33.Nxe5 Qe8-
+;

○30.Bg5! Qxd2 31.Nxd2 e4

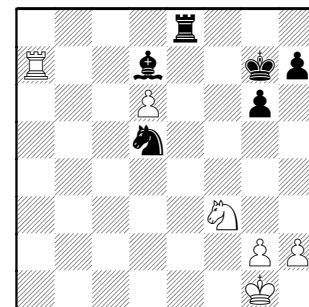
30...e4 31.Ne1 Qxd2 32.Bxd2



32...e3 33.Bc3 e2 34.Bxe2 Rxe2
35.Nf3



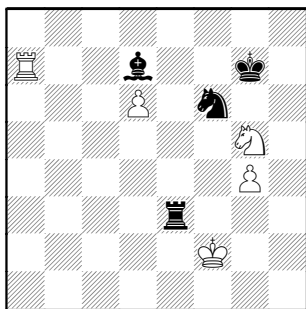
35...Nd5! 36.Ra8+ Re8 37.Bxg7+
Kxg7 38.Ra7



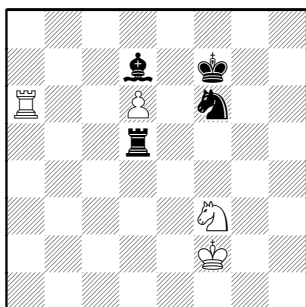
38...Nf6?

38...Rd8 39.Ne5 Nb6! 40.Rb7 Kf6-+

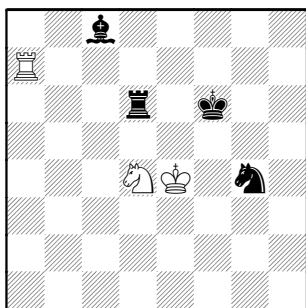
39.g4 g5 40.h4! [40.Nxg5 Kg6-+]
40...h6 41.hxg5 hxg5 42.Nxg5 Re3
43.Kf2



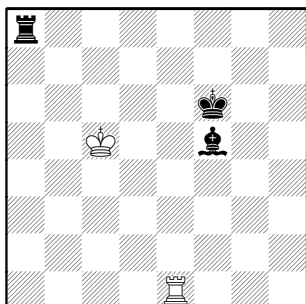
43...Nxg4+ 44.Kf1 Nf6 45.Kf2 Re5
46.Nf3 Rd5 47.Ra6 Kf7+



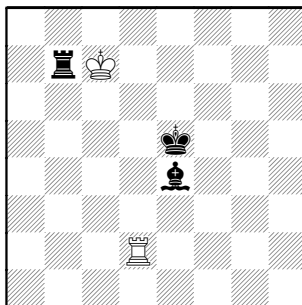
48.Ke3 Bf5 49.Nd4 Ng4+ 50.Kf4
Bc8 51.Ra7+ Kf6 52.Ke4 Rxd6



53.Rc7 Bd7 54.Rc1 Ra6 55.Kd5
Ne3+ 56.Kc5 Ra8 57.Re1 Nf5
58.Nxf5 Bxf5



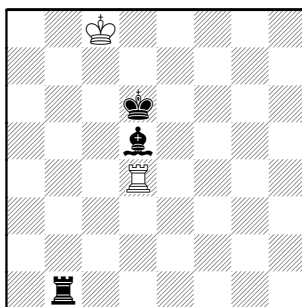
59.Rf1 Ke5 60.Re1+ Be4 61.Kb6
Rc8 62.Re2 Rc1 63.Re3 Kd4 64.Re2
Rb1+ 65.Kc7 Ke5 66.Rd2 Rb7+



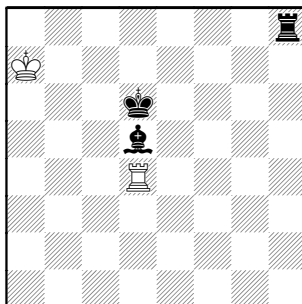
67.Kc8?

67.Kd8 ΔKe8–f8 DRAW BY taking
opposite color of B square f8 (here)
and White Rook covers f7.

67...Rh7 68.Kb8 Bd5 69.Rd1 Kd6
70.Rd2 Rb7+ 71.Kc8 Rb1 72.Rd4



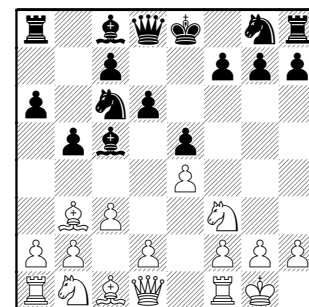
72...Rh1 73.Kb8 Rh8+ 74.Ka7



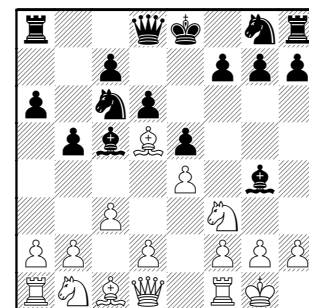
74...Kc5 0-1

Gufeld – Balinas [C70]
USA Sr, Las Vegas, 1995

1.e4 e5 2.Nf3 Nc6 3.Bb5 a6 4.Ba4
Bc5 5.0-0 b5 6.Bb3 d6 7.c3

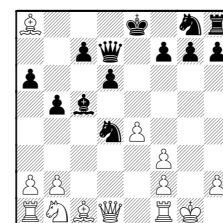


7...Bg4?! [7...Nf6] 8.Bd5!



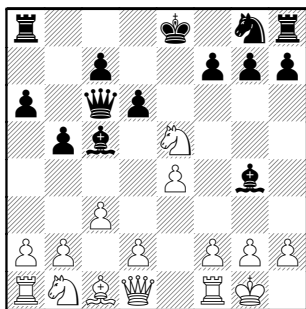
8...Qd7 [8...Nge7?? 9.Bxf7+!+-]
9.Bxc6!

9.d4!? exd4 10.cxd4 Nxd4? 11.Bxa8
Bxf3 12.gxf3

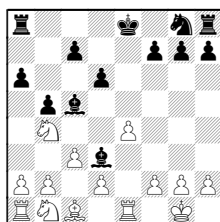


12...Qh3 13.e5

9...Qxc6 10.Nxe5

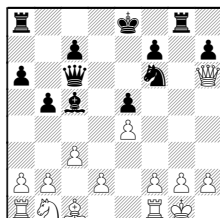


10...dxe5

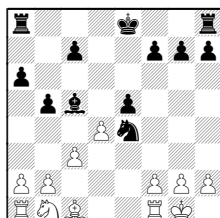
10...Bxd1? 11.Nxc6 Be2 12.Re1 Bd3
13.Nb4±

11.Qxg4 Nf6 12.Qg3!

A) 12.Qxg7?? Rg8 13.Qh6

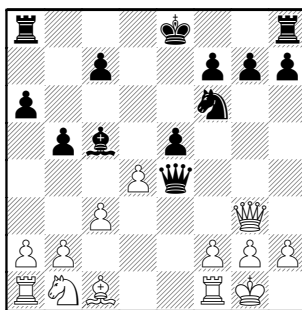


13...Rxb2+ 14.Kxb2 Qxe4+-;

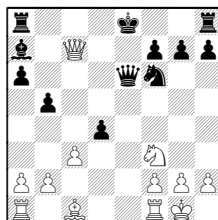
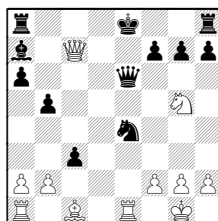
B) ≤12.Qe2 Qxe4 13.Qxe4 Nxe4
14.d4

14...exd4 15.Re1 f5 16.f3 dxc3±

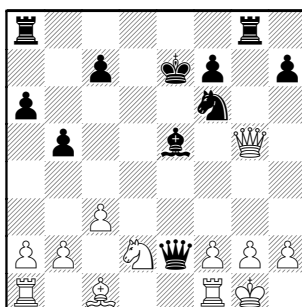
12...Qxe4 13.d4



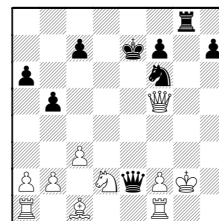
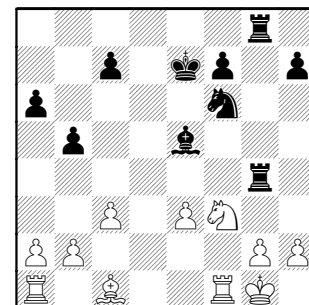
13...Bd6

13...exd4 14.Qxc7 Ba7 15.Nd2 Qe6
16.Nf316...dxc3 (16...0-0 17.cxd4±) 17.Re1
Ne4 18.Ng5

18...Bxf2+ 19.Kf1± (19.Kh1? Ng3+-+)

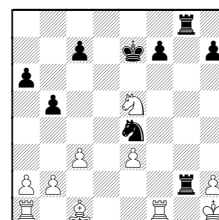
14.Nd2 Qe2! 15.Qxg7! Ke7 16.dxe5
Bxe5 17.Qg5! ΔNf3 17...Rhg8

18.Qe3!?

△18.Qf5! Bxh2+? 19.Kxh2 Rxb2+
20.Kxg2 Rg8+21.Kh1 (21.Kh3? Rg6) 21...Rg4
(21...Rg6?! 22.Qh3!)22.b3!! Rh4+ 23.Kg2 Rg4+ 24.Kh3 b4
25.Ba3!!+-18...Qxe3 19.fxe3 Rg4 20.Nf3
Rag8!?

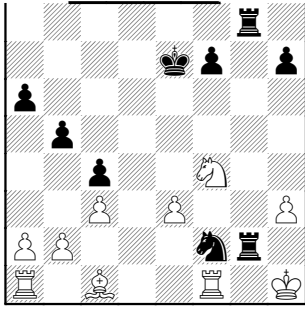
21.Rf2

21.Nxe5? Rxb2+ 22.Kh1 Ne4



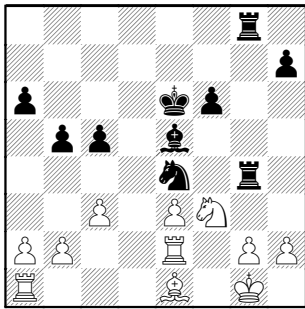
ΔRg1+,Nf2#

23.Nd3 c5! 24.h3 c4 25.Nf4 Nf2+



26.Rxf2 Rxf2 27.b3 Rf1+ 28.Kh2 Kd7
ΔRgg1

21...Ke6 22.Bd2 Ne4 23.Re2 c5
24.Be1 f6



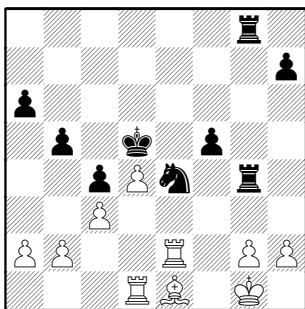
25.Rd1

25.a4?! Nd6 26.axb5 axb5 ΔRa4

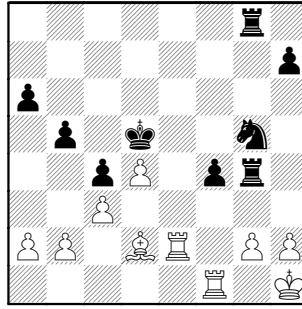
25...Bc7 26.Rd3 c4?! ×d4

26...Bb6 27.c4!? bxc4 28.Ra3 Ra8
29.Rc2±

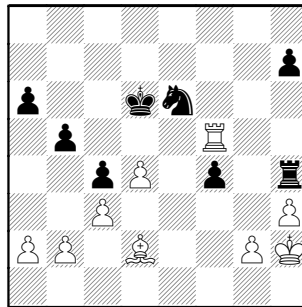
27.Rd4! f5 [27...Bb6? 28.h3+--]
28.Rd1± Bb6 29.Nd4+ Bxd4
30.exd4 Kd5



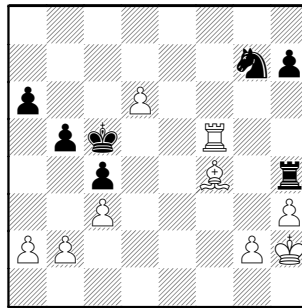
31.Bd2 f4 32.Rf1+- Ng5 33.Kh1



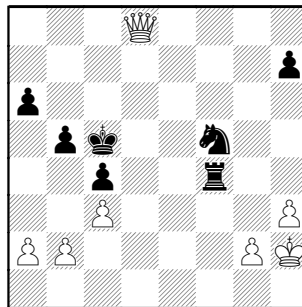
33...Ne6 [33...f3 34.Re5+ Kd6
35.g3+-] 34.h3+- Rh4 35.Ref2 Rf8
36.Kh2 Rf6 37.Re1 Rf5 38.Rfe2 Rh6
39.Re5+ Rxe5 40.Rxe5+ Kd6 41.Rf5
Rh4



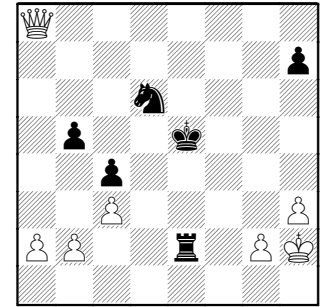
42.d5 Ng7 43.Bxf4+ Kc5 44.d6+



44...Nxf5 45.d7 Rxf4 46.d8Q



46...Nd6 47.Qg5+ Rf5 48.Qe3+ Kd5
49.Qa7 Re5 50.Qxa6 Re2 51.Qa8+
Ke5



52.b3 1-0

Now doesn't that whet your appetite for some *real* chess? GM Gufeld's sacrifices come as easily as a patzer's Pawn moves...and as naturally. Once the combination is started, it all seems so obvious.

But his autobiographical works are much more than a showcase for his chess talent. His love for the game, love for the fianchettoed Bishop, his delight in pranking his fellow players all come through as he describes the environment in which each game was played. You only get that in the books.

Enjoy some more with a purchase from the out-of-print offerings:

My Life in Chess, Eduard Gufeld, International Chess Enterprises, Seattle WA, 1994, 305 pages.

Chess: The Search for Mona Lisa, Eduard Gufeld, B.T.Batsford, London, 2001, 254 pages (with index)

The following article which appeared in the New York *Journal* of August 4th, must be of the greatest interest to all chess players. It puts the question before the people whether it is wise or unwise to play the royal game. It argues its side of the question with great force, and, to an extent, it denounces the practice of our pastime. The crucial point of the argument is whether playing chess, by easily gratifying ambition, lessens the impetus for accomplishment of difficult work. There are many points of view from which this problem might be seen. Our readers will enjoy what the accomplished editor in chief of the New York *Journal* has said on this subject, even though they might not fully agree with him.

AMBITION FALSELY GRATIFIED DOES HARM.

In the last column of this page you will read an article by the champion chess player of the world, Mr Emanuel Lasker.

Mr. Lasker's letter replies to an editorial published some time ago. He was good enough to bring the letter to this office himself. We write here what was said to him in reply to his argument in favor of chess and against the *Evening Journal's* assertion that the greatest of all games can be extremely harmful.

Mr. Lasker replies to our attack on chess by saying that the making of money is not everything. It is not everything. There is infinitely more energy and time wasted in foolish, stupid money-making than at the game of chess.

But even the dullest kind of money-making is often productive of something.

Wealth is produced or distributed. Employment is created.

But all this is aside of the mark. This is the argument that we offered to Mr. Lasker, and which we now offer to you

The moving power in humanity is a strange thing that we call ambition.

We have in us three fundamental attractions or passions – call them what you will. First is the instinct of self-preservation, which makes us keep alive and stay here on this earth.

The second is the instinct of the family, of paternity, which provides for generations to succeed us, when we go,

Third, is ambition, which causes progress.

That strange thing, ambition, exists, big or little, in all of us

It is ambition that causes the savage girl to stick a piece of bone through the cartilage of her nose. She wants to look handsomer.

And it is ambition that makes the man lose his life trying to manage a flying machine.

Our instinctive love of life keeps us here. Our love of the family provides endless generations. Ambition has lifted us from the lowest savagery to our present plane, and it will lift us eventually to real civilization, to the realization of our high destiny on this earth.

Ambition is the tool with which divine wisdom forces men onward. It is the eternal, restless element in our being that compels us constantly to fresh effort.

The greatest things that have been done by man have not helped him. or made him any happier individually, except in as much as they have gratified the restless ambition that will be satisfied.

Marvelously does the cosmic mind work in forcing us to use our powers in useful ways.

Ambition is the craving for recognition from our fellow-men. And, almost without exception, the man of ambition is compelled to make his mark by helping his fellows.

The unknown genius that gave us the law of gravitation and the differential calculus gratified a pure ambition by adding to human knowledge and giving a new conception of the grandeur of the universe.

We say to Mr. Lasker and to others that too close attention to chess is bad for the individual and for humanity, because it gratifies ambition without a useful result.

Anything that satisfies man's ambition without forcing him to help his fellow-men is a detriment to him and a detriment to the race.

Mr. Lasker is a man of unusual force. The nation is proud to possess his mind, so farseeing and capable.

No one questions his right to devote himself to the complicated, difficult, abstract chess problems if he chooses. But we question whether a mind as good as his ought not now, even by compulsion, to be put at other work.

We can spare him, perhaps, to gratify our national vanity by conquering all other minds in his line of effort.

But who knows what the brain inside that broad forehead might have achieved ? Who knows what real problems of this earth, what questions important to his fellow-men it might have solved, had Lasker dealt with the surface of the earth, the men and the forces on it, instead of dealing with the surface of the chessboard, with the unreal creatures and the arbitrary moves of that visionary kingdom?

Whatever you do, reader, develop your ambition, and see that it works in useful lines.

There is in you only a certain amount of force. The days are drifting rapidly behind you; your chance to do something worth while gets smaller and smaller.

Save your real strength for your real work.

Nurse your ambition and determine in our mind that, big or little, powerful or weak, it shall at least work along the lines intended, and use its powers for the benefit of the other human beings fastened to this little earth with you..

We have before us real problems enough, of life and death, of poverty and politics to solve without putting our minds on the right-angle idiocy of a knight, the diagonal possibilities of a bishop or the irritating uncertainties of a queen on the chessboard. The earth is our chessboard, and to checkmate evil should be our game.

=====

The compliment above paid to Mr. Lasker is highly appreciated by him. He is proud to live among a great, generous and progressive people, glad to be one of their workers and more than gratified when they look upon him as one of their own.

=====

Whether chess is a game worth the time it costs or not is the question which we do not at this moment propose to investigate. But if it should be granted that chess has a *raison d'être*, the labor of a chessmaster cannot be wholly lost. In him is crystallized the accomplishment of a generation, his brain is, if not the motive power, at least the vehicle of evolution in chess. And he gives pleasure to many thousands. This is by far more than it is given to the average being to accomplish. And to demand of a man more than an average share of work, the people have no justification.

Such appears to be the fundamental meaning of all law. This is the one limitation imposed upon the power of the people, and it is founded on justice.

Lasker's Chess Magazine, July 1906, pp.128-130.

SANITY AND CHESS

The announcement that Dr. Astikoff, of Windiski, has succeeded in isolating the bacillus of insanity is of special interest to the chess playing community, partly because the doctor is one of the most skilful of the Russian masters having more than held his own in private matches with Tschigorin, Bernstein and others, and partly because the discovery at last explains the unfortunate prevalence of insanity among the devotees of the chequered board. Dr. Astikoff states that the new bacillus is square, or cubical, in this respect differing from the common bacilli, which are always globular, discoid, spiral or amorphous; it is common to

every human being, from the infant to the centenarian, but, happily, as a rule, in an inactive form; is found alike in the educated and the illiterate, in the athlete, the invalid and the imbecile. This is a striking confirmation of the old saying that we are all mad, the difference being only in degree. In the brain of the normal infant the embryo bacillus consists of a single square flake, which grows by monthly additions of red and white layers, until it attains the form of a perfect cube, consisting of 64 laminations. It then enters a comatose state, causing, in ordinary cases, no further trouble, but probably its potency for mischief is never completely destroyed until the death of its host. The adult microbe is fissiparous, and when irritated by mental worry or excessive indulgence in chess, it increases by separating at the junction of the red and white laminations. This is the first, or curable, stage of insanity, but should the irritation continue until the third generation of bacilli appears, the malady is no longer amenable to curative treatment. The history of Dr. Asitkoff's discovery is one of the romances of science. His early researches elicited the fact that among the cave dwellers of the stone age the ratio of insanity was only .1 per cent. The average of modern civilized nations being 1 per 1000 of the population, whereas his statistics give the enormous proportion of 1000 per 1,000,000 among the members of the Windiski Chess Club. These figures convinced the professor that there is something about rectangular forms that irritates the brain centres and produces insanity. His first experiment was the introduction of circular chess boards, with round squares in the Windiski Chess Club. The innovation caused great dissatisfaction, and the membership rapidly dropped to 100,000. But the doctor's action has been fully justified, for there are only 100 of the present members who are non-composmentis. The latest pronouncement of Dr. Asitkoff is that "the modern city must be rebuilt if civilization is to continue; the square and the angle must be superseded by the dome and the crescent; the line must be replaced by the curve; and the straightest street must be no straighter than the 'street which is called straight.' Insane asylums must be remodelled at once, for 'confinement in a square cell will rapidly change a lunatic to a madman.' It seems likely that Windiski will become the Mecca of the mental cripple, for ever increasing crowds are wending their way thither, and the burden of their cry is, 'Doctor Ivan Astikoff, can you cure me? Ah-tishoo!'"

Lasker's Chess Magazine, July 1906, pp.132-3.

As a special service to our friends at local chess clubs, we offer this section for your announcements, free of charge.
Announcements should be sent to the Bulletin Editor no later than the third week of the month, as publication is scheduled for the fourth week.

October 7 - 3rd Coast CXR Open

University of Chicago's Quadrangle Club, 1155 E. 57th Street Chicago, IL 60637

Limited to first 50 players

5-round SS, Game 30 (CXR Rated) Registration: 10:00 - 10:30 AM

Rounds: Rounds 1 at 11:00 PM, rest ASAP

1 Section: Open Prize fund: \$500 (b/40) \$150, 125, 100, 75, 50

Entry Fee: \$25 postmarked by September 28 Online entry \$25 by Oct. 1, \$30 after

=====

October 21 - Knights Quest

Renaissance Hotel, 933 Skokie Blvd, Northbrook

Limited to first 50 players

4-round SS, Game 30 (USCF & CXR Rated) Registration: 12:00 - 12:30 PM

Rounds: Rounds 1 at 1:00 PM, rest ASAP

Open (Juniors & Adults) Scholastic U1200 (Juniors Only U800)

Awards: Top 5 each section - All others participation medal

Entry Fee: Mailed entry \$20 postmarked by Oct. 12 Online entry \$20 by Oct. 15, \$25 after

\$5 discount to Renaissance Knights & Junior Knights members

=====

November 11- Knights Quest

Renaissance Hotel, 933 Skokie Blvd, Northbrook

Limited to first 50 players

4-round SS, Game 30 (USCF & CXR Rated) Registration: 12:00 - 12:30 PM

Rounds 1 at 1:00 PM, rest ASAP Open (Juniors & Adults) Scholastic U1200 (Juniors Only U800 (Juniors Only)

Awards: Top 5 each section - All others participation medal

Entry Fee: Mailed entry \$20 postmarked by Nov. 2 Online entry \$20 by Nov. 5, \$25 after

\$5 discount to Renaissance Knights & Junior Knights members

=====

December 9 - Knights Quest

Renaissance Hotel, 933 Skokie Blvd, Northbrook

Limited to first 50 players 4-round SS, Game 30 (USCF & CXR Rated) Registration: 12:00 - 12:30 PM

Rounds 1 at 1:00 PM, rest ASAP

Open (Juniors & Adults) Scholastic U1200 (Juniors Only) U800 (Juniors Only)

Awards: Top 5 each section - All others participation medal

Entry Fee: Mailed entry \$20 postmarked by Nov. 30 Online entry \$20 by Dec. 3, \$25 after

\$5 discount to Renaissance Knights & Junior Knights members

RKNIGHTS CHESS WORKSHOPS

GM Mark Paragua & NM William Aramil

Renaissance Hotel, 933 Skokie Blvd Northbrook, IL

Knights Workshops are being held before our very successful Knights Quest Tournaments

(2 Hours-10:15-12:15) - Sep. 23, Oct. 21, Nov. 11, & Dec 7.

Grand Master Mark Paragua: players rate 1400 & above

National Master William Arami: players ranked below 1400.

Workshops are open to all ages. You can enter by mail, on-line, or at the workshop.

OCTOBER 21 - KNIGHTS WORKSHOP

GM MARK PARAGUA & MASTER WILLIAM ARAMIL

NOVEMBER 11- KNIGHTS WORKSHOP

GM MARK PARAGUA & MASTER WILLIAM ARAMIL

DECEMBER 9 - KNIGHTS WORKSHOP

GM MARK PARAGUA & MASTER WILLIAM ARAMIL

Questions: David Heiser Tel: 773-844-0701

www.chesscountry.com

"As a long time CICL participant it is my pleasure to announce that ChessCountry is offering discounts to all CICL members. CICL members will be able to get 30% off on all BadBishop DVDs and 25% off on all other products (books, clocks, software, etc). ChessCountry is an authorized North American dealer for both BadBishop and Convekta (producers of Rybka, CT-ART, Chess Assistant).

I can unequivocally state that the BadBishop DVDs are simply superb. Players of all strengths will benefit from the thorough and easy to follow explanations of some of the UK's strongest players such as GM Murray Chandler, GM Tony Kosten, and IM Andrew Martin. These DVDs are a perfect medium in that they can be viewed via a standalone player, laptop, or on a workstation (possibly side by side with a database program!). They are an invaluable tool for absorbing and retaining chess knowledge. ChessCountry is the driving force behind these DVDs and more are in the works including one by former world champion cycle finalist GM Nigel Short. All DVD titles and other products can be found at the ChessCountry store.

Look for a short sample clip of the DVDs on YouTube. But even if you don't see the clip you won't go wrong by ordering these DVDs. If you decide to order simply indicate your CICL membership to receive your discount. Enjoy!

Best in chess,

Pete Stein