

## ***The Chicago Chess Player***

**The Official Bulletin of the Chicago Industrial Chess League**

### **GM Nikola Mitkov instructs and plays at the 2009 CICL Awards Banquet**



Photograph courtesy of Wayne Ellice

Also in this issue: Game Of the Month from our Games Editor (and other annotated games)  
Announcements for USCF-rated tournaments being hosted by our member clubs!  
CICL Banquet Wrapup  
Alphabetical Final Rating List with Playoff match results and CICL Open results

## CICL Officer Contact List

League President	<b>Tony Jasaitis</b>		C:(708) 903-6423
	President@ChicagoChessLeague.org		W:(312) 264-2044
League Secretary	<b>Jerry Thomas</b>	745 Hageman Pl	H:(630)420-0188
	Secretary@ChicagoChessLeague.org	Naperville, IL 60563	
League Treasurer	<b>Paul Freidel</b>	359 N. Worth Avenue	C:(224)436-6050
	Treasurer@ChicagoChessLeague.org	Elgin, IL 60123	
Bulletin Editor/Webmaster	<b>Marty Franek</b>	9044 S. 51 <sup>st</sup> Avenue	H:(708) 636-3714
	Bulletin@ChicagoChessLeague.org	Oak Lawn, IL 60453	
	Web@ChicagoChessLeague.org		
Games Editor	<b>Tom Friske</b>	1035 E Algonquin Road	H:(847) 299-1033
	Games@ChicagoChessLeague.org	Des Plaines, IL 60016	W:(847) 914-8448
Ratings Chairman	<b>Art Olsen</b>	714 E Algonquin Road J102	H:(847) 437-9819
	Ratings@ChicagoChessLeague.org	Arlington Heights, IL 60006	W:(847) 719-8036
		FAX : to SBS OTS, 22NW0644-5 at (847) 719-8151	
Trophy Chairman	<b>Mia Pillarella</b>		
	Trophy@ChicagoChessLeague.org		
Publicity Chairman	<b>Matt Vail</b>		C:(312) 933-1516
	Publicity@ChicagoChessLeague.org		W:(630) 505-6557
Banquet Chairman	<b>Katherine Zack</b>		
	Banquet@ChicagoChessLeague.org		

DIVISIONAL CHAIRMEN

East Division	<b>Adam Muhs</b>		C: (847) 877-9629
	ChairmanEast@ChicagoChessLeague.org		W: (312) 497-1184
West Division	<b>Irwin Gaines</b>		
	ChairmanWest@ChicagoChessLeague.org		
North Division	<b>Jim Thomson</b>		W(847) 538-5408
	ChairmanNorth@ChicagoChessLeague.org		

## Mark Your Calendars with These Key League Dates:

<b>Spring Business Meeting</b>	3.5 Weeks Before Playoffs (April 14, 2010)
<b>Season Playoffs</b>	Second Saturday of May (May 8, 2010)
<b>CICL Open</b>	Second Saturday of May (May 8, 2010)
<b>League Awards Banquet</b>	First Friday of June (June 4, 2010)

Officer Contact List	2
Contents of Issue	3
CICL EMAIL ALIASES	4
2009 Banquet Summary	6
USCF Tournaments being hosted by our member clubs	8
Game of the Month - by Games Editor Tom Friske	9
Games as Reviewed by Tom Friske	17
Updated Final Rating List from 2009 with playoff and CICL Open results	25



Photo courtesy of Wayne Ellice  
Mack Smith and Matt Vail contemplating their next moves against GM Nikola Mitkov (FIDE 2525) at the CICL annual awards banquet on June 5, 2009.

Email Directory**CICL EMAIL ALIAS DIRECTORY (Officers in red)**

<b>Alias</b> (@chicagochessleague.org)	<b>Sends to what entity</b>	<b>Actual people mailed</b>
Banquet	<b>Banquet Chairperson</b>	<b>Katherine Zack</b>
BlueKnights	Blue Cross Blue Shield team captains	Aaron Burgess (primary), Sonny Mata
BPMolex	BP/Molex Captains	Vic Zaderej (primary), Dan McGowan
Bulletin	<b>Bulletin Editor</b>	<b>Marty Franek</b>
Captains	<b>All</b> CICL Captains	(each Captain named elsewhere)
Chairman East	<b>East Division Chairman</b>	<b>Adam Muhs</b>
Chairman North	<b>North Division Chairman</b>	<b>Jim Thomson</b>
ChairmanWest	<b>West Division Chairman</b>	<b>Irwin Gaines</b>
Chairmen	<b>All</b> CICL Chairmen	(as listed above)
CharlieWard	Retired Ratings Chairman	Charlie Ward
CICL	<b>All</b> CICL members registered*	(everybody in this table)
Citadel	Citadel Group Captain	Adam Muhs, Jason Sensat
DownersGroveCC	Downers Grove CC Captain	Brian Smith
Dragons	Lucent Dragon Captain	Dan Eustace
DRW	DRWCaptain	Eugene Gorodetskiy, Lyle Hayhurst
East	<b>All</b> East Division Members	(all East Division team contacts)
Enterprise	Midway CC Enterprise team captain	William Shehan
Excaliburs	Excalibur Captain	David Lee
Fermilab	Fermilab Captain	Lenny Spiegel
Forks	Walgreen Associate-team Captains	Naseer Ansari, Norm Hughes
Friends	Retired Members still in contact	Joe Brozovich, Ruben Reyes, Charlie Ward
Games	<b>Game Editor</b>	<b>Tom Friske</b>
HedgeHogs	HedgeHog Captains	Tonv Jasaitis (primary), Michael Rauchman, Mack Smith
HewittGambits	Hewitt team captains	Ayman Ghaibeh (primary), Charles Bergmeier
Hornet	Midway CC Hornet team captain	Cris Abney
Internet	<b>Webmaster</b>	<b>Marty Franek</b>
Kings	Motorola Kings Captain	Nik Goncharoff
Knights	Motorola Knights Captain	Jim Thomson
Loyola	Loyola Captains	Ulysses Acevedo (primary), William Adams
North	<b>All</b> North Division Members	(all North Division team contacts)
Northwestern	Northwestern University Captains	Garrett Ullom (primary), Ben Wang
Officers	<b>All</b> CICL Officers	(each Officer highlighted in red, incl. Chairmen)
Pawns	SSCC Pawns Captains	Ray Fabiionas (primary), David O'Dell
President	<b>The Head Cheese</b>	<b>Tony Jasaitis</b>
Publicity	<b>Publicity Chairman</b>	<b>Matt Vail</b>
Ratings	<b>Rating Chairman</b>	<b>Art Olsen</b>
RogueSquadron	AMA Associate-type Captain	Rob Eaman (primary), Fred Furtner
Rooks	Argonne Rooks Captain	Bob Hill (primary), Dave Baurac
RubenReyes	Retired Bulletin Editor, Contributor	Ruben Reyes
SaintCharles	St Charles CC Captain	Jeff Wiewel
Secretary	<b>CICL League Secretary</b>	<b>Jerry Thomas</b>
Skewers	Walgreen Company-team Captain	Steve Levenson, Tom Friske
TornadoSnakes	AMA Company-type Team Captain	Fred Furtner(primary), Jalal Masiti
Treasurer	<b>CICL League Treasurer</b>	<b>Paul Freidel</b>

*continued on next page...*

Email Directory (continued)

## CICL EMAIL ALIAS DIRECTORY (Officers in red)

Alias (@chicagochessleague.org)	Sends to what entity	Actual people mailed
Trophy	<b>Trophy Chairman</b>	<b>Mia Pillarella</b>
Tyros	Lucent Tyro Captain	Chuck Dobrovolny (primary) Dave Hahne, Bob Buchner
UOP	UOP Captain	Art Olsen
web	<b>webmaster</b>	<b>Marty Franek</b>
West	<b>All</b> West Division Members	(all West Division team contacts)
YorktownWildcats	SSCC Yorktown Wildcats captains	Len Weber (primary), Patrice Connelly

## The 2009 CICL Awards Banquet



Almost 50 people turned out for the annual CICL awards banquet held at the Alpine Banquet Haus in Westchester, IL on Friday evening, June 5, 2009. This number was notably higher than in recent years, due in large part to the efforts of league president Tony Jasaitis, who brokered an appearance by International Grandmaster Nikolai Mitkov (FIDE 2525). GM Mitkov analyzed one of his tournament games for us as an example of what to do when there is nothing to do (which was the title of his lecture). Then he took on 18 opponents in a “clocked” simultaneous exhibition, where both he and his opponent on each board used a chess clock set up for a time control of Game/30. Although this may seem rather disadvantageous to the grandmaster, he was still able to win 10 of the 18 games. The eight players who won their games each received as their prize a board game invented by our own Wayne Ellice, KWIKORD.

While the grandmaster simul was taking place, Art Olsen directed a speed chess tournament for roughly a dozen participants.



At left, Jim Thomson and Yuri Fridman, both of the Motorola Knights, were among the eight winners in the simul against GM Mitkov. Yuri is holding his prize, a copy of KWIKORD. (Photos courtesy of banquet chairman, Wayne Ellice).

Prior to the lecture, simul and speed chess tournament, awards were presented after dinner. Trophies and plaques were presented to teams and individuals who had notable accomplishments during the 2008-2009 season. The CICL 2009 champion Downers Grove Chess club received the traveling trophy and individual trophies for each team member. The St. Charles Chess Club and the Hedgehogs were presented with awards for tying for second place in the CICL playoffs, and for placing second in their respective divisions.

Also recognized were the Motorola Knights, the North Division champions, and the Northwestern University Chess Club, the East Division champions. UOP received an award for their second place finish in the North Division.

### The 2009 CICL Awards Banquet (continued)

Third places teams in the larger divisions were also recognized: the South Suburban Chess Club Pawns of the West Division, and Loyola University Chess Club of the East Division.



Numerous individual awards were also presented. There were no new Centurions or Triple Centurions in 2009, but we had three new double centurions. Playing their 200<sup>th</sup> league game during the 2008-2009 season/post-season were Edwin Boldingh (UOP), Tom Friske (Walgreens Skewers) and Norm Hughes (Walgreens Forks). Also recognized were new and outgoing league officers. Gratefully acknowledged with plaques were the services of Tom Friske as bulletin editor and webmaster for many years, and those of Bob Buchner, who served as Far West Division chairman and then West Division chairman after the Near West Division and Far West Division merged in 2005. Also acknowledged was the new incoming West Division chairman, Irwin Gaines.

The James E. Warren Award trophy for the most improved player was presented to Josh Persons of the Walgreens Forks, who raised his rating a total of 163 points over the season. Trophies were also presented to the following MVP's:

East Division MVP: Alex Strunk (Loyola)

West Division MVP: Adrian Zolkos (SSCC Pawns)

North Division MVP: Josh Persons (Walgreens Forks)

Also receiving a trophy was Scott Allsbrook (Tyros), winner of the open section of the CICL Open individual tournament which was held on May 9, 2009 along with the CICL team playoffs. —bulletin editor Marty Franek

**Attention USCF Members!! Here are TWO events for your consideration:**

from the Midway Chess Club (<http://www.midwaychessclub.org>)

**What:** Veterans Day Celebration Chess Tournament

**Where:** 6044 W 63rd St., Chicago, IL 60638

**When:** Nov 14, 2009 8:00 AM - 4:00 PM

**Description:** Come to celebrate the Veterans Day with us!

All Veterans playing FREE!

Tournament Format: 4 rounds, Games in 45 min. USCF rated.

Registration: on-line at [www.midwaychessclub.org](http://www.midwaychessclub.org) and on November 14 at 8:30– 9:30 am

E-mail the names, USCF ID, and contact phone numbers to William Shehan at [William@midwaychessclub.org](mailto:William@midwaychessclub.org)

Rounds: 9:45 – 11:30 – 1:30 – 3:15.

Players who arrive later than 9:30 am will have a buy for the first round.

½ point buys are welcome to all rounds.

Registration fee: \$20. ***This is a fundraising event.*** All procedures from the tournament will be dedicated toward “Chess for Veterans” program.

USCF membership can be purchased at the tournament site.

All junior participants under age 14 should be accompanied by adults.

Food concession will be available on-site.

For more information about the tournament or Chess for Veterans program contact Mikhail Korenman at 785-906-0402 or William Shehan at 312-278-3292

from the Downers Grove Chess Club

**November 21, 2009.** Downers Grove Chess Club Tournament.

4-SS G/61 plus 5 sec delay. Fairview Village, 200 Village Drive, Downers Grove, IL 60516.

Entries: Entry fee is \$5, pay cash (no checks) at the door. Prize: Book prize for 1st place, no cash prize.

First Round: 8:30am Bring clocks, sets provided. Registration: maximum number of players is 48, so *advanced registration is advised*. Send email with your name, phone number, and USCF number to Brian Smith, [brs483@att.net](mailto:brs483@att.net) Or leave info on (630) 983-9316.

Onsite registration: 8:00 to 8:20 am Info: <http://dgcc.home.att.net/>

Free parking, but *park only in a space marked for visitors*. "200 Village Drive" is the "Village Apartments" building. Enter its main entrance, and tell receptionist you are there for the chess tournament.

USCF rated, USCF membership required. Multiple sections possible. Players may take a half-point bye, in any one round. For round 4, the 1/2 point bye must be requested before 8:20am.

Junior players (under sixteen years) rated 900+ are welcome, and must be accompanied by a parent throughout the day. Sorry, but we do not accept junior players rated under 900.

With this issue the Games Editor introduces a new feature !

“The Game of the Month” column will more-closely examine a single game which is very instructive and/or from a key match played during the month

### GAME OF THE MONTH

Kalavagunta, Suman (2081) –  
Wiewel, Jeff (2136) [D94]

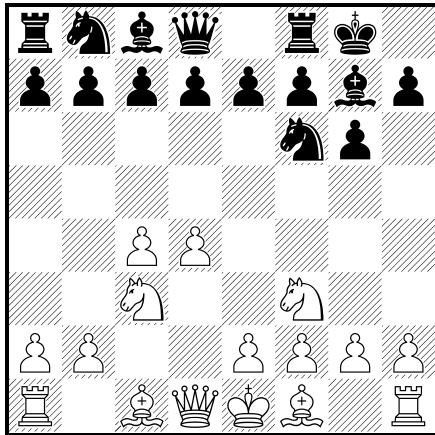
CICL playoff, Round 3, Board 2, 05.09.2009

Slav Schlechter / Gruenfeld Slav [D94]

#### [Notes by Tom Friske]

*This was an exciting game that decided the 2009 CICL Champion ! Black chooses a solid defence that does not yield open lines. An exchange sacrifice promises a draw, but he finds himself needing to convert it to a win! White shows some nice technique all along.*

1.d4 Nf6 2.c4 g6 3.Nc3 Bg7 4.Nf3 0-0



5.e3

White plays super-solidly. He has active alternatives, of course, which transpose to other known systems; such as 5.e4 or 5.Bf4

5...c6

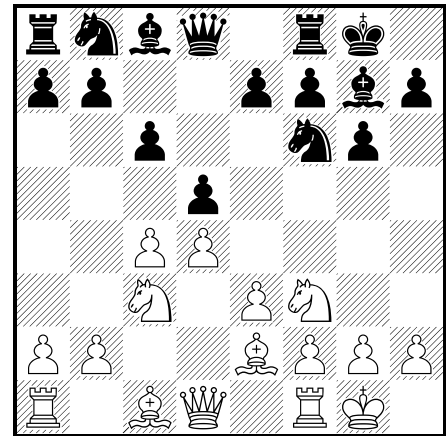
Black chooses a system that can occur from a

QGD Slav or Gruenfeld. Either way, it doesn't score well in Master play.

More dynamic play can be had with 5...d5 followed by c5, trying to exploit the slowness of White's Queen Bishop.

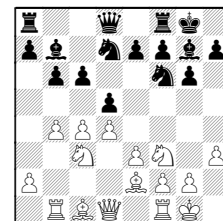
Yet 5...d6 is the most popular, entering King's Indian territory.

6.Be2 d5 7.0-0



7...Ne4 Black has attempted many moves here: Nbd7, Bg4, dxc4, Be6.

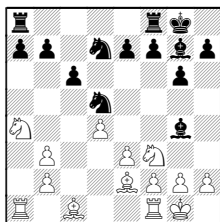
A) 7...Nbd7 8.h3 b6 9.b4 Bb7 10.Rb1



is how GM Jon Speelman directly progressed with White.

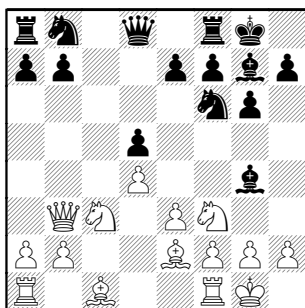
B) 7...Bg4 8.cxd5 (not as good is 8.Qb3 Qb6 9.Na4

*Qxb3 10.axb3 Nbd7 11.cxd5 Nxd5*



was eventually successful for Black in a Master-level game.)

8...cxd5 ( *8...Nxd5 doesn't change much*) 9.Qb3



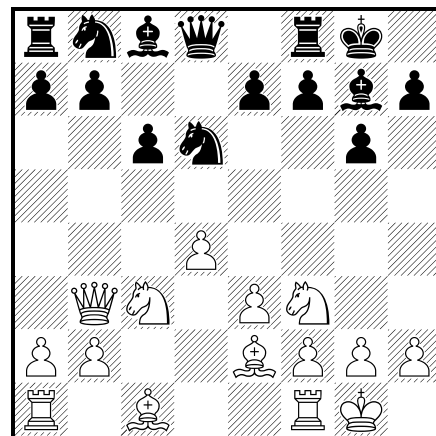
scores practically every time for White in my database.

**C)** Black's results are the best after 7...dxc4 (a move he plays next) 8.Bxc4 Bg4 (or *8...Nbd7*)

**8.Qb3 dxc4 9.Bxc4 Nd6**

Here, 9...Bg4 wouldn't make sense, as there's no pin (as in the database game). 10.Ne5 and Black moves the Bishop again.

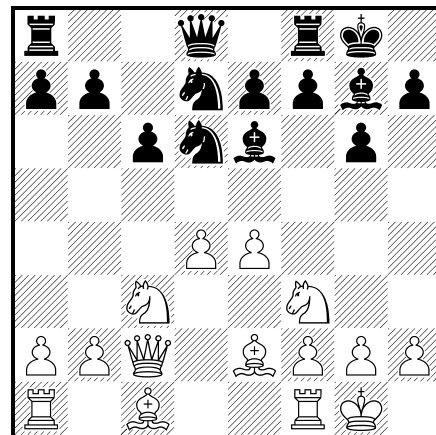
**10.Be2**



**10...Be6 11.Qc2 Nd7**

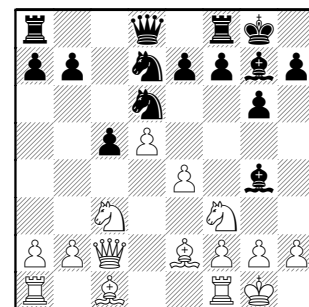
The only Master-level game I find went 11...Bc4 and Black drew.

**12.e4**



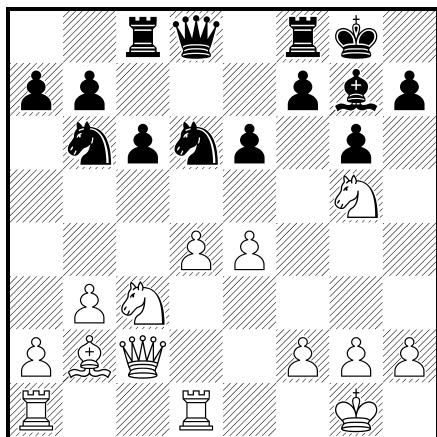
**12...Nb6**

Rybka prefers 12...c5  
13.d5 Bg4 (*diagram*)  
with Gruenfeld  
system themes.

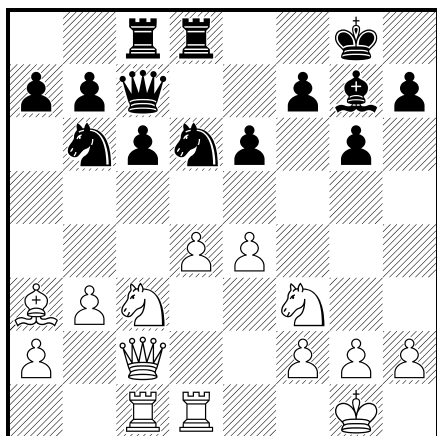


analysis, after 13...Bg4

13.Rd1 Rc8 14.Ng5 Bc4 15.Bxc4 Nbxc4 16.b3 Nb6  
17.Bb2 e6

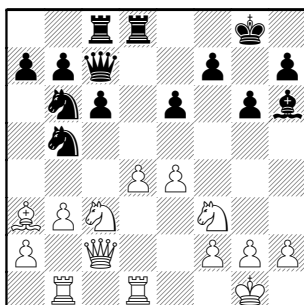


18.Nf3 Qc7 19.Ba3 Rfd8 20.Rac1

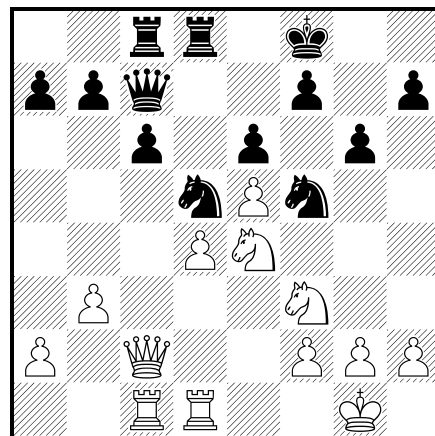


**20...Bf8** This allows White to trade the dark-square defender.

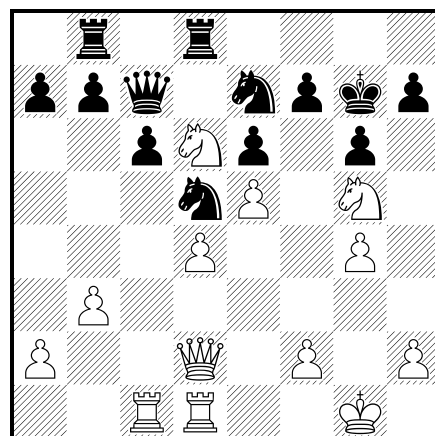
Probably better is  
20...Bh6 21.Rb1 Nb5  
starting counterplay  
(see diagram) 22.Bb2  
(22.Bc1 Bg7) 22...Nxc3  
23.Qxc3 Bg7  
threatening c6-c5



21.e5 Nf5 22.Bxf8 Kxf8 23.Ne4 Nd5



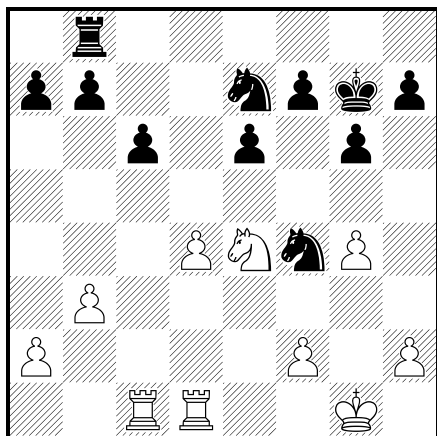
**24.Qd2** White is loading up to play g4, Nf6 and Qh6 (in some order). **24...Kg7 25.g4 Nfe7 26.Nd6 Rb8 27.Ng5**



**27...Rxd6**

A classic exchange sacrifice ! Black's active Knights, super-solid Pawn structure, and extra Pawn are obvious compensation. The question for him, however, is whether he can coordinate on a target and get more than a draw.

**28.exd6 Qxd6 29.Ne4 Qf4 30.Qxf4 Nxf4**



At least at this point, Rybka rates this as slightly better for Black.

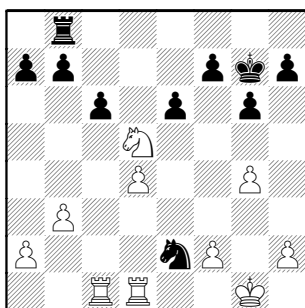
### 31.Nc3

31.Kf1 immediately is better—the Knight is already active. (Black threatens ..Ne2+ forking).

### 31...Rd8

**A)** 31...Rh8 idea h7-h5 is how the computer wants to proceed, with rating now over a half-Pawn.

**B)** At first, I thought Black can get the exchange back with 31...Ned5? 32.Nxd5 Ne2+

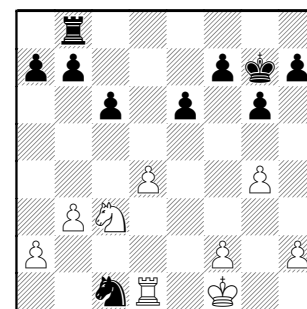


forking, but Rybka showed me how White can win a piece-- don't make the obvious recapture !

It continues 33.Kf1 Nxc1 34.Nc3!

(diagram)  
and the Black  
Knight is trapped.

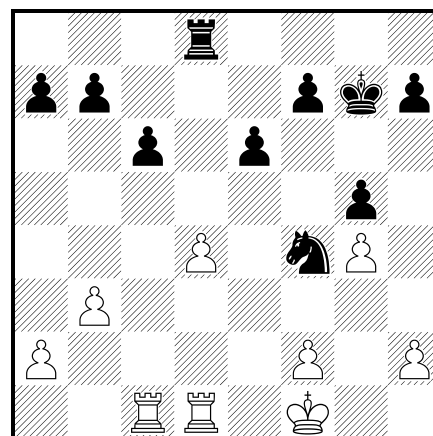
(Putting the Knight  
back on d5, I'd only  
considered  
34.Rxc1? exd5 and  
Black is much  
better)



**32.Kf1 g5** The Pawn becomes a target here-- right into the endgame.

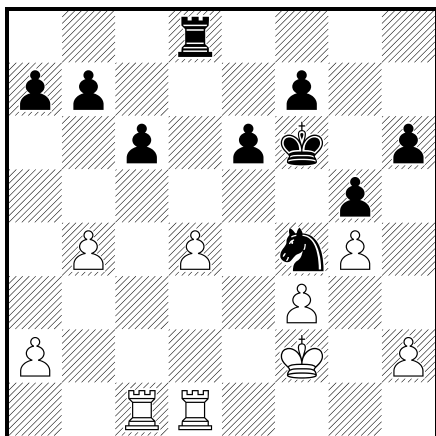
32...h5 is still Rybka's favorite.

**33.Ne2** I would keep the Knight, it is the piece most likely to make threats ! [33.Ne4] **33...Ned5 34.Nxf4 Nxf4**



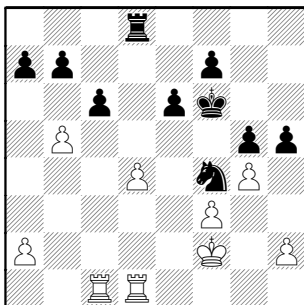
White's only hope here is to start a minority attack; i.e., making Pc6 a target with b4,a4,b5.

**35.f3 h6 36.Kf2 Kf6 37.b4**



**37...a6**

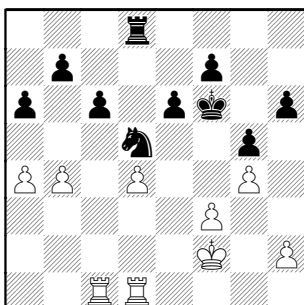
37...h5 idea Rh8 is that Rybka way to counterplay.  
38.b5



38...cxb5 39.gxh5 (39.Rc7 hxg4) 39...b6

**38.a4 Ke7?**

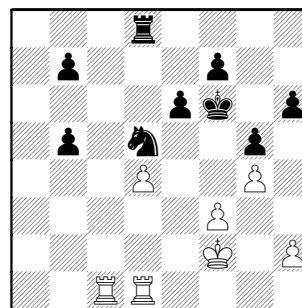
An interesting problem is forced on White after  
38...Nd5!



39.b5

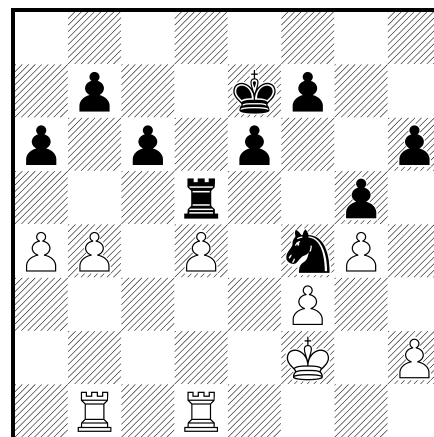
Other methods of protecting the b-Pawn also fail:  
 39.Rc4 Nb6 wins the a-Pawn; or  
 39.Rb1? Nc3 forking

39...axb5 40.axb5 cxb5

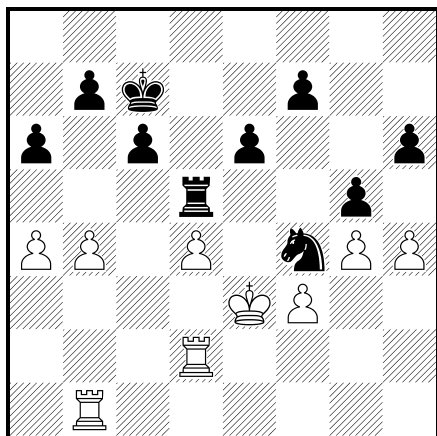


The Knight can hold both Pawns after b6 and b4. Even so, one of the newly-opened files will be an unopposed entry into the defense. However, Black can get rid of the backward h-Pawn (Rybka has been screaming for it, right ?) and I'm not seeing another weakness to attack.

**39.Rb1 Rd5**



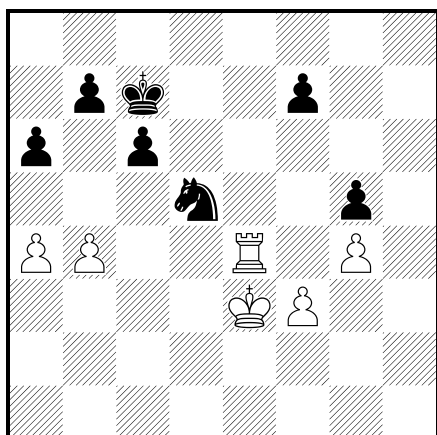
**40.Ke3 Kd6 41.Rd2 Kc7 42.h4**



**42...e5?**

May have been time pressure, but opening lines and removing Pawns helps White break through. Black's material balance is simply not one that promises winning chances. The computer rates this as a full-Pawn swing against Black !

**43.hxg5 hxg5 44.Rbd1 exd4+ 45.Rxd4 Re5+ 46.Re4 Rd5 47.Rxd5 Nxd5+**

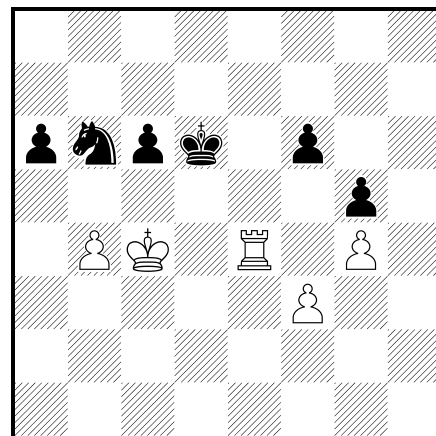


Somewhere around here was when all other games had completed -- with the title match score at 2.5-2.5 . The result of this ending will be the title result !

**48.Kd3**

Black needs a passer. He makes one with 48.. a5!?

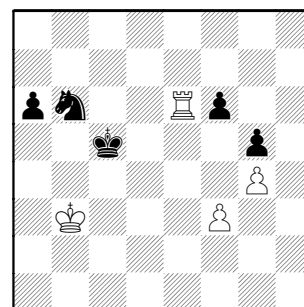
**48...Kd6 49.a5 f6 50.Kc4 b5+ 51.axb6 Nxb6+**



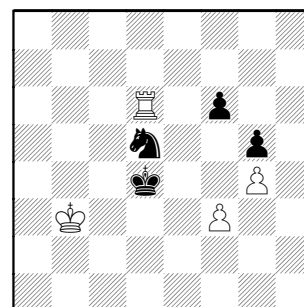
**52.Kb3 Nd5**

I don't see how Black can win this without a forking blunder by White.

52...c5 forces all the Pawns to one side and I'd expect it drawn 53.bxc5+ Kxc5 54.Re6

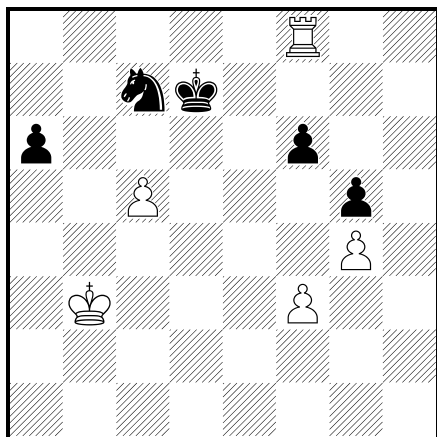


54...Nd5 55.Rxa6 Kd4 56.Re6 Kd3 57.Rd6 Kd4



This is what I was thinking is drawn, but I guess White can swing his King over to g7, then play Ra6, and then f6 will fall.

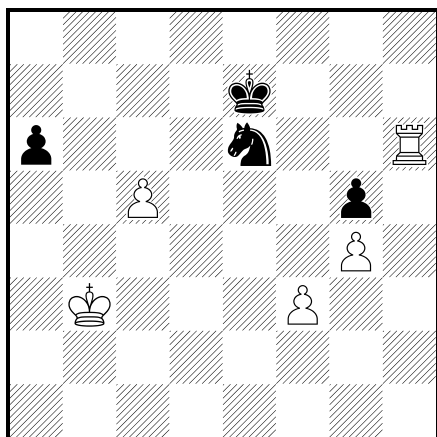
**53.Re8 c5?** Too late ! Game over. **54.Rd8+ Kc6**  
**55.Rc8+ Nc7 56.bxc5 Kd7 57.Rf8**



**57...Ne6**

57...Ke7 but the f-passer looks scary, White can invade with his King via a5. But, still, that a-Pawn is a protected outside passer; Pawn endings would win for Black.

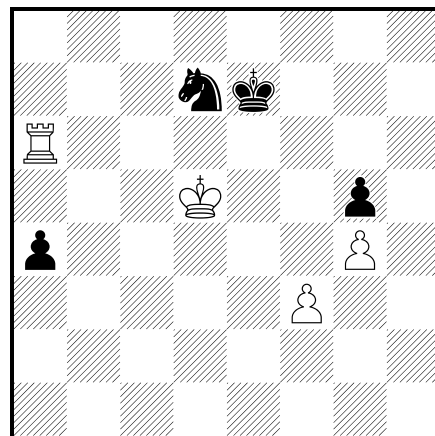
**58.Rxf6 Ke7 59.Rh6** cutting the King from the action, and White can clean up.



**59...Nxc5+ 60.Kc4 Nd7 61.Kd5**

White has about 8 minutes left until sudden death, Black around 40.

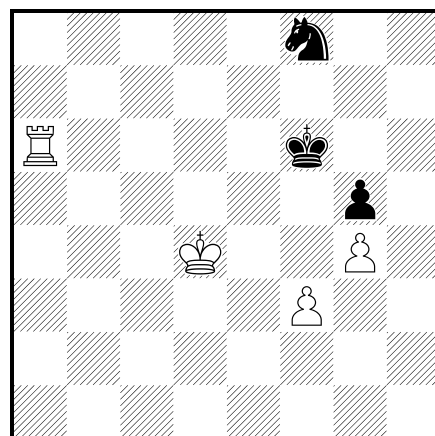
**61...a5 62.Ra6 a4**



**63.Kd4**

63.Rxa4?? Nb6+ is Black's prayer

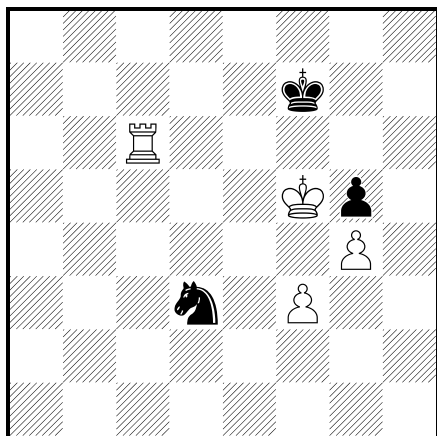
**63...Nf8 64.Rxa4 Kf6 65.Ra6+**



**65...Kf7**

65...Ne6+? **66.Kd5**

**66.Ke4 Ne6 67.Ke5 Nc5 68.Rc6 Nd3+ 69.Kf5**



I enjoyed how White quickly kept his King from Knight checks and still reached his goal. Not a hint of time pressure despite the 35-minute difference.

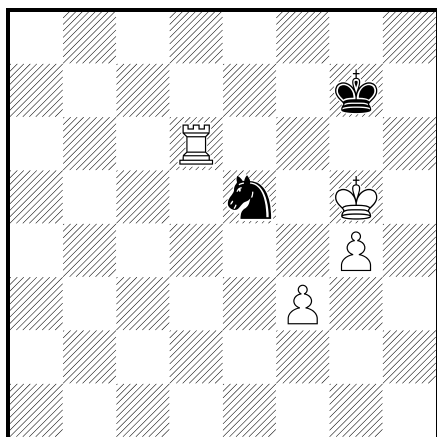
**69...Ne1 70.Rf6+!** cleverly defending the Pawn base.

I was expecting 70.Rc3 Ng2 71.Kxg5 Kg7

(The Knight gets trapped after some form of 71...Ne1 72.Kf4 Ng2+ 73.Kg3 Ne1 74.Kf2)

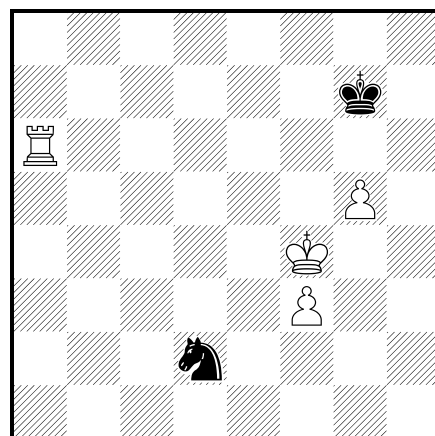
72.Rc7+ and the f-Pawn runs

**70...Kg7 71.Kxg5 Nd3 72.Rd6 Ne5**



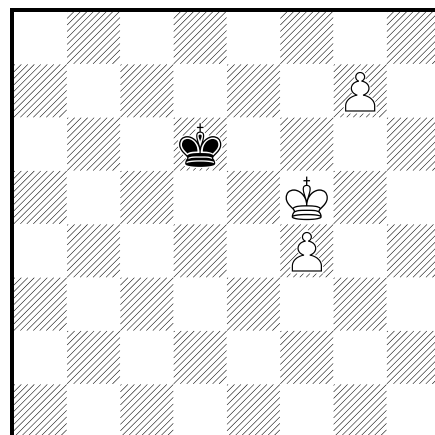
Despite his still moving quickly, White recognized the fork on f7.

**73.Kf4 Nc4 74.Ra6 Nd2 75.g5**



All three scorekeepers stopped recording here. Black's Knight soon reached its King's defense at d6 whereupon it was traded for the Rook and the g-Pawn raced home. It was something like

75...Nc4 76.Kf5 Kf7 77.g6+ Ke7 78.f4 Nd6+ 79.Rxd6 Kxd6 80.g7



**1-0**

**A very instructive game.**

*[Doing final layout, I discovered some turning points that could be explored; especially examine moves 42, 48, and 57. Part of our "Game of the Month" exercise is to more-fully realize our options!]*

## Game 1

Boldingh, Edwin (1891) -  
Dowell, Earnest (1806)

UOP-Excaliburs, 04.09.2009

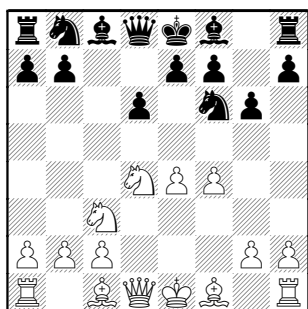
**Sicilian Dragon [B71]**

*Here's a short game that demonstrates some Sicilian themes.*

*I remember watching this Playoff game "live", and walking away wondering why people think they can survive with such a sharp opening. However, actually Black has some defensive themes which could have been calculated over the board.*

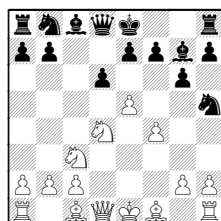
1.e4 c5 2.Nf3 d6 3.d4 cxd4 4.Nxd4 Nf6 5.Nc3 g6 6.f4

The Sicilian player needs to be prepared for early attacks on e5, which White's move announced.



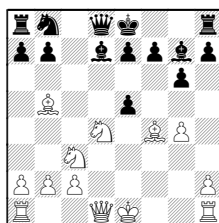
6...Bg7 7.e5 dxe5

Black can apparently survive with a move that seems to trap his Knight: 7...Nh5



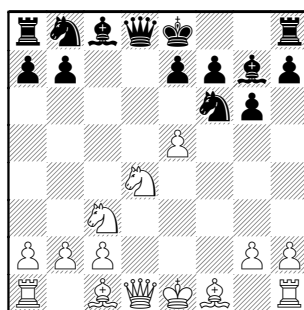
as tactics provide another defence,

8.Bb5+ Bd7 9.g4 Nxf4 10.Bxf4 dxe5



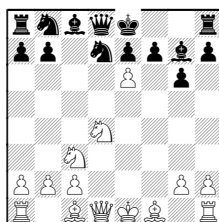
nicely re-gaining the piece

8.fxe5



8...Ng4

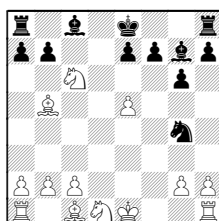
The previously-mentioned 8..Nh5 still works as an alternative, but definitely stay away from 8...Nfd7 due to 9.e6



9...Nf6 (9...fxe6 10.Nxe6 forking) 10.Bc4

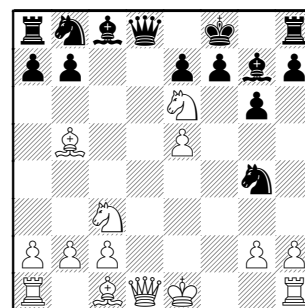
9.Bb5+ Kf8??

Also bad is 9...Bd7 10.Qxg4. Black's only survival is through: 9...Nc6 10.Nxc6 Qxd1+ 11.Nxd1



11...a6 12.Ba4 Bd7

10.Ne6+



1-0

## Game 2

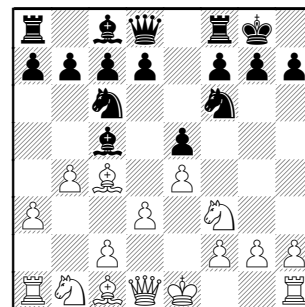
Fabijonas, Ray (1486) -  
Spitzig, Mark (1315)

Pawns vs Pawns, 04.06.2009

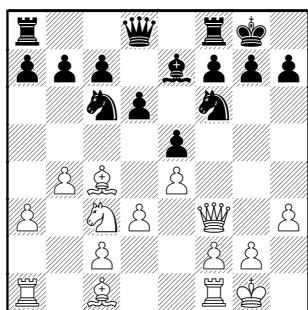
**Italian Game [C50]**

*White found a nice sacrifice against f7 to expose Black's King.*

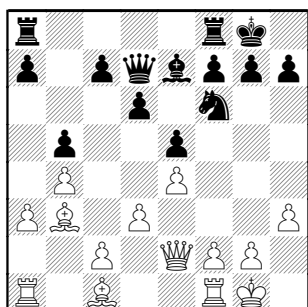
1.e4 e5 2.Nf3 Nc6 3.Bc4 Bc5 4.d3 Nf6 5.a3 0-0 6.b4



6...Be7 7.Nc3 d6 8.0-0 Bg4 9.h3 Bxf3 10.Qxf3

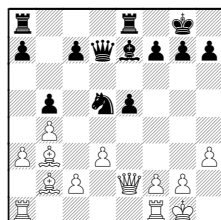


10...Nd4 11.Qd1 Qd7 12.Ne2 Nxe2+  
13.Qxe2 b5 14.Bb3



14...Rfe8 15.Bb2 c6

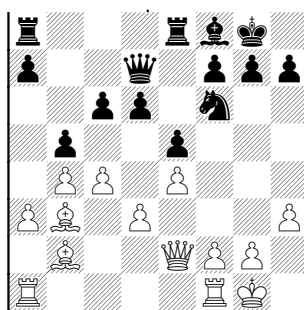
One possibility, breaking open the center to take advantage of the White Queen's placement (faces Re8), doesn't appear to work out: 15...d5 16.exd5 Nxd5



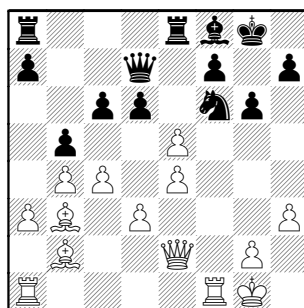
A) 17.Qf3 Nf6 18.Bxe5

B) 17.Bxe5 Bf6 (17...Bd6? 18.Bxd5)  
18.f4 Nc3 19.Qd2 Bxe5 20.fxe5

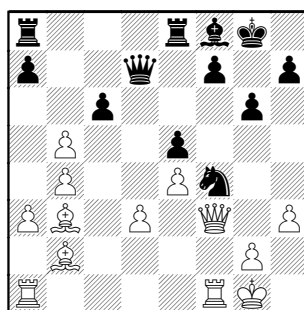
16.c4 Bf8



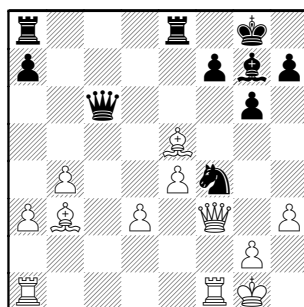
17.f4 g6? 18.fxe5



18...Nh5 [18...dxe5 19.Rxf6] 19.Qf3  
[19.cxb5! idea Bxf7+] 19...dxe5 20.cxb5  
Nf4



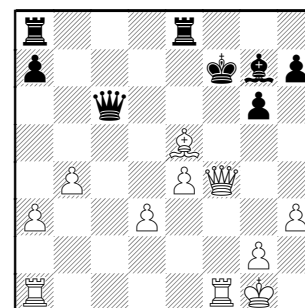
21.bxc6 Qxc6 22.Bxe5 Bg7



23.Bxf7+! Kxf7

Declining the sacrifice doesn't help:  
23...Kh8 24.Bxe8 Rxe8 25.Bxg7+ Kxg7  
26.Qxf4

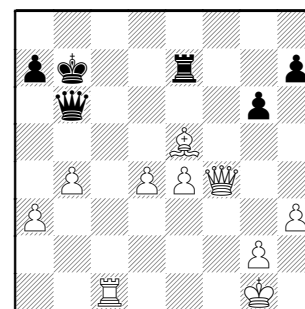
24.Qxf4+



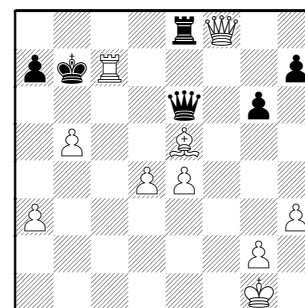
24...Ke6

Of course, running back into the corner yields a quick mate: 24...Kg8 25.Qf7+ Kh8 26.Bxg7# (26.Qxg7#)

25.Bxg7 Kd7 26.Rac1 Qb6+ 27.d4 Re7  
28.Be5 Rc8 29.Rxc8 Kxc8 30.Rc1+ Kb7



31.Qf8 Qe6 32.b5 [32.Qb8+ Ka6 33.Rc5 Rb7]  
32...Re8 33.Rc7+



33...Ka8 [33...Kb6 34.Qc5+ Ka5  
35.Rxa7+] 34.Qc5 Qb6 35.Rc8+ 1-0

## Game 3

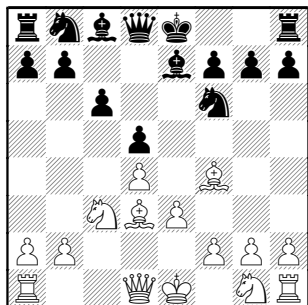
Gaines,Irwin (1705) –  
Hill,Bob (2003)

Fermilab-Rooks, 04.14.2009

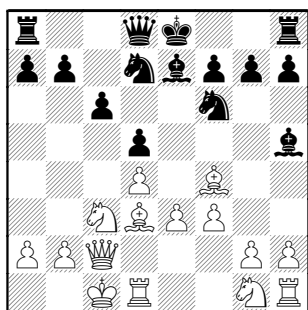
Queen's Gambit Exchange [D35]

*White is a 300-point underdog, but doesn't get intimidated. Black allows a possibility that the dog rips to shreds.*

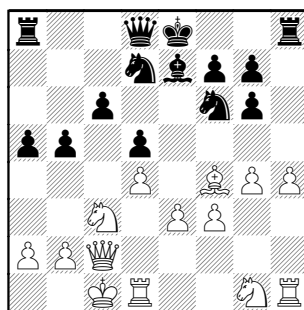
1.d4 d5 2.c4 e6 3.Nc3 Be7 4.cxd5 exd5  
5.Bf4 Nf6 6.e3 c6 7.Bd3



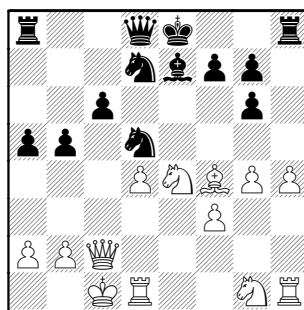
7...Bg4 8.Qc2 Nbd7 9.f3 Bh5 10.0-0-0



10...b5 11.g4 Bg6 12.Bxg6 hxg6 13.h4  
a5

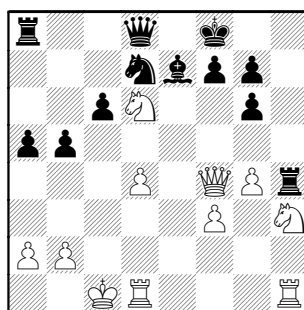


14.e4 dxe4 15.Nxe4 Nd5



16.Nd6+ Kf8 probably the safest place  
for the King, so no worries, yet !

17.Qh2 Rxh4 18.Nh3 Nxf4 19.Qxf4



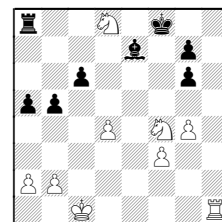
The recapture happens to threaten Qxf7  
mate.

19...Nf6? This appears to be the  
decisive error and White spots it ! Rybka  
suggests Bxd6.

20.Nxf7! very nice, and forceful !  
20...Kxf7

Also not so great is 20...Nd5 since the  
Queen must defend Nf7 21.Nxd8+ Nxf4  
22.Nxf4 Rxh1 (22...Bxd8? 23.Nxg6+  
wins the Rook; 22...Rxd8? 23.Ne6+)

23.Rxh1

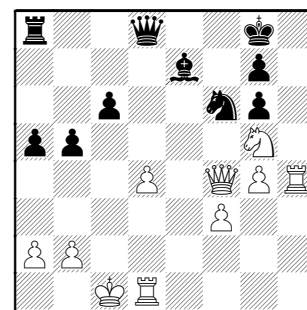


A) 23...Rxd8? 24. Ne6+ forking

B) 23...Bxd8 24.Nxg6+

24.Rh8+ Kf7 (24...Ke7 25.Nxg6+)

21.Ng5+ Kg8 22.Rxh4

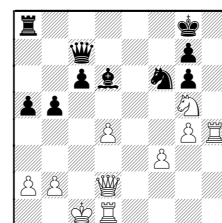


Rdh1 and Rh8# are soon coming.

22...Nd5??

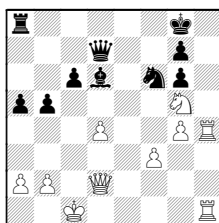
Black can dodge the mate and possible  
fork on e6 with a few moves like:  
22...Bd6 23.Qd2 Qd7

Note that Black needs to carefully place  
his Queen. Something lazy like  
23...Qc7? doesn't dodge the same fork:

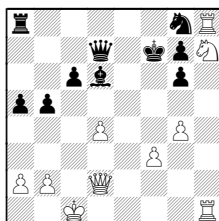


24.Rdh1 Kf8 25.Rh8+ Ng8 26.Ne6+

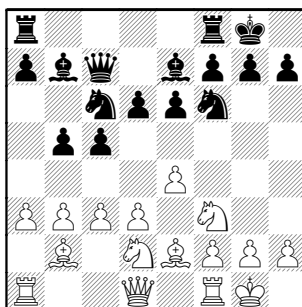
24.Rdh1



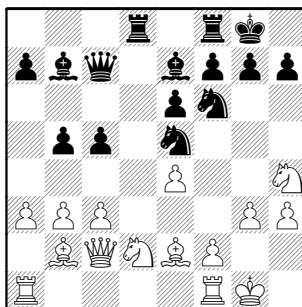
24...Kf8 25.Rh8+ Ng8 26.Nh7+ (makes Rh8 a bit clumsy) 26...Kf7



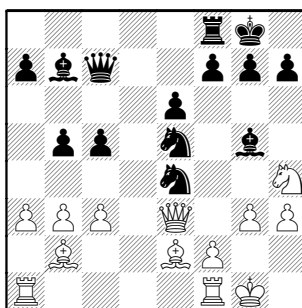
7.a3 0-0 8.Nbd2 b5 9.b3 Bb7 10.Bb2 Qc7



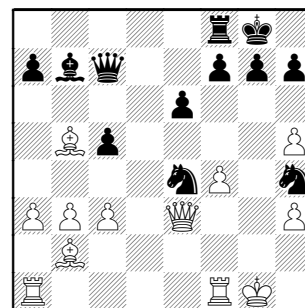
11.g3 Rad8 12.Nh4 d5 13.Qc2 dxe4 14.dxe4 Ne5 15.h3



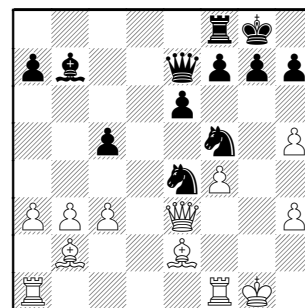
15...Rxd2! 16.Qxd2 Nxe4 17.Qe3 Bg5



18.f4 Bxh4 19.gxh4 Ng6 20.h5 Nh4 21.Bxb5

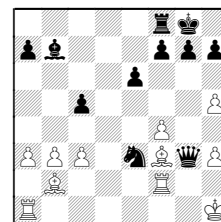


21...Qe7 22.Be2 Nf5 Black is causing "nightmares" for his opponent ! (Also known as "Friske knights" in Walgreen circles, thanks to their Captain's hatred and blindness of them.)



23.Rf2? Nxe3 24.Rh2 Qh4 25.Bf3 Qg3+ 26.Rg2

Mate follows from 26.Kh1 Nf2+ 27.Rxf2



27...Bxf3+ 28.Rxf3 Qg2#

26...Nxe3 27.Bxe3 Nd2

0-1

but Black is still the exchange down.

At any rate Black's whopper allowed:  
23.Qf7#

1-0

#### Game 4

Harper, Monroe (1313) –  
Sensat, Jason (1486)

AMATS-Citadel, 03.23.2009

Sicilian, Unusual [B50]

*White plays lazily and Black uses the time to mass his pieces Kingside. The second player conducts some nice piece play after a nifty exchange sacrifice.*

1.e4 c5 2.d3 Nc6 3.c3 e6 4.Nf3 d6

Since White's third move prevents a Knight arriving on c3, Black should play his standard break immediately!

4..d5 is highly recommended here. Maybe Black was concerned with 5. e5 Qc7 6 d4, transposing to a French-like structure (even if at a tempo loss for White).

5.Be2 Nf6 6.0-0 Be7

## Game 5

Padilla,Rudy (1625) –  
Antipov,Sergey [C44]

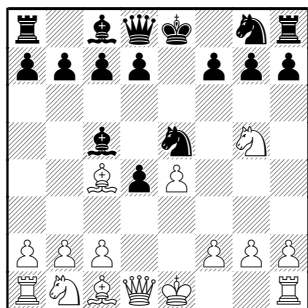
StCCC-Rooks, 03.16.2009

## Italian Gambit [C44]

*Although both players make some early decisions which soon cast the result, some lively tactics make this a fun game to review !*

1.e4 e5 2.Nf3 Nc6 3.Bc4 Bc5 4.d4 exd4 5.Ng5 (Castling is the best way to continue) Ne5

Black should simply continue his development with 5...Nh6. In Master play, he almost always wins. With his game move, however, it is White who always wins the few examples I could find !



## 6.Nxf7 Bb4+

This is more or less forced as White's short-term threat is Qh5+ forking King and the Bishop on c5.

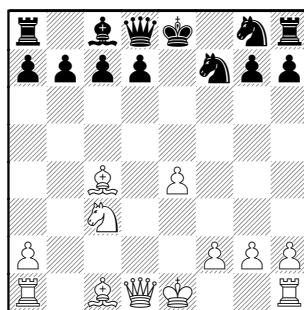
As an example:

6...Nxf7

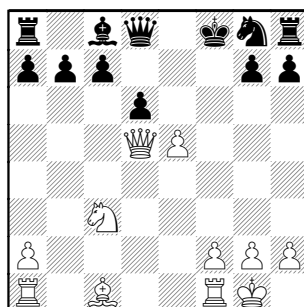
A) 7.Qh5 Bb4+ (7...g6 8.Qxc5) 8.c3 g6 9.Bxf7+ Kxf7 10.Qf3+

B) 7.Qf3 Qf6 (7...Nf6 8.Bxf7+ Kxf7 9.e5)

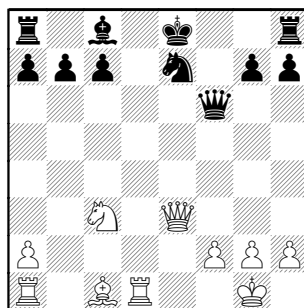
7.c3 dxc3 8.bxc3 Bxc3+ 9.Nxc3 Nxf7



10.Bxf7+ Kxf7 11.Qd5+ Kf8 12.e5 d6 13.0-0



13...Ne7 14.Qf3+ Ke8 15.exd6 Qxd6 16.Rd1 Qf6 17.Qe3 idea Ba3,Nd5



17...Kf7 18.Ba3 Re8 19.Ne4

19.Re1 idea Nd5 19...Be6

19...Qe5 20.Ng5+ Kf6

Some of White's hopes are seen in:  
20...Kg8 21.Qb3+ (Also 21.Qxe5 at any point) 21...Be6

(21...Kf8 22.Qf7#;  
21...Kh8 22.Nf7+ Kg8 23.Nh6+ Kh8  
24.Qg8+ Nxg8 25.Nf7#)

22.Nxe6 Kh8 23.Bb2

21.Nxh7+ Ke6 22.Qb3+ Kf5 23.Qf7+

1-0

## Game 6

Morris,Robert –  
Heiser,Eric [C06]

Knights-RenKnights, 12.06.2005

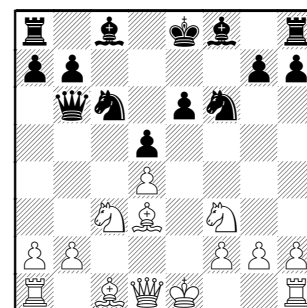
## French Advance / Sicilian c3 [C06]

*Another game where a single, even if seemingly safe, sub-optimal move creates a quick flurry of tactics.*

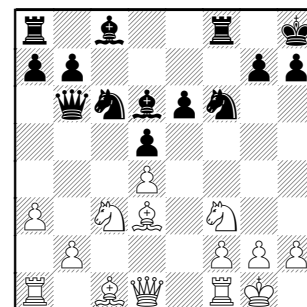
1.e4 c5 2.c3 e6 3.d4 cxd4 4.cxd4 d5 5.e5

This has turned into a French Advance, with White having the improvement of the c3 square available to his Knight.

5...Nc6 6.Nc3 Qb6 7.Nf3 f6 8.exf6 Nxf6 9.Bd3

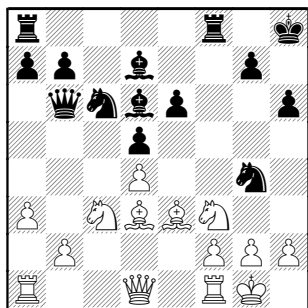


9...Bd6 10.0-0 0-0 11.a3 Kh8



The d4-Pawn suddenly needs protection since the King can no longer be checked by the d3-Bishop.

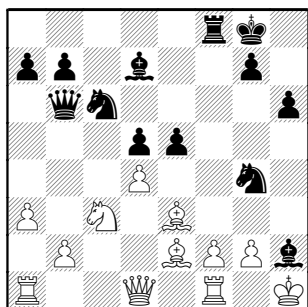
12.Be3 Bd7 13.Ng5 h6 14.Nf3 Ng4



15.Nh4 Bxh2+?

The tactics don't favor this. As White shows, Black needs two consecutive moves to retreat the Bishop without loss.

16.Kh1 e5 17.Ng6+ Kg8 18.Nxf8 Rxf8 19.Be2



19...exd4 [19...Nxe3] 20.Bxg4 Bxg4 21.Qxg4 dxc3 22.Qe6+ Kh8 23.bxc3

Taking the Queen with 23. Bxb6 is fairly convincing, as well.

### BLACK RESIGNED

One continuation would be:  
23...Qc7 24.g3 Bxg3 25.fxg3 Rxf1+  
26.Rxf1 Qxg3 27.Rf8+ Kh7 28.Qf5+

1-0

### Game 7

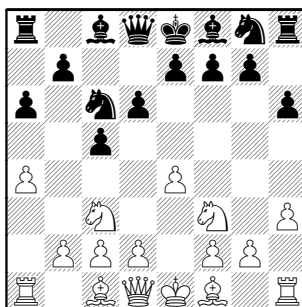
Baumgartner,Chris –  
 Goncharoff,Nik [B28]

RenKnights-Kings, 02.09.2006

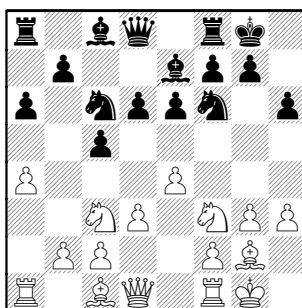
Sicilian Closed [B28]

White gets a much better position, but some sacrificial play we'll examine makes for a more convincing win.

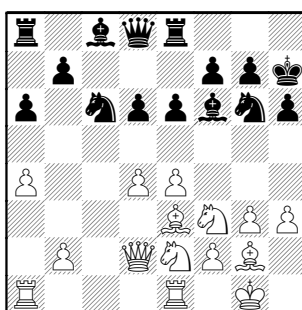
1.e4 c5 2.Nf3 a6 3.a4 Nc6 4.Nc3 d6 5.h3 h6



6.g3 e6 7.Bg2 Be7 8.d3 Nf6 9.0-0 0-0

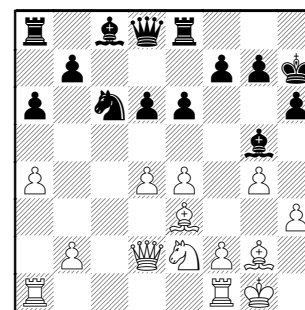


10.Re1 Nd7 11.Ne2 Bf6 12.c3 Re8 13.d4 cxd4 14.cxd4 Nf8 15.Be3 Ng6 16.Qd2 Kh7

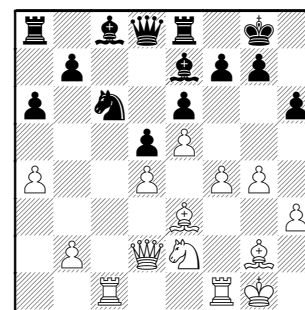


17.g4 Nh4 18.Nxh4 Bxh4 19.Rf1 Bg5?

Up to this point, play has progressed fairly obviously, even if Black has made no real threats. Now, however, the loss of a couple tempi unleashes a fury.



20.f4 Be7 21.Rac1 Kg8 22.e5 d5



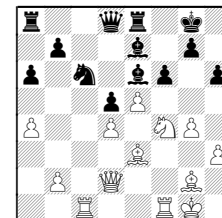
23.f5

When a White Pawn reaches f6, it looks like he'll have a killing attack. So after a slow 23...Na5 24.f6 Nc4 25. Rxc4 should work.

f6 24.exf6

Also interesting is the two lines after 24.fxe6 :

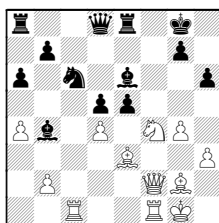
A) Bxe6 25.Nf4



25...Bb4

25...Bf7 26.e6

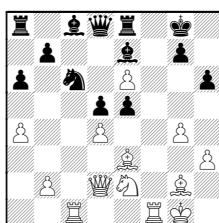
26.Qf2 weakness at f7 26...fxe5?



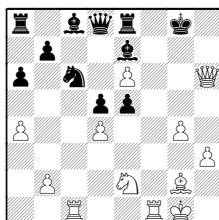
27.Nxe6 Rxe6 28.Qf7+

The other (after 24. fxe6, see previous column) is:

**B) 24...fxe5**



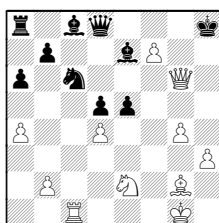
25.Bxh6!? gxh6 26.Qxh6 (idea Rf7)



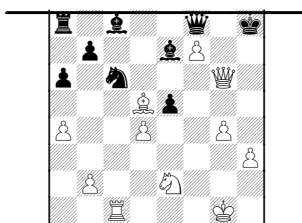
26...Rf8

26...Bg5 27.Qg6+ Kh8 28.Rf7

27.Qg6+ Kh8 28.Rf7 Rxf7 29.exf7  
idea Qh6#



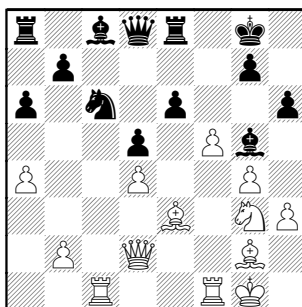
29...Qf8 30.Bxd5 (idea Qg8+)



30...Qg7 (30...Bd7?? 31.Be4 Qg7  
32.Qh5+-) 31.Qh5+ Qh7)

At any rate, back to game at last column  
previous page; where White played  
24. exf6 and then...

**24...Bxf6 25.Ng3 Bg5**

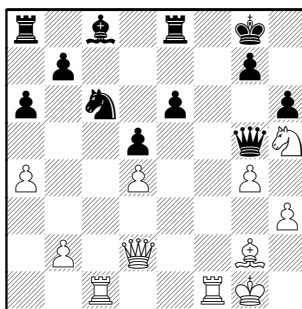


**26.f6!? Bxf6**

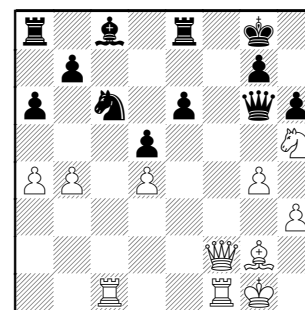
26...Bxe3+ 27.Qxe3 gxf6 28.Qxh6

Or 26...gxf6 27.Bxg5 hxg5 28.Nh5 Rf8

**27.Nh5 Bg5 28.Bxg5 Qxg5**



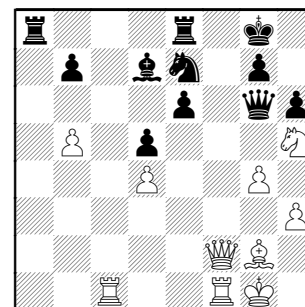
**29.Qf2 Qg6 30.b4!**



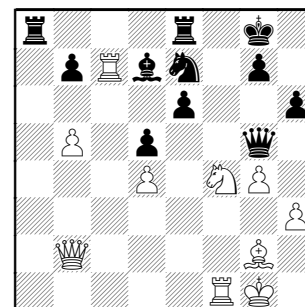
**30...Bd7**

30...Nxb4 31.Rc7 (idea Rxg7+)

**31.b5 axb5 32.axb5 Ne7**

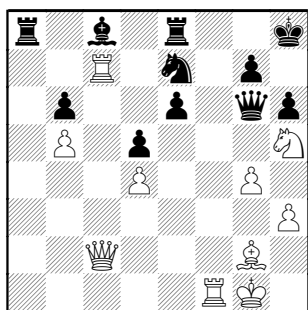


**33.Nf4 Qf6 34.Qb2 Qg5 35.Rc7**



**35...Bc8 36.Nh5 b6 37.Qb3 Kh8 38.Qc2  
Qg6?**

Black steps in it again, but White also  
misses a quick kill !

**39.Nf4?**

The proficient way is:

39.Rxe7! knocking off the Queen's guard, overloading her with ideas Qxg6 and Rxe8+ !

39...Qxc2 40.Rxe8+ Kh7 41.Re7 idea Rxc7+,Rf8#

(White is also OK with 41.Rf7 Qg6 42.Ree7)

41...Qg6

Mates are near:

- A) 41...Kh8 42.Rf8+ Kh7 43.Rxc7#
- B) 41...Kg6 42.Rxc7#
- C) 41...Kg8 42.Rxc7+ Kh8 43.Rf8#

42.Rff7+-

White wins back the queen, winning a piece in the process, and Black's Bishop is trapped after Rc7.

42...Ra5 43.Rxc7+ Qxc7 44.Nxc7! idea Nxe6+,Re8+-xc8 44...Kg6

[I purposely left out the diagrams to help practice envisioning the combinations.]

White's way allows Black to slog on--  
**39...Qf6 40.Qd2**

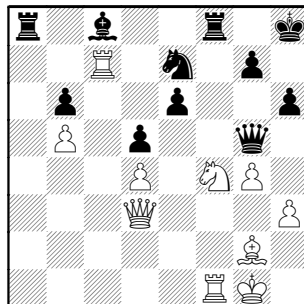
After 40.Rxe7 Rxe7

40...Qxd4+ 41.Kh1 Rxe7 42.Ng6+ loses a piece

41.Ng6+ Kg8 42.Nxe7+ Qxe7 43.Qc6 looks promising after all replies:

- A) 43...Rb8 44.Re1
- B) 43...Bb7 44.Qxb6
- C) 43...Qb7 44.Qe8+ Kh7 45.Rf8

**40...Qg5 41.Qd3 Rf8**

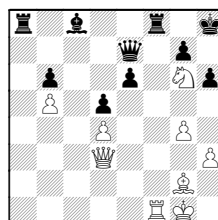
**42.Qg3?**

The previously-examined exchange sac still produces quick mates !

42.Rxe7! Qxe7

(42...Rxf4 43.Re8+- Rf8 44.Rexf8#)

43.Ng6+



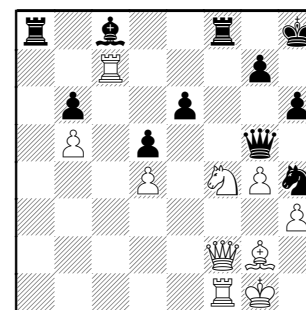
43...Kg8

(43...Kh7 44.Nxe7+ Kh8 45.Rxf8#)

44.Nxe7+ Kh8 45.Rxf8#

**42...Nf5 43.Qf2 Nh4**

The continuing flurry of odd moves strongly hints at time trouble...

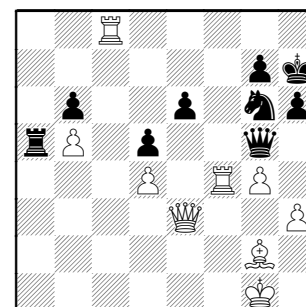
**44.Bh1**

44.Qxh4 Rxf4! (44...Qxh4 45.Ng6+)

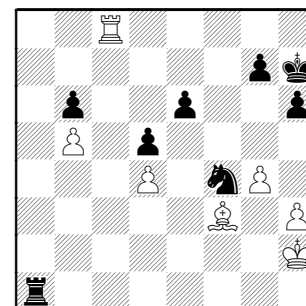
**44...Ng6? 45.Bg2?**

45.Nxc6+ Qxc6 46.Qxf8+

**45...Ra5 46.Qe3** [46.Nxc6+ still]  
**46...Rxf4? 47.Rxc8+ Kh7 48.Rxf4**



**48...Ra1+ 49.Kh2 Qxf4+ 50.Qxf4 Nxf4** idea Ra2 **51.Bf3**



**51...Ra3 52.Bd1 Rd3? 53.Bc2 Kg6**  
**54.Bxd3+ Nxd3**

1-0

## PLAYOFF DIVISION 05-10-2009

TEAM NAME				GAME MATCH		PCT
	W	L	D	POINTS	POINTS	
DOWNERS GR CHESS CLUB	3	0	0	11.0	3.0	1.000
ST CHARLES CHESS CLUB	2	1	0	12.5	2.0	0.667
HEDGEHOGS	2	1	0	10.5	2.0	0.667
PAWNS	1	1	1	10.5	1.5	0.500
NORTHWESTERN CHESS CLUB	1	2	0	8.0	1.0	0.333
UOP	0	1	2	8.0	1.0	0.333
MOTOROLA KNIGHTS	0	1	2	6.5	1.0	0.333
WALGREEN SKEWERS	0	2	1	5.0	0.5	0.167

28-APR-09 PAWNS 2.5 HEDGEHOGS 3.5  
ROUND 1

BD	RATINGS	SCORE		RATINGS	SCORE
1 KRAS, T	2166-14	0	FRANKLIN, D	2195 21	1
2 LATIMER, E	1972 3	.5	RAUCHMAN, M	2032 -4	.5
3 WEBER, L	2048 16	1	SMITH, M	1941-16	0
4 FREITAG, T	1833 29	1	JASAITIS, A	1942-20	0
5 ZOLKOS, A	1709-12	0	SEET, P	1881 12	1
6 FABIJONAS, R	1485-12	0	HEINER, J	1403 28	1
7 FRANEK, M	1740 4	1	HEINER, J	1431 -7	0

29-APR-09 DOWNERS GR CHESS CLUB 4 UOP 2  
ROUND 1

BD	RATINGS	SCORE		RATINGS	SCORE
1 KLUG, S	2189 6	1	CHEBOTAREV, A	1853 -6	0
2 KALAVAGUNTA, S	2073-34	0	VAN MEER, J	1883 34	1
3 TAN, GADDIEL	0 0	0	SIWEK, M	1939 0	1
4 POTTS, K	1811 29	1	LEONG, G	1914-19	0
5 PARMET, D	1769 31	1	BOLDINGH, E	1902-20	0
6 YALAVARTHI, R	1686 31	1	EASTON, R	1831-21	0

29-APR-09 NORTHWESTERN CHESS CLUB 5.5 MOTOROLA KNIGHTS .5  
ROUND 1

BD	RATINGS	SCORE		RATINGS	SCORE
1 SMALLWOOD, J	2074 31	1	FRIDMAN, Y	2211-21	0
2 BAKSHI, A	1954 15	.5	MORRIS, R	2223-10	.5
3 SOLOMON, A	1905 29	1	THOMSON, J	2000-19	0
4 ULLOM, G	1760 24	1	AUGSBURGER, L	1790-16	0
5 WANG, B	1766 27	1	BALICKI, J	1829-18	0
6 GAFNI, P	1601 30	1	CHERKASSKY, G	1722-30	0

07-MAY-09 ST CHARLES CHESS CLUB 5 WALGREEN SKEWERS 1  
ROUND 1

BD	RATINGS	SCORE		RATINGS	SCORE
1 WIEWEL, J	2142 16	1	LEVENSON, S	2044-16	0
2 SPLINTER, J	2081 15	1	GRANATA, M	1960-15	0
3 FREIDEL, P	1966 3	.5	FRISKE, T	1998 -1	.5
4 FREIDEL, JESSE	2011 19	1	VAUGHN, R	1963-19	0
5 SUITS, J	1762 25	1	MCGUIRE, A	1805-25	0
6 POWERS, E	1431 18	.5	BIALON, D	1801-18	.5

09-MAY-09	MOTOROLA KNIGHTS	3	PAWNS	3
ROUND 2				
BD	RATINGS	SCORE	RATINGS	SCORE
1 FRIDMAN, Y	2190 13	1	KRAS, T	2152-13 0
2 MORRIS, R	2213 -6	.5	WEBER, L	2064 10 .5
3 THOMSON, J	1981 10	1	FREITAG, T	1862-15 0
4 BALICKI, J	1811 -2	.5	ELLICE, W	1759 2 .5
5 CHERKASSKY, G	1692-19	0	FRANEK, M	1744 13 1
6 KARANDIKAR, S	1665-20	0	ZOLKOS, A	1697 20 1

09-MAY-09	ST CHARLES CHESS CLUB	5	NORTHWESTERN CHESS CLUB	1
ROUND 2				
BD	RATINGS	SCORE	RATINGS	SCORE
1 MARSHALL, J	2285 6	1	BAKSHI, A	1969 -6 0
2 SPLINTER, J	2096 13	1	SOLOMON, A	1934-13 0
3 FREIDEL, P	1969-33	0	WANG, B	1793 33 1
4 SUITS, J	1787 22	1	ULLOM, G	1784-22 0
5 VON HATTEN, J	1737 6	1	SLIVKA, MAX	1402 -6 0
6 ALBERTS, W	1548 0	1	LUC, DA	0 0 0

09-MAY-09	UOP	3	WALGREEN SKEWERS	3
ROUND 2				
BD	RATINGS	SCORE	RATINGS	SCORE
1 SIWEK, M	1939-15	0	GRANATA, M	1945 22 1
2 CHEBOTAREV, A	1847-12	0	LEVENSON, S	2028 12 1
3 LEONG, G	1895 4	.5	FRISKE, T	1997 -4 .5
4 BOLDINGH, E	1882 18	1	VAUGHN, R	1944-26 0
5 EASTON, R	1810 -1	.5	BIALON, D	1783 2 .5
6 LECHNICK, J	1786 2	1	NICK, X	1294 -3 0

09-MAY-09	HEDGEHOGS	2.5	DOWNERS GR CHESS CLUB	3.5
ROUND 2				
BD	RATINGS	SCORE	RATINGS	SCORE
1 FRANKLIN, D	2216 -2	.5	KLUG, S	2195 2 .5
2 RAUCHMAN, M	2028-22	0	KALAVAGUNTA, S	2039 22 1
3 SMITH, M	1925 16	1	WAKERLY, R	1826-16 0
4 SEET, P	1893-26	0	POTTS, K	1840 26 1
5 JASAITIS, A	1922 8	1	DUGOVIC, D	1760-13 0
6 HEINER, J	1424 -7	0	YALAVARTHI, R	1717 7 1

09-MAY-09	UOP	3	MOTOROLA KNIGHTS	3
ROUND 3				
BD	RATINGS	SCORE	RATINGS	SCORE
1 CHEBOTAREV, A	1835 -5	0	FRIDMAN, Y	2203 3 1
2 BOLDINGH, E	1900 -4	0	MORRIS, R	2207 4 1
3 LEONG, G	1899 19	1	THOMSON, J	1991-19 0
4 EASTON, R	1809 15	1	BALICKI, J	1809-15 0
5 LECHNICK, J	1788-21	0	KARANDIKAR, S	1645 31 1
6 MICKLICH, F	1477 23	1	CHERKASSKY, G	1673-34 0

09-MAY-09	WALGREEN SKEWERS	1	PAWNS	5
ROUND 3				
	BD	RATINGS	SCORE	RATINGS SCORE
1	FRISKE, T	1993 -9	0	KRAS, T 2139 9 1
2	LEVENSON, S	2040-20	0	WEBER, L 2074 20 1
3	GRANATA, M	1967-30	0	FREITAG, T 1847 30 1
4	VAUGHN, R	1918-10	.5	ELLICE, W 1761 6 .5
5	BIALON, D	1785 -2	.5	FRANEK, M 1757 1 .5
6	NICK, X	1291 -4	0	ZOLKOS, A 1717 4 1

09-MAY-09	NORTHWESTERN CHESS CLUB	1.5	HEDGEHOGS	4.5
ROUND 3				
	BD	RATINGS	SCORE	RATINGS SCORE
1	BAKSHI, A	1963 14	.5	FRANKLIN, D 2214-14 .5
2	SOLOMON, A	1921 24	1	SMITH, M 1941-24 0
3	WANG, B	1826-12	0	RAUCHMAN, M 2006 12 1
4	ULLOM, G	1762-16	0	SEET, P 1867 16 1
5	SLIVKA, MAX	1396 -2	0	JASAITIS, A 1930 1 1
6	LUC, DA	0 0	0	HEINER, J 1417 0 1

09-MAY-09	DOWNERS GR CHESS CLUB	3.5	ST CHARLES CHESS CLUB	2.5
ROUND 3				
	BD	RATINGS	SCORE	RATINGS SCORE
1	KLUG, S	2197-18	0	MARSHALL, J 2291 18 1
2	KALAVAGUNTA, S	2061 29	1	WIEWEL, J 2158-29 0
3	POTTS, K	1866-18	0	FREIDEL, P 1936 18 1
4	TAN, GADDIEL	1773 3	.5	SUITS, J 1809 -3 .5
5	DUGOVIC, D	1747 15	1	PADILLA, R 1625-15 0
6	YALAVARTHI, R	1724 12	1	ALBERTS, W 1548-12 0

09-MAY-09 INDIVIDUAL TOURNAMENT SECTION 1									
ROUND 1									
	BD			RATINGS	SCORE			RATINGS	SCORE
(STCCC)	1 ACOSTA,M	2227	3	1	ENGELLEN,M	1768	-3	0	(EXCLB)
(DGCC )	2 STEIN,P	2150	3	1	DOBROVOLNY,C	1734	-3	0	(TYROS)
(STCCC)	3 WIEWEL,J	2129	6	1	DOWELL,E	1789	-6	0	(EXCLB)
(TYROS)	4 ALLSBROOK,F	2120	3	1	STAPLES,C	1663	-3	0	(FERMI)
(FERMI)	5 SERGATSKOV,D	2017-40		0	DJORDJEVIC,V	1642	40	1	(STCCC)
(AMARS)	6 EAMAN,R	1782	12	1	PADILLA,R	1610-12		0	(STCCC)
(DGCC )	7 TAN,GADDIEL	1776	5	1	BIAN,M	1405	-5	0	(FORKS)

09-MAY-09 INDIVIDUAL TOURNAMENT SECTION 1									
ROUND 2									
	BD			RATINGS	SCORE			RATINGS	SCORE
(STCCC)	1	ACOSTA, M		2230-29	0	ALLSBROOK, F		2123 29	1 (TYROS)
(DGCC )	2	STEIN, P		2153 3	1	TAN, GADDIEL		1781 -5	0 (DGCC )
(STCCC)	3	WIEWEL, J		2135 6	1	EAMAN, R		1794 -6	0 (AMARS)
(STCCC)	4	DJORDJEVIC, V		1682-16	0	DOWELL, E		1783 16	1 (EXCLB)
(TYROS)	5	DOBROVOLNY, C		1731-14	0	ENGELLEN, M		1765 20	1 (EXCLB)
(FERMI)	6	SERGATSKOV, D		1977-18	.5	PADILLA, R		1598 18	.5 (STCCC)
(FORKS)	7	BIAN, M		1400 -8	0	STAPLES, C		1660 8	1 (FERMI)

## 09-MAY-09 INDIVIDUAL TOURNAMENT SECTION 1

## ROUND 3

	BD		RATINGS	SCORE		RATINGS	SCORE
(TYROS)	1	ALLSBROOK, F	2152	23	1	STEIN, P	2156-15 0 (DGCC )
(EXCLB)	2	DOWELL, E	1799	-4	0	ACOSTA, M	2201 4 1 (STCCC)
(AMARS)	3	EAMAN, R	1788-30	0		DJORDJEVIC, V	1666 30 1 (STCCC)
(FERMI)	4	STAPLES, C	1668-15	0		ENGELN, M	1785 15 1 (EXCLB)
(TYROS)	5	DOBROVOLNY, C	1717	-6	0	SERGATSKOV, D	1959 9 1 (FERMI)
* Board 6 Adjourned *							
(TYROS)	6	VAIL, M	1588			BIAN, M	1392 (FORKS)

## 09-MAY-09 INDIVIDUAL TOURNAMENT SECTION 2

## ROUND 1

	BD		RATINGS	SCORE		RATINGS	SCORE
(STCCC)	1	JANSSEN, G	1514	10	1	SPITZIG, M	1301-10 0 (PAWNS)
(PAWNS)	2	FABIJONAS, R	1473	6	1	BREYER, A	1320-13 0 (DRGNS)
(STCCC)	3	POWERS, E	1449-32	0		CHAVEZ, A	1299 32 1 (HEDGE)
(UOP )	4	CAMPBELL, DOUG	1425	0	1	BOURIS, B	0 0 0 (STCCC)
(PAWNS)	5	CHRISTIAN, T	1436	0	1	MIEDONMA, T	0 0 0 (STCCC)
(STCCC)	6	BALES, R	1414	0	1	BOGDANOVIC, Z	0 0 0 (STCCC)

## 09-MAY-09 INDIVIDUAL TOURNAMENT SECTION 2

## ROUND 2

	BD		RATINGS	SCORE		RATINGS	SCORE
(PAWNS)	1	FABIJONAS, R	1479	8	1	BALES, R	1414-18 0 (STCCC)
(UOP )	2	CAMPBELL, DOUG	1425-22	0		CHRISTIAN, T	1436 22 1 (PAWNS)
(STCCC)	3	POWERS, E	1417	0	1	BOGDANOVIC, Z	0 0 0 (STCCC)
(DRGNS)	4	BREYER, A	1307	0	1	MIEDONMA, T	0 0 0 (STCCC)
(PAWNS)	5	SPITZIG, M	1291	3	.5	CHAVEZ, A	1331 -3 .5 (HEDGE)

## 09-MAY-09 INDIVIDUAL TOURNAMENT SECTION 2

## ROUND 3

	BD		RATINGS	SCORE		RATINGS	SCORE
(PAWNS)	1	CHRISTIAN, T	1458	24	1	FABIJONAS, R	1487-11 0 (PAWNS)
(HEDGE)	2	CHAVEZ, A	1328	6	.5	POWERS, E	1417 -6 .5 (STCCC)
(DRGNS)	3	BREYER, A	1307	7	.5	CAMPBELL, DOUG	1403 -7 .5 (UOP )
(STCCC)	4	BALES, R	1396	-7	.5	SPITZIG, M	1294 7 .5 (PAWNS)
(STCCC)	5	MIEDONMA, T	0	0	0	BOGDANOVIC, Z	0 0 1 (STCCC)

## EAST DIVISION TOP TEN

FRANKLIN, D	HEDGE	2200
STRUNK, ADAM	LOYLA	2134
SMALLWOOD, J	NWEST	2105
PFAU, M	CITGR	2100
STRUNK, ALEX	LOYLA	2044
RAUCHMAN, M	HEDGE	2018
JOHNSON, F	AMATS	1983
BAKSHI, A	NWEST	1977
SOLOMON, A	NWEST	1945*
JASAITIS, A	HEDGE	1931D

## NORTH DIVISION TOP TEN

MORRIS, R	MKNGT	2211C
FRIDMAN, Y	MKNGT	2206C
HART, V	EXCLB	2049
MELNIKOV, I	MKING	2024C
LEVENSON, S	SKEWR	2020
WALLACH, C	MKING	2007C
FRISKE, T	SKEWR	1984C
SANTIAGO, T	FORKS	1973C
THOMSON, J	MKNGT	1972C
SOLLANO, E	FORKS	1941C

## WEST DIVISION TOP TEN

MARSHALL, J	STCCC	2309
ACOSTA, M	STCCC	2205
KLUG, S	DGCC	2179
ALLSBROOK, F	TYROS	2175
WILLIAMS, K	PAWNS	2157
KRAS, T	PAWNS	2148C
WIEWEL, J	STCCC	2141
STEIN, P	DGCC	2141C
BENEDEK, R	ROOKS	2126T
SPLINTER, J	STCCC	2109

## MOST IMPROVED PLAYERS

PERSONS, J	FORKS	163
FREITAG, T	PAWNS	130
ENGELN, M	EXCLB	130
ZOLKOS, A	PAWNS	128
SOLOMON, A	NWEST	98
STRUNK, ALEX	LOYLA	96
VON HATTEN, J	STCCC	93
MEYER-ABBOTT, B	AMATS	91
WIEWEL, J	STCCC	85
ALLEN, H	AMARS	76

## Corrected Rating List

30

NAME	TEAM	W	L	D	RATING	NAME	TEAM	W	L	D	RATING
ABNEY, I	STXAV	0	6	1	1127#	DENEEN, D	BPMLX	0	1	0	1435
ACEVEDO, U	LOYLA	3	8	1	1491*	DENMARK, T	TYROS	0	1	1	1658
ACOSTA, M	STCCC	2	1	0	2205	DIAZ, P	TYROS	4	2	2	2059D
ADAMS, W	LOYLA	2	6	3	1517*	DJORDJEVIC, V	STCCC	4	1	2	1696
AHK TAR, A	LOYLA	0	1	0	1200/2	DOBROVOLNY, C	TYROS	5	8	1	1711D
AITIPAMULA, J	MKING	7	0	2	2105#	DOWELL, E	EXCLB	2	8	2	1795
ALBERTS, W	STCCC	4	3	1	1536	DRENDEL, B	FERMI	1	4	0	993*
ALEXANDER, A	LOYLA	0	1	0	0000/0	DUFFY, J	AMARS	3	7	1	1613
ALEXANDER, J	LOYLA	6	0	5	1669#	DUGOVIC, D	DGCC	5	1	2	1762
ALFONSO, E	MKNGT	1	1	1	1456	DUONG, R	MKNGT	0	1	1	1505*
ALLEN, H	AMARS	4	5	2	1856C	EAMAN, R	AMARS	5	9	0	1758
ALLSBROOK, F	TYROS	6	3	5	2175	EASTON, R	UOP	6	4	2	1824C
ANGSTADT, B	FERMI	0	1	0	0000/1	EGERTON, J	DGCC	4	0	2	2031
ANNIS, J	FERMI	0	3	0	1426*	ELLICE, W	PAWNS	3	6	4	1767C
ANSARI, N	FORKS	3	5	1	1589	ENGELN, M	EXCLB	6	3	0	1800
ANTIPOV, S	ROOKS	4	3	0	0000/4	EUSTACE, D	DRGNS	3	7	1	1513D
ANTIPOVA, A	ROOKS	2	3	1	2100	FABIJONAS, R	PAWNS	8	6	1	1476T
AUGSBURGER, L	MKNGT	0	2	0	1774C	FARMER, B	AMATS	0	2	0	0000/4
BABINEC, J	MKNGT	2	3	1	1339*	FRANEK, M	PAWNS	9	1	4	1758D
BAKSHI, A	NWEST	1	4	3	1977	FRANK, M	AMARS	3	3	3	1729C
BALES, R	STCCC	3	1	2	1389	FRANKLIN, D	HEDGE	2	0	3	2200
BALICKI, J	MKNGT	3	6	4	1794C	FREIDEL, JESSE	STCCC	3	1	0	2030
BARRETT, M	STXAV	0	4	0	0000/3	FREIDEL, P	STCCC	3	3	1	1954
BART, T	NWEST	0	1	0	0000/1	FREITAG, T	PAWNS	7	2	0	1877
BAURAC, D	ROOKS	4	6	0	1750T	FRIDMAN, Y	MKNGT	7	1	3	2206C
BENEDEK, R	ROOKS	5	1	5	2126T	FRISKE, T	SKEWR	6	3	3	1984C
BERNSTEIN, J	ROOKS	0	1	0	0000/3	FULKERSON, R	AMARS	6	2	1	1476
BIALON, D	SKEWR	6	3	4	1783	FURTNER, F	AMATS	0	10	3	1445
BIAN, M	FORKS	2	5	1	1392#	GAFNI, P	NWEST	6	0	2	1631
BOGDANOVIC, Z	STCCC	1	2	0	0000/2	GAINES, I	FERMI	4	5	2	1728T
BOLDING, E	UOP	5	5	2	1896C	GILVORY, B	STXAV	1	0	0	0000/1
BOURIS, B	STCCC	0	2	0	0000/2	GOLISZEK, M	DGCC	0	3	0	1520
BRAZEL, J	STXAV	0	1	0	0000/1	GONCHAROFF, N	MKING	2	5	1	1541V
BREYER, A	DRGNS	6	3	1	1314	GORODETSKIY, E	DRW	8	3	1	1914
BRONFELD, A	EXCLB	1	2	0	1783	GORODETSKIY, S	DRW	2	7	1	1886
BROTOS, J	EXCLB	0	6	0	1497T	GRANATA, M	SKEWR	5	5	0	1937
BUCHNER, R	TYROS	2	1	1	1656C	GREENWALD, J	DRW	1	0	0	1200/0
BYRNE, M	TYROS	5	5	0	1352	GREER, J	STCCC	3	1	0	1390
CAMPBELL, DOUG	UOP	6	4	1	1396*	GRUDZINSKI, J	ROOKS	0	1	0	1442
CEASE, H	FERMI	0	1	0	1473	GRUDZINSKI, T	AMARS	0	4	0	1300/1
CHAVEZ, A	HEDGE	6	3	4	1334*	GRYPARIS, J	MKING	0	2	0	1378C
CHEBOTAREV, A	UOP	4	4	1	1830#	GUGENHEIM, O	DRW	3	3	5	1605
CHERKASSKY, G	MKNGT	7	4	1	1639	GUIO, J	TYROS	3	2	0	1808C
CHO, V	NWEST	0	1	0	0000/0	HAHNE, D	TYROS	4	4	1	1580C
CHRISTIAN, T	PAWNS	5	1	2	1482#	HAMELINK, N	FORKS	3	5	0	1674
CONDITT, D	STXAV	0	2	0	0000/1	HARPER, M	AMATS	1	12	0	1302*
COULTER, D	BPMLX	2	4	2	1873	HART, V	EXCLB	1	0	0	2049
CYGAN, J	MKING	1	2	0	1792	HAYHURST, W	DRW	5	4	2	1901
DEGRAFF, B	FERMI	4	0	0	1552	HEINER, J	HEDGE	4	2	1	1417
DEICHMANN, E	BPMLX	1	6	1	1256	HENDRICKSON, B	BPMLX	1	0	0	1532

/x - UNRATED; x = # OF RATED GAMES

# - 5 TO 9 RATED GAMES

\* - 10 TO 24 RATED GAMES

C - CENTURY CLUB MEMBER

D - DOUBLE CENTURION

T - TRIPLE CENTURION

Q - QUAD CENTURION

V - QUINTUPLE CENTURION

05-10-2009

NAME	TEAM	W	L	D	RATING	NAME	TEAM	W	L	D	RATING
HERNANDEZ, F	BPMLX	0	1	0	955*	MILLER, O	DRW	0	2	0	1100/1
HERNANDEZ, R	FERMI	1	0	0	0000/0	MORRIS, R	MKNGT	5	0	6	2211C
HILL, R	ROOKS	4	3	1	1991D	MOSSBRIDGE, A	UOP	0	1	0	1635
HINCHCLIFF, E	AMATS	1	1	0	0000/0	MUELLER, R	BPMLX	1	1	0	1057*
HLOHOWSKYJ, I	ROOKS	2	0	1	1068*	MUHS, A	CITGR	2	5	2	1663
HUA, P	DRW	2	2	0	1100/1	NEMLEKAR, A	DRW	2	2	0	1200/2
HUGHES, N	FORKS	1	7	2	1616C	NICK, X	SKEWR	3	5	0	1287*
IRBY, L	AMARS	0	4	0	0000/9	NORRIS, T	STXAV	0	1	0	0000/0
JACKSON, WILLIAM	STXAV	0	9	1	1329#	NOWAK, M	STXAV	0	4	0	0000/4
JANSSEN, G	STCCC	2	3	0	1524	O'DELL, DW	PAWNS	1	0	0	1364D
JASAITIS, A	HEDGE	8	5	1	1931D	OLSEN, A	UOP	1	1	1	1479C
JOHNSON, F	AMATS	4	1	0	1983	ONG, K	CITGR	6	3	1	1803
JOSHI, B	MKING	1	0	0	1576*	PADILLA, R	STCCC	5	6	2	1616
KACZYNSKI, W	FORKS	0	2	0	0000/7	PALMER, J	HEDGE	6	0	1	1582
KALAVAGUNTA, S	DGCC	8	2	2	2090	PARMET, D	DGCC	5	1	1	1800
KANNAPPAN, V	SKEWR	0	2	0	0000/2	PARRA, J	CITGR	1	3	0	1200/5
KARANDIKAR, S	MKNGT	4	5	0	1676	PATELLA, C	AMATS	0	2	0	0000/3
KARPIERZ, J	TYROS	0	1	0	1291	PERERSEN, S	STXAV	0	1	0	0000/1
KINGENBERG, T	BPMLX	0	1	0	0000/1	PERSONS, J	FORKS	8	1	1	1566*
KLUG, S	DGCC	7	3	2	2179	PETERSON, T	AMATS	0	1	1	1523
KOLLI, S	AMATS	1	0	0	0000/1	PFAU, M	CITGR	4	1	4	2100
KOMORAVOLU, K	DRGNS	4	2	0	1430	PILLARELLA, M	STXAV	1	6	0	0000/4
KRAS, T	PAWNS	3	2	1	2148C	PIPARIA, J	MKING	2	3	4	1941C
KRATKA, M	HEDGE	5	1	0	1629	PLOTNER, J	LOYLA	5	5	1	1291#
KUHLMANN, S	ROOKS	0	2	1	1371*	POTTS, K	DGCC	9	2	1	1848
LATIMER, E	PAWNS	1	2	2	1975T	POWERS, E	STCCC	1	1	3	1411
LE, DUC	CITGR	5	6	1	1621	PRIMORAC, V	CITGR	5	2	0	0000/2
LECHNICK, J	UOP	5	1	3	1767C	PROKOPOWICZ, P	CITGR	2	3	0	1158#
LEE, D	EXCLB	4	5	1	1917	RABINOVICH, E	MKING	3	4	0	1517
LEONG, G	UOP	4	6	3	1918D	RAMANATHAN, N	ROOKS	4	4	0	1290*
LEVENSON, S	SKEWR	4	4	4	2020	RAUCHMAN, M	HEDGE	3	2	4	2018
LU, D	CITGR	0	1	0	1387*	RAVI, S	BPMLX	1	0	0	0000/1
LUC, DA	NWEST	2	2	0	0000/2	REDMOND, M	DRW	4	3	1	1569#
LUDWIG, T	DRGNS	2	4	2	1974C	REICH, T	BPMLX	1	6	1	1742
LUKASHEVICH, A	DRW	0	1	0	1100/1	REID, C	EXCLB	3	3	2	1455D
MANILA, M	BPMLX	1	6	0	1072	RINGENBERG, T	BPMLX	0	3	1	1408
MARCOWKA, R	DRGNS	4	6	0	1889T	RODYANSKY, S	NWEST	4	0	0	1734
MARSHALL, J	STCCC	7	0	1	2309	ROMERO	STXAV	0	1	0	0000/1
MASITI, J	AMATS	2	4	0	1328*	RUFUS, B	BPMLX	1	0	3	1374
MCGOWAN, D	BPMLX	4	5	1	1495	RYAN, P	DRW	5	2	0	1350/4
MCGUIRE, A	SKEWR	3	3	0	1780*	SAGALOVSKY, L	HEDGE	0	1	1	1927
MEHDI, SYED	AMATS	1	2	0	0000/1	SANTIAGO, T	FORKS	3	1	5	1973C
MELNIKOV, I	MKING	0	1	4	2024C	SEDOV, A	FERMI	1	1	0	1779*
MEYER, C	AMATS	2	3	2	1242*	SEET, P	HEDGE	4	1	0	1883
MEYER-ABBOTT, B	AMATS	4	8	0	1408*	SEGRETO, T	STCCC	1	0	0	1278
MICHALOPOULOS, G	CITGR	1	3	0	1289	SENSAT, J	CITGR	2	6	1	1512
MICKLICH, F	UOP	2	2	1	1500D	SERGATSKOV, D	FERMI	7	2	2	1968*
MIEDONMA, T	STCCC	0	3	0	0000/2	SHEHAN, W	STXAV	0	7	0	0000/5
MIKOS, D	LOYLA	0	1	0	0000/3	SHEPARDSON, T	HEDGE	2	1	0	1575
MIKULECKY, B	PAWNS	0	1	1	1389D	SIEGEL, R	EXCLB	3	2	1	1485C

/x - UNRATED; x = # OF RATED GAMES

# - 5 TO 9 RATED GAMES

\* - 10 TO 24 RATED GAMES

C - CENTURY CLUB MEMBER

D - DOUBLE CENTURION

T - TRIPLE CENTURION

Q - QUAD CENTURION

V - QUINTUPLE CENTURION

# Corrected Rating List

32

NAME	TEAM	W	L	D	RATING	NAME	TEAM	W	L	D	RATING
SINOPLE, J	STXAV	1	8	0	829	TASCH, J	LOYLA	1	1	0	0000/1
SIWEK, M	UOP	2	3	2	1924D	TEGEL, F	DRGNS	2	2	2	2059Q
SLINKEL, M	NWEST	1	0	0	0000/0	THOMAS, J	DRGNS	4	3	2	1504D
SLIVKA, MAX	NWEST	6	3	0	1394	THOMPSON, D	FERMI	4	2	0	0000/4
SMALLWOOD, J	NWEST	9	1	2	2105	THOMSON, J	MKNGT	6	4	2	1972C
SMITH, BR	DGCC	1	0	1	1612C	ULLOM, G	NWEST	9	2	0	1746
SMITH, M	HEDGE	6	5	2	1917	VAIL, M	TYROS	3	2	2	1588
SOLLANO, E	FORKS	2	6	1	1941C	VAN MEER, J	UOP	3	0	0	1917
SOLOMON, A	NWEST	8	2	2	1945*	VAN SICAKLE, L	STXAV	0	2	0	0000/1
SOLORIO, J	STXAV	0	0	1	0000/1	VAUGHN, R	SKEWR	6	5	1	1908*
SOVA, ANDREW	LOYLA	1	0	2	0000/2	VECANSKI, D	DGCC	4	1	1	1610
SPIEGEL, L	FERMI	4	4	3	1962T	VIGANTS, A	EXCLB	0	6	0	1488C
SPITZIG, M	PAWNS	0	7	3	1301	VON HATTEN, J	STCCC	6	1	1	1743
SPLINTER, J	STCCC	4	0	1	2109	WAKERLY, R	DGCC	5	2	0	1810
STAMM, V	DRGNS	1	7	2	1474T	WALLACH, C	MKING	3	2	4	2007C
STAPLES, C	FERMI	4	2	2	1653	WANG, B	NWEST	7	3	3	1814
STEIN, P	DGCC	2	2	0	2141C	WARD, CH	HEDGE	1	0	0	1337
STOLTZ, B	TYROS	0	3	0	1849D	WEBER, L	PAWNS	5	4	4	2094
STOSKUS, A	STCCC	1	0	0	1509	WIEWEL, J	STCCC	11	3	0	2141
STRUNK, ADAM	LOYLA	7	1	4	2134	WILLIAMS, K	PAWNS	1	0	2	2157
STRUNK, ALEX	LOYLA	10	0	2	2044	YACOUT, A	ROOKS	0	1	0	1588
SUAREZ, E	ROOKS	6	1	2	1872C	YALAVARTHI, R	DGCC	8	1	0	1736
SUERTH, F	EXCLB	0	2	1	1522D	YURCHENKO, O	AMATS	1	4	0	0000/1
SUITS, J	STCCC	5	3	3	1806	ZADEREJ, V	BPMLX	4	3	1	1645
SUVARNAKANTI, R	BPMLX	0	1	0	1260*	ZOLKOS, A	PAWNS	11	2	0	1721
TAN, GADDIEL	DGCC	4	3	2	1776#						

/x - UNRATED; x = # OF RATED GAMES

# - 5 TO 9 RATED GAMES

\* - 10 TO 24 RATED GAMES

C - CENTURY CLUB MEMBER

D - DOUBLE CENTURION

T - TRIPLE CENTURION

Q - QUAD CENTURION

V - QUINTUPLE CENTURION

05-10-2009